



INSTRUCTIONS

J06459

2017-01-16



SPORTSTER SPEEDOMETER RELOCATION KIT

GENERAL

Kit Number

70900660, 70900661, 55800672

Models

For model fitment information, see the P&A Retail Catalog or the Parts and Accessories section of www.harley-davidson.com (English only).

Installation Requirements

⚠ WARNING

Rider and passenger safety depend upon the correct installation of this kit. Use the appropriate service manual procedures. If the procedure is not within your capabilities or you do not have the correct tools, have a Harley-Davidson dealer perform the installation. Improper installation of this kit could result in death or serious injury. (00333b)

Separate purchase of additional parts or accessories is required for proper installation. Refer to the latest Harley-Davidson Genuine Motor Accessories and Genuine Motor Parts catalog.

These kits are designed to be used in conjunction with Clip-On Handlebar Kits (Part No. 55800646, 55800668, 55800647).

NOTE

This instruction sheet references service manual information. A service manual for your model motorcycle is required for this installation and is available from a Harley-Davidson Dealer.

Kit Contents

See Figure 1, Figure 2, Figure 3 and Table 1, Table 2, Table 3.

PREPARE

⚠ WARNING

To prevent accidental vehicle start-up, which could cause death or serious injury, remove main fuse before proceeding. (00251b)

1. Remove main fuse. See the service manual.
2. Remove the original equipment (OE) handlebar, if still installed. See the service manual.

INSTALLATION

2014-Later XL1200X:

1. See Figure 1. Place handlebar clamp plug (1) in lower handlebar clamps.
2. Install original speedometer bracket and screws. Tighten finger-tight.
3. Center and rotate plug for best appearance.
4. Beginning with rear screws, tighten to 16.3–24.4 N·m (10–20 ft-lbs).

2014-Later XL883N

1. Remove lower handlebar clamps from upper fork bracket. See the service manual.
2. Remove headlamp assembly. Retain hardware for assembly. See the service manual.
3. Remove speedometer from original speedometer housing. Retain gaskets and screws. See the service manual.
4. See Figure 2. Transfer original indicator lamp assembly and **new** bezel.
 - a. Remove adhesive backing from **new** bezel (3).
 - b. Adhere bezel to speedometer bracket (2) from the inside.
 - c. Secure indicator lamp assembly and bezel using original screws.
5. Install housing with screws (1).
 - a. Tighten to 16.3–24.4 N·m (10–20 ft-lbs).
 - b. Install headlamp assembly.
 - a. Install headlamp to speedometer housing using original hardware.
 - b. Adjust headlamp alignment. See the service manual.
 - c. Tighten. See the service manual.
 - c. Install speedometer into new housing (2) using original gaskets and screws. See the service manual.
 - d. Connect electrical harness.

2016.5-Later XL1200CX

1. Remove lower handlebar clamps from upper fork bracket. See the service manual.
2. Remove speedometer from original speedometer housing. Retain hardware, gaskets and backplate. See the service manual.



3. See Figure 3. Transfer original indicator lamp assembly and **new** bezel.
 - a. Remove adhesive backing from **new** bezel (3).
 - b. Adhere bezel to speedometer bracket (2) from the inside.
 - c. Secure indicator lamp assembly and bezel using original screws.
4. Install speedometer into new housing (2) using original hardware, gaskets and backplate. See the service manual.
5. Connect electrical harness.
6. Install housing and speedometer assembly with screws (1), spacers (4) and locknuts (5).
 - a. Place spacers (4) between upper fork bracket and speedometer bracket.
 - b. Tighten to 40.7–54.2 N·m (30–40 ft-lbs).

2014-Later XL1200C

1. See Figure 4 and Table 4. This application requires separate purchase of additional parts listed.
2. Remove lower handlebar clamps from upper fork bracket. See the service manual.
3. Connect **new** indicator lamp and harness assembly (4).
 - a. Remove fuel tank. See service manual.
 - b. Disconnect original speedometer harness, Discard harness.
 - c. Connect **new** indicator lamp and harness assembly to main harness.
 - d. Install fuel tank. See service manual.
4. Install indicator lamp assembly (3) and bezel (C) into new speedometer bracket using **new** screws (4).
 - a. Remove adhesive backing from **new** bezel (C).
 - b. Adhere bezel to speedometer bracket (A) from the inside.
 - c. Secure **new** indicator lamp assembly (3) and bezel using **new** screws (4).
5. Remove speedometer from original speedometer housing. Retain screws and gaskets. See the service manual.
6. Install speedometer into housing using original gaskets, original screws (B) and **new** back cover (2). Tighten to 1.4–1.9 N·m (12–17 in-lbs).
7. Using screws (1), install housing and speedometer assembly beginning at step 5 of the XL1200CX procedure.

COMPLETE

1. Install main fuse. See the service manual.

SAFETY CHECK

⚠ WARNING

Be sure that steering is smooth and free without interference. Interference with steering could result in loss of vehicle control and death or serious injury. (00371a)

- Make sure throttle/idle control cables do not pull tight when handlebars are turned fully to left or right fork stops.
1. Verify that wires, clutch cables, throttle/idle cables and brake lines do not pull tight when handlebars are turned fully to left or right fork stops.
 2. Verify that there is adequate clearance between the handlebar and the fuel tank when the handlebars are turned to the left and right stops.
 3. Verify that the ignition switch is turned to OFF.
 4. Install the main fuse. See the service manual.

⚠ WARNING

Be sure that all lights and switches operate properly before operating motorcycle. Low visibility of rider can result in death or serious injury. (00316a)

5. Turn the ignition switch to IGNITION, but do not start the engine. Test all switches and lights for proper operation.

⚠ WARNING

Before starting engine, be sure throttle control will snap back to idle position when released. A throttle control that prevents engine from automatically returning to idle can lead to loss of control, which could result in death or serious injury. (00390a)

SERVICE PARTS

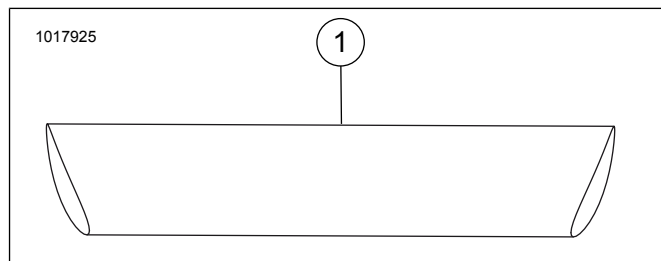


Figure 1. Service Parts: 2014-Later XL1200X

Table 1. Service Parts Table

Item	Description (Quantity)	Part Number
1	Handlebar plug	55800672

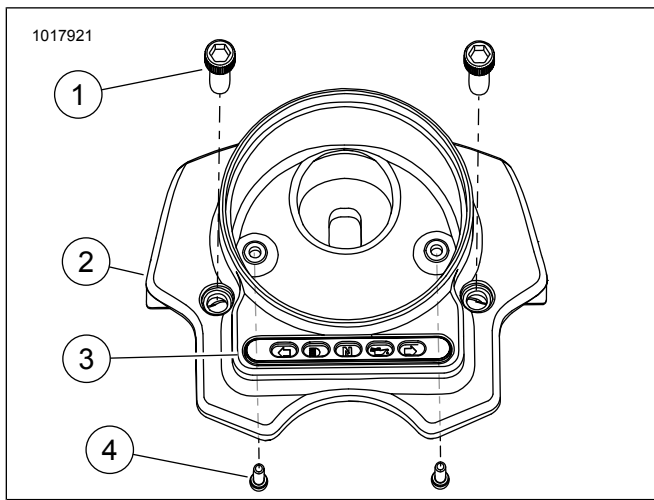


Figure 2. Service Parts: 2014-Later XL883N

Table 2. Service Parts Table

Item	Description (Quantity)	Part Number
1	Socket head cap screw (2)	94334-91T
2	Speedometer bracket	Not sold separately
3	Indicator lamp bezel	68513-07B
4	Screw (2)	3058

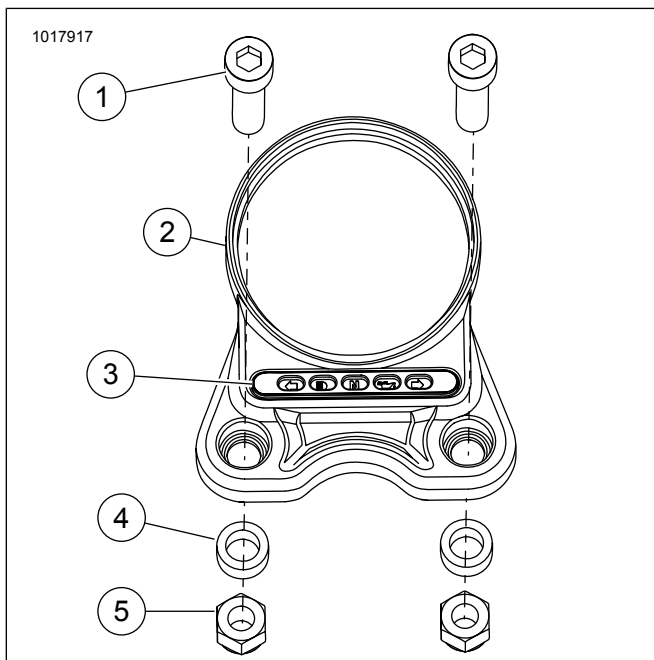


Figure 3. Service Parts: 2016.5-Later XL1200CX

Table 3. Service Parts Table

Item	Description (Quantity)	Part Number
1	Socket head cap screw (2)	10200477
2	Speedometer bracket	Not sold separately
3	Indicator lamp bezel	68513-07B
4	Spacer (2)	12400125
5	Locknut (2)	7768W

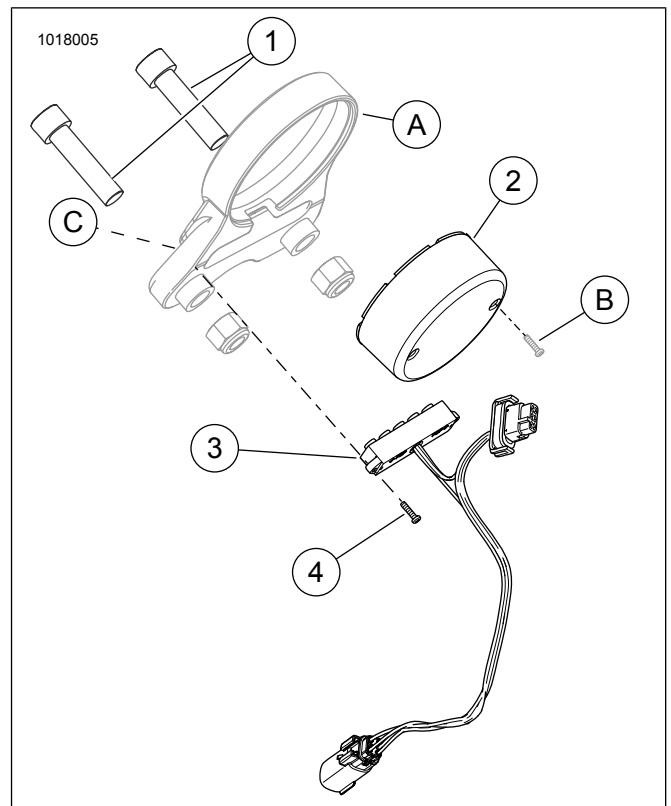


Figure 4. Additional Parts Required: 2014-Later XL1200C

Table 4. Additional Parts Table

Item	Description (Quantity)	Part Number
1	Socket head cap screw (2)	3374
2	Speedometer back cover	69200439
3	Indicator lamp and harness assembly	69200080
4	Screw, indicator lamp (2)	2325
A	Speedometer bracket with indicator lamp bezel	Supplied in kit 70900660
B	Original screws (2)	-
C	Indicator lamp bezel (not shown)	68513-07B (supplied in 70900660)