



# INSTRUCTIONS

J06353

2017-01-16



## SCREAMIN' EAGLE HIGH-FLOW EXHAUST SYSTEM - TOURING

### GENERAL

#### Kit Numbers

64800059, 64800062

#### Models

For model fitment information, see the P&A retail catalog or the Parts and Accessories section of [www.harley-davidson.com](http://www.harley-davidson.com) (English only).

#### Installation Requirements

Proper installation of the kit requires Anti-Seize Lubricant (Part No. 98960-97).

All models require ECM calibration with Screamin' Eagle Pro Street Tuner for proper installation.

This kit requires the separate purchase of two heated oxygen sensors (HO2S) gasket (Part No. 11936) and two exhaust port gaskets (Part No. 65324-83B) which are available from a Harley-Davidson dealer.

#### ▲ WARNING

**Rider and passenger safety depend upon the correct installation of this kit. Use the appropriate service manual procedures. If the procedure is not within your capabilities or you do not have the correct tools, have a Harley-Davidson dealer perform the installation. Improper installation of this kit could result in death or serious injury. (00333b)**

#### NOTE

*This instruction sheet references service manual information. A service manual for this year/model motorcycle is required for this installation. One is available from a Harley-Davidson dealer.*

#### Kit Contents

See Figure 1 and refer to Table 1.

### PRODUCT INFORMATION

#### Tampering Prohibition

Federal law prohibits any modifications to this exhaust system which cause the motorcycle to exceed Federal noise standards. Use of a motorcycle with such a modified exhaust system is also prohibited.

#### Noise Emission Warranty

Harley-Davidson warrants that these mufflers, at the time of sale, meet all applicable United States E.P.A. Federal Noise and Emissions standards. This warranty extends to the original purchaser for purposes other than resale, and to all subsequent

buyers. Direct warranty claims to an authorized Harley-Davidson dealer.

#### NOTE

*To avoid penalties under state and local ordinances, repair or replace this product if motorcycle noise increases significantly through use.*

### INSTALLATION

#### ▲ WARNING

**To prevent accidental vehicle start-up, which could cause death or serious injury, remove main fuse before proceeding. (00251b)**

1. Remove main fuse. See the owners manual.
2. Remove saddlebags. See the owners manual.
3. Remove the original equipment (OE) exhaust system. Retain exhaust flanges and mounting hardware for later installation. See the service manual.
4. Remove heated oxygen sensors (HO2S) and retain for installation.
5. Remove the used HO2S gasket from sensor and install a **new** gasket to the HO2S (gasket sold separately).
6. See Figure 1. Install HO2S adapter with supplied gaskets (11) in **new** head pipe.  
Torque: 40.7–59.7 N·m (30–44 ft-lbs)
7. Install HO2S in **new** head pipe adapters (17).  
Torque: 16–19 N·m (12–14 ft-lbs)
8. 

#### NOTE

  
*Do not tighten hardware until directed to do so.*  
  
Loosely assemble the collector shield (6) to the **new** head pipe (1) using the supplied clamps. **Do not tighten clamps.**
9. Loosely install **new** head pipe (1).
10. Install the cross over pipe gasket (11) onto the head pipe then loosely install the cross over pipe (16) and clamp (8).
11. Loosely install the cross under pipe hanger (10) and bolt.
12. Install the supplied clamps (9) into the mufflers and slide the mufflers (2 and 3) into the pipes.



13. Install the rear muffler support and screws. See the service manual.  
Torque: 19–24.4 N·m (14–18 ft-lbs)
14. Tighten exhaust manifold nuts. See the service manual.  
Torque: 11.3–13.6 N·m (8–10 ft-lbs)
15. Tighten the transmission exhaust bracket nut. See the service manual.  
Torque: 20.3–27.1 N·m (15–20 ft-lbs)
16. Tighten the cross over pipe bracket bolt. See the service manual.  
Torque: 19–24.4 N·m (14–18 ft-lbs)
17. Tighten the cross over pipe clamp (8).  
Torque: 51.5–58.3 N·m (38–43 ft-lbs)
18. Install front (4) and rear (5) header pipe shields.  
Torque: 2.2–4.5 N·m (19–40 in-lbs)
19. Position and align collector shield (6) with front and rear header pipe shields.  
Torque: 2.2–4.5 N·m (19–40 in-lbs)

20. Install the cross over pipe shield (7).  
Torque: 2.2–4.5 N·m (19–40 in-lbs)
21. Tighten the muffler clamps (9).  
Torque: 51.5–58.3 N·m (38–43 ft-lbs)

## COMPLETION

### NOTICE

**Wipe all fingerprints off of exhaust system components after installation and before starting engine. Oil from hands can leave permanent marks on exhaust system finish. (00346a)**

1. Wipe mufflers clean of all fingerprints. Oil from hands can permanently discolor the chrome finish.

### NOTE

Verify that the ignition is **OFF** before installing the main fuse.

2. Install main fuse.
3. Start motorcycle. Check for exhaust leaks.
4. Install saddlebags.

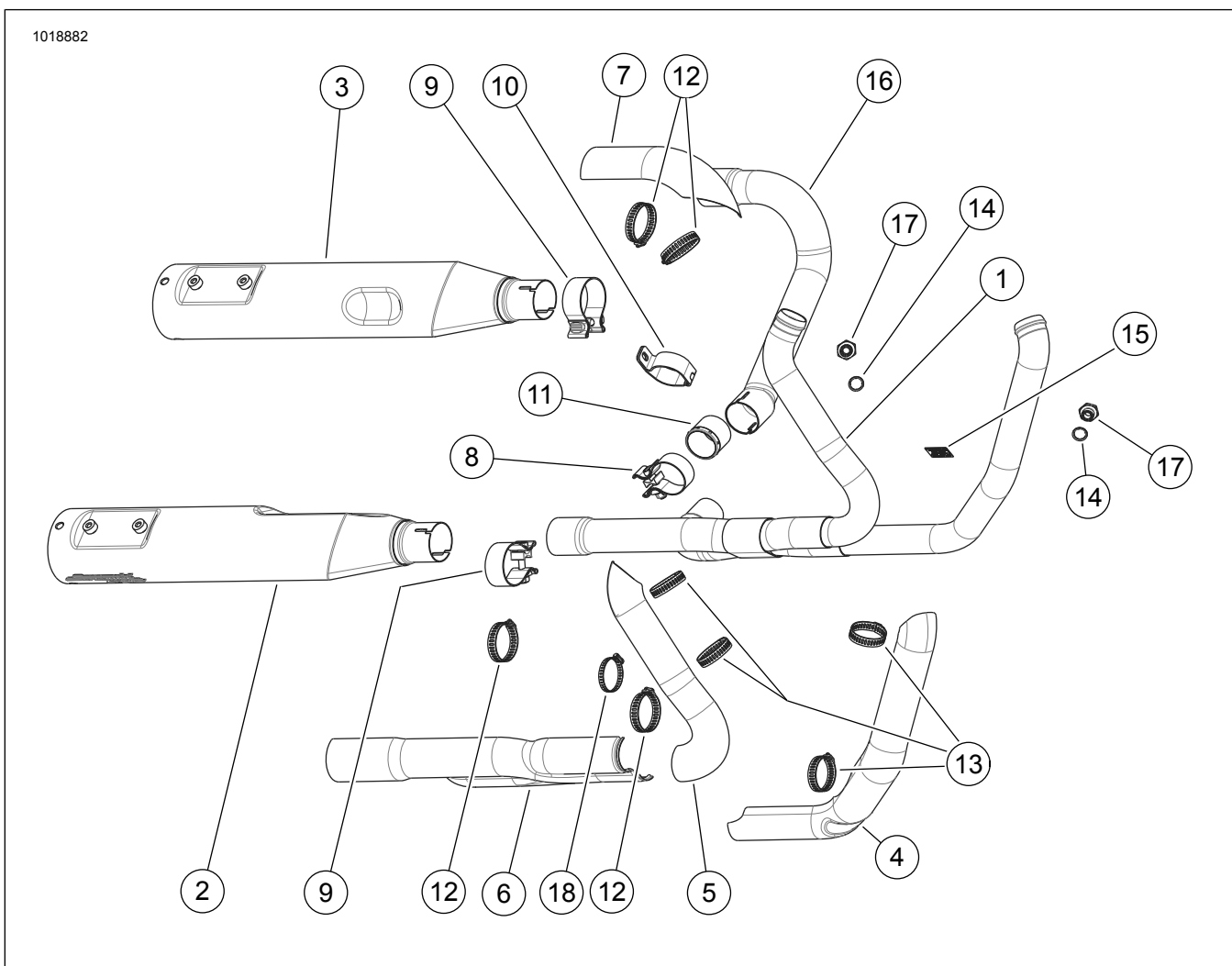


Figure 1. Service Parts: Screamin' Eagle High-Flow Exhaust System

**Table 1. Service Parts: Screamin' Eagle High-Flow Exhaust System**

Item	Description	QTY	Part Number	Item	Description	QTY	Part Number
1	Header assy., performance	1	Not sold separately	8	Clamp, muffler	1	65900007
2	Muffler, RH - 4.5 OD	1	64900557 - Chrome	9	Clamp, muffler	2	65900010
			64900616 - Black	10	Clamp, hinged	1	65900039
3	Muffler, LH - 4.5 OD	1	64900558 - Chrome	11	Gasket, muffler - headed	1	65900040
			64900619 - Black	12	Clamp, worm - #28	4	9954
4	Shield, front	1	65400358 - Chrome	13	Clamp, worm - #24	4	9955
			65400359 - Black	14	Washer	2	12300039
5	Shield, rear	1	65400360 - Chrome	15	Label, EPA	1	Not sold separately
			65400361 - Black	16	Pipe, cross over	1	Not sold separately
6	Shield, collector	1	65400362 - Chrome	17	Adaptor, HO2S	2	65700021
			65400363 - Black	18	Clamp, worm - #28	1	65900042
7	Shield, LH	1	65400367 - Chrome				
			65400366 - Black				