



INSTRUCTIONS

J05993

2017-08-23



LED AUXILIARY LAMPS

GENERAL

Kit Number

68000172, 68000173, 68000252, 68000253

Models

These fog lamps fit all Harley-Davidson original equipment and Genuine Motor Accessory auxiliary lamps. They are direct replacements for the original bulbs found in the lamps.

For model fitment information, see the P&A Retail Catalog or the Parts and Accessories section of www.harley-davidson.com (English only).

Installation Requirements

2004 and earlier Touring models: require the separate purchase of two Y-harnesses (68355-05).

⚠ WARNING

Rider and passenger safety depend upon the correct installation of this kit. Use the appropriate service manual procedures. If the procedure is not within your capabilities or you do not have the correct tools, have a Harley-Davidson dealer perform the installation. Improper installation of this kit could result in death or serious injury. (00333b)

NOTE

This instruction sheet references service manual information. A service manual for your model motorcycle is required for this installation. One is available from a Harley-Davidson dealer.

This fog lamp kit requires up to 4.6 A current from the electrical system. This may be less than the OE (original equipment) electrical draw.

Kit Contents

See Figure 3 and Table 1.

INSTALLATION

For ALL vehicles with main fuse:

⚠ WARNING

To prevent accidental vehicle start-up, which could cause death or serious injury, remove main fuse before proceeding. (00251b)

NOTE

For vehicles equipped with security siren:

- Verify that the hands-free Fob is present.
- With security fob present, turn ignition switch ON.

1. Refer to the service manual and follow the instructions to remove the main fuse.

For ALL vehicles with main circuit breaker:

⚠ WARNING

To prevent accidental vehicle start-up, which could cause death or serious injury, disconnect negative (-) battery cable before proceeding. (00048a)

1. Refer to the service manual and follow the instructions to remove the seat. Disconnect the negative (black) battery cable from the negative (-) battery terminal. Retain all seat mounting hardware.
2. See Figure 3. Remove auxiliary lamp retaining screw (A) and nut (B) from auxiliary lamp retaining ring (C). Remove and retain retaining ring and hardware.
3. Disconnect the wire harness plug from back of auxiliary lamp (1).
4. Remove lamp (1) and nesting ring (D). Discard lamp but retain nesting ring.
5. Place the nesting ring at back of new lamp with concave side facing away from lamp.
6. **For 2004 and earlier Touring models:** Connect a Y-harness (68355-05) to the auxiliary lamp connectors.

NOTE

If the ground wires will not mate when the connectors are connected, see the service manual. Switch the wire terminal positions in the fog lamp connector.

7. Verify that when connected, the fog lamp ground wire (black) will mate to the auxiliary light connector ground wire (black).
8. Connect fog lamp connector to the motorcycle auxiliary light connector (E). Install lamp and nesting ring in housing. Make sure to align index tab on lamp with pockets in the nesting ring. Make sure that the nesting ring index tab (F) locates in the slot of at the bottom of the housing.
9. Install retaining ring over lamp. Rotate retaining ring so the screw is centered at bottom. Install nut and screw and tighten until snug.
10. Repeat for the lamp on the opposite side.
11. See the service manual and connect the battery negative cable (-) or install main fuse.



▲ WARNING

After installing seat, pull upward on seat to be sure it is locked in position. While riding, a loose seat can shift causing loss of control, which could result in death or serious injury. (00070b)

12. If necessary, install the seat.
13. Test the LED fog lamps for proper operation.
14. Align the LED fog lamps.

ALIGNMENT PROCEDURE

1. Check tire pressures are correct. See the owner's manual.
2. Adjust rear shocks for the rider and intended load.
3. Fill fuel tank or add an equal amount of ballast.

NOTE

Choose a wall in minimum light.

4. See Figure 1. Park the motorcycle on a line (1) perpendicular to the wall.
5. Position motorcycle with the front axle 25 ft (7.6 m) from wall.
6. Draw a vertical centerline (2) on the wall.

NOTE

The weight of the rider will compress the suspension slightly. Have a person weighing roughly the same as that of the principal rider sit on the motorcycle.

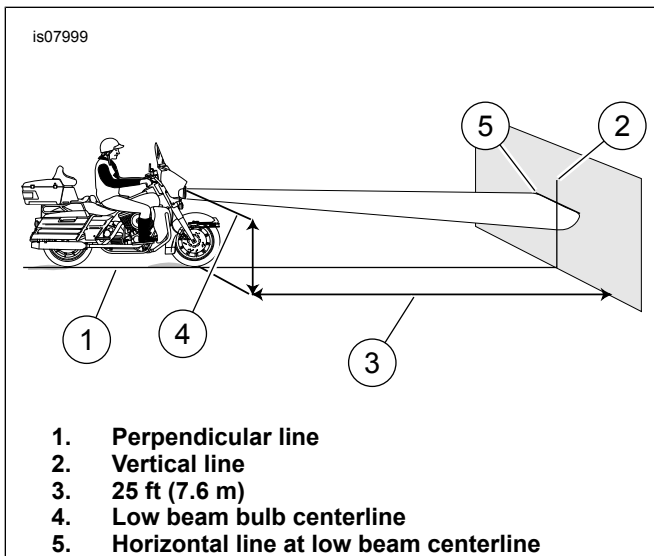


Figure 1. Headlamp Alignment: LED Type

7. With the vehicle upright and a rider seated on the motorcycle, measure the distance from the floor to the centerline of each LED fog lamp. Record this measurement.

8. Measure the horizontal distance from the headlamp vertical centerline to the vertical centerline of each LED fog lamp. Record this measurement.
9. See Figure 2. Mark the LED fog lamp horizontal and vertical centerlines (2 and 3) on the wall.

NOTE

Follow the adjustment procedure in the service manual procedure for loosening and tightening the auxiliary lamp flare nut. Follow this procedure for positioning the beam area of the LED fog lights.

10. See the service manual and loosen the auxiliary lamp housing adjusting hardware.
11. Cover the headlamp and right side fog lamp. Adjust the left side fog lamp position:
 - The beam area (4) is horizontally centered on the left side fog lamp center lines (2).
 - The top of the beam area is 10 cm (4 in) below the left side fog lamp center point.
12. Cover the headlamp and left side fog lamp. Adjust the right side fog lamp position:
 - The beam area (5) is horizontally centered on the right side fog lamp center lines (3).
 - The top of the beam area is 10 cm (4 in) below the right side fog lamp center point.
13. See the service manual and tighten the auxiliary lamp housing adjusting hardware and, if necessary, front turn signal hardware to torque specified.

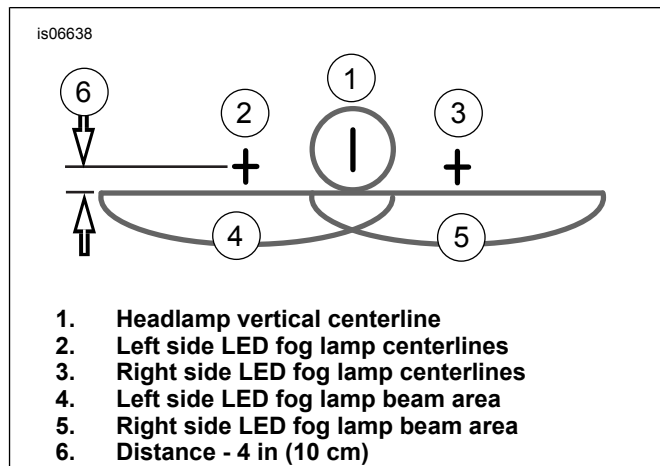


Figure 2. Properly Aim LED Fog Lamps

SERVICE PARTS

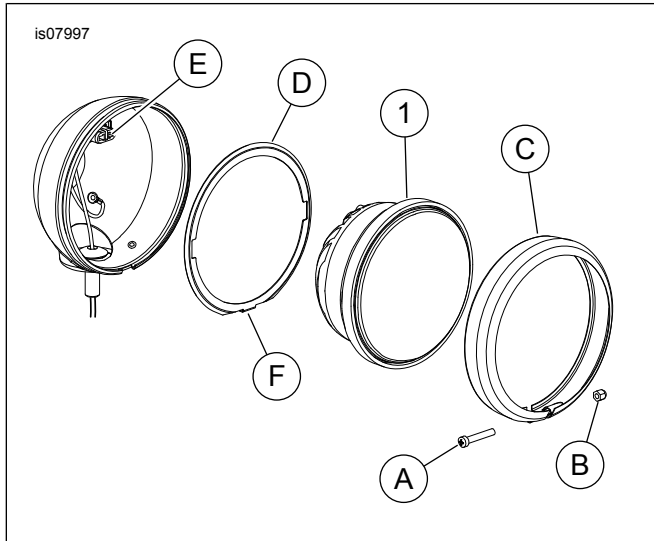


Figure 3. Service Parts: LED Auxiliary Lamps

Table 1. Service Parts

Item	Description (Quantity)	Part Number
1	LED lamp (chrome) (2)	68000020
1	LED lamp (black) (2)	68000174
1	LED lamp (chrome) (2)	68000203
1	LED lamp (black) (2)	68000239
Items mentioned in text, but not included in kit.		
A	Screw, retaining ring	
B	Nut, retaining ring	
C	Retaining ring	
D	Nesting ring	
E	Connector	
F	Nesting ring index tab	