



INSTRUCTIONS

J06440

2017-08-22



CHROME FORWARD CONTROL BRACKET KIT

GENERAL

Kit Number

50500695, 50500696

Models

For model fitment information, please see the P&A Retail Catalog or the Parts and Accessories section of www.harley-davidson.com (English only).

⚠ WARNING

Rider and passenger safety depend upon the correct installation of this kit. Use the appropriate service manual procedures. If the procedure is not within your capabilities or you do not have the correct tools, have a Harley-Davidson dealer perform the installation. Improper installation of this kit could result in death or serious injury. (00333b)

NOTE

This instruction sheet references service manual information. A service manual for your model motorcycle is required for this installation and is available from a Harley-Davidson dealer.

KIT CONTENTS

See Figure 3 and Table 1.

REMOVAL

Remove right side forward control bracket and left side forward control bracket. See service manual.

INSTALLATION

RIGHT SIDE

1. See Figure 1. Position right side forward control bracket (3).

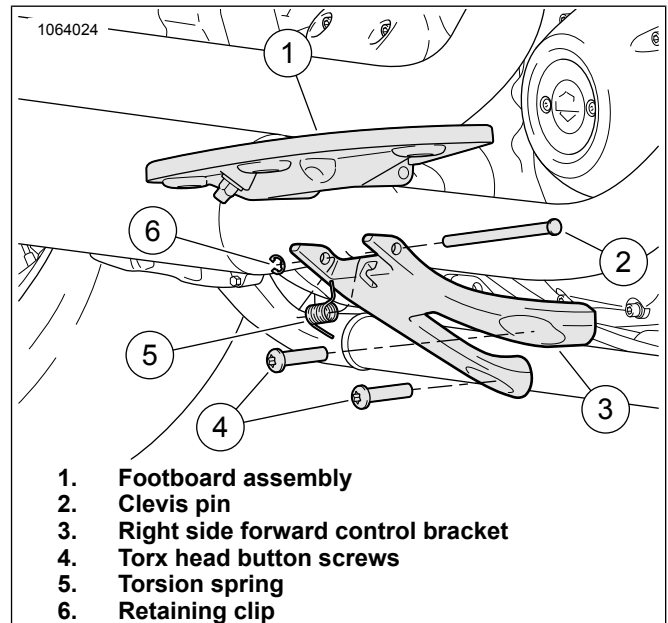


Figure 1. Right Side Forward Control

2. Install two 3/8-16 x 1.625 torx head button screws (4). Tighten.
Torque: 54.2–61 N·m (40–45 ft-lbs)
3. Insert short leg of torsion spring (5) into hole in footboard (1). Align long leg of torsion spring (5) to hole in footboard mount and insert. Rotate footboard (1) into position in clevis and insert clevis pin (2) through clevis, footboard (1) and spring (5). Install retaining clip (6).

LEFT SIDE

1. See Figure 2. Position left side forward control bracket (3).

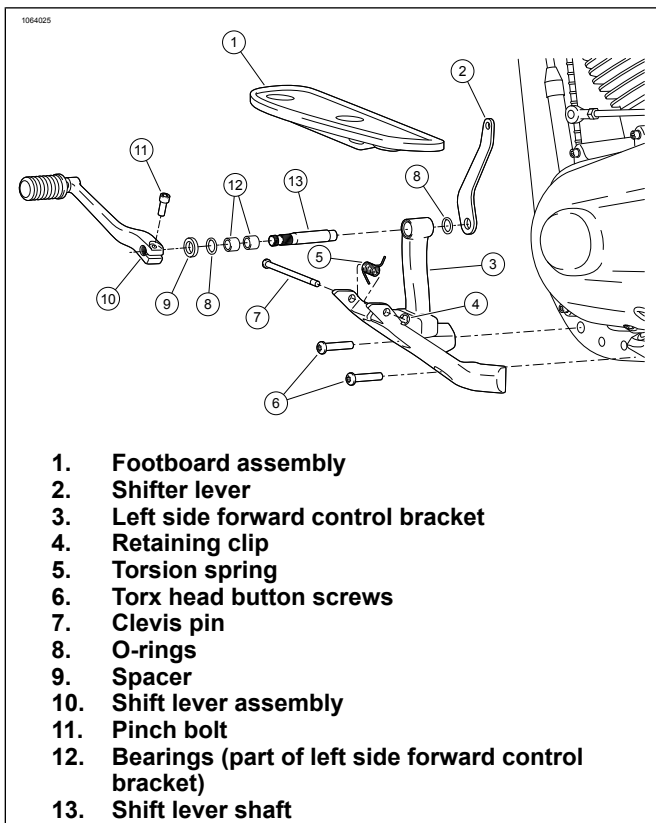


Figure 2. LEFT SIDE FORWARD CONTROL

2. Install two 3/8-16 x 1.625 torx head button screws (6). Tighten.
Torque: 54.2–61 N·m (40–45 ft-lbs)

3. Verify inner O-ring (8) is in place on shift lever shaft (13) and position shifter lever in left side forward control bracket (3).
4. Install outer O-ring (8) and spacer (9) on shift lever shaft (13).
5. Install shifter assembly (10) and install pinch bolt (11). Tighten.
Torque: 12.2–16.2 N·m (9–12 ft-lbs)
6. Insert short leg of torsion spring (5) into hole in footboard (1). Align long leg of torsion spring (5) to hole in footboard mount and insert. Rotate footboard (1) into position in clevis and insert clevis pin (7) through clevis, footboard (1) and spring (5). Install retaining clip (4).

SERVICE PARTS

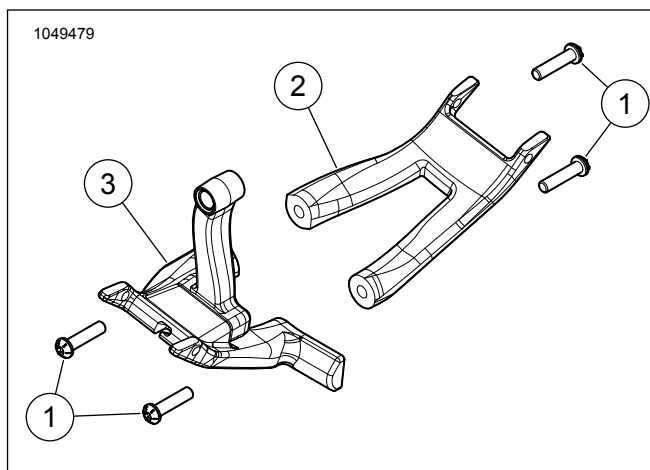


Figure 3. Service Parts: Chrome Forward Control Bracket Kit

Table 1. Service Parts: Chrome Forward Control Bracket Kit

Item	Description (Quantity)	Part Number
1	3/8-16 x 1.625 Chrome torx head button screws (4)	10200536
2	Chrome right side forward control bracket	50500915, 50500918
3	Chrome left side forward control bracket	50500919, 50500920