



INSTRUCTIONS

J06405

2017-08-22



HAND LEVER KITS

GENERAL

Kit Numbers

36700209, 36700210, 36700211

Models

For model fitment information, see the P&A Retail Catalog or the Parts and Accessories section of www.harley-davidson.com (English only).

⚠ WARNING

Rider and passenger safety depend upon the correct installation of this kit. Use the appropriate service manual procedures. If the procedure is not within your capabilities or you do not have the correct tools, have a Harley-Davidson dealer perform the installation. Improper installation of this kit could result in death or serious injury. (00333b)

NOTE

This instruction sheet references service manual information. A service manual for your model motorcycle is required for this installation and is available from a Harley-Davidson dealer.

Kit Contents

See Figure 1 and Table 1.

INSTALLATION

Brake lever

⚠ WARNING

Wear safety glasses or goggles when removing or installing retaining rings. Retaining rings can slip from the pliers and could be propelled with enough force to cause serious eye injury. (00312a)

1. See the Figure 1 and the service manual. Remove the retaining ring (3) from the groove in the pivot pin (5) and discard retaining ring.
2. Remove and discard the pivot pin (5), original equipment brake lever (1) and pivot lever bushing (B).

NOTE

New brake levers come with the pivot lever bushing installed.

Follow the instructions in Steps 2 and 3 carefully in order to prevent the actuating tab on the brake lever from

damaging the rubber boot and plunger of the front stoplight switch.

3. Gently press and hold the piston cap (A) forward with a screwdriver. Slip the brake lever into position and align the pivot pin holes.
4. Install the **new** pivot pin (5) and new retaining ring (3) from kit.
5. Check the front brake for proper operation. There should be no free play in the hand lever. A slight preload is permissible.

⚠ WARNING

A plugged or covered relief port can cause brake drag or lock-up, which could lead to loss of control, resulting in death or serious injury. (00288a)

6. To verify proper operation of the master-cylinder relief port, actuate the brake lever with the reservoir cover and gasket removed. A slight spurt of fluid will break the surface if internal components are working properly.
7. Install the master cylinder cover.

⚠ WARNING

Be sure that all lights and switches operate properly before operating motorcycle. Low visibility of rider can result in death or serious injury. (00316a)

8. Check that the stop light goes on when the brake lever is actuated.

⚠ WARNING

After repairing the brake system, test brakes at low speed. If brakes are not operating properly, testing at high speeds can cause loss of control, which could result in death or serious injury. (00289a)

Clutch lever

See the service manual for all clutch lever removal, installation and adjustment procedures.

SERVICE PARTS



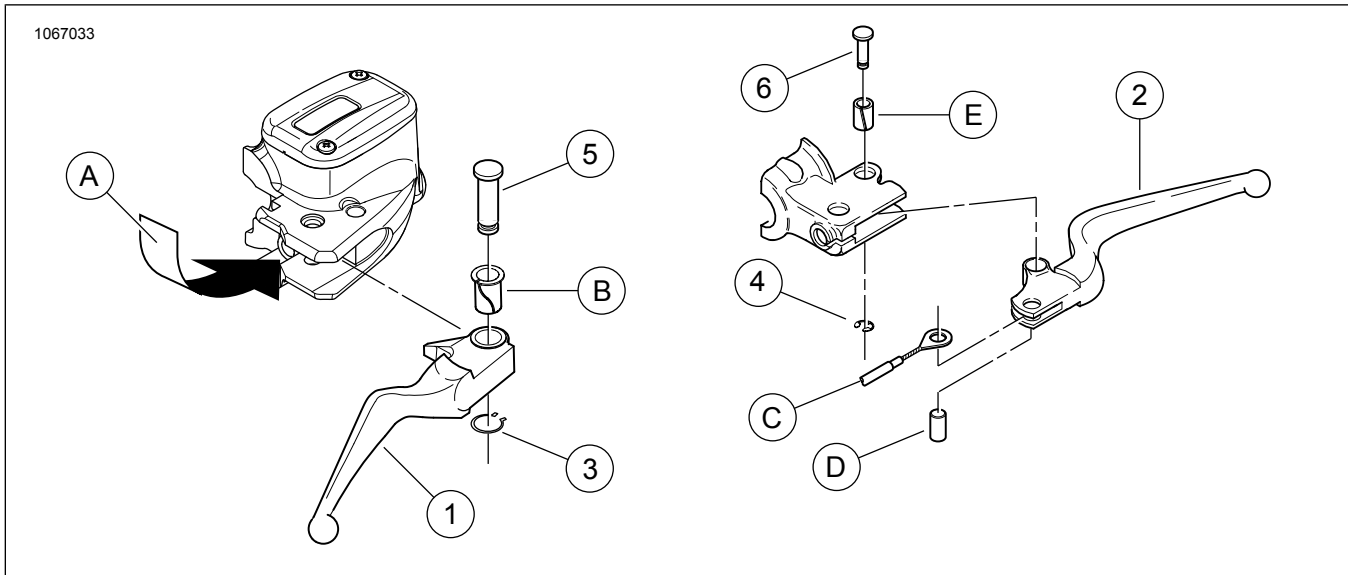


Figure 1. Service Parts: Hand Lever Kits

Table 1. Service Parts Table

Kit	Item	Description (Quantity)	Part Number
Kit 36700209	1	Brake lever	Not Sold Separately
	2	Clutch lever	Not Sold Separately
	3	Brake retaining ring	11379
	4	Clutch retaining ring	11143
	5	Brake pin	42807-04
	6	Clutch pin	41700458
Kit 36700210, Kit 36700211	1	Brake lever	Not Sold Separately
	2	Clutch lever	Not Sold Separately
	3	Brake retaining ring	11379
	4	Clutch retaining ring	11143
	5	Brake pin	41600193
	6	Clutch pin	36700222
Items mentioned in text, but not included in kit:			
	A	Press piston cap forward	
	B	Brake bushing	
	C	Clutch control cable (reference only)	
	D	Clutch cable anchor pin (reference only)	
	E	Clutch lever pivot pin bushing	