



INSTRUCTIONS

J06487

2017-08-22



REAR AXLE-NUT COVER KIT

GENERAL

Kit Number

43000057

Models

For model fitment information, please see the P&A Retail Catalog or the Parts and Accessories section of www.harley-davidson.com (English only).

Additional Parts Required

⚠ WARNING

Rider and passenger safety depend upon the correct installation of this kit. If the procedure is not within your capabilities or you do not have the correct tools, have a Harley-Davidson dealer perform the installation. Improper installation of this kit could result in death or serious injury. (00308b)

Kit Contents

See Figure 1 and Table 1.

INSTALLATION

NOTE

The shallower axle cover (3) mounts to the right side of the motorcycle.

1. Adjust the position of the exhaust system (if necessary) to provide axle-nut clearance.
2. Start the set screws (2,4) into the covers (1,3).

NOTE

The short set screw (2) goes in the larger axle nut cover (1). The long set screw (4) goes in the shallower axle side cover. See Figure 1

3. Position each axle-nut cover over the appropriate axle nut.
4. Tighten the cover set screws.
Torque: 7.9 N·m (70 in-lbs) cover set screws

NOTE

The set screws in this kit are treated with a thread-locking compound. When replacing or re-installing the set screws (2,4), apply LOCTITE 243 MEDIUM STRENGTH THREADLOCKER AND SEALANT (BLUE) (99642-97) to the set screw threads.

SERVICE PARTS

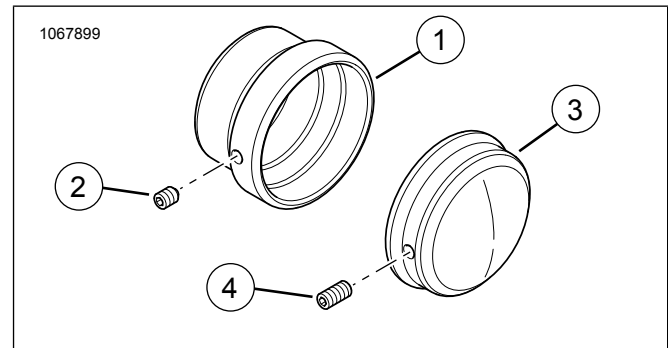


Figure 1. Service Parts: Brass Rear Axle Cover Kit

Table 1. Service Parts: Brass Rear Axle-Nut Cover Kit

Item	Description (Quantity)	Part Number
1	Axle-nut cover, left side	Not Sold Separately
2	Set screw, 10-24 x 1/4 inch	3365
3	Axle cover, right side	Not Sold Separately
4	Set screw, 10-24 x 3/8 inch	3194

CARE AND CLEANING GUIDELINES FOR BRASS PARTS

Cleaning Instructions

1. Verify part is dry and free of dirt or debris.
2. Place a small amount of Harley-Davidson® Chrome Clean & Shine on a microfiber cloth or detailing swab.
3. Using light pressure, rub the brass parts with the microfiber cloth. For hard to reach places or grooves, use the detailing swab.

Obtaining a Bright Finish

Brass parts will naturally age and darken with time. If a bright brass finish is preferred, place some Harley-Davidson Bare Metal Polish on a microfiber cloth and lightly rub on the brass parts until they reach the desired brightness.

Slowing the Natural Aging Process

To slow the aging process of the brass parts, place a small amount of Harley-Davidson Glaze Poly Sealant on a microfiber cloth or detailing swab, and lightly rub on the parts until the sealant has soaked in.

Precautions

- Use of non-recommended cleaning, polishing and protective products will result in the removal of the aged finish from the brass parts.
- Prolonged contact with certain items (hands, gloves, boots, dust, etc.) and exposure to the elements will also alter all surface finishes and is NOT considered a defect.

- Avoid cleaning parts with abrasive and aggressive chemicals and abrasive cleaning pads.
- Avoid ammoniated products and bleach.
- Prolonged exposure to water will alter the brass finish. Wipe down parts after contact with water.
- Excess rubbing may lighten the surface appearance of the part.