



INSTRUCTIONS

J05883

2017-08-22



FRONT MACHETE WHEEL KITS

GENERAL

⚠ WARNING

The rider's safety depends upon the correct installation of this kit. Dealer installation is required for vehicles equipped with ABS brakes. Proper installation of this kit requires the use of special tools available only through a Harley-Davidson Dealer. An improperly serviced brake system can adversely affect brake performance, which could result in death or serious injury. (00578b)

⚠ WARNING

Install only wheels and installation kits approved for your model motorcycle. Contact a Harley-Davidson dealer to verify fitment. Mismatching wheels and installation kits or installing wheels not approved for your model can cause loss of control, which could result in death or serious injury. (00610c)

Kit Numbers

43300367, 43300368, 43300369, 43300370, 43300371, 43300372

Models

For model fitment information, see the P&A Retail Catalog or the Parts and Accessories section of www.harley-davidson.com (English only).

NOTE

Accessory hub caps are not compatible with this wheel.

Kit Contents

This kit includes a custom wheel, and depending on the kit, may also include a hub cap. See Figure 2. and Table 3 for kit contents.

Additional Parts Required

Proper installation of this kit requires the separate purchase of the following parts which are available at a Harley-Davidson dealer:

- Tires (Refer to Table 2.)
- Wheel Installation Kit (Refer to Table 4. through Table 8 to determine required installation kit.)

- Brake Disc Screws (See Figure 1. and Refer to Table 1.)
- Wheel Bearing Remover and Installer (94134-09A)

Recommended Products

The following Harley-Davidson Genuine Motor Accessories are recommended for proper maintenance and cleaning:

- Chrome Clean & Shine (93600031 (US) / 93600082 (International))
- Glaze Poly Sealant (93600026 (US) / 93600079 (International))
- Harley® Wheel and Spoke Brush (43078-99)
- Wheel & Tire Cleaner (93600024 (US) / 93600076 (International))

⚠ WARNING

Rider and passenger safety depend upon the correct installation of this kit. Use the appropriate service manual procedures. If the procedure is not within your capabilities or you do not have the correct tools, have a Harley-Davidson dealer perform the installation. Improper installation of this kit could result in death or serious injury. (00333b)

NOTE

This instruction sheet references service manual information. A service manual for your model motorcycle is required for this installation and is available from a Harley-Davidson dealer.

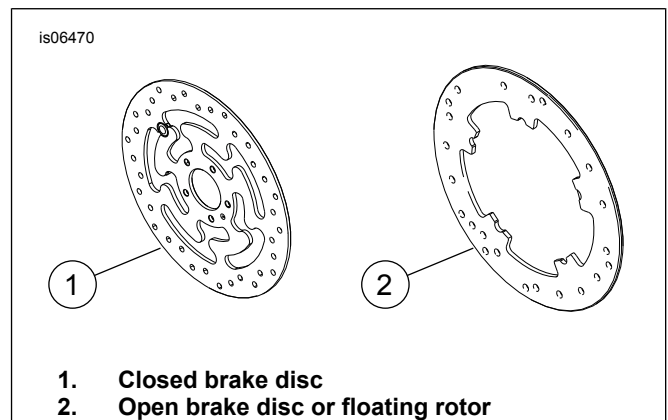


Figure 1. Front Brake Disc Styles

Table 1. Front Disc Hardware Fitment

Brake Disc	Hardware
Closed disc	5 Stock disc screws (3655A)
	Chrome screw kit (46646-05) includes 5 screws
Open disc	5 Stock disc screws (3762M) and 5 disc washers (6966M)

NOTE: Models equipped with dual front brakes and models being equipped with a wheel with dual brake mounting surfaces require twice as many screws/washers (10 total screws or 2 chrome screw kits if available).



INSTALLATION

1. Remove existing front wheel assembly. Save axle, axle nut, brake disc and wheel spacers for kit installation. Refer to FRONT WHEEL in service manual. **For FLSTC and FLSTN Models:** Discard moon-style hub cap.

NOTE

- Install short valve stem (43157-83A) included in the installation kit.

2. See Figure 2. Install valve stem assembly (L) on wheel. Refer to TIRES in service manual.

NOTE

Install the primary bearing first using appropriate service manual and WHEEL BEARING REMOVER/INSTALLER.

- The left side of the wheel has hub markings to identify it as the primary bearing side.
- The wheel should be installed so that the hub markings are on the left side of the motorcycle.
- The brake disc is installed on the left side of the wheel.

For Kits 43300367 and 43300368: When installing wheel on 2008 and later XL models, install bearing shim from installation kit under the primary bearing.

For Kits 43300369, 43300370, 43300371, and 43300372: The bearing shim provided in the installation kits are not required and can be discarded.

NOTICE

Do not re-use brake disc/rotor screws. Re-using these screws can result in torque loss and damage to brake components. (00319c)

3. Assemble the wheel installation kit components and brake disc(s) to wheel, using the appropriate service parts table. Refer to FRONT WHEEL in Service Manual.
4. **For FLSTC and FLSTN Models:** Install wheel kit and right side wheel spacer provided in installation kit. Refer to FRONT WHEEL in Service Manual. **For all other models:** Install previously removed wheel spacers. Refer to FRONT WHEEL in service manual.
5. Install front wheel (1), stock axle and stock axle nut. Refer to FRONT WHEEL in service manual.

MAINTENANCE AND CLEANING

Chrome parts must be maintained regularly so that they keep their original shine and luster.

1. Clean heavily-soiled wheel surfaces using Wheel & Tire Cleaner, applied with Harley Wheel and Spoke Brush.
2. Thoroughly clean chrome with a good quality chrome cleaner, such as Harley Chrome Clean & Shine.
3. After cleaning and polishing, seal the finish with a good quality sealer, such as Glaze Poly Sealant.

⚠ WARNING

Harley-Davidson recommends the use of its specified tires. Harley-Davidson vehicles are not designed for operation with non-specified tires, including snow, moped and other special-use tires. Use of non-specified tires can adversely affect stability, handling or braking and lead to loss of vehicle control, which could result in death or serious injury. (00024d)

Table 2. Specified Tire Combinations

Kit Installation	Specified Tire	Front Tire Part No.	REAR TIRE PART NO.
Installed on a 2014-Later 883N	Dunlop D402 MWW	43100004	43200007
	Michelin Scorcher "31" BW	41036-12	40878-11
	Dunlop GT502 FBW	43117-09	40556-06A

SERVICE PARTS

1271768

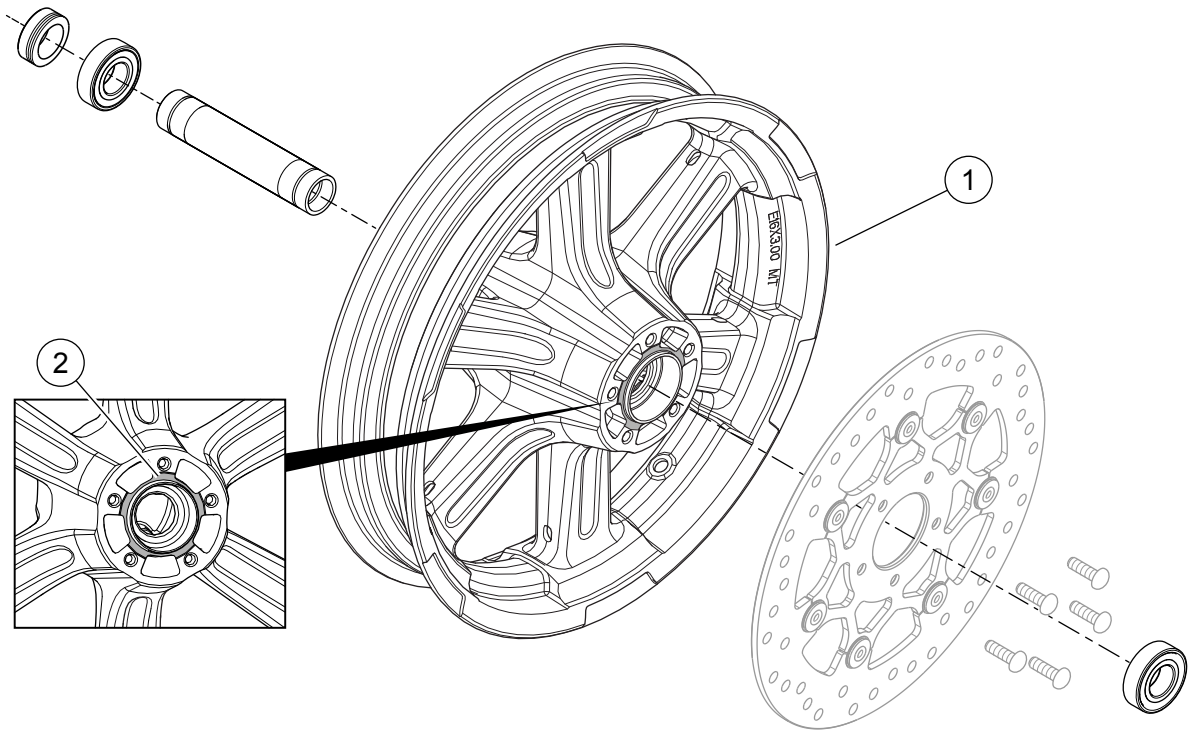


Figure 2. Service Parts: Front Machete Wheel Kit

Table 3. Service Parts and Wheel Kit Contents

Kit	Item	Description (Quantity)	Part Number
43300367, 43300368, 43300369, 43300370, 43300371, 43300372	1	Wheel	Not Sold Separately
Visual indicator mentioned in text:			
	2	Hub markings	

Table 4. FRONT 3/4 Inch Bearing Wheel Installation Kit (43833-07A)

FRONT 3/4 Inch Bearing Wheel Installation Kit (43833-07A)		ITEM (Quantity Used and Description)									
Fitment	Wheel Size	A	C	D	E	G	H	I	L	M	
2000-2006 FLST and FLSTF (except 2006 FLSTFSE2)	16 x 3.0 in	2	0	1	0	0	0	0	*	*	
2000-2006 FLSTC and FLSTN	16 x 3.0 in	2	0	1	0	0	0	1	*	*	
2006 FLSTFSEI	17 x 3.5 in	2	0	1	0	0	0	1	*	*	
2008-later FLSTSB	18 x 3.5 in	2	0	***	0	***	0	0	*	*	
2000-2007 XL; 2000-2003 Dyna (except FXDWG)	19 x 2.5 in	2	0	0	1	0	0	0	*	*	
2000-2007 XL; 2000-2003 Dyna (except FXDWG)	21 x 2.15 in	2	0	0	1	0	0	0	*	*	
2000-2006 FXST/B/C; 2000-2005 FXDWG**	21 x 2.15 in	2	1	0	0	0	0	0	*	*	
2000-2006 FXSTS**	21 x 2.15 in	2	1	0	0	0	1	0	*	*	
2000-2006 FXSTD (Except FXSTDSE)**	21 x 2.15 in	2	1	0	0	1	0	0	*	*	
Installation kits are designed to work with many different wheel styles and fitments. Contact a Harley-Davidson dealer to verify that the wheel and installation kits are both designed and approved for the motorcycle they are being installed on. NOTES: * See NOTE above valve installation step in INSTALLATION to determine which valve stem to use for your particular kit. Discard other valve stem(s). ** The right side of the wheel is the primary bearing side for this fitment. *** See INSTALLATION section for separate hardware kit to be used for FLSTSB models.	A	Bearing, regular (2)						9267			
	C	Axle sleeve						43536-00			
	D	Axle sleeve						43608-00			
	E	Axle sleeve						43613-00			
	G	Spacer, axle						40910-00A			
	H	Spacer, axle						43313-98			
	I	Spacer, wheel						43617-00A			
L	Valve stem, short						43157-83A				
M	Valve stem, long						43206-01				

Table 5. FRONT 25 mm Bearing ABS Wheel Installation Kit (43851-11B)

FRONT 25 mm Bearing Wheel Installation Kit (43851-11B)		ITEM (Quantity Used and Description)									
Fitment	Wheel Size	A	C	G	H	J	L	M	N	O	
2018 and later FLSL, FLHC and FLDE	16 x 3.0 in	2	1	0	0	0	*	*	*	1	
2007 and later FLSTC, FLSTN and FLS (non-ABS)	16 x 3.0 in	2	1	0	1	1	*	*	*	0	
2008 and later FXDF	16 x 3.0 in	2	1	0	0	0	*	*	*	0	
2007 and later FLSTF and FLSTFB (non-ABS)	17 x 3.5 in	2	1	0	0	0	*	*	*	0	
2008 and later FLSTF and FLSTFB (non-ABS)	18 x 3.5 in	2	1	0	0	0	*	*	*	0	
2008 and later FXDF, 2012 and later FLD	18 x 3.5 in	2	1	0	0	0	*	*	*	0	
2007 and later FXS, FXST/B/C (non-ABS), 2008 and later FXDWG***	21 x 2.15 in	2	1	0	0	1	*	*	*	0	
2007 FXSTD***	21 x 2.15 in	2	1	1	0	1	*	*	*	0	
Installation kits are designed to work with many different wheel styles and fitments. Contact a Harley-Davidson dealer to verify that the wheel and installation kits are both designed and approved for the motorcycle they are being installed on. NOTES: * See NOTE above valve installation step in INSTALLATION to determine which valve stem to use for your particular kit. Discard other valve stem(s). ** Bearing shim installed under the primary bearing. *** The left side of the wheel is the primary bearing side for this fitment.	A	Bearing, regular (2)						9276			
	C	Axle sleeve						41349-07			
	G	Spacer, axle						41504-07			
	H	Spacer, axle						41695-07			
	O	Spacer, axle						41242-08			
	J	Bearing shim***						43315-07			
	L	Valve stem, short						43157-83A			
M	Valve stem, long						43206-01				
N	Valve stem, pull-thru						40999-87				

Table 6. FRONT 25 mm Bearing Wheel Installation Kit (42400008)

FRONT 25 mm Bearing Wheel Installation Kit (42400008)		ITEM (Quantity Used and Description)							
Fitment	Wheel Size	A	C	D	E	K	L	M	N
2015 and later XG500/XG750	17 x 2.5 in	2	1	0	0	0	1	0	0
2010 and later XL1200X; 2011 and later XL1200C	16 x 3.0 in	2	0	0	1	0	*	*	*
2008 and later XL (except XL1200X and 2011 and later XL883L)	19 x 2.5 in	2	1	0	0	1	*	*	*
2008 and later XL (except XL1200X and 2011 and later XL883L)	21 x 2.15 in	2	1	0	0	1	*	*	*
2013 and later FXSB (non-ABS)	21 x 3.5 in	2	0	1	0	0	*	*	*
Installation kits are designed to work with many different wheel styles and fitments. Contact a Harley-Davidson dealer to verify that the wheel and installation kits are both designed and approved for the motorcycle they are being installed on. NOTES: * See NOTE above valve installation step in INSTALLATION to determine which valve stem to use for your particular kit. Discard other valve stem(s). ** Bearing shim installed under the primary bearing.	A	Bearing, regular (2)						9276A	
	C	Axle sleeve						43906-08	
	D	Axle sleeve						43300200	
	E	Axle sleeve						11888	
	K	Bearing shim**						43315-07	
	L	Valve stem, short						43157-83A	
	M	Valve stem, long						43206-01	
N	Valve stem, pull thru						40999-87		

Table 7. FRONT 25 mm Bearing ABS Wheel Installation Kit (42400009A)

FRONT 25 mm Bearing ABS Wheel Installation Kit (42400009A)		ITEM (Quantity Used and Description)									
Fitment	Wheel Size	A	B	C	D	E	K	L	M	N	
2013 and later FXSB with ABS	21 x 3.5 in	1	1	0	1	0	0	1	0	0	
2014 and later XL1200X and XL1200C with ABS	16 x 3.0 in	1	1	0	0	1	0	*	*	*	
2014 and later XL (except XL1200C, XL1200X and XL883L) with ABS	19 x 2.5 in	1	1	1	0	0	1	*	*	0	
2014 and later XL (except XL1200C, XL1200X and XL883L) with ABS	21 x 2.15 in	1	1	1	0	0	1	*	*	0	
2017 and later XG500 and XG750 with ABS	17 x 2.5 in	1	1	1	0	0	0	*	*	*	
Installation kits are designed to work with many different wheel styles and fitments. Contact a Harley-Davidson dealer to verify that the wheel and installation kits are both designed and approved for the motorcycle they are being installed on. NOTES: * See NOTE above valve installation step in INSTALLATION to determine which valve stem to use for your particular kit. Discard other valve stem(s). ** Red side of bearing must be installed toward the wheel. The ABS bearing is the primary bearing. *** Bearing shim installed under the primary bearing.	A	Bearing, regular						9276A			
	B	Bearing, ABS**						9252			
	C	Axle sleeve						43906-08			
	D	Axle sleeve						43300200			
	E	Axle sleeve						11888			
	K	Bearing shim***						43315-07			
	L	Valve stem, short						43157-83A			
M	Valve stem, long						43206-01				
N	Valve stem, pull-thru						40999-87				

Table 8. FRONT 25 mm Bearing ABS Wheel Installation Kit (42400010A)

FRONT 25 mm Bearing ABS Wheel Installation Kit (42400010A)		ITEM (Quantity Used and Description)										
Fitment	Wheel Size	A	B	C	G	J	K	L	M	N	O	
2018 and later FLSL, FLHC, and FLDE	16 x 3.0 in	1	1	1	0	0	0	*	*	*	1	
2011 and later FLSTC, FLSTN and FLS with ABS	16 x 3.0 in	1	1	1	1	0	1	*	*	*	0	
2012 and later FXDF with ABS	16 x 3.0 in	1	1	1	0	0	0	*	*	*	0	
2011 and later FLSTF and FLSTFB with ABS	17 x 3.5 in	1	1	1	0	0	0	*	*	*	0	
2011 and later FLSTF and FLSTFB with ABS	18 x 3.5 in	1	1	1	0	0	0	*	*	*	0	
2012 and later FXDF and FLD with ABS	18 x 3.5 in	1	1	1	0	0	0	*	*	*	0	
2011 and later FXS, FXST and 2012 and later FXDWG with ABS	21 x 2.15 in	1	1	1	0	0	1	*	*	*	0	
Installation kits are designed to work with many different wheel styles and fitments. Contact a Harley-Davidson dealer to verify that the wheel and installation kits are both designed and approved for the motorcycle they are being installed on. NOTES: * See NOTE above valve installation step in INSTALLATION to determine which valve stem to use for your particular kit. Discard other valve stem(s). ** Red side of bearing must be installed toward the wheel. The ABS bearing is the primary bearing. *** Bearing shim installed under the primary bearing.	A	Bearing, regular						9276A				
	B	Bearing, ABS**						9252				
	C	Axle sleeve						41349-07				
	G	Spacer						41695-07				
	O	Spacer, axle						41242-08				
	J	Bearing shim***						41448-08				
	K	Bearing shim***						43315-07				
	L	Valve stem, short						43157-83A				
M	Valve stem, long						43206-01					
N	Valve stem, pull-thru						40999-87					