



# INSTRUCTIONS

J06532

2017-08-23



## DETACHABLE WINDSHIELD AND DOCKING HARDWARE KIT

### GENERAL

#### Kit Number

57400324, 57400330

#### Models

For model fitment information, please see the P&A Retail Catalog or the Parts and Accessories section of [www.harley-davidson.com](http://www.harley-davidson.com) (English only).

#### Additional Parts Required

##### ⚠ WARNING

Rider and passenger safety depend upon the correct installation of this kit. Use the appropriate service manual procedures. If the procedure is not within your capabilities or you do not have the correct tools, have a Harley-Davidson dealer perform the installation. Improper installation of this kit could result in death or serious injury. (00333b)

##### NOTE

*This instruction sheet references Service Manual information. A Service Manual for your model motorcycle is required for this installation and is available from a Harley-Davidson Dealer.*

#### Kit Contents

Figure 1 and Table 1, Figure 2 and Table 2.

### INSTALLATION

1. Remove Nacelle. See Service Manual.
2. See Figure 1. Assemble mounting hardware for windshield mounting. Assemble in the following order, and leave assembly loose:
  - a. Locate the mounting hardware supplied in the kit.
  - b. Place flat washer (2) and bushing (1) on bolt (3) and install on clamp (5). Tighten.
  - c. Install clamp assembly onto the fork tube with the clamp nut (4) rearward toward the rider.
3. Install Nacelle. See Service Manual.
4. Hook the two top windshield assembly "jaws" into the grooves of the top bushings, then slide the lower clamp assemblies up until the lower bushings firmly fit into the lower windshield "jaws".

5. Tighten mounting clamp hardware screw (3).  
Torque: 11 N·m (8 ft-lbs)
6. With windshield in place, tighten clamp assembly by first tightening clamp nut (4). Be sure the clamp does not rotate during tightening.  
Torque: 6.8 N·m (60 in-lbs)

##### NOTE

*The mounting bushings must be parallel to the windshield brackets.*

7. Inspect windshield upon completion of installation. Be sure windshield mounting does not restrict full left or full right movement of front fork assembly.

##### ⚠ WARNING

Improper installation of accessories or loading of cargo can affect motorcycle stability and handling, which could result in death or serious injury. (00455b)

##### ⚠ WARNING

Failure to provide adequate clearance between stationary and moving parts can cause loss of control, which could result in death or serious injury. (00378a)

##### NOTE

*Check mounting hardware periodically. Never ride with loose mounts. A loose mounting causes extra stress on all other mounts, as well as the windshield itself, and could result in premature failure of components.*

### Care and Cleaning

##### NOTICE

**Polycarbonate windshields/wind deflectors require proper attention and care to maintain. Failure to maintain polycarbonate properly can result in damage to the windshield/wind deflector. (00483e)**

- Do not use benzene, paint thinner, gasoline or any other type of harsh cleaner on the windscreen/windshield. Doing so will damage the surface.
- Do not clean polycarbonate in hot sun or high temperature.
- Powdered, abrasive or alkaline cleanser will damage the windscreen/windshield.
- Sunlight reflections off of the inside curvature of a windscreen/windshield can, at certain times of the day, cause extreme heat build-up on motorcycle instruments. Exercise care in parking. Park facing the sun, place an opaque object over the instruments, or adjust the windscreen/windshield to avoid reflections.



- Do not use benzene, paint thinner, gasoline or any other cleaning agents on the rubber bushings. Doing so will damage the bushing surfaces.

**NOTE**

Covering the windshield with a clean, wet cloth for about 15 minutes before washing will make dried bug removal easier.

Harley-Davidson Windshield Water Repellent Treatment Part Number 99841-01 is approved for use on Harley-Davidson polycarbonate windshields.

**SERVICE PARTS**

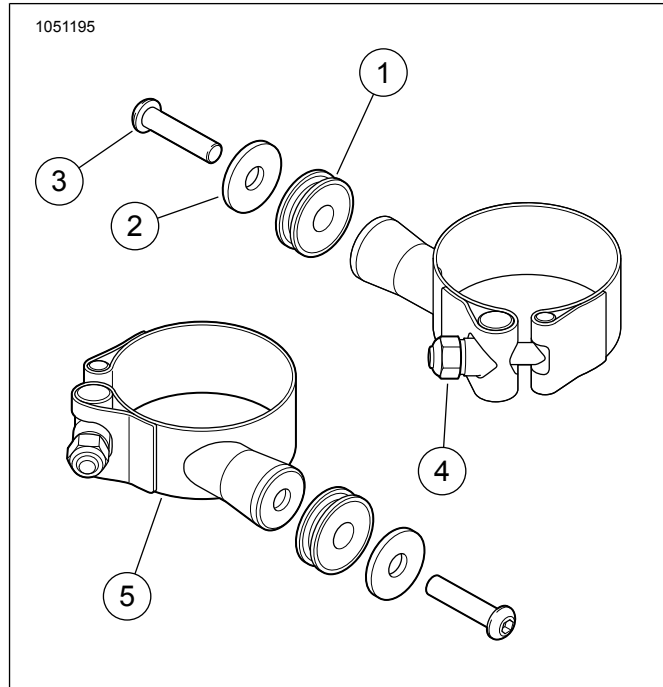


Figure 1. Clamp Assembly

Table 1. Service Parts: Docking Hardware Kit

Item	Description (Quantity)	Part Number
1	Bushing (4)	10200110
2	Washer (4)	10300129
3	1/4-20 button head torx screw (4)	10200588
4	1/4-20 lock nut (4)	7683
5	Assembly, Clamp, Band with Boss (4)	57300161

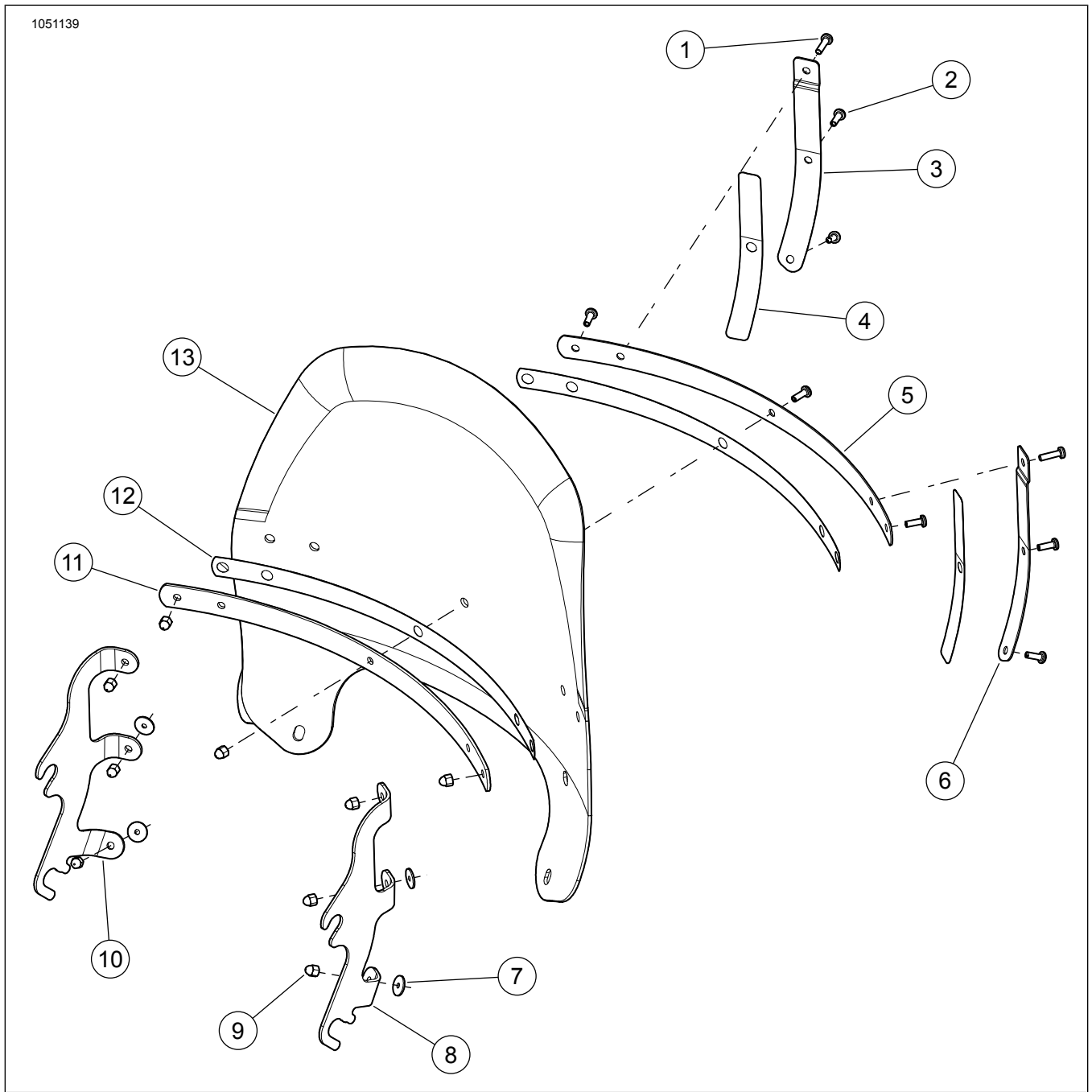


Figure 2. Windshield Assembly

Table 2. Service Parts: Windshield Kit

Item	Description (Quantity)	Part Number	Item	Description (Quantity)	Part Number
1	Panhead screws, TORX (2)	2452	8	Bracket, RH	57300146
2	Panhead screws, TORX (7)	2921A	9	Acorn nuts (9)	7651A
3	Outer brace, LH	57300145	10	Bracket, LH	57300147
4	Vertical tape (2)	11100168	11	Inner horizontal brace	57300142
5	Outer horizontal brace	57300144	12	Horizontal tape (2)	11100187
6	Outer brace, RH	57300143	13	15 in. Flip windshield kit, smoked	57400353
7	Washers (4)	58152-96		19 in. Flip windshield kit, clear	57400363