



INSTRUCTIONS

J02095

2003-09-26



DETACHABLE KING-SIZE WINDSHIELD FOR SOFTAIL MODELS WITH CHROME NACELLE AND PASSING LAMPS

GENERAL

Kit Number

58649-97A: Low profile, smoked windshield

58651-97A: Standard height, clear windshield

Models

For model fitment information, see the P&A retail catalog or the Parts and Accessories section of www.harley-davidson.com (English only).

These windshield kits fit 1986 and later FLSTC, FLSTF and FLSTN Softail models equipped with Chrome Headlight Nacelle Kit (67907-96) and Passing Lamp Kit.

Additional Parts Required

NOTE

A service manual for your model motorcycle is available from a Harley-Davidson Dealer.

Kit Contents

See Figure 2, and Table 1.

INSTALLATION

⚠ WARNING

Rider and passenger safety depend upon the correct installation of this kit. If the procedure is not within your capabilities or you do not have the correct tools, have a Harley-Davidson dealer perform the installation. Improper installation of this kit could result in death or serious injury. (00308b)

NOTE

Install nacelle first. Follow instructions provided in the nacelle kit. Then use instructions below to mount the passing lamps and windshield.

Before assembly, LOCTITE 242 MEDIUM STRENGTH THREADLOCKER ADHESIVE (BLUE) (Loctite 242) to screw threads that are threaded into the fork brackets.

- See Figure 1. With passing lamp assembly off of the vehicle, place top mounting hardware (21, 22, 23, 25, 26, and 28) on passing lamp brackets as shown. Tighten only the screws (25) located in the center position.

1999 and earlier models (A)

2000 and later models (B)

- Remove screws and washers from bottom hole in nacelle.

NOTE

See exceptions for the next step in Figure 1,(G).

- Fasten passing lamp spacers (24) to the passing lamp bracket. Put the bottom of the passing lamp bracket into position. Attach the bottom of the bracket with lower docking points (20) to fork bracket with screws (29) and chrome washers from the nacelle kit. Lightly snug lower screws.

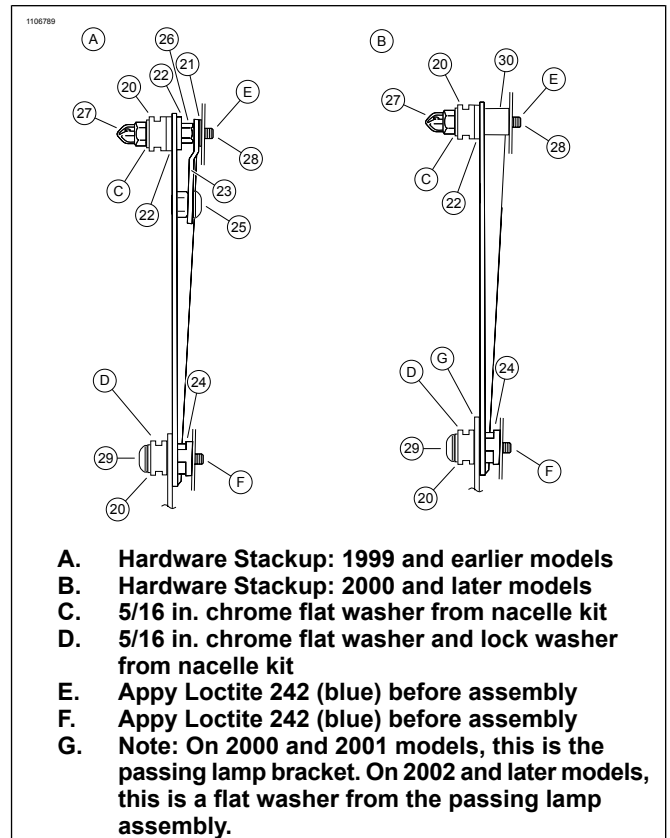


Figure 1. Hardware Stackup

- Remove screws and washers from the nacelle top holes.
- 1999 and earlier models, go to step 6. 2000 and later models, go to step 8.
- Put top of the passing lamp bracket into position and thread the set screws (28) into the top fork bracket holes until the set screws bottom. Allow the middle nuts (26) to remain free.
- Tighten middle nuts (26) against the adapter brackets (23). Go to step 9.
- Put top of the passing lamp bracket into position. Thread set screws (28) through the bracket and spacer (30) into top fork bracket holes until the set screws bottom.

9. Cover the exposed end of the set screws and upper docking points with washers and acorn nuts (27) from the nacelle kit. Tighten. 25.8 N·m (19 ft-lbs)
10. Install passing lamp switch into the hole drilled in the nacelle.

⚠ WARNING

Improper installation of accessories or loading of cargo can affect motorcycle stability and handling, which could result in death or serious injury. (00455b)

⚠ WARNING

Failure to provide adequate clearance between stationary and moving parts can cause loss of control, which could result in death or serious injury. (00378a)

INSTALLING/REMOVING THE WINDSHIELD

NOTE

Inspect windshield upon completion of installation. Be sure windshield mounting does not restrict full left or full right movement of front fork assembly. If restriction does occur, adjust windshield as needed until proper clearance is obtained. Have experienced Harley-Davidson service personnel correct any problems before riding with this accessory installed.

NOTE

Check mounting hardware periodically. Never ride with loose mounts. A loose mounting causes extra stress on all other mounts, as well as the windshield itself, and could result in premature failure of components.

1. Carefully lock bottom windshield assembly jaws into the grooves of the rubber docking bushings on the lower passing lamp bracket.

2. Hook top windshield assembly jaws into the grooves of the rubber docking bushings on the upper passing lamp bracket.
3. Firmly press the windshield into place until it is seated on the docking bushings.
4. To remove windshield, grab windshield edges on each side of the center brace and firmly pull the windshield loose from the docking bushings.

CARE AND CLEANING

NOTE

Sunlight reflections off of the inside curvature of a windshield can, at certain times of the day, cause extreme heat build-up on motorcycle instruments. Exercise care in parking. Park facing the sun, place an opaque object over the instruments, or adjust the windshield to avoid reflections.

NOTICE

Use only Harley-Davidson recommended products on Harley-Davidson windshields. Do not use harsh chemicals or rain sheeting products, which can cause windshield surface damage, such as dulling or hazing. (00231c)

Do not clean polycarbonate in hot sun or high temperature. Powdered, abrasive or alkaline cleanser will damage the windshield. Never scrape the windshield with a razor blade or other sharp instruments because permanent damage will result.

NOTE

Covering the windshield with a clean, wet cloth for about 15 minutes before washing will make dried bug removal easier.

Harley-Davidson Windshield Water Repellent Treatment Part Number 99841-01 is approved for use on Harley-Davidson windshields.

SERVICE PARTS

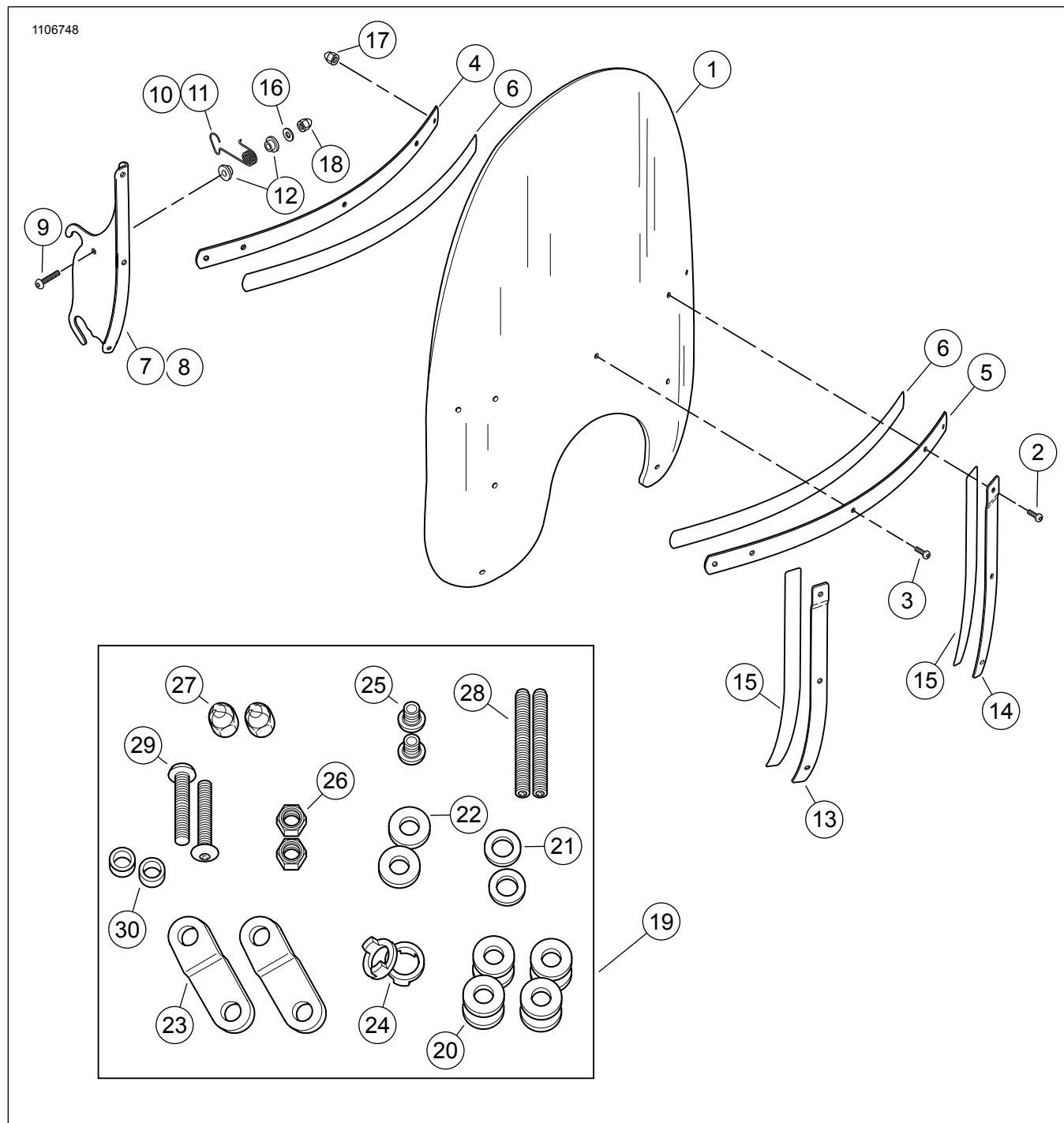


Figure 2. Service Parts: Windshield Kits

Table 1. Service Parts

Item	Description (Quantity)	Part No.	Item	Description (Quantity)	Part No.
1	Replacement Windshield Standard Standard Height, Clear Low Profile, Smoked	58657-97 58658-97	16	Washer, flat, 1/4 in/ (2)	6703
2	Screw, panhead, Torx (2)	2452	17	Acorn nut (9)	7651
3	Screw, panhead, Torx (7)	2921A	18	Acorn nut, 1/4-20 (2)	94004-90T
4	Windshield brace, Inner	58431-94	19	Hardware Kit (includes items 20 through 30)	85211-97B
5	Windshield brace, Outer	58428-94	20	Docking bushing (4)	67621-94
6	Windshield brace tape (2)	58416-77A	21	Washer, flat, 5/16, chrome (2)	94066-90T

Table 1. Service Parts

Item	Description (Quantity)	Part No.		Item	Description (Quantity)	Part No.
7	Windshield bracket, LH	58291-95		22	Washer, flat, 5/16, thick (4)	6400HB
8	Windshield bracket, RH	58292-95		23	Adapter bracket (2)	58373-96
9	Screws, buttonhead (2)	94426-95		24	Spacer, passing lamp (2)	5864A
10	Windshield Retainer, LH	58252-95		25	Screw, 5/16-24 x 3/8 in. (2)	3533
11	Windshield Retainer, RH	58253-95		26	Nut, hex, 5/16-24 (2)	94043-90T
12	Nylon Bushings (4)	58272-95		27	Acorn nut, 5/16-24 (2)	94007-90T
13	Brace, RH	58406-75A		28	Set screw, 5/16-24 x 2 in. (2)	3283
14	Brace, LH	58408-75A		29	Screw, 5/16-24 x 1-1/2 in. (2)	4176
15	Windshield brace tape (2)	58417-77		30	Spacer, chrome	5799