



INSTRUCTIONS

J05905

2018-01-16



PRIMARY COVER TRIM KIT

GENERAL

Kit Numbers

25600033, 25600034, 25600035, 25600044, 25800089, 25800100

Models

For model fitment information, see the P&A retail catalog or the Parts and Accessories section of www.harley-davidson.com (English only).

Kit Contents

This kit contains one cover trim, one bracket, two screws and these instructions. See Table 1 and Figure 1.

INSTALLATION

NOTE

- *Make sure that ambient temperature is **at least** 7 °C (45 °F) for proper adhesion.*
 - *Allow **AT LEAST** 24 hours after application before exposing the area to vigorous washing, strong water spray or extreme weather.*
 - *The adhesive bond will increase to maximum strength after about 72 hours at normal room temperature.*
1. Clean with a 50-50 mixture of isopropyl alcohol and distilled water. Allow to dry completely.
 2. See Figure 1. Test-fit the bracket (3) before removing the protective backing from the tape. The cutout fits over the Bar & Shield logo (A).
 3. Remove the protective backing from the tape. Install the bracket. Hold in place for 30 seconds.
 4. Secure the trim with two screws (1). Tighten to:
Torque: 3.4–4.2 N·m (30–37 **in-lbs**) *Trim screws*

CARE AND CLEANING GUIDELINES FOR BRASS PARTS

Cleaning Instructions

1. Verify part is dry and free of dirt or debris.
2. Place a small amount of Harley-Davidson® Chrome Clean & Shine on a microfiber cloth or detailing swab.
3. Using light pressure, rub the brass parts with the microfiber cloth. For hard to reach places or grooves, use the detailing swab.

Obtaining a Bright Finish

Brass parts will naturally age and darken with time. If a bright brass finish is preferred, place some Harley-Davidson Bare Metal Polish on a microfiber cloth and lightly rub on the brass parts until they reach the desired brightness.

Slowing the Natural Aging Process

To slow the aging process of the brass parts, place a small amount of Harley-Davidson Glaze Poly Sealant on a microfiber cloth or detailing swab, and lightly rub on the parts until the sealant has soaked in.

Precautions

- Use of non-recommended cleaning, polishing and protective products will result in the removal of the aged finish from the brass parts.
- Prolonged contact with certain items (hands, gloves, boots, dust, etc.) and exposure to the elements will also alter all surface finishes and is NOT considered a defect.
- Avoid cleaning parts with abrasive and aggressive chemicals and abrasive cleaning pads.
- Avoid ammoniated products and bleach.
- Prolonged exposure to water will alter the brass finish. Wipe down parts after contact with water.
- Excess rubbing may lighten the surface appearance of the part.

SERVICE PARTS

1051098

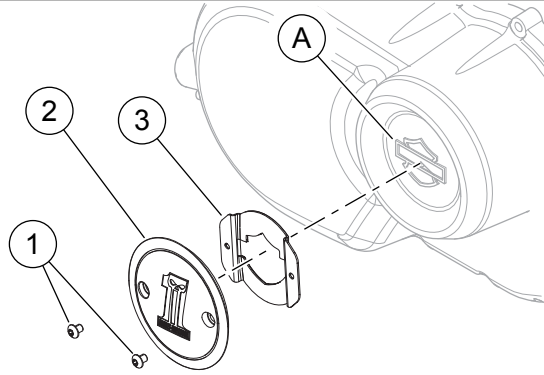


Figure 1. Service Parts: Primary Cover Trim Kit

Table 1.

Item	Description (Quantity)	Part Number
1	Button head cap screw, Torx (2) (Kits 25600033, 25600034, 25600035, 25600044)	94590-98
	Button head cap screw, Torx (2) (Kits 25800089, 25800100)	10200435
2	Cover trim (Kits 25600033, 25600034, 25600035, 25600044, 25800089)	94590-98
	Cover trim (Kit 25800100)	25800099
3	Bracket (Kits 25600033, 25600034, 25600035, 25600044, 25800089)	25600036
	Bracket (Kit 25800100)	25600043
Items mentioned in text, but not included in kit:		
A	Bar & Shield logo on primary cover	