



INSTRUCTIONS

J05906

2018-01-16



LEFT SIDE MEDALLION (ALTERNATOR ACCESS COVER) KITS

GENERAL

Kit Number

25700307, 25700308, 25700309, 25700460, 25800091, 25800114

Models

For model fitment information, see the P&A retail catalog or the Parts and Accessories section of www.harley-davidson.com (English only).

Kit Contents

See Figure 2 and Table 1.

REMOVAL

⚠ WARNING

To prevent accidental vehicle start-up, which could cause death or serious injury, remove main fuse before proceeding. (00251b)

1. See the owner's manual. Remove main fuse.
2. See Figure 1. Remove two screws (4). **For all kits except 25800091 and 25800114:** Retain screws for installation.
3. Remove and discard O-ring (2) and alternator access cover (3).

INSTALLATION

NOTE

Use the appropriate screws for the kit you are installing:

- **For kit 25800091 or 25800114:** See Figure 2. Use screws (1) included in the kit.
 - **For all other kits:** Use the original screws previously removed.
1. See Figure 2. Install **new** O-ring (2) on the spacer (5) (if installing Kit 25800091) or on the **new** alternator access cover (4 or 7).
 2. **For kit 25800114:** Install washers (6) onto screws (1).
 3. Secure the access cover (with spacer if installing Kit 25800091) with appropriate screws. Tighten screws.
Torque: 10–12 N·m (89–106 **in-lbs**) *Hex socket head screw*
 4. See the owner's manual. Install main fuse.

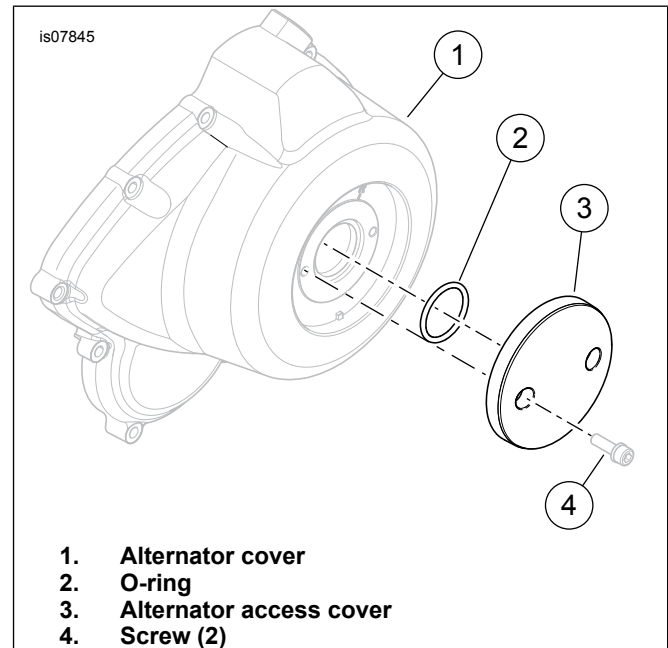


Figure 1. Alternator Access Cover

CARE AND CLEANING GUIDELINES FOR BRASS PARTS

Cleaning Instructions

1. Verify part is dry and free of dirt or debris.
2. Place a small amount of Harley-Davidson® Chrome Clean & Shine on a microfiber cloth or detailing swab.
3. Using light pressure, rub the brass parts with the microfiber cloth. For hard to reach places or grooves, use the detailing swab.

Obtaining a Bright Finish

Brass parts will naturally age and darken with time. If a bright brass finish is preferred, place some Harley-Davidson Bare Metal Polish on a microfiber cloth and lightly rub on the brass parts until they reach the desired brightness.

Slowing the Natural Aging Process

To slow the aging process of the brass parts, place a small amount of Harley-Davidson Glaze Poly Sealant on a microfiber cloth or detailing swab, and lightly rub on the parts until the sealant has soaked in.

Precautions

- Use of non-recommended cleaning, polishing and protective products will result in the removal of the aged finish from the brass parts.



- Prolonged contact with certain items (hands, gloves, boots, dust, etc.) and exposure to the elements will also alter all surface finishes and is NOT considered a defect.
- Avoid cleaning parts with abrasive and aggressive chemicals and abrasive cleaning pads.
- Avoid ammoniated products and bleach.
- Prolonged exposure to water will alter the brass finish. Wipe down parts after contact with water.
- Excess rubbing may lighten the surface appearance of the part.

SERVICE PARTS

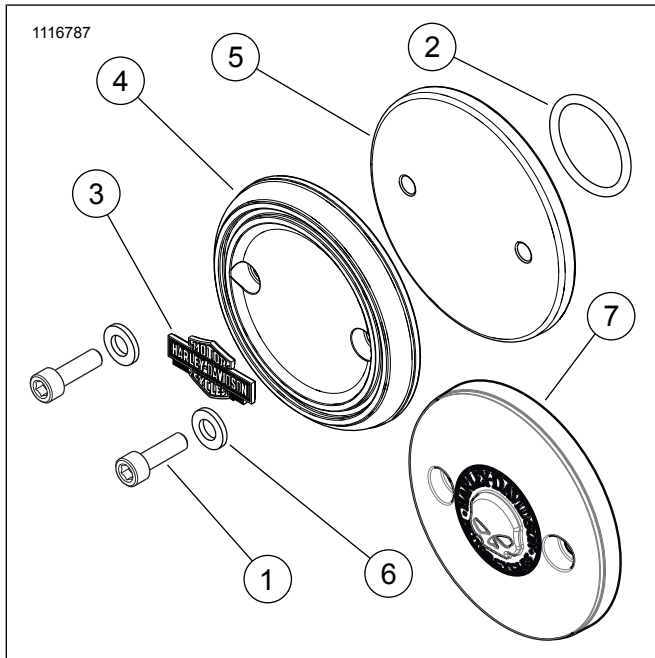


Figure 2. Service Parts: Alternator Access Cover Kit

Table 1. Service Parts: Alternator Access Cover Kit

Item	Description (Quantity)	Part Number
1	Screw (2) (Kits 25800091 and 25800114 only)	10200527
2	O-Ring	11900029
3	Medallion (Kit 25800091 only)	14100999
4	Alternator access cover (all but Kit 25800114)	Not Sold Separately
5	Spacer (Kit 25800091 only)	Not Sold Separately
6	Washer (2) (Kit 25800114 only)	10300117
7	Alternator access cover (Kit 25800114 only)	Not Sold Separately