



INSTRUCTIONS

J06639

2017-08-07



LICENSE PLATE RELOCATION KIT - FLHC

GENERAL

Kit Number

67900472

Models

For model fitment information, see the P&A Retail Catalog or the Parts and Accessories section of www.harley-davidson.com (English only).

Installation Requirements

⚠ WARNING

Rider and passenger safety depend upon the correct installation of this kit. Use the appropriate service manual procedures. If the procedure is not within your capabilities or you do not have the correct tools, have a Harley-Davidson dealer perform the installation. Improper installation of this kit could result in death or serious injury. (00333b)

⚠ WARNING

Keep tail lamp visible at all times. Do not place objects on license plate bracket blocking tail lamp visibility. Low visibility of rider can result in death or serious injury. (00123a)

NOTE

This instruction sheet references service manual information. A service manual for your model motorcycle is required for this installation and is available from a Harley-Davidson Dealer.

NOTE

When performing this installation, be careful not to scratch nearby painted or chrome surfaces.

Kit Contents

See Figure 7 and Refer to Table 1.

PREPARE

1. Remove main fuse. See service manual.
2. See Figure 1. Remove two screws (1).
3. Remove lens (2) from tail lamp assembly.

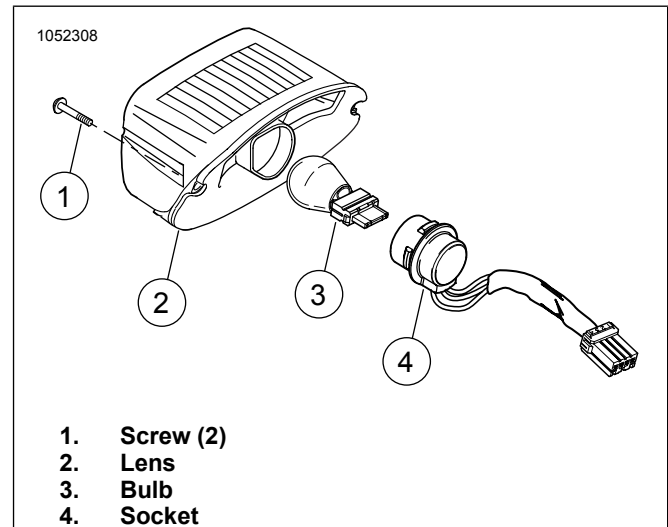


Figure 1. Tail Lamp Lens

REMOVE

1. Remove license plate bracket assembly. See service manual.
2. See Figure 2. Remove screws (1).
3. Disconnect connectors (2).
4. Remove light bar (3).

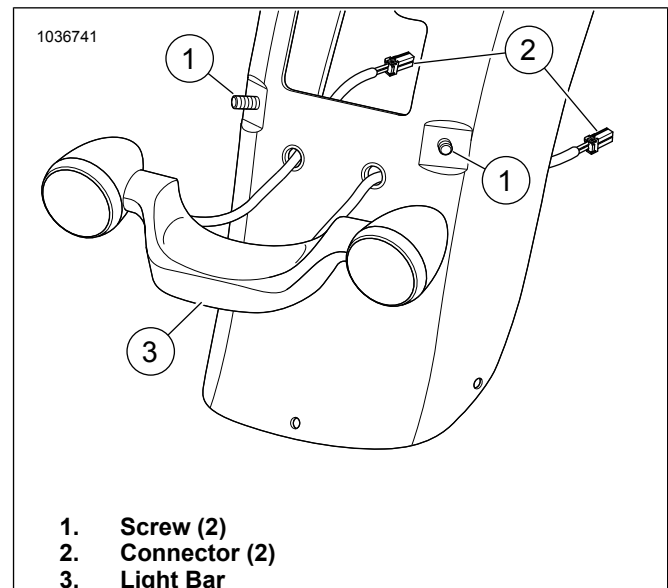


Figure 2. Incandescent Light Bar



INSTALLATION

1. **NOTE**
Install spacer with the hump pointing down.

See Figure 3. Position spacer (7) and license plate bracket (6) onto light bar.

2. Install lockwashers (5) and socket head screws (4). Tighten.
Torque: 6.8–9 N·m (60–80 **in-lbs**) *License plate bracket screw*
3. Route (12) license plate light wires (3) over hump in spacer (7) and license plate bracket (6).
4. See Figure 3. Install license plate light (9).
5. Install screws (8). Tighten.
Torque: 1.7 N·m (15 **in-lbs**) *License plate light screw*

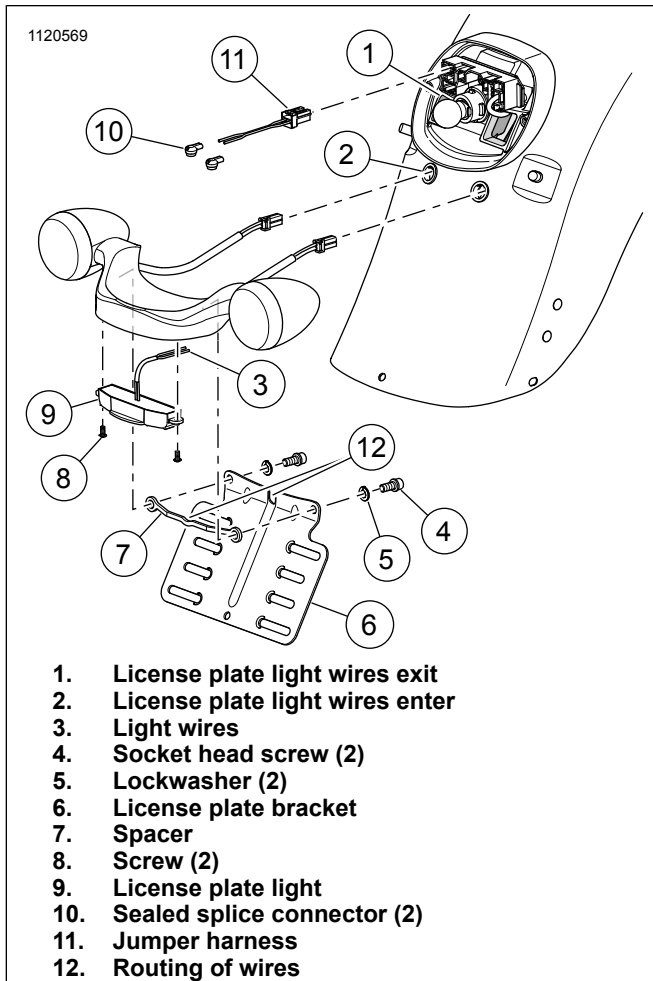


Figure 3. License Plate and Light

6. See Figure 2. Position light bar (3) on fender.
7. Route wires and harness.
 - a. Route harness ends through fender and connect connectors (2).

- b. See Figure 3. Route license plate light wires (2).

8. See Figure 2. Install screws (1). Tighten.
Torque: 22–27 N·m (16–20 ft-lbs) *Rear Turn Signal, Light Bar Mount, Screw*
9. See Figure 3. Route license plate wires behind fender and exit wires (1) through tail lamp.
10. See Figure 4. Splice jumper harness.
 - a. Pull license plate light wires (2) through brake light.
 - b. Position jumper harness (4) with wires (1) extended.
 - c. Splice wires (1, 2) using sealed splice connectors. See **WIRE SPLICING**.

NOTE
Wires are not polarity sensitive.

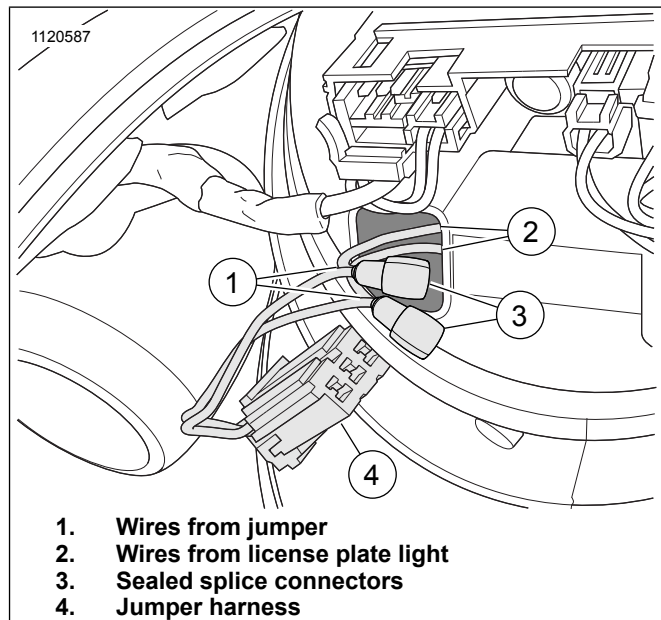


Figure 4. Splicing Wires

11. See Figure 5. Connect jumper harness (2) into tail lamp.

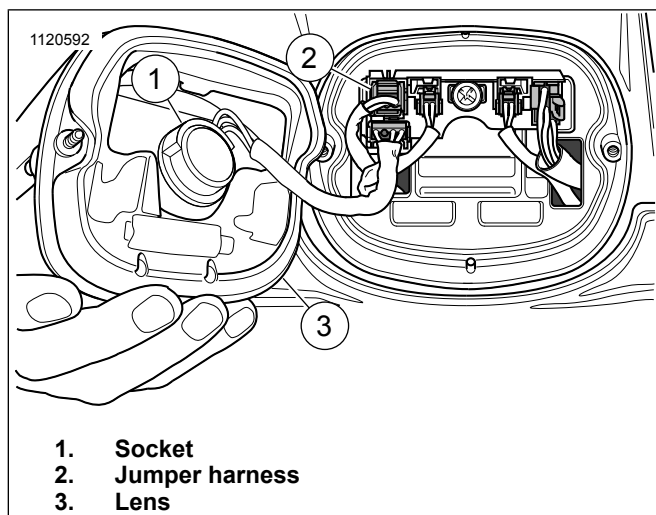


Figure 5. Jumper Harness Installed

12. See Figure 1. Install lens (2) and two screws (1). Tighten.
Torque: 2.3–2.7 N·m (20–24 **in-lbs**) *Tail Lamp Lens Screw*

WIRE SPLICING

1. Locate wires that require splicing.
2. Cut wires close to terminal end.
3. Insert wires (3) into splice connector and route past the internal splicing connector (1)
4. Crimp button from the up position (2) to the down position (4). Make sure:
 - a. Button (4) is flush with the rest of the splice connector.
 - b. Internal splicing connector (1) cuts into wires (5).
5. Repeat procedure to splice wires.

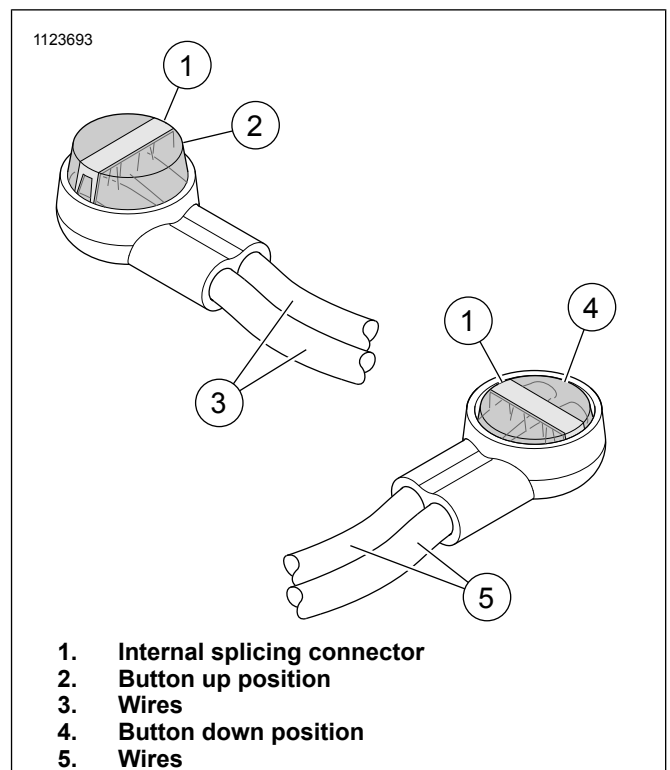


Figure 6. Splicing Wires

COMPLETE

1. Install main fuse. See service manual.

⚠ WARNING

Be sure that all lights and switches operate properly before operating motorcycle. Low visibility of rider can result in death or serious injury. (00316a)

2. Verify correct operation of license plate light.
3. **International models:** Install Item 5 to extend license plate bracket. See Figure 7.

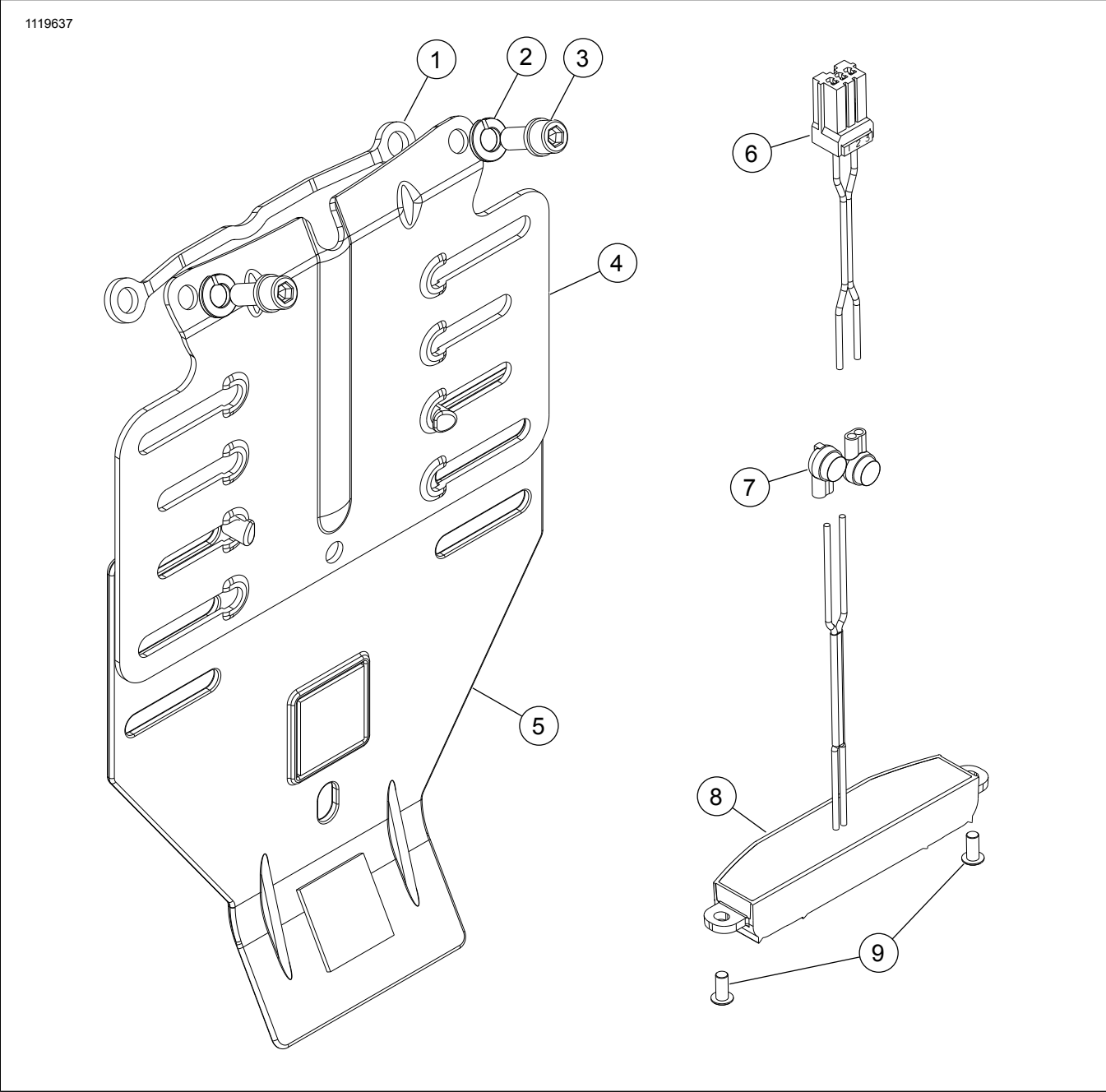


Figure 7. License Plate Relocation Kit

Table 1. Service Parts: License Plate Relocation Kit

Item	Description (Quantity)	Part Number
1	Spacer	12400100
2	Lockwasher (2)	7036
3	Socket head screw (2)	3061
4	License plate bracket	69380-09BHP
5	HDI Bracket mount	67900445
6	Jumper harness	69201861
7	Sealed splice connector (2)	69201499
8	License plate light	67900170
9	Screw (2)	2482