



INSTRUCTIONS

J06464

2020-05-15



HEADLAMP NACELLE KITS

GENERAL

Kit Numbers

61300811, 61300817

Models

For model fitment information, see the P&A retail catalog or the Parts and Accessories section of www.harley-davidson.com (English only).

⚠ WARNING

Rider and passenger safety depend upon the correct installation of this kit. Use the appropriate service manual procedures. If the procedure is not within your capabilities or you do not have the correct tools, have a Harley-Davidson dealer perform the installation. Improper installation of this kit could result in death or serious injury. (00333b)

NOTE

This instruction sheet refers to service manual information. A service manual for this year/model motorcycle is required for this installation. One is available from a Harley-Davidson dealer.

Installation Requirements

LOCTITE 243 MEDIUM STRENGTH THREADLOCKER AND SEALANT (BLUE) (99642-97)

Kit Contents

See Figure 2 and Table 1.

PREPARE

⚠ WARNING

To prevent accidental vehicle start-up, which could cause death or serious injury, remove main fuse before proceeding. (00251b)

NOTE

- **Vehicles WITH security siren:** With security fob present, turn ignition switch ON. After system is disarmed, turn ignition switch OFF. **IMMEDIATELY** remove main fuse. See service manual.
- **Vehicles WITHOUT security siren:** Remove main fuse. See service manual.

INSTALLATION

NOTE

Protect painted surfaces.

NOTE

Do not damage headlamp assembly during removal.

1. See Figure 2. Remove trim ring screw (6) and trim ring (5).
2. See Figure 1. Remove brake line clamp (2) from rear of nacelle.
3. Remove four original equipment (OE) screws securing nacelle at sides.
4. Remove two (OE) screws (8) and washers (9) securing nacelle to headlamp bracket.
5. Remove front and side nacelle panels.
6. If present, remove the three rubber pads from front of upper fork bracket at top edge of front nacelle panel.
7. Clean inside of top, back edge of **new** nacelle front panel (4) with a mixture of 50 to 70% isopropyl alcohol and 30 to 50% distilled water. Allow surface to dry thoroughly. Center trim (10) on panel edge with adhesive side of trim on inside of nacelle panel. Fully seat, remove liner from the adhesive, and compress to adhere to panel.
8. Install **new** nacelle front panel (4) and secure to headlamp bracket with two OE screws (8) and washers (9) removed earlier. Apply two drops of threadlocker to clean threads of screws. Tighten.
Torque: 9.6–11.8 N·m (85–104 in-lbs)
Consumable: LOCTITE 243 MEDIUM STRENGTH THREADLOCKER AND SEALANT (BLUE) (99642-97)
9. Install **new** nacelle side panels (1, 2) and secure with front panel (4) at sides using screws (3). Tighten.
Torque: 9.5–12.2 N·m (7–9 ft-lbs)

NOTE

If windshield is installed, reuse screws and windshield mounts to secure nacelle panels.

10. See Figure 1. Secure brake line clamp (2) to rear of nacelle. Apply two drops of threadlocker to clean threads of screw (1). Tighten.
Torque: 4.1–5.4 N·m (36–48 in-lbs)
Consumable: LOCTITE 243 MEDIUM STRENGTH THREADLOCKER AND SEALANT (BLUE) (99642-97)

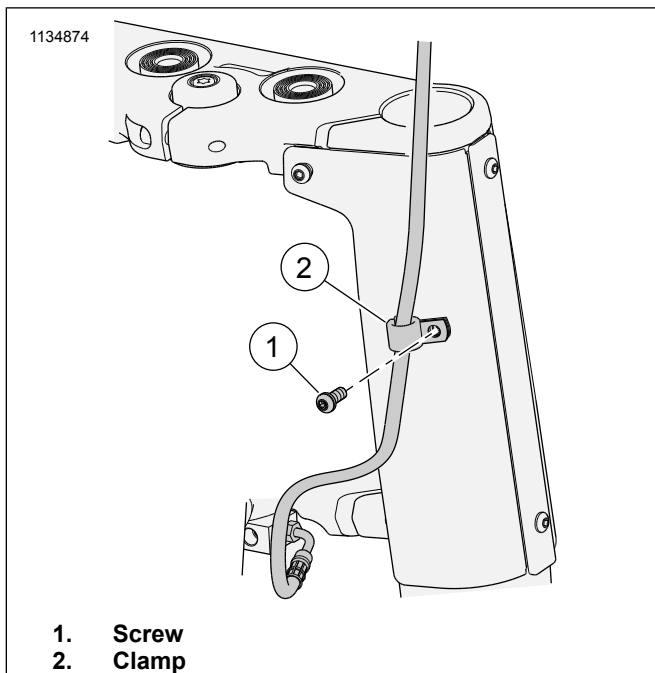


Figure 1. Brake Line Clamp (Typical)

COMPLETION

1. Install main fuse. See service manual.

⚠ WARNING

Be sure headlamp, tail and stop lamp and turn signals are operating properly before riding. Poor visibility of rider to other motorists can result in death or serious injury. (00478b)

2. Align headlamp. See the **Headlamp Adjustment** section in owner's manual.

SERVICE PARTS: Headlamp Nacelle Kits

Table 1. Service Parts

Item	Description (Quantity)	Part Number
1	Nacelle, right panel, black Nacelle, right panel, chrome	61300815 61300821
2	Nacelle, left panel, black Nacelle, left panel, chrome	61300814 61300820
3	Screw, TORX button head w/lockpatch, black (4) Screw, TORX button head w/lockpatch, chrome (4)	10200564 10200565
4	Nacelle, front panel, black Nacelle, front panel, chrome	Not sold separately Not sold separately
10	Trim, Nacelle	61400612
Items mentioned in text, but not included in kit		
5	Bezel, trim ring	
6	Screw	
7	Isolator (2)	
8	Screw (2)	
9	Washer (2)	

3. See Figure 2. Install the headlamp trim ring assembly (5) with screw (6). Ensure isolators (7) and rubber gasket are properly seated. Tighten.

Torque: 2.8–3.6 N·m (25–32 in-lbs)

SERVICE PARTS

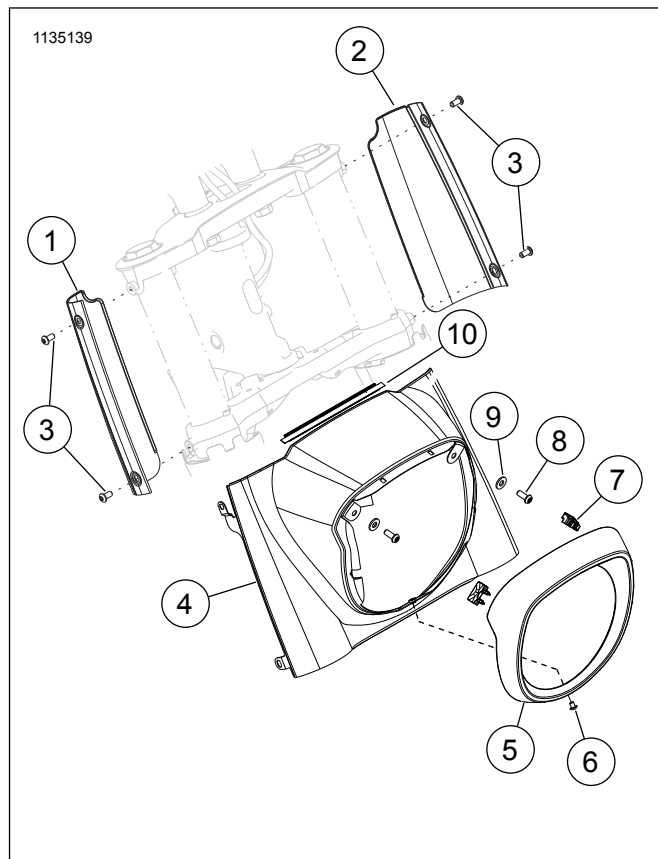


Figure 2. Service Parts: Headlamp Nacelle Kits