



INSTRUCTIONS

J06652

2020-03-05



BOOM! AUDIO 20S OR 20S EVO BLUETOOTH HEADSET

GENERAL

Kit Number

76000736A, 76000740A, 76000738

Models

NOTE

Installation on 2014-2015 FLHTKSE models will result in reduced satellite radio reception.

For model fitment information, see the Parts and Accessories (P&A) Retail Catalog or the Parts and Accessories section of www.harley-davidson.com (English only).

INSTALLATION REQUIREMENTS

Visit <https://serviceinfo.harley-davidson.com> for the latest instruction sheet.

NOTE

The headset will function differently based on whether it is:

- Paired to the **phone**.
- Paired to the **Wireless Headset Interface Module (WHIM)**.

Headset will **ONLY** pair to Harley-Davidson Boom!™ Box 6.5GT radio via a WHIM.

Headset **WILL NOT** pair directly to a Harley-Davidson radio via the radio's Bluetooth menu. There is no need to pair a headset to the phone with a WHIM.

If the vehicle has a WHIM installed, use the following instructions.

Pair with Phone (without WHIM)

Disregard this instruction sheet for all steps related to pairing and radio interaction. See the Sena User's Guide for mobile phone pairing or additional information pertaining to the wireless headset.

Pair with Boom! Box 6.5 GT Radio

These items are available at your local Harley-Davidson dealership.

- **2014 and later Touring and Trike models:** Separate purchase of WHIM (Part No. 76000768) is required.
- **2014-2018 Touring and Trike models:** Separate purchase of WHIM Harness (Part No. 69201726).
- Software flash in DIGITAL TECHNICIAN II (PART NUMBER: HD-48650). Performed by Harley-Davidson dealer.
- Radio software updated to most recent version. See www.H-D.com/infotainment-support.

How do I know that I have a WHIM?

If the **Wireless Headset** selection in Step 3 Figure 2 cannot be found in the menu as directed in the **Wireless Headset Setup**, the WHIM is not installed on the vehicle.

WIRELESS HEADSET

Please read the Sena User's Guide for additional information pertaining to the wireless headset. Also see www.H-D.com/infotainment-support for the latest version of the User's Guide and related information to Boom! Audio Bluetooth products or visit your local Harley-Davidson dealership.

Getting Started

Charge the wireless headset by connecting the supplied Universal Serial Bus (USB) power & data cable into a computer USB port or USB wall charger. You can use any standard micro-USB cable to charge. The Light Emitting Diode (LED) turns red while the headset is charging and turns blue when it is fully charged. It takes about 2.5 hours to be completely charged.

Powering On and Off

Press Jog Dial and Phone Button at the same time to power the headset either ON or OFF. When powering ON the headset, the blue LED appears while hearing ascending beeps. When powering OFF the headset, the red LED appears briefly and the headset turns off completely while hearing descending beeps.

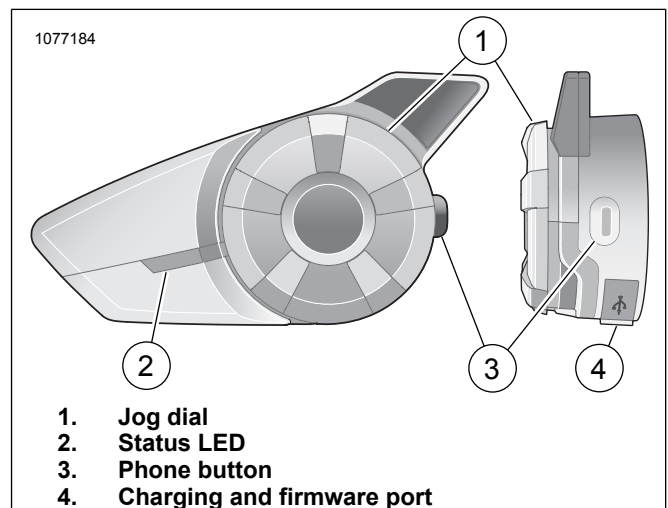


Figure 1. Boom Wireless Headset

Wireless Headset Setup

Before using the wireless headset with any Bluetooth devices for the first time, you will need to pair them together. For example, it can be paired with Bluetooth mobile phones, Bluetooth stereo devices such as MP3 players, or motorcycle



specific Bluetooth GPS navigation, and with other Boom! Audio Bluetooth headsets. This pairing operation is only required once for any Bluetooth device. The headset remains paired with the devices and automatically reconnects to them when they are within range. You will hear a high tone single beep and a voice prompt when the headset connects to the paired device automatically:

When a headset is paired to the motorcycle, it will say **Your Headset is Paired, Boom Audio Connected**. After this initial pairing, every time the headset connects to the motorcycle you will hear **Boom Audio Connected**.

When a headset is paired to a phone, it will confirm the pairing by saying **Your Headset is Paired**. After this initial pairing, every time the headset reconnects to the phone it will say **Phone Connected**.

1. Turn on wireless headset.
2. **Navigate:** Home > Setup.
3. See Figure 2. **Select:** Wireless Headset.



Figure 2. Select Wireless Headset

4. **NOTE**
Rider's headset should be paired first followed by the passenger.

See Figure 3. **Select:** Pair Rider Headset.



Figure 3. Pair Rider Headset

5. **NOTE**
Press phone button for 5 seconds until red and blue LED's alternately flash.

Put **Headset** into pairing mode.

6. **NOTE**
Harley Davidson headsets will show up as Boom Audio and the version of its software. See owner's manual of non-Harley Davidson headset products for display options.

See Figure 4. Confirm wireless headset display information on the touchscreen. Select the model of wireless headset to pair.



Figure 4. Place Headset Into Pairing Mode

7. Touchscreen will display **Pairing in Process with Headset**.
8. See Figure 5. Touchscreen will display confirmation status that the wireless headset has been Connected.

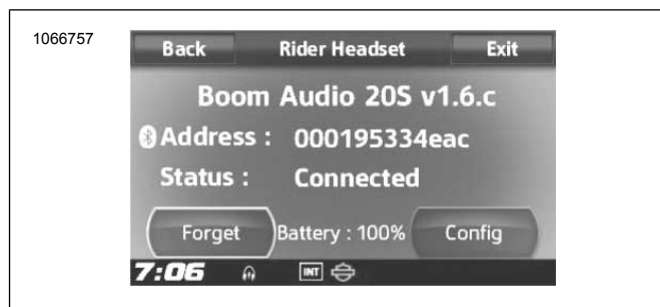


Figure 5. Paired Headset

9. Perform the same procedure for pairing the wireless headset for a passenger.

Headset to Headset Intercom Pairing

NOTE

When in pairing mode, do one device at a time in the area of the motorcycle and headset.

Please read the Sena User's Guide for information pertaining to the wireless headset to headset intercom set up and usage.

Headset Configurations

NOTE

The wireless headset must be turned on and paired with the system for the following configurations to appear on the touchscreen.

The headset configurations only affect headset performance when it is paired to a phone or other headset. They do not directly impact the performance of the headset when it is paired to the vehicle. The Sidetone and INT-Audio Overlay Sensitivity are the only two settings in the configuration options that will directly impact the headset when it is paired to a vehicle.

The 12 configuration modes can be accessed through the Boom! Box Infotainment system. Configuration options are only available for Harley 20S and 20S EVO headsets. They will not appear for non-Harley headsets or the SPH10.

Navigate: Home > Setup > Wireless Headset > Manage Rider or Passenger Headset > Config.

Smart Vol. Control: Smart Volume Control automatically changes the level of the speaker volume based on the level of the environmental noise. When it is disabled, volume is controlled manually. You can enable it by setting the sensitivity to low, medium, or high. Smart Volume Control responds to smaller environmental noises as the sensitivity level becomes higher. This factory setting is disabled.

SideTone: Sidetone is the sound of your own voice as picked up by your headset's microphone and reproduced in your own ear, by your own speaker. It helps you to naturally speak at the correct level according to varying helmet noise conditions. If this feature is enabled, you can hear what you are speaking during an intercom conversation or a phone call. This factory setting is disabled.

Voice Prompt: You can disable voice prompts, but the following voice prompts are always on:

- Voice prompts for configuration setting menu
- Voice prompts for battery level Indicator
- Voice prompts for factory reset
- Voice prompts for speed dial
- Voice prompts for FM radio functions

Adv. Noise Control: When Advanced Noise Control is enabled, the background noise is reduced during an intercom conversation. When it is disabled, the background noise is mixed with your voice during intercom. This factory setting is enabled.

Motion Sensitivity: Motion Sensor Sensitivity determines the sensitivity when you double tap on the surface of the Boom! Audio 20S EVO to enter voice command mode. The factory setting is low, but you may change it to high, or disable the feature.

VOX Phone: If this feature is enabled, you can answer incoming calls by simply saying a word loudly enough, unless you are connected to intercom. For example, when you hear a series of beeps for an incoming call, you can answer the phone by saying **Hello** or any other word loudly. However, the VOX Phone feature does not work if you are connected to the intercom. This feature is enabled from the factory but can be disabled through the configuration menu, Device Manager, or the Sena Smartphone App. If this mode is disabled, you have to tap the Jog Dial or the Phone Button to answer an incoming call.

HD Intercom: HD Intercom enhances the two-way intercom audio from normal quality to HD quality. HD Intercom will become temporarily disabled when you enter into a multi-way intercom. If this feature is disabled, the two-way intercom audio will change to normal quality. This factory setting is enabled.

Audio Multitasking: Audio Multitasking allows you to have an intercom conversation while simultaneously listening to music, FM radio, or GPS instructions. The overlaid audio is played in the background with reduced volume whenever there is an intercom conversation and will return to normal volume once the conversation is finished. If this feature is disabled, any incoming or outgoing intercom will interrupt your audio channel. This factory setting is enabled.

INT-Audio Sensitivity: INT-Audio Sensitivity changes the sensitivity level at which the headset detects you are speaking and turns on sidetones. Level 1 is the lowest sensitivity and you will have to speak very loud. Level 10 is the most sensitive

and will trigger with very little sound. Pending on riding conditions this may need to be adjusted due to ambient noise. The factory setting is 6.

Nav. App Support: When Audio Multitasking is enabled, your smartphone's Global Positioning System (GPS) application reduces in volume whenever there is an ongoing intercom conversation. To listen to your smartphone's GPS navigation clearly without this volume reduction, enable Navigation App Support. This factory setting is disabled.

Eight-way Intercom: Disabling the Eight-way Intercom optimizes the intercom performance for a small group up to four participants. Enabling the Eight-way Intercom optimizes the intercom performance for a larger group up to eight participants. This factory setting is disabled.

FM Station Guide: When FM Station Guide is enabled, FM station frequencies are given by voice prompts as you select preset stations. When FM Station Guide is disabled, the voice prompts on FM station frequencies will not be given as you select preset stations. This factory setting is enabled.

Headset Software Version

NOTE

The Boom! Audio 20S EVO supports firmware upgrade function. Visit www.harley-davidson.com to check for the latest software downloads.

The information given in this topic is only informational. The exact Model/Software Version and Address will vary upon the product that is paired to the vehicle.

See Figure 6. When the wireless headset is properly paired it will confirm:

- Model/Software Version:
- Bluetooth Address:
- Status: Connected

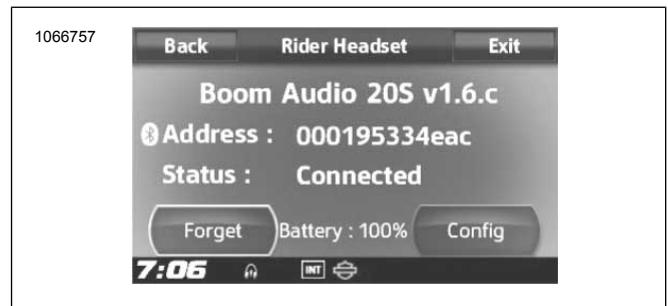


Figure 6. Paired Headset

Unpair Wireless Headset

1. Select **Home > Setup > Wireless Headset**
2. Select Manage **Rider** or **Passenger** headset.
3. See Figure 6. Press **Forget** to unpair rider or passenger wireless headset from the Boom system.

Reset Factory Headset Settings

NOTE

When performing this procedure, the link between the Boom Infotainment system and headset will be broken. The wireless

headsets must be paired again for system communications to operate properly.

1. To restore the Boom! Audio 20S EVO to factory default settings, press and hold the Phone Button for 12 seconds until the LED shows solid red and you hear double beeps. You will hear a voice prompt saying **Factory reset**.
2. Within 5 seconds, press the Jog Dial to confirm reset. The headset will be restored to factory settings and switched off automatically. You will hear a voice prompt saying **Headset reset, good-bye**.
3. If you press the Phone Button or don't press the Jog Dial within 5 seconds, the reset attempt is canceled and the headset returns to stand-by mode. You will hear a voice prompt saying **Canceled**.
4. Unpair current wireless headset(s) in Boom system. See Unpair Wireless Headset in this section.
5. Perform pairing procedure. See Wireless Headset Setup in this section.

Fault Reset

When the Boom! Audio 20S EVO is not working properly or is in faulty status for any reason, you may reset by pushing the pin-hole reset button at the back of the headset main unit. Insert a paper clip into the reset pin-hole and press the reset button for a second with light pressure. The Boom! Audio 20S EVO will be switched off, and you have to turn the system back on and try again. However, this will not restore the headset to factory default settings.

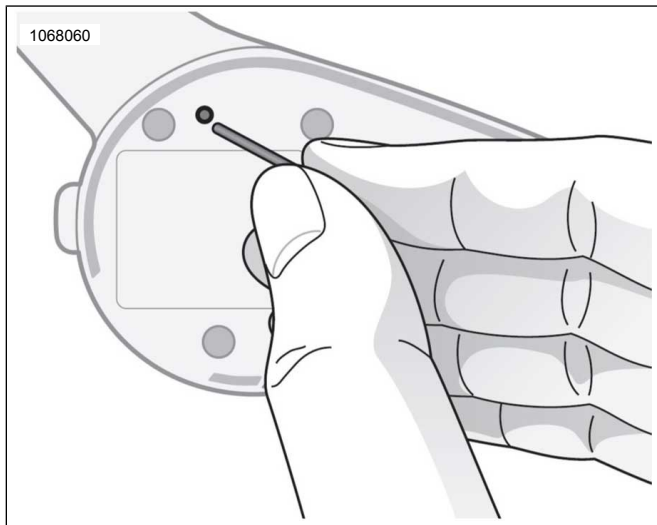


Figure 7. Fault Reset