



INSTRUCTIONS

J06306

2019-05-09



HIGH PERFORMANCE QUICK-INSTALL ADJUSTABLE PUSHRODS

GENERAL

Kit Number

17900058, 17900073, 17900081

Models

For model fitment information, see the P&A retail catalog or the Parts and Accessories section of www.harley-davidson.com (English only).

Kit Contents

See Figure 5 and Table 1.

⚠ WARNING

Rider and passenger safety depend upon the correct installation of this kit. Use the appropriate service manual procedures. If the procedure is not within your capabilities or you do not have the correct tools, have a Harley-Davidson dealer perform the installation. Improper installation of this kit could result in death or serious injury. (00333b)

NOTE

A service manual is available from your Harley-Davidson dealer.

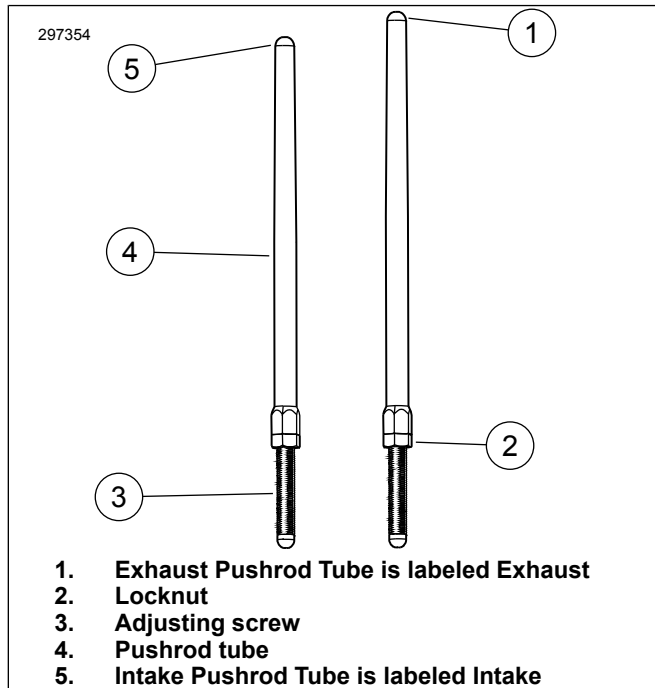


Figure 1. Adjustable Push Rod

INSTALLATION

⚠ WARNING

To prevent accidental vehicle start-up, which could cause death or serious injury, disconnect battery cables (negative (-) cable first) before proceeding. (00307a)

⚠ WARNING

Disconnect negative (-) battery cable first. If positive (+) cable should contact ground with negative (-) cable connected, the resulting sparks can cause a battery explosion, which could result in death or serious injury. (00049a)

NOTE

When removing the stock pushrods as described in step 1 below, do not cut pushrods using a method that creates metal debris, which may end up in the engine (such as using a hacksaw or die grinder) and cause severe damage.

1. Remove stock pushrods using a bolt cutter.
2. Place the motorcycle on a hydraulic center stand with the rear wheel raised off the ground. Remove spark plugs.
3. See Figure 4. With transmission in gear use rear wheel to turn engine over until both front cylinder tappets are at their lowest point (1).

NOTE

See Figure 2. Lower portions of adjusting screw with reduced thread height and machined flats are not used for locking adjustment. Locknut should only be used on section with full threads.

4. See Figure 1. Loosen locknut on all of the pushrods and adjust them to their shortest length.
5. See Figure 3 and Figure 5. Install the intake pushrods into the pushrod covers. Replace O-rings, lower pushrod cover and spring cover keeper with new components supplied in kit. Be sure adjuster end of pushrod is down.
6. Insert the pushrod (within the pushrod tube) into the front cylinder head intake pushrod hole (hole closest to the cylinder) then slip the adjuster end of the pushrod into the lifter cover.
7. Follow Adjusting Procedure below to adjust the pushrod.

NOTE

Pushrod adjustment must be made with engine cold.



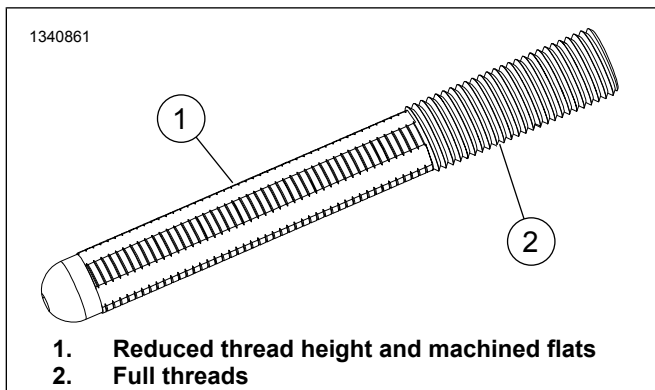


Figure 2. Adjuster Screw Threads

ADJUSTING PROCEDURE

1. Figure 4. Adjust pushrod length to zero clearance by hand. Verify that the top of the pushrod tube (5) rests inside the cup in the rocker arm (6) and the bottom end of the adjusting screw (3) rests in the cup of the lifter (2).
2. See Figure 1. With the pushrod adjusting screw kept from rotating with a 5/16 in. wrench, slowly turn the pushrod tube with a 1/2 in. wrench, 2-1/2 complete turns clockwise (lengthening the pushrod) as viewed from the bottom. (There is a dot on the flats of the pushrod tube that can be used as a reference.)
3. Hold adjusting screw and tighten locknut with 1/2 in. open end wrench against the pushrod tube. If pushrod turns with locknut use three open end wrenches, one to hold the pushrod tube, one to hold adjusting screw and one to turn locknut.
4. Repeat Installation steps 4 through Adjusting Procedure step 3 for the exhaust pushrod.

NOTE

Wait ten minutes before turning engine over after adjusting front or rear cylinder pushrods. This wait allows tappets to bleed down and prevents bending pushrods or valves. Pushrods should turn freely and valves must be on their seats (closed) before turning over engine.

5. Wait ten minutes. With transmission in gear, use rear wheel to turn engine over until both rear cylinder tappets are at their lowest position.
6. Repeat steps Installation step 4 through Adjusting Procedure step 4 for the rear cylinder.
7. Install pushrod spring cap retainers on pushrod covers. Install spark plugs and return transmission to neutral.
8. Connect battery cables.

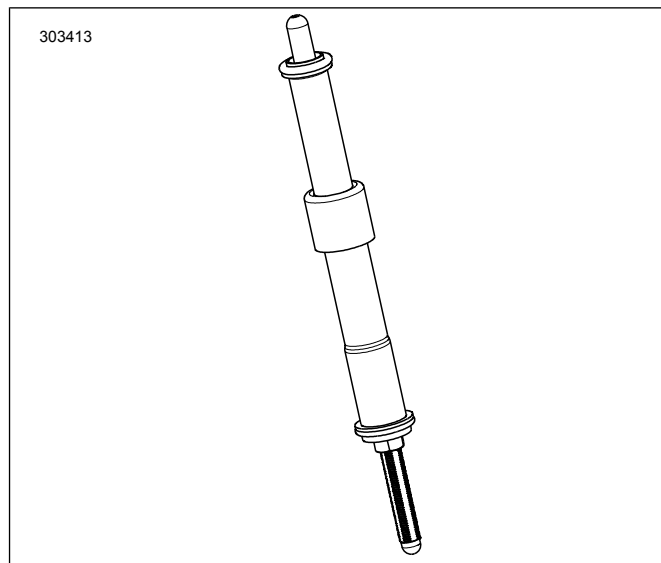


Figure 3. Pushrod Installed into Pushrod Cover

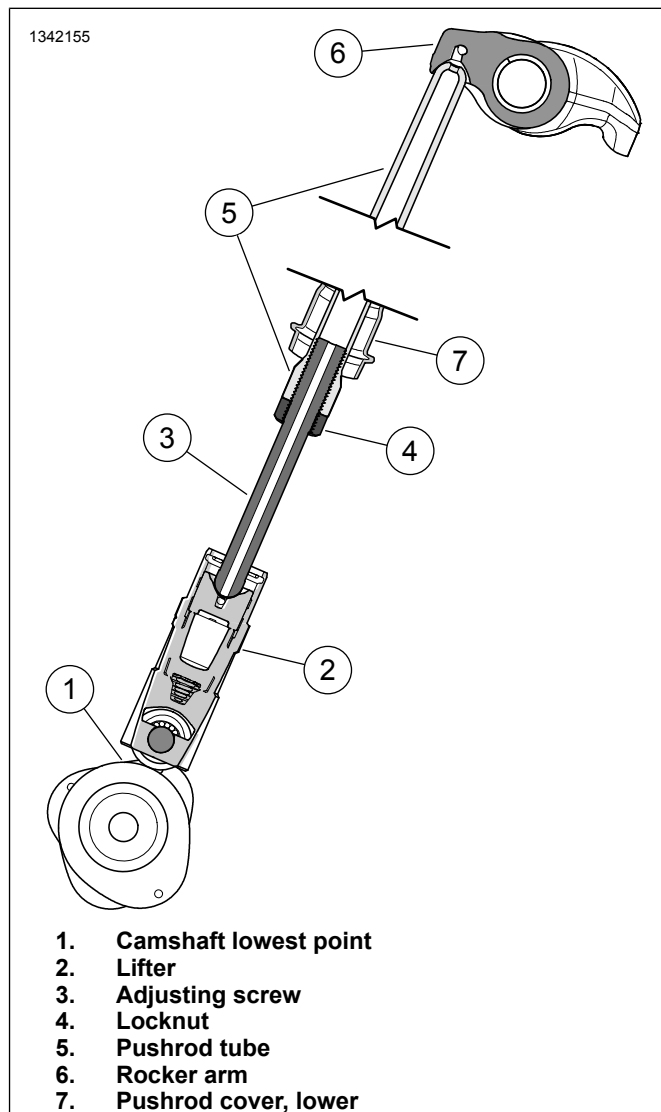


Figure 4. Pushrod Placement

⚠ WARNING

Connect positive (+) battery cable first. If positive (+) cable should contact ground with negative (-) cable connected, the resulting sparks can cause a battery explosion, which could result in death or serious injury. (00068a)

Service Parts

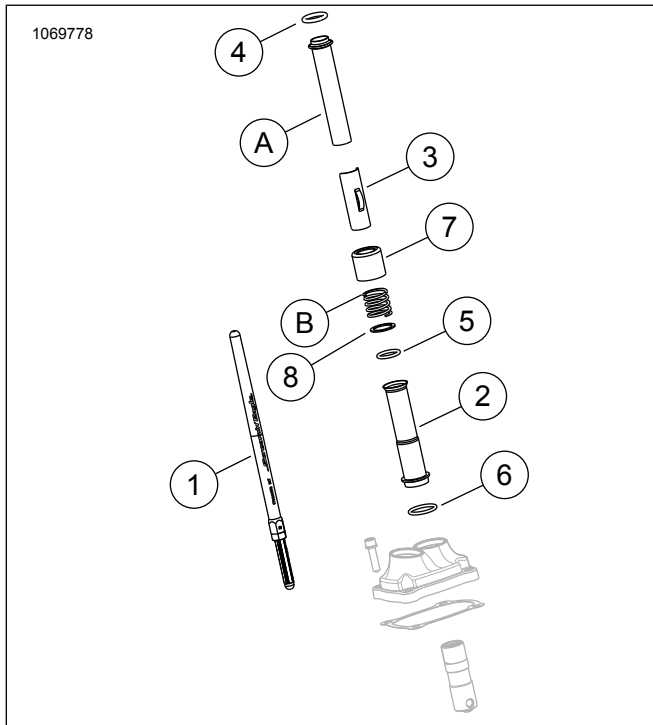


Figure 5. Service Parts

Table 1. Service Parts Table

Item	Description (Quantity)	Part Number
1	Pushrod assembly (Intake) (2)	Not Sold Separately
1	Pushrod assembly (Exhaust) (2)	Not Sold Separately
2	Pushrod cover, lower, chrome (4) Pushrod cover, lower, gloss black (4)	17938-83 Not Sold Separately
3	Keeper, pushrod spring cover (4)	Not Sold Separately
4	O-ring, pushrod cover, upper (4)	11293
5	O-ring, pushrod cover, lower (4)	11145A
6	O-ring, pushrod cover, middle (4)	11132A
7	Pushrod tube collar, chrome (4) Pushrod tube collar, gloss black (set of 4)	17945-36B 17900076
8	Washer (4)	6762D
OE items and above item 7 Pushrod tube collar, chrome (ONLY) reused during final assembly		
A	Upper pushrod cover (2)	
B	Cover spring (2)	