



INSTRUCTIONS

J06530

2018-01-16



RIGID MOUNT Sissy BAR UPRIGHT

GENERAL

Kit Numbers

52300502, 52300503

Models

For model fitment information, see the P&A retail catalog or the Parts and Accessories section of www.harley-davidson.com (English only).

Installation Requirements

⚠ WARNING

Rider and passenger safety depend upon the correct installation of this kit. If the procedure is not within your capabilities or you do not have the correct tools, have a Harley-Davidson dealer perform the installation. Improper installation of this kit could result in death or serious injury. (00308b)

Kit Contents

See Figure 2 and Refer to Table 1. and Table 2.

PREPARE

1. If vehicle equipped with rigid or detachable saddlebags.
 - a. Remove screws and saddlebags.
 - b. Remove docking points.

2. *NOTE*

Washers should be centered on inside of the four holes.

See Figure 2. Install narrow washers (4) to backrest assembly (3).

- a. Clean surface with a mixture of 50 percent isopropyl alcohol and 50 percent distilled water.
- b. Remove adhesive backing.
- c. Install and press firmly to adhere.

REMOVAL

1. See Figure 1. Remove OEM reflector (1) from each side of fender strut.
 - a. Saw behind reflectors with mono-filament fishing line or waxed dental floss.

- b. Use 3M GENERAL PURPOSE ADHESIVE REMOVER to remove remaining foam backing tape and adhesive from mounting surface.
- c. Clean surface with a mixture of 50 percent isopropyl alcohol and 50 percent distilled water.

2. Remove screws (4) from fender (2, 3).

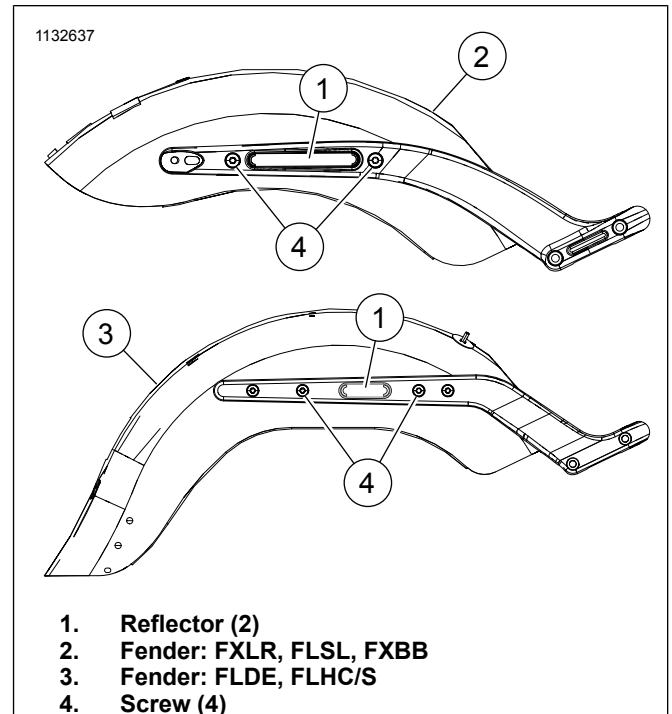


Figure 1. Fender Strut Screw

INSTALLATION

Without Saddlebags

NOTE

Make sure narrow washers (4) are installed prior to installation. See Prepare section.

1. See Figure 2. Install backrest assembly (3).
2. Install screws (5) from kit. Tighten.
Torque: 28–37 N·m (21–27 ft-lbs)
 - a. Wait a minimum of sixty seconds for the adhesive to compress and re-tighten screws (5).

3. Install reflectors (7) over decorative holes in sideplate.
 - a. Clean surface with a mixture of 50 percent isopropyl alcohol and 50 percent distilled water.
 - b. Remove adhesive backing.
 - c. Install and press firmly to adhere.

With Saddlebags

NOTE

Make sure narrow washers (4) are installed prior to installation. See Prepare section.

1. **NOTE**
Washers should be centered on outside of the four holes.

See Figure 2. Install wide washers (6) to backrest assembly (3).

- a. Clean surface with a mixture of 50 percent isopropyl alcohol and 50 percent distilled water.
- b. Remove adhesive backing.

- c. Install and press firmly to adhere.

2. Install backrest assembly (3).
3. Install reflectors (7) over decorative holes in sideplate.

- a. Clean surface with a mixture of 50 percent isopropyl alcohol and 50 percent distilled water.
- b. Remove adhesive backing.
- c. Install and press firmly to adhere.

4. Apply threadlocker. Install screws (5) originally removed from saddlebag or docking points.

Consumable: LOCTITE 243 MEDIUM STRENGTH THREADLOCKER AND SEALANT (BLUE) (99642-97)

5. Tighten screws (5).

Torque: 28–37 N·m (21–27 ft-lbs)

- a. Wait a minimum of sixty seconds for the adhesive to compress and re-tighten screws (5).

SERVICE PARTS

1132381

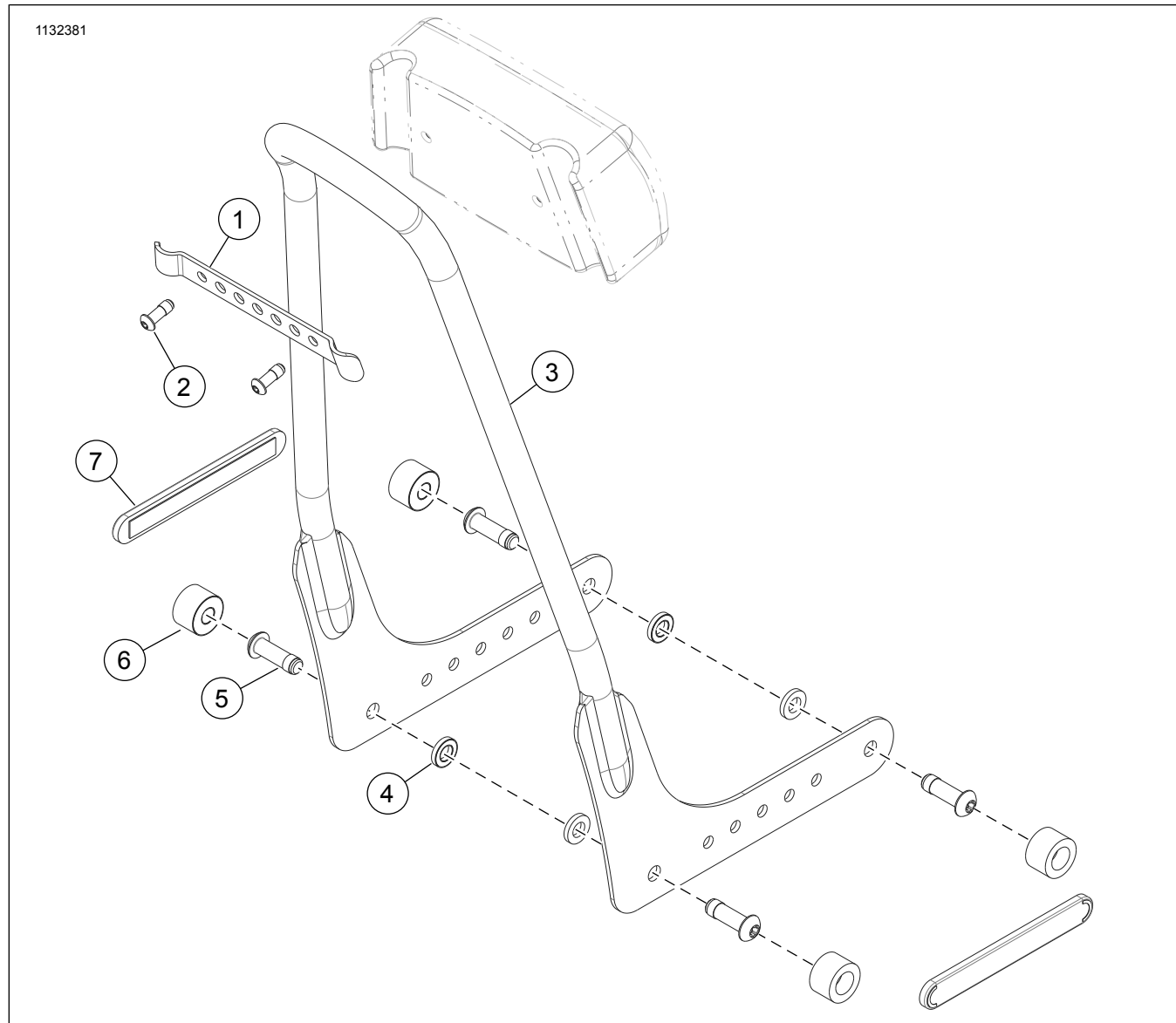


Figure 2.

Table 1. Service Parts 52300502 Black Backrest

Item	Description (Quantity)	Part Number
1	Backrest support	52300520
2	Screw, Button head Torx™ (2)	10200635
3	Backrest assembly	Not sold separately
4	Narrow spacer, adhesive backed (4)	Not sold separately
5	Screw, 3/8-16 Button head Torx™ (4)	10200601
6	Wide spacer, adhesive backed (4)	Not sold separately
7	Reflector (2)	69490-07

Table 2. Service Parts 52300503 Chrome Backrest

Item	Description (Quantity)	Part Number
1	Backrest support	52300521
2	Screw, Button head Torx™ (2)	10200636
3	Backrest assembly	Not sold separately
4	Narrow spacer, adhesive backed (4)	Not sold separately
5	Screw, 3/8-16 Button head Torx™ (4)	10200602
6	Wide spacer, adhesive backed (4)	Not sold separately
7	Reflector (2)	69490-07