



# INSTRUCTIONS

J06445

2018-08-20



## PREMIUM RIDE, HAND-ADJUSTABLE TRI-GLIDE SHOCKS

### GENERAL

#### Kit Number

54000165

#### Models

For model fitment information, see the P&A Retail Catalog or the Parts and Accessories section of [www.harley-davidson.com](http://www.harley-davidson.com) (English only).

#### Installation Requirements

Proper installation of this kit also requires separate purchase of LOCTITE 262 HIGH STRENGTH THREADLOCKER AND SEALANT (RED) (94759-99).

#### ⚠ WARNING

Rider and passenger safety depend upon the correct installation of this kit. Use the appropriate service manual procedures. If the procedure is not within your capabilities or you do not have the correct tools, have a Harley-Davidson dealer perform the installation. Improper installation of this kit could result in death or serious injury. (00333b)

#### NOTE

This instruction sheet references service manual information. A service manual for this year/model motorcycle is required for this installation. One is available from a Harley-Davidson dealer.

#### Kit Contents

See Figure 7 and Table 2.

#### PREPARE

1. Remove seat. See the service manual.

#### ⚠ WARNING

To prevent accidental vehicle start-up, which could cause death or serious injury, disconnect negative (-) battery cable before proceeding. (00048a)

2. Disconnect negative battery cable. See the service manual.
3. Remove side covers. See the service manual.
4. Remove the body. See the service manual.
5. See Figure 1. Remove rear lighting connectors and retainers from Original Equipment (OE) positions.

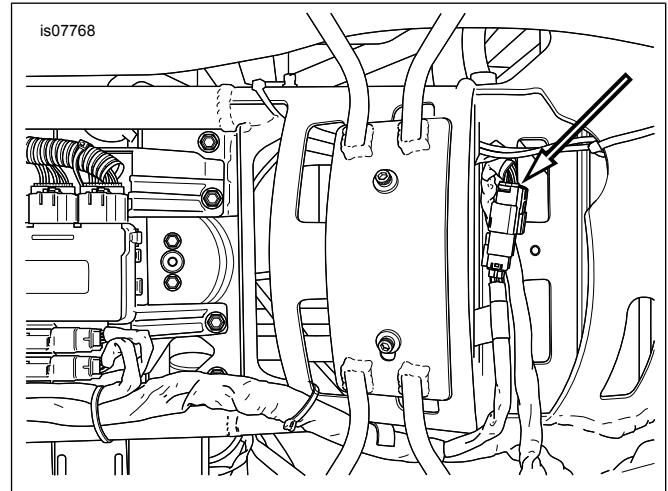


Figure 1. Rear Lighting Connector (typical)

#### REMOVAL

1. **NOTE**  
Both OE shocks must be removed before installing the shocks from this kit.

Remove rear shock absorbers and air lines. See the service manual.

#### ASSEMBLE

1. **NOTE**  
If necessary, lubricate the grommet and O-ring with a 50:50 mixture of isopropyl alcohol and water.

See Figure 7. Press grommet (9) onto adjuster base.

2. Place o-ring (8) inside cup in adjuster mounting bracket (11).
3. Place adjuster in mounting bracket so grommet rests inside bracket notch.
4. Install washer (3) and shoulder screw (7). Tighten.  
Torque: 4.4–6.4 N·m (39–57 in-lbs)

#### INSTALLATION

1. If lower shock mounts were removed, see the service manual to install.
2. Completely remove threadlocking compound from threaded shock mounting holes using a thread chaser.

3. See Figure 2 and Figure 3. Install line retainers with finger tabs pointing outboard.

4. **NOTE**

- Shock lines are color coded yellow for left side and white for right side.
- **Do not** loosen hose connections.
- Rotate shocks to remove twists from hoses.

See Figure 3. Orient shocks, hoses and adjuster as shown.

5. Apply threadlocker to lower shock bolts.

Consumable: LOCTITE 262 HIGH STRENGTH THREADLOCKER AND SEALANT (RED) (94759-99)

6. Install lower shock bolt (1) with washer (2) through lower shock bushing into lower shock mount.

7. Repeat previous step for other shock absorber.

8. Tighten lower shock bolts.

Torque: 74.6–81.4 N·m (55–60 ft-lbs)

9. Raise or lower jack to align upper shock bushing with threaded hole in frame.

10. Apply threadlocker to upper shock bolts.

Consumable: LOCTITE 262 HIGH STRENGTH THREADLOCKER AND SEALANT (RED) (94759-99)

11. Install upper shock bolt with washer.

12. Repeat previous step for other shock absorber.

13. Tighten upper shock bolts.

Torque: 74.6–81.4 N·m (55–60 ft-lbs)

14. See Figure 3. Feed adjuster and bracket through opening in frame as shown.

15. Install adjuster bracket mounting studs through 2 bottom holes in the frame.

16. Install lock nuts (4) on mounting bracket studs. Tighten.

Torque: 4.1–6.1 N·m (36–54 in-lbs)

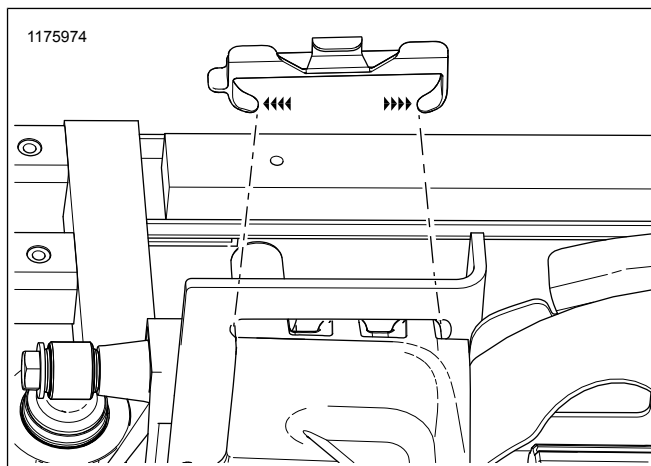
17. **NOTE**

Area between paint marks on shock hoses needs to be centered in shock hose retainers.

Install shock hoses in retainers.

18. See Figure 4. Re-route wire harness as shown, and secure harness with cable straps.

19. Rotate preload adjuster assembly through range of motion to confirm hoses and fittings move freely and do not contact wire harness or frame opening.



**Figure 2. Shock Hose Retainer Installation (right side shown)**

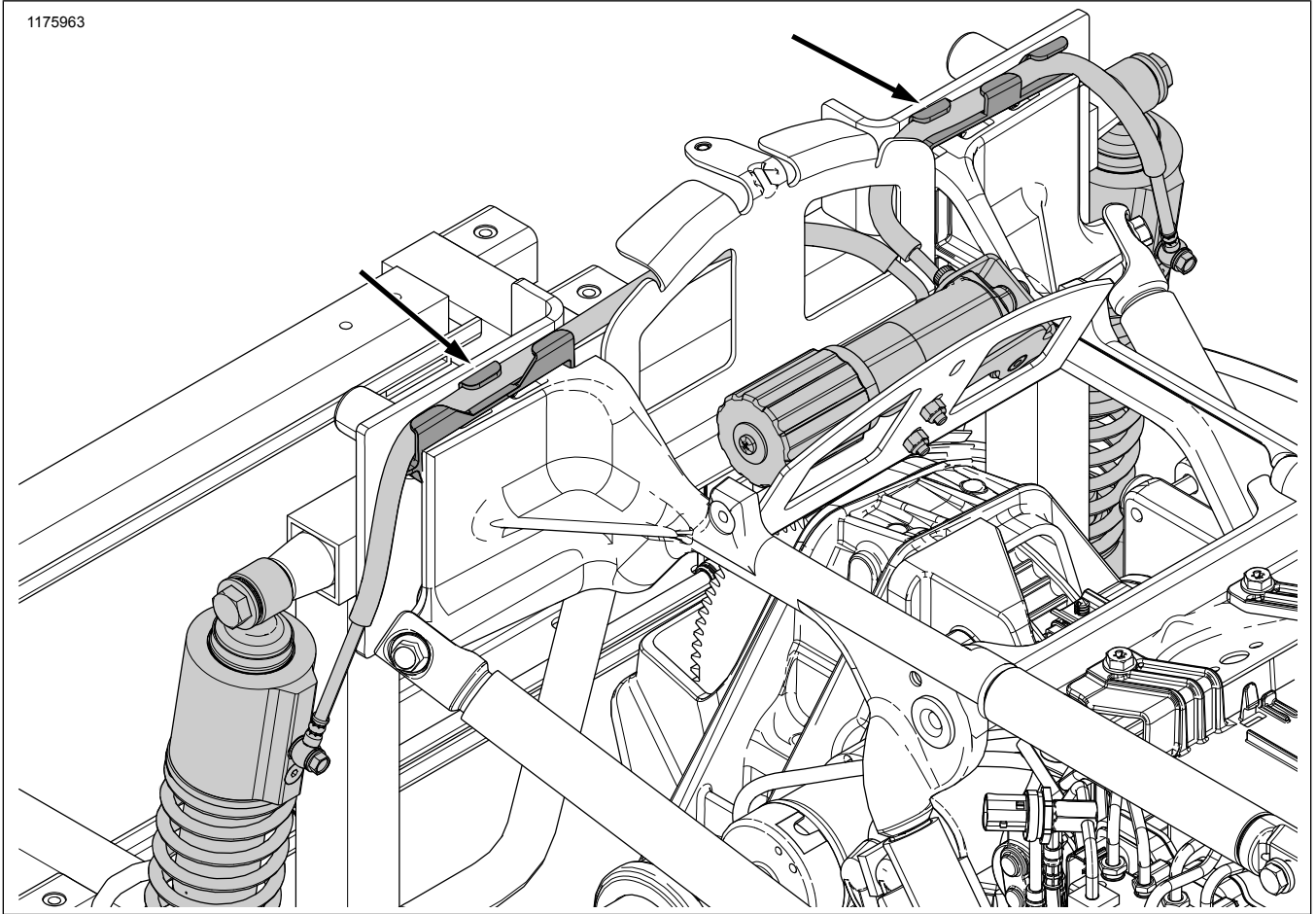


Figure 3. Shock Hose Routing and Retainer Location (parts removed for visibility)

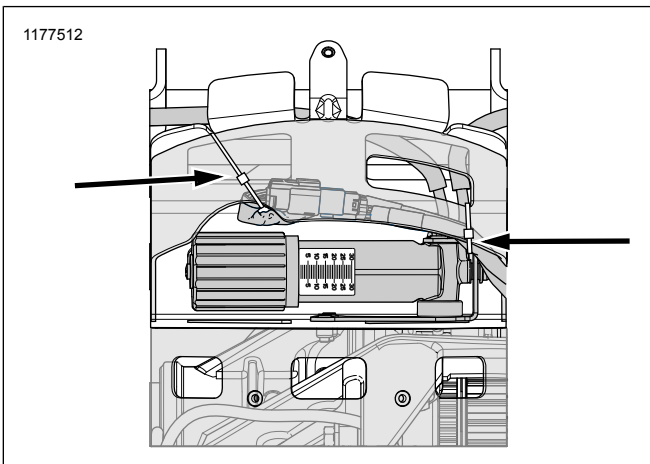


Figure 4. Cable Tie Locations (typical)

## Complete

### NOTICE

Wipe all fingerprints off of exhaust system components after installation and before starting engine. Oil from hands can leave permanent marks on exhaust system finish. (00346a)

1. Install the body. See the service manual.

2. **NOTE**

Always check lug nut torque within 805–1,610 km (500–1,000 mi) after wheel installation.

**If removed:** Install wheels and tighten lug nuts to 122–135.6 N·m (90–100 ft-lbs) in a cross-wise pattern.

3. Connect negative battery cable. See the service manual.
4. Install side covers. See the service manual.

## Shock Absorber Preload Adjustment

### ⚠ WARNING

Do not exceed the motorcycle's Gross Vehicle Weight Rating (GVWR) or Gross Axle Weight Rating (GAWR). Exceeding these weight ratings can lead to component failure and adversely affect stability, handling and performance, which could result in death or serious injury. (00016f)

### NOTE

Adjust rear suspension to suit load conditions, riding style and personal comfort. Increase preload to accommodate additional weight and cargo, reduce preload to accommodate less weight and cargo. Do not exceed maximum GVWR or GAWR.

1. See Figure 5. Rotate adjuster out of stowed position.

2. Refer to Table 1 and Figure 6. Rotate adjustment knob clockwise to increase preload setting, or counterclockwise to decrease preload setting until indicator knob shows appropriate preload setting on the scale. The knob will click after each half rotation.
3. Turn the knob half turns to fine tune the ride if desired.
4. Return adjuster to stowed position.
5. Install the seat.

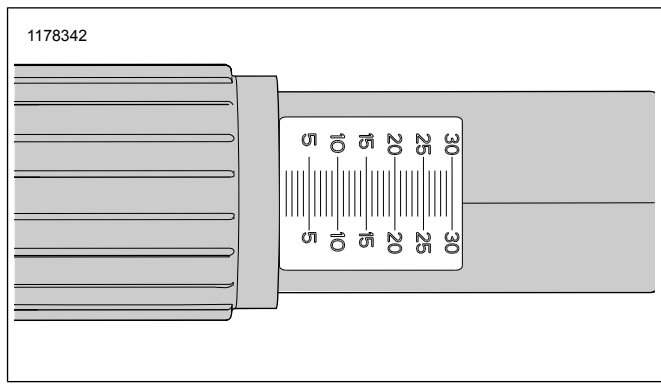


Figure 6. Adjuster Scale

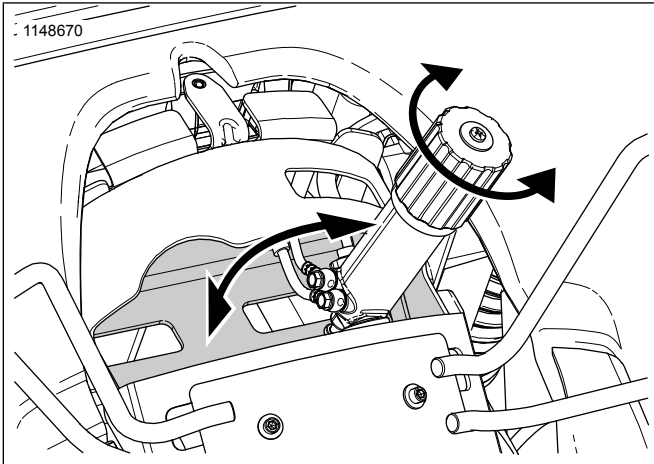


Figure 5. Rear Suspension Adjuster

Table 1. Suspension Preload Table: Models with Tour-Pak

		Additional Weight of PASSENGER, CARGO AND ACCESSORIES																			
		LB	0	10	20	30	40	50	60	70	80	90	100	110	120	130	140	150	160	170	180
		KG	0	5	9	14	18	23	27	32	36	41	45	50	54	59	64	68	73	77	82
RIDER WEIGHT																					
	LB	KG	Full Turns of Knob																		
150	68	0	0	0	0	1	3	4	5	6	8	9	10	11	12	14	15	16	17	19	19
160	73	0	0	0	1	2	3	5	6	7	8	10	11	12	13	14	16	17	18	19	19
170	77	0	0	1	2	3	4	6	7	8	9	10	12	13	14	15	17	18	19	20	20
180	82	0	0	2	3	4	5	6	8	9	10	11	12	14	15	16	17	19	20	21	21
190	86	0	1	2	4	5	6	7	8	10	11	12	13	15	16	17	18	19	21	22	22
200	91	1	2	3	4	6	7	8	9	10	12	13	14	15	17	18	19	20	21	23	23
210	95	2	3	4	5	6	8	9	10	11	13	14	15	16	17	19	20	21	22	24	24
220	100	2	4	5	6	7	8	10	11	12	13	15	16	17	18	19	21	22	23	NA	NA
230	104	3	4	6	7	8	9	10	12	13	14	15	17	18	19	20	22	23	NA	NA	NA
240	109	4	5	7	8	9	10	11	13	14	15	16	17	19	20	21	22	NA	NA	NA	NA
250	113	5	6	7	9	10	11	12	13	15	16	17	18	19	21	22	23	NA	NA	NA	NA
260	118	6	7	8	9	11	12	13	14	15	17	18	19	20	22	23	NA	NA	NA	NA	NA
270	122	7	8	9	10	11	13	14	15	16	17	19	20	21	22	NA	NA	NA	NA	NA	NA

# KIT CONTENTS

1177220

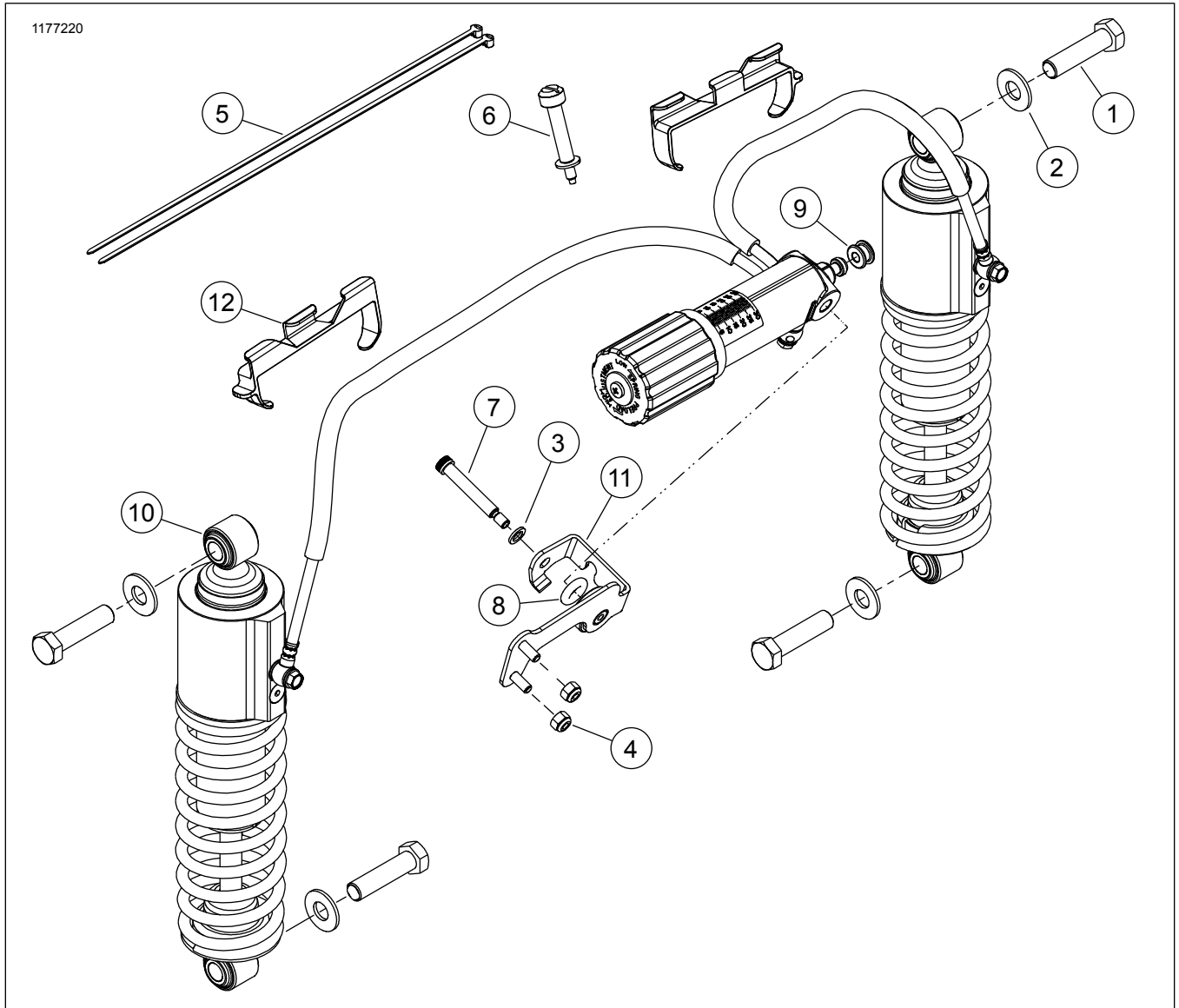


Figure 7. Service Parts

Table 2. Service Parts Table

Item	Description (Quantity)	Part Number
1	Screw, hex cap (4)	3607
2	Washer (4)	6590HW
3	Washer	6771A
4	Nut, hex lock (2)	7686
5	Cable strap (2)	10039
6	Screw, seat	10500113
7	Screw, shoulder	10500116
8	O-ring	11900132
9	Grommet	12100119
10	Shock assy w/dial adjust	54000200
11	Bracket, adjuster	54000148
12	Retainer, shock hose (2)	54000149