



# INSTRUCTIONS

J01854

2020-09-22



## FLSTC WINDSHIELD KIT

### GENERAL

#### Kit Numbers

- Kit 57733-00 contains a standard height, smoked windshield assembly.
- Kit 57734-00 contains a low profile, smoked windshield assembly.
- Kit 57748-04 contains a clear windshield that is two inches taller than a stock, clear windshield assembly.

#### Models

This kit is designed for installation on 2000 and later FLSTC model motorcycles equipped with a detachable windshield.

#### Kit Contents

See Figure 1 and Table 1.

### INSTALLATION

#### ⚠ WARNING

**Rider and passenger safety depend upon the correct installation of this kit. If the procedure is not within your capabilities or you do not have the correct tools, have a Harley-Davidson dealer perform the installation. Improper installation of this kit could result in death or serious injury. (00308b)**

#### NOTE

- Place shop rags on the headlamp and front of the fuel tanks to prevent scratches.
  - Keep front wheel straight to prevent brackets from scratching fuel tanks.
  - Be sure the windshield assembly does not contact chrome or painted parts. Contact will cause scratches.
1. Remove stock windshield. To remove windshield, grab windshield edges parallel with center brace and firmly pull windshield loose from bushing grooves.
  2. To install new windshield, carefully hook bottom windshield assembly "jaws" onto grooves of the rubber bushings on lower spotlamp bracket.
  3. Hook the two top windshield assembly "jaws" into the grooves of the top rubber bushings.
  4. Push windshield assembly onto bushings until properly seated into place.

#### NOTE

Inspect windshield upon completion of installation. Be sure windshield mounting does not restrict full left or full right

movement of front fork assembly. Restricted movement could affect handling, resulting in death or serious injury. If restriction does occur, adjust windshield as needed until proper clearance is obtained.

Have experienced Harley-Davidson service personnel correct any problems before riding with this accessory installed.

#### NOTE

Check mounting hardware periodically. Never ride with loose mounts. A loose mounting causes extra stress on all other mounts, as well as the windshield itself and could result in premature failure of either or both.

### Care and Cleaning

#### NOTE

Sunlight reflections off of the inside curvature of a windshield can, at certain times of the day, cause extreme heat build-up on motorcycle instruments. Exercise care in parking. Park facing the sun, place an opaque object over the instruments, or adjust the windshield to avoid reflections.

#### NOTICE

Polycarbonate windshields/wind deflectors require proper attention and care to maintain. Failure to maintain polycarbonate properly can result in damage to the windshield/wind deflector. (00483e)

#### NOTICE

Harley-Davidson windshields are made of Lexan. Lexan is a more durable and distortion-resistant material than other types of motorcycle windshield material, but still requires attention and care to maintain. Failure to maintain Lexan properly can result in damage to the windshield. (00230b)

#### NOTICE

Use only Harley-Davidson recommended products on Harley-Davidson windshields. Do not use harsh chemicals or rain sheeting products, which can cause windshield surface damage, such as dulling or hazing. (00231c)

#### NOTICE

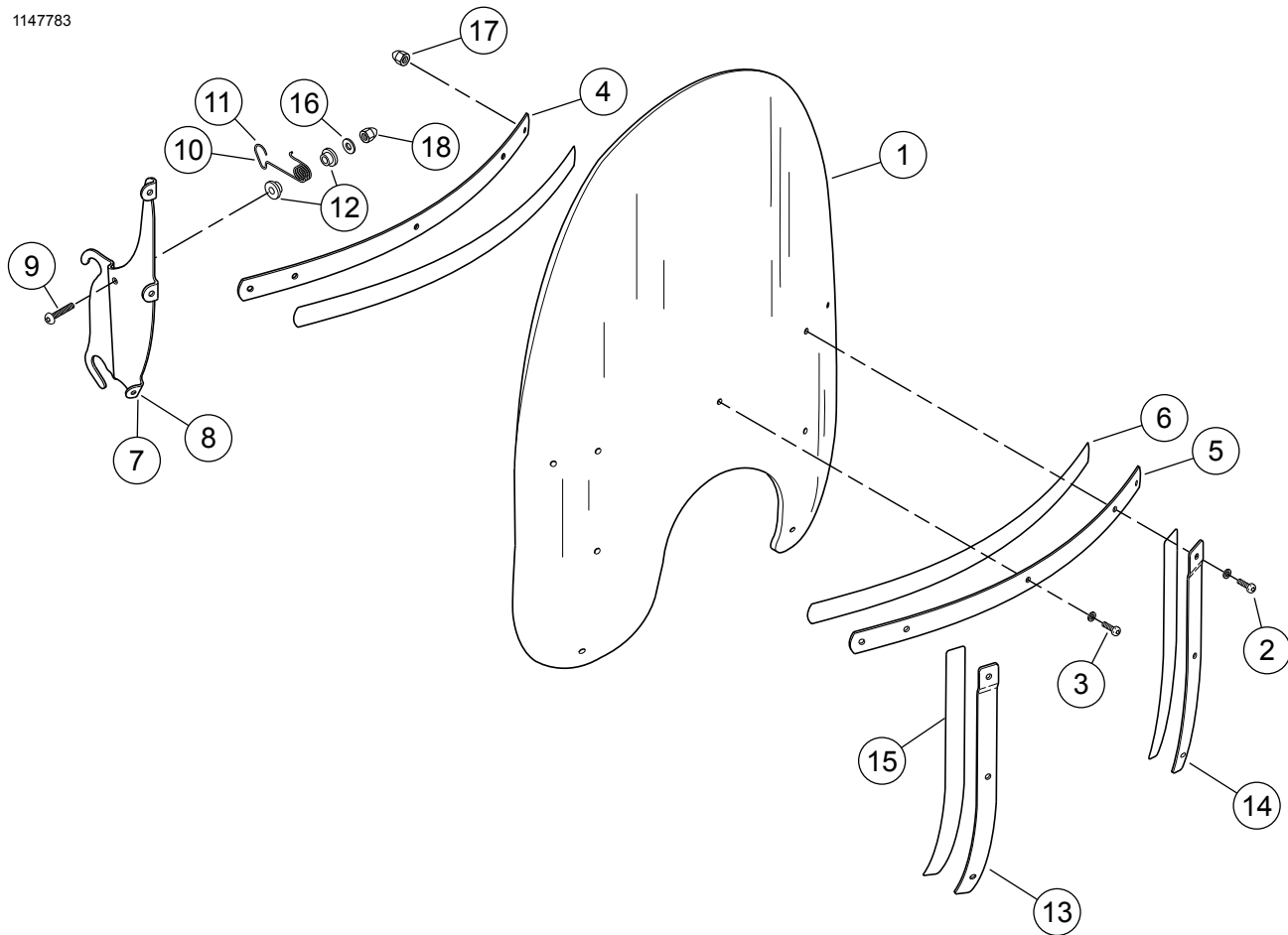
Do not use benzine, paint thinner, gasoline or any other type of harsh cleaner on the windshield. Doing so will damage the windshield surface. (00232c)

#### NOTE

Covering the windshield with a clean, wet cloth for about 15 minutes before washing will make dried bug removal easier.

## Service Parts

1147783



**Figure 1. Service Parts: Windshield Assembly**

**Table 1. Service Parts**

Item	Description	Quantity	Part No.
1	Replacement windshield: low smoked standard, smoked +2 inches, clear	1	58277-95 57975-99 57754-04
2	Panhead screws, Torx	2	2452
3	Panhead screws, Torx	7	2921
4	Inner windshield brace	1	58431-94
5	Outer windshield brace	1	58428-94
6	Windshield brace tape	2	58416-77A
7	LH windshield bracket	1	58291-95
8	RH windshield bracket	1	58292-95
9	Buttonhead screws	2	94426-95
10	LH windshield retainer	1	58252-95
11	RH windshield retainer	1	58253-95
12	Nylon bushings	4	58272-95
13	RH brace	1	58406-75A
14	LH brace	1	58408-75A
15	Windshield brace tape	2	58417-77
16	Flatwashers, 1/4 in.	2	6703
17	Acorn nuts	9	7651
18	Acorn nuts, 1/4-20	2	94004-90T

\*Appearance of windshield in illustration may vary from actual windshield depending on kit number.