



INSTRUCTIONS

J06236

2019-07-01



RUN/BRAKE/TURN AUXILIARY LIGHTS

GENERAL

Kit Numbers

67800589A, 69202276

Models

For model fitment information, see the P&A retail catalog or the Parts and Accessories section of www.harley-davidson.com (English only).

Installation Requirements

⚠ WARNING

Rider and passenger safety depend upon the correct installation of this kit. Use the appropriate service manual procedures. If the procedure is not within your capabilities or you do not have the correct tools, have a Harley-Davidson dealer perform the installation. Improper installation of this kit could result in death or serious injury. (00333b)

NOTE

This instruction sheet refers to service manual information. A service manual for this model motorcycle. One is available from a Harley-Davidson dealer.

Electrical Overload

NOTICE

It is possible to overload the vehicle's charging system by adding too many electrical accessories. If the combined electrical accessories operating at any one time consume more electrical current than the vehicle's charging system can produce, the electrical consumption can discharge the battery and cause damage to the vehicle's electrical system. (00211d)

⚠ WARNING

When installing any electrical accessory, be certain not to exceed the maximum amperage rating of the fuse or circuit breaker protecting the affected circuit being modified. Exceeding the maximum amperage can lead to electrical failures, which could result in death or serious injury. (00310a)

This Run/Brake/Turn Auxiliary Light Kit requires up to **1.325 A** additional current from the electrical system.

Kit Contents

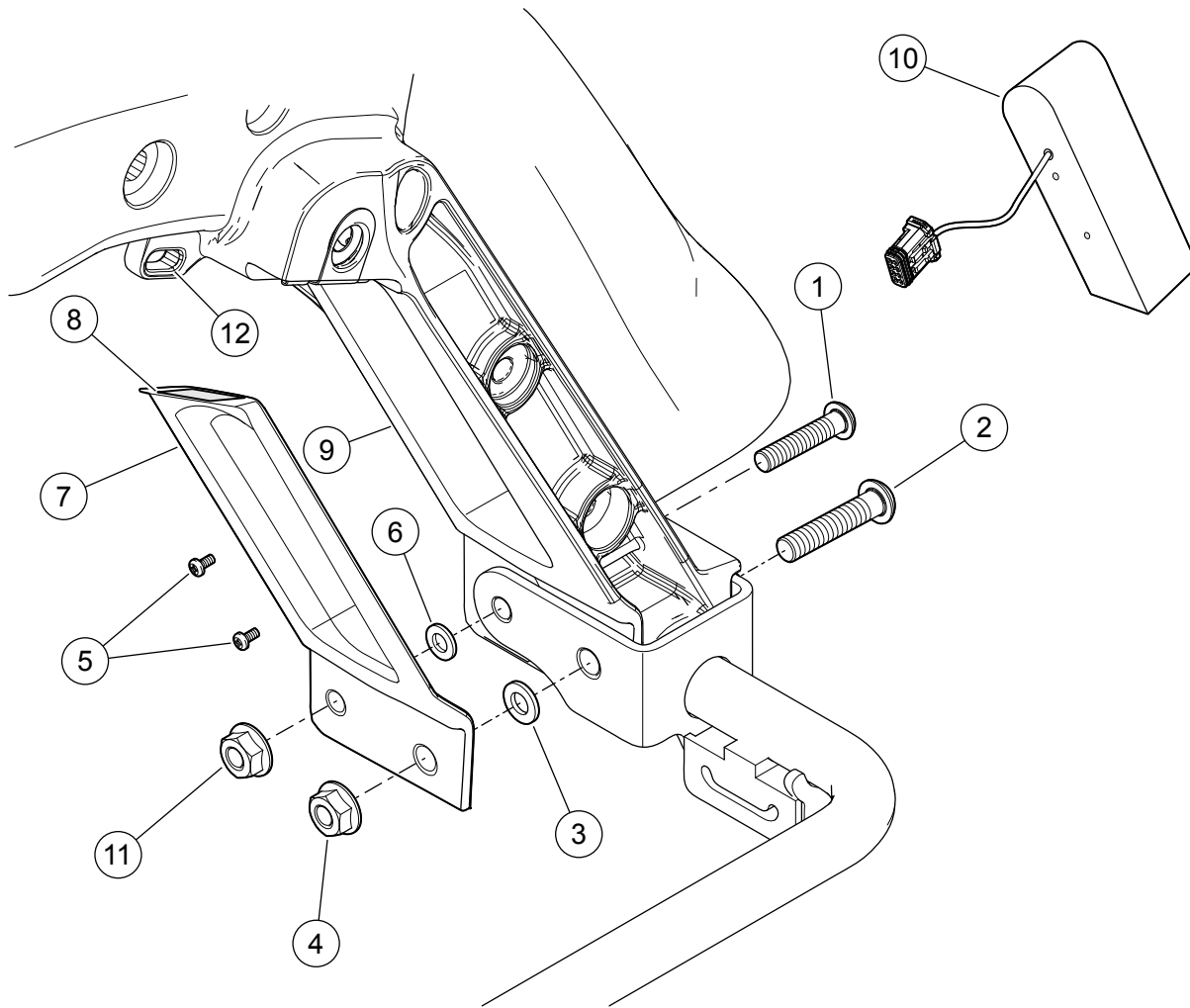
See Figure 6 and Table 1.

INSTALLATION

1. See the service manual. Remove seat.
2. See the service manual. Remove main fuse.
3. See the service manual. Remove the right saddlebag.
4. See Figure 1. Remove nuts (4 and 11). Do not remove screws. Screws are an aid in locating the backing plate.
5. With the adhesive backing still in place, test fit the Run/Brake/Turn Auxiliary Light.

NOTE

The surface where the tape is applied must be cleaned. Failure to clean this area results in a faulty installation.



- | | |
|-----------------------------|------------------|
| 1. Screw, Torx, 5/16 x 1 | 7. Bracket |
| 2. Screw, Torx, 3/8 x 2-1/2 | 8. Adhesive tape |
| 3. Washer, large | 9. Casting |
| 4. Nut, 3/8 | 10. LED Light |
| 5. Screw (2) | 11. Nut, 5/16 |
| 6. Washer, small | 12. Eyelet |

Figure 1. Run/Brake/Turn Auxiliary Lights

6. Clean the area on casting (9) where the tape is installed with a mixture of equal parts of isopropyl alcohol and distilled water. Allow to dry completely.
7. Install crush washers (3 and 6) onto screws.
- NOTE**
- Washers must be installed. Failure to install the washers result in a crack in the backing plate.*
8. Remove the adhesive tape backing (8).
9. Position backing plate over screws. Washers are designed to fit into the holes of backing plate.
10. Apply firm sliding pressure in tape areas.
11. Install nut (4) on screw (2). Verify that washers are in the holes of backing plate. Tighten.
Torque: 40.7–50.2 N·m (30–37 ft-lbs) *Nut*
12. Install nut (11) on screw (1). Tighten.
Torque: 20.3–27.1 N·m (15–20 ft-lbs) *Nut*
- NOTE**
- Use caution when tightening screw. Over tightening screws will crack the LED light.*
13. Install LED light (10). Secure with screws (5). Tighten.
Torque: 0.9 N·m (8 **in-lbs**) *Screws*
14. Repeat previous steps on the left side.

15. See Figure 2. Disconnect Original Equipment (OE) harness connector (1). Connect the 6-way connectors of the harness kit between the disconnected OE connectors (1).

NOTE

Sharp bends in the wire harness can stress splices and wires resulting in broken electrical connections. Extra care should be taken when flexing the area under the harness wrapping. Use the largest arcs possible when routing the harness.

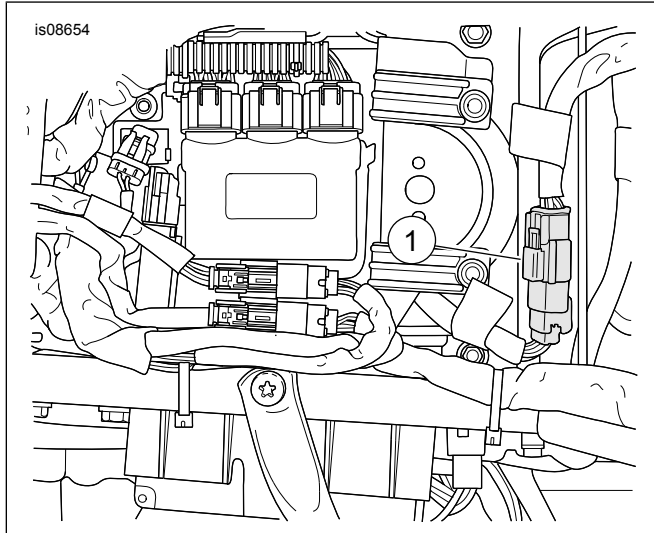
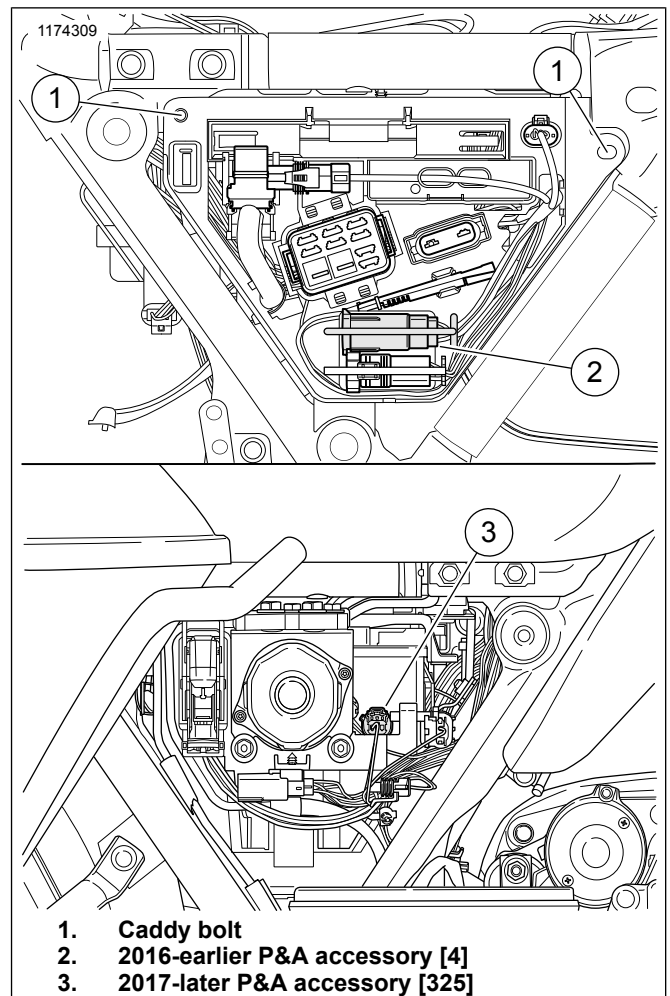


Figure 2. Run/Brake Light Connector [7A]

16. See Figure 3. Remove plug adapter harness (69201900).

For model years 2016-earlier: Remove the two bolts securing the side cover caddy containing [4A]. Run the 3-way connector between the gap in the tube frame and caddy. Reinstall the caddy. Verify the wires are not pinched. Reconnect plug adapter harness (69201900). Mate the 8-way connector to [4A] under the side cover.

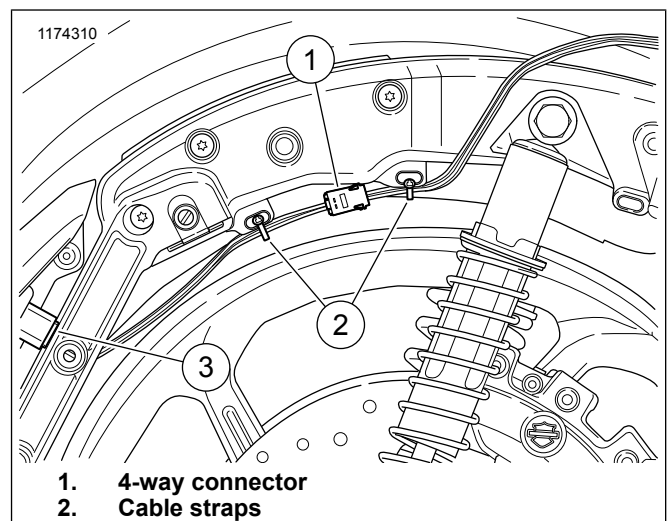
For model years 2017-later: Route the wire under the motorcycle's tube frame to the caddy containing [325B]. Mate the 3-way connector to [325B] under the side cover. Install retainer clip provided onto kit harness 3-way connector. Install the 3-way kit harness connector by replacing C325 connector cap.



1. Caddy bolt
2. 2016-earlier P&A accessory [4]
3. 2017-later P&A accessory [325]

Figure 3. P&A Accessory Connector Location

17. See Figure 4. Connect the kit harness 4-way connectors to the lamps. The right side kit connector contains blue with brown stripe in cavity 2. The left side kit connector contains blue with violet stripe in cavity 2. Test lights for correct operation.



1. 4-way connector
2. Cable straps

Figure 4. Secure Harness

18. Starting at the light, route the wire along the casting. Hold the harness to the casting so there is no slack. Secure with cable ties provided using the casting's tie points.
19. See Figure 5. Clean the area on rear fender and harness relay where the anchors and tape will be installed with a mixture of equal parts of isopropyl alcohol and distilled water. Allow to dry completely. Cut adhesive tape provided to size and apply to one face of the harness relay. Secure the relay to the fender. Secure the harness with the cable ties provided.
20. See Figure 5. Secure the harness wires to the frame using the cable ties provided. Verify wires will not be pinched when reinstalling the seat.

NOTE

See Figure 5 for an example of 2017-later routing.

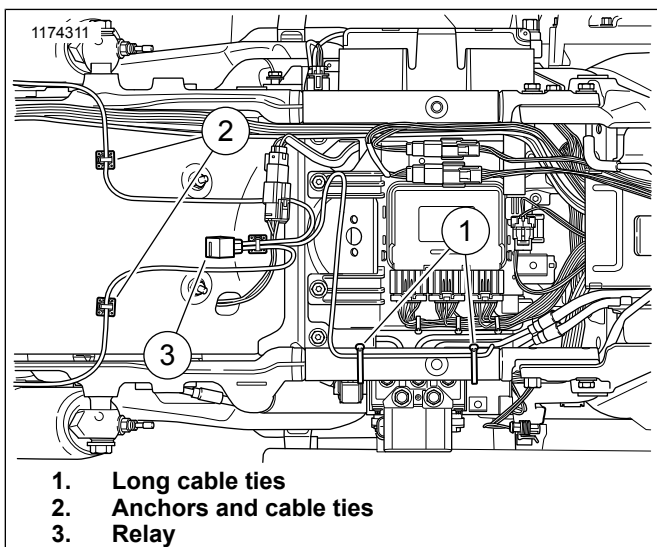


Figure 5. Under Seat

21. Repeat previous step for the other side.

NOTE

The relay must be fastened at an upward angle to prevent fluids from collecting in the terminals.

NOTE

Insure clearance to the harness will be maintained when the seat is reinstalled.

22. See the service manual. Install seat. After installing seat, pull up on the seat to verify that it is secure.

▲ WARNING

After installing seat, pull upward on seat to be sure it is locked in position. While riding, a loose seat can shift causing loss of control, which could result in death or serious injury. (00070b)

23. Test the rear stop, tail, turn and hazard lighting functions.
24. See Figure 1. One month after install, verify screws (5) are tight.

SERVICE PARTS

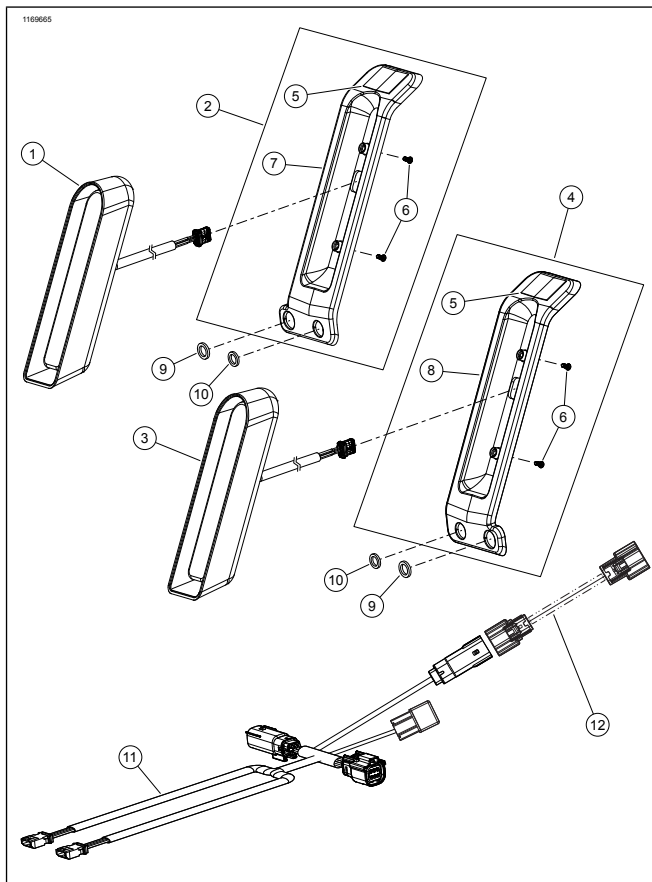


Figure 6. Service Parts: Run/Brake/Auxilliary Light Kit

Table 1. Service Parts

Item	Description (Quantity)	Part Number
1	LED light, LH	67800591
2	Backing plate kit, LH (includes items 5, 6, 7)	Not sold separately
3	LED light, RH	67800590
4	Backing plate kit, RH (includes items 5, 6, 8)	Not sold separately
5	Tape, two sided	11100178
6	Screws (2)	Not sold separately
7	Backing plate, LH	Not sold separately
8	Backing plate, RH	Not sold separately
9	Washer, crush, large	10600047
10	Washer, crush, small	10600046
11	Wire harness	69202276
12	Wire harness	Not sold separately