



INSTRUCTIONS

J06677

2018-04-13



HAND LEVER KIT

GENERAL

Kit Numbers

41700423A

Models

For model fitment information, see the P&A Retail Catalog or the Parts and Accessories section of www.harley-davidson.com (English only).

⚠ WARNING

Rider and passenger safety depend upon the correct installation of this kit. Use the appropriate service manual procedures. If the procedure is not within your capabilities or you do not have the correct tools, have a Harley-Davidson dealer perform the installation. Improper installation of this kit could result in death or serious injury. (00333b)

NOTE

This instruction sheet references service manual information. A service manual for this year/model motorcycle is required for this installation. One is available from a Harley-Davidson dealer.

Kit Contents

See Figure 2 and Table 1.

BRAKE LEVER INSTALLATION

1. See the Figure 2 and the FRONT BRAKE MASTER CYLINDER section of the service manual. Remove the retaining ring (4) from the groove in the pivot pin and discard retaining ring.
2. Remove the pivot pin and discard along with the original equipment brake lever and pivot lever bushing.

NOTE

New levers come with the pivot lever bushing installed.

Follow the instructions in Steps 3 and 4 carefully in order to prevent the actuating tab on the brake lever from damaging the rubber boot and plunger of the front stoplight switch.

3. Gently press and hold the piston cap (A) forward with a screwdriver. Slip the brake lever into position and align the pivot pin holes.
4. Install the pivot pin and new retaining ring (4) from kit.
5. Check the front brake for proper operation. There should be no free play in the hand lever. A slight preload is permissible.

⚠ WARNING

Be sure the master cylinder relief port is not plugged. A plugged relief port can cause brake drag or lockup and loss of vehicle control, which could result in death or serious injury. (00317a)

⚠ WARNING

Contact with DOT 4 brake fluid can have serious health effects. Failure to wear proper skin and eye protection could result in death or serious injury.

- If inhaled: Keep calm, remove to fresh air, seek medical attention.
- If on skin: Remove contaminated clothing. Rinse skin immediately with plenty of water for 15-20 minutes. If irritation develops, seek medical attention.
- If in eyes: Wash affected eyes for at least 15 minutes under running water with eye lids held open. If irritation develops, seek medical attention.
- If swallowed: Rinse mouth and then drink plenty of water. Do not induce vomiting. Contact Poison Control. Immediate medical attention required.
- See Safety Data Sheet (SDS) for more details available at sds.harley-davidson.com

(00240e)

NOTICE

DOT 4 brake fluid will damage painted and body panel surfaces it comes in contact with. Always use caution and protect surfaces from spills whenever brake work is performed. Failure to comply can result in cosmetic damage. (00239c)

6. Verify proper operation of the master cylinder relief port.
 - a. Position motorcycle and handlebar so master cylinder is level (on some vehicles handlebar configurations the use of a flat jack may help position the vehicle).
 - b. Remove the reservoir cover.
 - c. Slowly actuate the brake lever while watching the surface of the brake fluid. A slight spurt of fluid will break the surface if internal components are working properly.
 - d. Install the reservoir cover. See the service manual for proper torque specification.



▲ WARNING

Be sure that all lights and switches operate properly before operating motorcycle. Low visibility of rider can result in death or serious injury. (00316a)

7. Check that the stop light goes on when the brake lever is actuated.

CLUTCH LEVER INSTALLATION

See the CLUTCH CONTROL section of the appropriate Service Manual for all clutch lever removal, installation and adjustment procedures.

CLUTCH LEVER INSPECTION

See See Figure 1. After removing clutch lever, look at the cap of the clutch switch cap. If the cap is black, replace the clutch switch. The updated clutch switch has a gray cap.

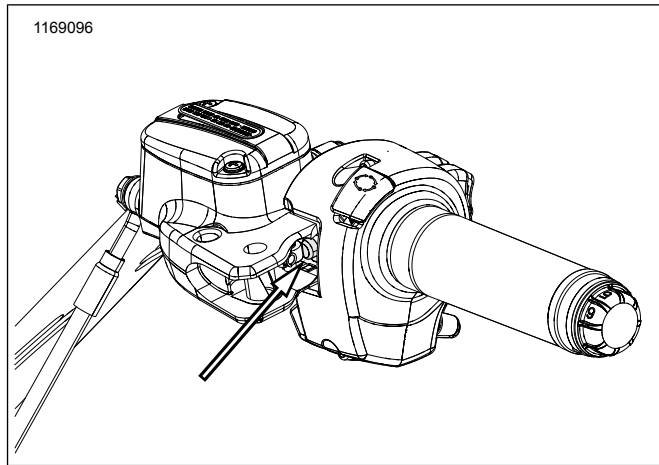


Figure 1. Clutch Switch Cap

COMPLETE

1. Check the clutch lever for proper operation. There should be no free play in the hand lever. The lever should actuate fully. A slight preload is permissible.

▲ WARNING

After repairing the brake system, test brakes at low speed. If brakes are not operating properly, testing at high speeds can cause loss of control, which could result in death or serious injury. (00289a)

2. Test ride the motorcycle at low speed.

SERVICE PARTS

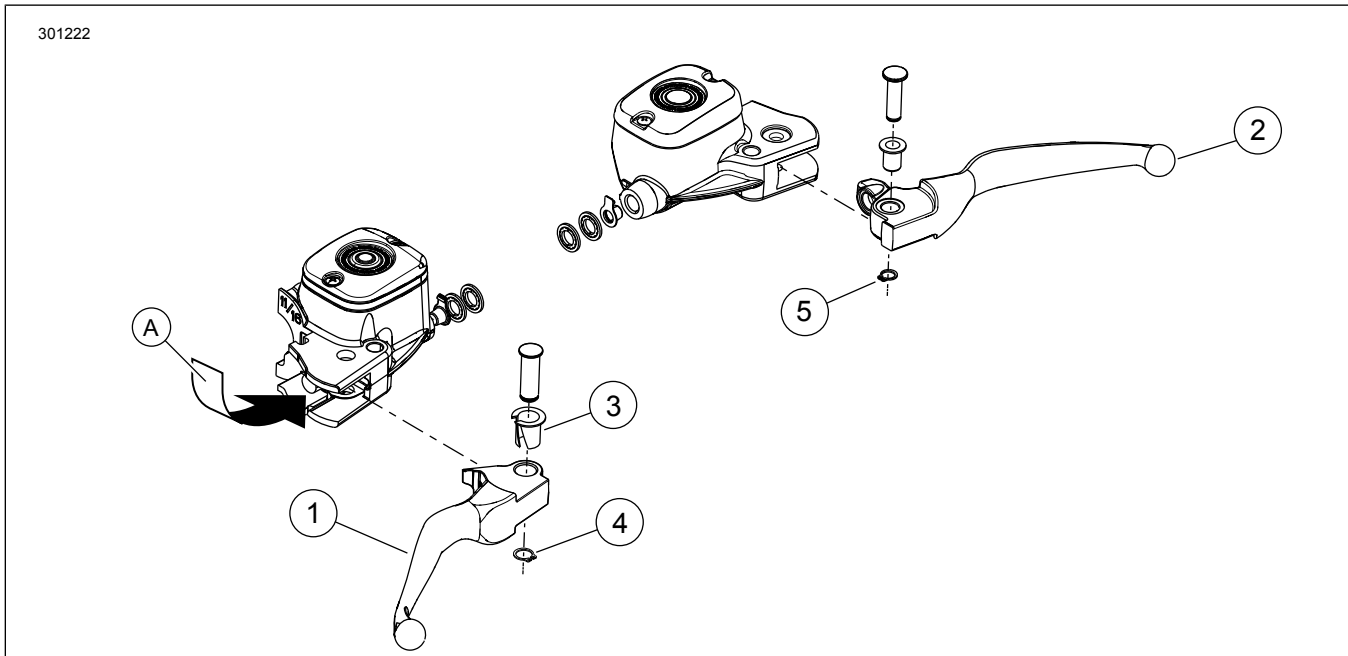


Figure 2. Service Parts: Hand Lever Kit

Table 1. Service Parts Table

Kit	Item	Description (Quantity)	Part Number
Kit 41700423A	1	Brake lever, chrome	Not sold separately
	2	Clutch lever, chrome	Not sold separately
	3	Bushing, pressed into brake lever	45423-96
	4	Retaining ring	11143
	5	Retaining ring	11615
Items mentioned in text, but not included in kit:			
	A	Press piston cap forward	