



INSTRUCTIONS

J06513

2018-08-21



RIDER & PASSENGER FOOTPEG KIT

GENERAL

Kit Number

Rider: 50500870, 50500871, 50500873, 50500874

Passenger: 50500992, 50500993

Trims: 50500937, 50500938, 50500939, 50500940

Models

For model fitment information, see the P&A Retail Catalog or the Parts and Accessories section of www.harley-davidson.com (English only).

Installation Requirements

⚠ WARNING

Rider and passenger safety depend upon the correct installation of this kit. Use the appropriate service manual procedures. If the procedure is not within your capabilities or you do not have the correct tools, have a Harley-Davidson dealer perform the installation. Improper installation of this kit could result in death or serious injury. (00333b)

NOTE

This instruction sheet references service manual information. A service manual for your model motorcycle is required for this installation and is available from a Harley-Davidson Dealer.

Kit Contents

See Figure 4 and Table 1.

INSTALLATION

RIDER

NOTE

On 50500871, 50500874: For Installation on FXBR/S, Remove the long wear peg labeled FXBB, FXLR, FLSB and install the wear peg labeled FXBR.

1. See Figure 2. Your model motorcycle is equipped with a pin (4) and retaining clip (2), remove them and retain for future use. Save all hardware, including torsion spring (1), for installation of the new footpegs (3).

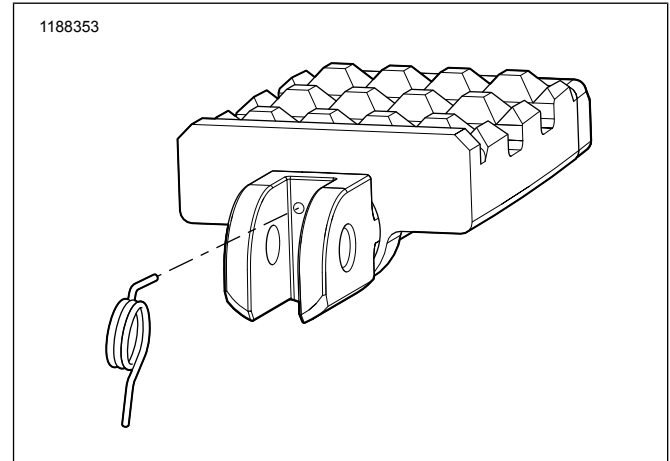


Figure 1. Torsion Spring

2. See Figure 2. Insert short leg of torsion spring (1) into hole in new footpeg (3). Align long leg of torsion spring (1) to hole in footpeg mount and insert. Rotate footpeg (3) into position in clevis and insert pin (4) through clevis, footpeg (3) and spring (1). Install retaining clip (2). Repeat on other side.

NOTE

See Figure 1. When performing the next step, verify that the spring is positioned inside of the footpeg.

3. See Figure 2. Adjust orientation as follows:
 - a. For forward controls, foot surface to be parallel to the mounting pin.
 - b. For mid controls, foot surface to be parallel to ground.
 - c. Tighten adjustment screw (5).
Torque: 28.5 N·m (21 ft·lbs)

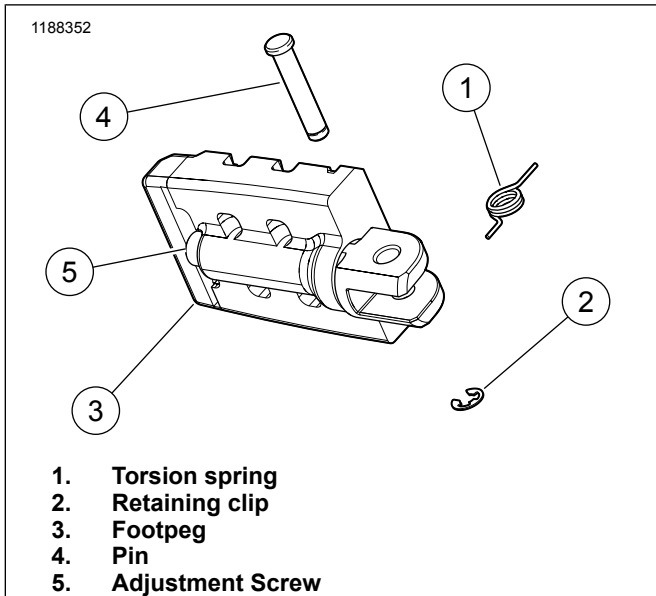


Figure 2. Rider Footpeg Torsion Spring Installation

PASSENGER

1. See Figure 3. Your model motorcycle is equipped with a pin (1) and retaining clip (5). Remove them and retain for future use. Save all hardware, including detent spring (3), detent ball (4) and cage (6) for installation of the new footpegs (2).

2. Insert detent spring (3) into new footpeg (2), followed by detent ball (4). Position cage (6) on footpeg clevis edge while capturing the detent ball (4) and detent spring (3) inside cage (6) while sliding cage (6) onto footpeg clevis.

NOTE

See Figure 3. When performing the next step, verify that the spring (3) is positioned inside of the footpeg (2).

3. Align cage (6) and footpeg (2) with footpeg mount on vehicle.
4. Install pin (1) and retaining clip (5).
5. See Figure 3. Adjust orientation as follows:
 - a. Rotate to desired orientation.

- b. Fold peg up to stowed position and confirm clearance to other components. Adjust as necessary.
- c. Tighten adjustment screw (7).
Torque: 28.5 N·m (21 ft-lbs)

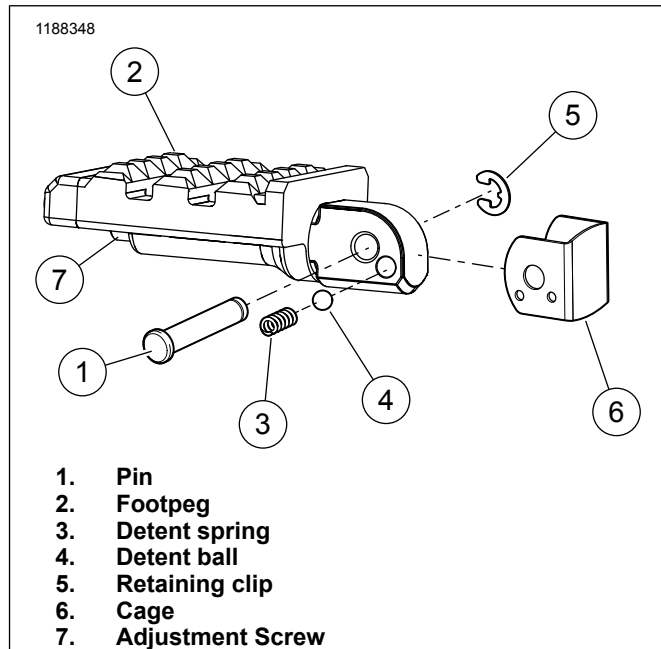


Figure 3. Passenger Footpeg Detent Ball Installation

▲ WARNING

Footrests must fold up and toward rear of motorcycle if struck. Failure to set footrests to fold up and back could result in death or serious injury. (00366a)

REPLACE TRIM or WEAR PEG

1. See Figure 4. Remove two screws (8).
2. Replace trim or wear peg (if applicable).
3. Apply threadlocker to the screws (8) and install screws (8). Tighten.
Torque: 1.69–2.26 N·m (15–20 in-lbs)
Consumable: LOCTITE 243 MEDIUM STRENGTH THREADLOCKER AND SEALANT (BLUE) (99642-97)

SERVICE PARTS

1178010

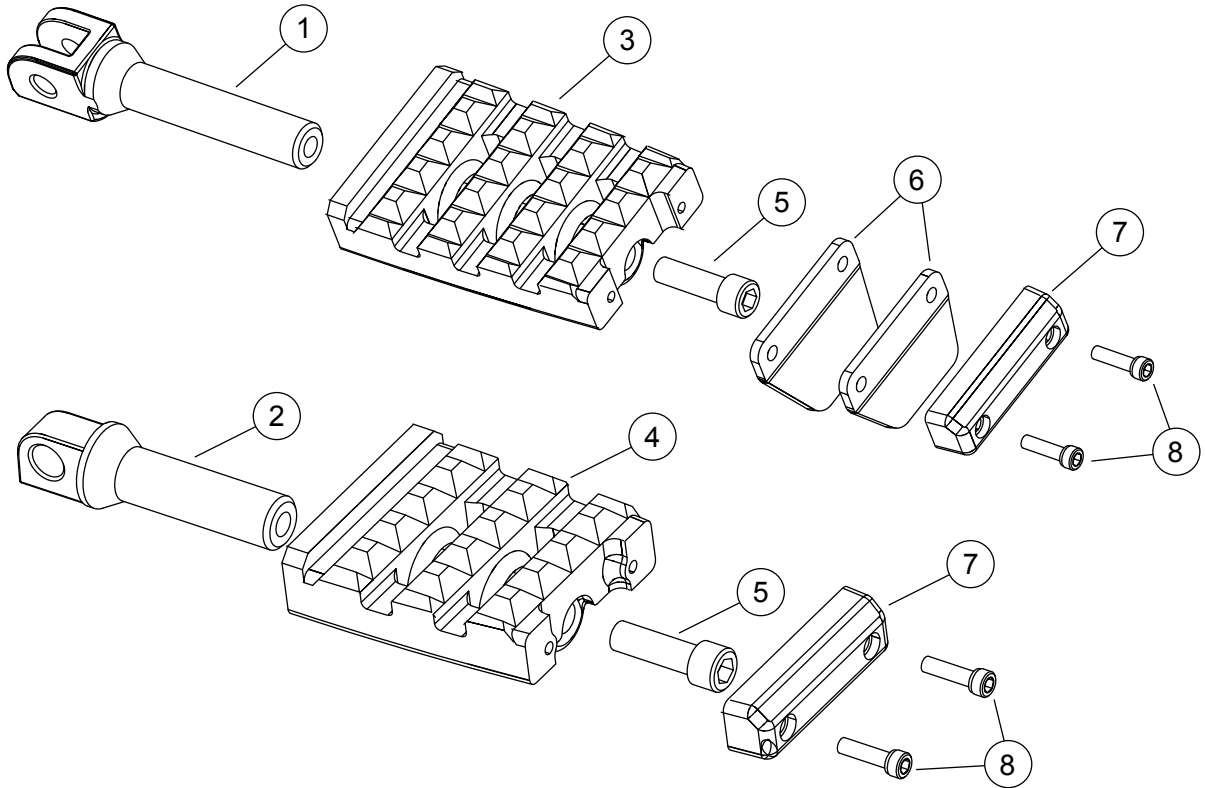


Figure 4. Service Parts: Footpeg Kit and Insert

Table 1. Service Parts: Footpeg Kit and Insert

Kit	Item	Description (Quantity)	Part Number
50500870 50500871 50500873 50500874	1	Rider footpeg clevis, (2)	50501014
		Rider footpeg clevis, short (2)	50501112
	3	Rider footpeg assembly, black (2)	50500891, 50501082
		Rider footpeg assembly, bronze (2)	50500896, 50501084
	5	Footpeg attachment screw (2)	2708A
	6	Footpeg wear peg, black (2)	50500892
Footpeg wear peg, short (2)		50501108	
50500992 50500993	8	Stainless steel screw (4)	10200662
	2	Passenger footpeg clevis, short (2)	50501121
		4	Passenger footpeg assembly short, black (2)
	4	Passenger footpeg assembly short, bronze (2)	50501120
5	Footpeg attachment screw (2)	2708A	
8	Stainless steel screw (4)	10200662	
All Kits	7	Insert, footpeg, black	50500937
		Insert, footpeg, bronze	50500938
		Insert, footpeg, orange	50500939
		Insert, footpeg, aluminum	50500940