



# INSTRUCTIONS

J06559

2018-07-27



## SCREAMIN' EAGLE PERFORMANCE AIR CLEANER KIT

### GENERAL

#### Kit Numbers

29400357

#### Models

For model fitment information, see the P&A retail catalog or the Parts and Accessories section of [www.harley-davidson.com](http://www.harley-davidson.com) (English only).

#### NOTE

*These kits are intended for High Performance applications only. Engine-related performance parts are intended FOR THE EXPERIENCED RIDER ONLY.*

### Installation Requirements

LOCTITE 243 MEDIUM STRENGTH THREADLOCKER AND SEALANT (BLUE) (99642-97) is required for proper installation of this kit.

#### ⚠ WARNING

**Rider and passenger safety depend upon the correct installation of this kit. Use the appropriate service manual procedures. If the procedure is not within your capabilities or you do not have the correct tools, have a Harley-Davidson dealer perform the installation. Improper installation of this kit could result in death or serious injury. (00333b)**

#### NOTE

*This instruction sheet references service manual information. A service manual for this year/model motorcycle is required for this installation. One is available from a Harley-Davidson dealer.*

#### NOTICE

**You must recalibrate the ECM when installing this kit. Failure to properly recalibrate the ECM can result in severe engine damage. (00399b)**

See a Harley-Davidson dealer for Electronic Control Module (ECM) calibration.

### Kit Contents

See Figure 3 and Table 1.

### INSTALLATION

#### ⚠ WARNING

**Disconnect negative (-) battery cable first. If positive (+) cable should contact ground with negative (-) cable connected, the resulting sparks can cause a battery explosion, which could result in death or serious injury. (00049a)**

1. Refer to the service manual. Remove seat. Disconnect both battery cables, negative battery cable first. Save all seat mounting hardware.

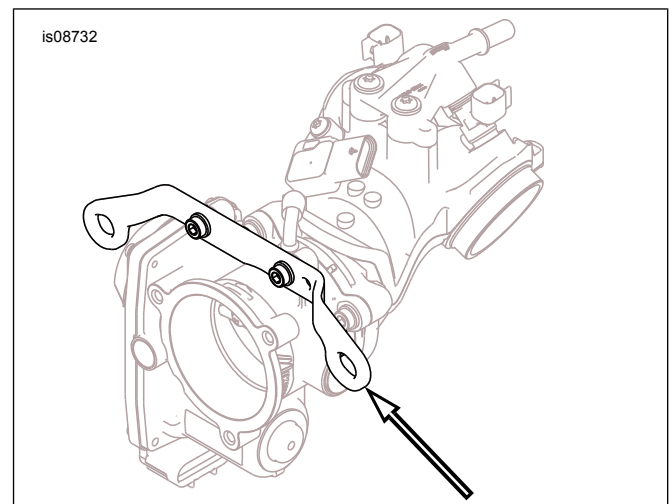
#### ⚠ WARNING

**When servicing the fuel system, do not smoke or allow open flame or sparks in the vicinity. Gasoline is extremely flammable and highly explosive, which could result in death or serious injury. (00330a)**

### Original Equipment (OE) Air Cleaner Removal

Have a Harley-Davidson dealer recalibrate the ECM before air cleaner installation.

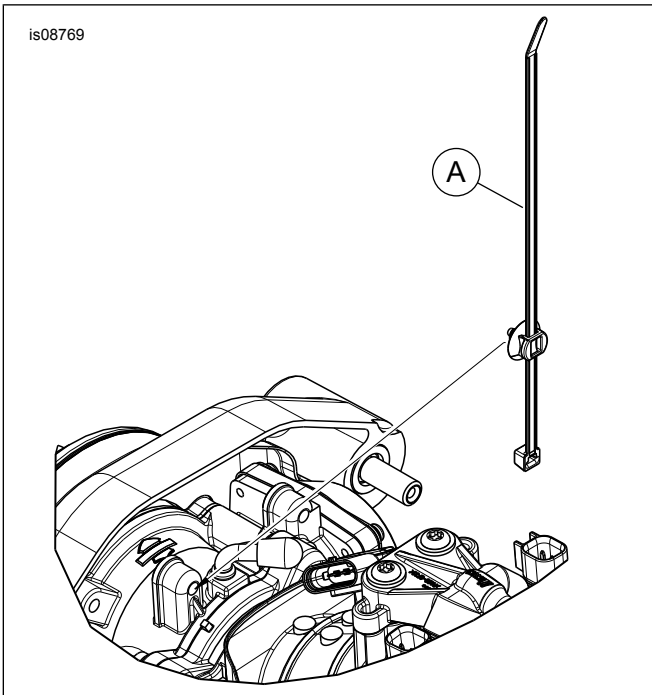
1. Remove the air cleaner backplate. See service manual.
2. See Figure 1. Remove and discard the induction module support bracket.



**Figure 1. Remove Induction Module Support Bracket**

3. See Figure 2. Secure throttle control wire to throttle body with supplied cable strap (A).





**Figure 2. Cable Strap**

## Air Cleaner Installation

### NOTE

When servicing the air cleaner, apply **LOCTITE 243 MEDIUM STRENGTH THREADLOCKER AND SEALANT (BLUE)** (99642-97) to all threaded fasteners (both male and female threads).

1. Install throttle body cover (8) to back plate (10) with self-tapping screws (6).
2. Remove the backing from the adhesive side of the induction module backplate gasket (9). Align the holes. Install the gasket to the backplate (10).
3. Install the O-rings (5) in the counterbore around the breather screw holes on the induction module side of the backplate.
4. Align the holes in the induction module with the holes in the backplate.
5. Apply a small amount of threadlocker to the backplate mounting screw (13) threads. Insert the screws through the backplate and into the induction module until the screw threads are engaged. **DO NOT** tighten now.
6. Apply threadlocker to breather screws and mating threads in cylinder head.
7. Insert the breather screws (11) through the backplate.
8. Alternately tighten the two breather screws. Tighten.  
Torque: 29.8–32.5 N·m (22–24 ft-lbs)
9. Tighten the three backplate mounting screws. Tighten.  
Torque: 6.2–6.8 N·m (55–60 in-lbs)

10. Assemble breather tubes (4, 12) to breather screw nipples (apply oil to screw mating tip) and align in back plate slots and ribs on backplate.

11. If removing the Original Equipment (OE) intake you must apply the provided Warning Label in a clearly visible area. We suggest attaching the sticker to the following:

- a. **Touring/Trike:** Right side battery cover or inner primary.
- b. **Softail:** Right side steer head casting.

## Air Filter Element Installation

### NOTE

This air filter is **PRE-OILED** and ready to install.

1. Apply threadlocker to the threads of the filter mounting bracket screws (3).
2. Position the air filter element mounting bracket (14) onto the backplate (10), install bracket screws (3). Tighten.  
Torque: 6.2–6.8 N·m (55–60 in-lbs)
3. Apply threadlocker to air filter element mounting screw (1).
4. Assemble air filter element and install screw. Tighten.  
Torque: 4.1–6.8 N·m (36–60 in-lbs)

### ⚠ WARNING

**Connect positive (+) battery cable first. If positive (+) cable should contact ground with negative (-) cable connected, the resulting sparks can cause a battery explosion, which could result in death or serious injury. (00068a)**

5. See the service manual to connect the battery cables, positive cable first.
6. See the service manual. Install seat. After installing seat, pull up on the seat to verify that it is secure.

## Air Filter Element Maintenance

1. Inspect the air filter element every:  
8,000 km (5,000 mi)
  - a. Inspect more often under dusty conditions.

### 2. NOTE

\* The use of cleaning, drying or oiling methods or products other than those shown, damages the filter and can void the manufacturer's warranty.

\* **K&N® Air Filter Cleaner** is available from a Harley-Davidson dealer, either alone [0.95L (1 qt) sprayer bottle, Part No. 99883-88T] or as a 0.35L (12 fl oz) sprayer bottle as part of the Filter Care Service Kit (Part No. 99850-92T).

\* **K&N Air Filter Oil** is also available from a Harley-Davidson dealer, either alone [347 g (12.25 oz) aerosol can, Part No.

99882-88T] or as a 184 g (6.5 oz) aerosol can as part of the Filter Care Service Kit.

**\* DO NOT OVER-OIL THE AIR FILTER.** Over-oiling can interfere with the proper performance of the engine and/or certain engine components. If oil is still draining or dripping from the filter media 20 minutes after oiling, clean and oil the filter element again.

To clean the element:

- Tap the element to dislodge any loose dirt. Gently brush with a soft bristle brush.
- Spray air filter cleaner liberally onto the cotton filter media and let soak for ten minutes, OR roll or soak the cotton filter media in a shallow pan of air filter cleaner. Remove immediately, and let soak for ten minutes.

- Rinse off the filter media (flowing from the **clean** side to the dirty side), with low-pressure tap water.
- After rinsing, shake off all excess water, and let the filter media air dry. DO NOT use compressed air or a heat gun to speed drying.
- After the filter media is **completely** dry, EITHER carefully use a squeeze bottle to deposit air filter oil along each pleat, once only, OR spray oil along each pleat, once only, holding the spray nozzle away from the media approximately:

76 mm (3 in)

- Let the oil absorb into the filter media for 20 minutes before proceeding.** After 20 minutes, inspect the filter media. Carefully apply oil to any remaining visible white spots on the filter media. Allow oil to absorb.

## SERVICE PARTS

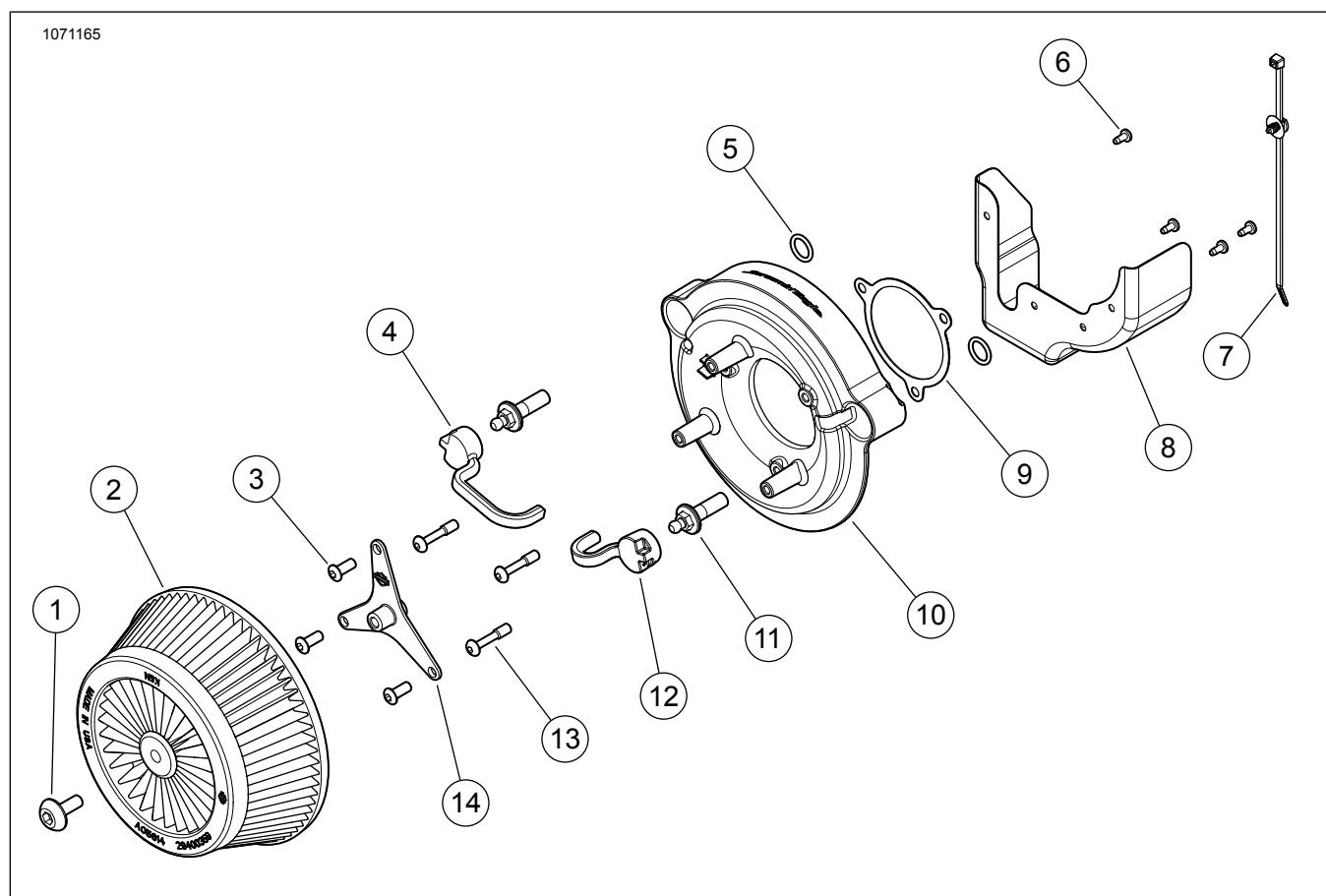


Figure 3. Service Parts: Screamin' Eagle Performance Air Cleaner Kit

Table 1. Service Parts

Item	Description (Quantity)	Part Number
1	Screw, button head	10200591
2	Filter element	29400359
3	Button head screw (3)	926
4	Rear breather hose	29400361
5	O-ring (2)	11292
6	Screw, self tapping (4)	68042-99
7	Tie strap	12500015
8	Throttle body cover, Black	61300844

**Table 1. Service Parts**

<b>Item</b>	<b>Description (Quantity)</b>	<b>Part Number</b>
9	Gasket	29000149
10	Air box base plate, Black	Not Sold Separately
11	Breather bolt (2)	29465-99
12	Front breather hose	29400360
13	Screw, button head (3)	869
14	Air filter mounting bracket	60900074