



INSTRUCTIONS

J05636

2018-07-27



SCREAMIN' EAGLE PERFORMANCE AIR CLEANER KIT - BURST COLLECTION

GENERAL

Kit Number

29000066

Models

For model fitment information, see the P&A Retail Catalog or the Parts and Accessories section of www.harley-davidson.com (English only).

This kit fits 50 mm electronic throttle control induction modules.

NOTE

These kits are intended for High Performance applications only. Engine-related performance parts are intended FOR THE EXPERIENCED RIDER ONLY.

Additional Parts Required

LOCTITE 243 MEDIUM STRENGTH THREADLOCKER AND SEALANT (BLUE) (99642-97) is needed for proper installation of this kit and is available from a Harley-Davidson dealer.

Proper installation of this kit requires breather screws (Part No. 29465-08), which are Original Equipment (OE) equipped on 2008 and later Touring models. If the motorcycle is not equipped with these breather screws, separate purchase is required.

⚠ WARNING

Rider and passenger safety depend upon the correct installation of this kit. Use the appropriate service manual procedures. If the procedure is not within your capabilities or you do not have the correct tools, have a Harley-Davidson dealer perform the installation. Improper installation of this kit could result in death or serious injury. (00333b)

NOTICE

You must recalibrate the ECM when installing this kit. Failure to properly recalibrate the ECM can result in severe engine damage. (00399b)

NOTE

Download the **new** Electronic Control Module (ECM) calibration using the Digital Technician™ at a Harley-Davidson dealer.

Kit Contents

See Figure 3 and Table 1.

NOTE

Installation of this kit by an authorized Harley-Davidson dealer will not impact your limited vehicle warranty.

The Product Information Label contained in this kit is a requirement of the California Air Resource Board (CARB) emission regulation.

Place the label on the right side of the frame directly beneath the VIN sticker. This label is not required outside the state of California.

This conversion kit is intended for High Performance applications only. This engine related performance part is legal for sale or use in California on pollution controlled motor vehicles.

INSTALLATION

⚠ WARNING

Disconnect negative (-) battery cable first. If positive (+) cable should contact ground with negative (-) cable connected, the resulting sparks can cause a battery explosion, which could result in death or serious injury. (00049a)

1. Refer to the service manual and follow the instructions given to remove the seat and disconnect the battery cables, negative (-) cable first. Save all seat mounting hardware.

⚠ WARNING

When servicing the fuel system, do not smoke or allow open flame or sparks in the vicinity. Gasoline is extremely flammable and highly explosive, which could result in death or serious injury. (00330a)

Original Equipment (OE) Air Cleaner Removal

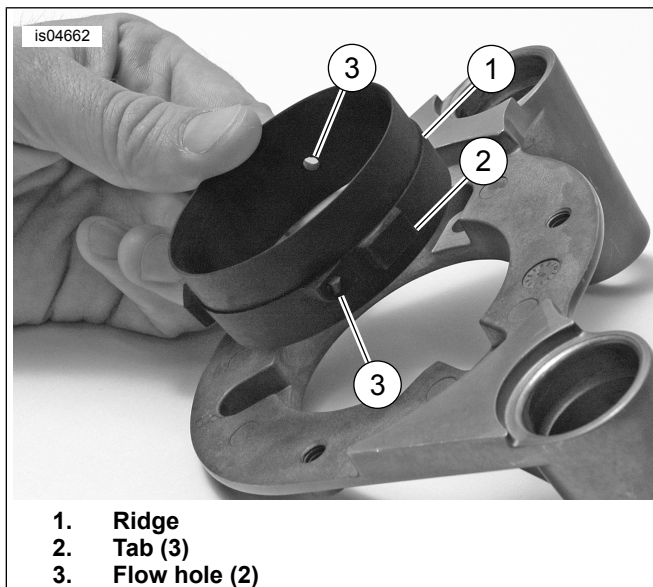


Figure 1. 50 mm Adapter

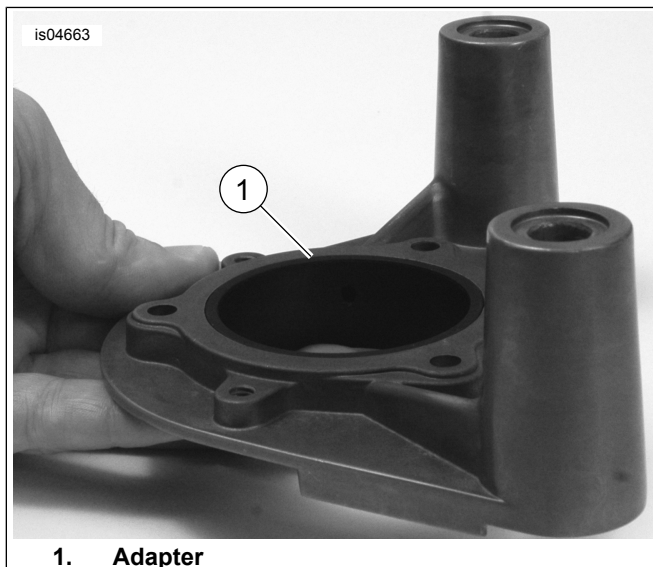


Figure 2. Adapter Positioned Correctly in Backplate

1. Have a Harley-Davidson dealer recalibrate the ECM prior to air cleaner installation.
2. Remove the air cleaner backplate following the instructions in the service manual. Retain the two breather screws (A) removed from the backplate (see Figure 3). The remaining parts can be discarded.
3. See Figure 3. Remove and discard induction module bracket (B).

Air Cleaner Installation

NOTE

When servicing the air cleaner, apply **LOCTITE 243 MEDIUM STRENGTH THREADLOCKER AND SEALANT (BLUE)** (99642-97) to all threaded fasteners (both male and female threads).

1. Align the holes and install the gasket (15) on the backplate.

2. See Figure 3. Install the **new** O-rings (1) in the grooves around the breather screw holes on the induction module side of the backplate (2).
3. Align the holes in the induction module cover with the holes in the backplate.
4. Apply a small amount of threadlocker (purchased separately) to the backplate mounting screw (5) threads. Insert the screws through the backplate and induction module cover then install the screws into the induction module until the screw threads are engaged. **DO NOT** tighten completely at this time.
Consumable: **LOCTITE 243 MEDIUM STRENGTH THREADLOCKER AND SEALANT (BLUE)** (99642-97)
5. Insert the breather screws (removed in Step 2 or purchased separately) through the backplate. Apply a liberal amount of threadlocker to the breather screw threads and the mating tapped holes in the cylinder head, then install the screws into the cylinder head. **DO NOT** tighten completely at this time.
6. Alternately secure the two breather screws. Tighten.
Torque: 29.8–32.5 N·m (22–24 ft-lbs) screw
7. Lubricate the O-rings (3) with clean engine oil or white lithium grease. Install the O-rings onto the breather plugs. Press the breather plugs into the breather screw cavities.
8. Secure the three backplate mounting screws (5). Tighten.
Torque: 6.2–6.8 N·m (55–60 in-lbs) screw
9. **For models equipped with 50 mm induction module:** See Figure 1. The outside of the outer half of the plastic adapter (item 6 in Figure 3) is marked "This side out - 50 mm only." The inner half is indexed with three tabs (2) and two breather flow holes (3). Insert the indexed side into the backplate, aligning the tabs and flow holes with the flow holes in the backplate. Check that the adapter is fully seated and oriented correctly with the markings visible. See Figure 2. When installed correctly, the adapter is flush on the induction module side of the backplate.
10. See Figure 3. Place the gasket (7) against the opposite side of the flange.
11. Align the holes in the gasket with the cover adapter (8).
12. Apply a small amount of threadlocker to the threads of the three flat head screws (10).
13. Secure the cover adapter to the air cleaner backplate and tighten the screws. Tighten.
Torque: 6.2–6.8 N·m (55–60 in-lbs) adapter screws
14. Insert the faceplate (11) inside the cover (12) and place the filter element (9) against the faceplate.
15. While holding all three together, align to the cover adapter and secure with socket head screws (13). Tighten. For best appearance, align so the Bar & Shield logo is horizontal.
Torque: 6.2–6.8 N·m (55–60 in-lbs) screws

NOTE

Riding a motorcycle equipped with an exposed oiled air filter under rainy conditions IS NOT RECOMMENDED.

⚠ WARNING

Connect positive (+) battery cable first. If positive (+) cable should contact ground with negative (-) cable connected, the resulting sparks can cause a battery explosion, which could result in death or serious injury. (00068a)

⚠ WARNING

After installing seat, pull upward on seat to be sure it is locked in position. While riding, a loose seat can shift causing loss of control, which could result in death or serious injury. (00070b)

16. Refer to the service manual and follow the instructions given to connect the battery cables, positive (+) cable first, and install the seat.
17. If removing the OE intake you must apply the provided Warning Label in a clearly visible area. We suggest attaching the sticker to the following:
 - a. **Touring/Trike:** Inner primary topside, or side cover
 - b. **Softail:** Right side lower fender

Air Filter Element Maintenance

1. Inspect the air filter element every 8,000 Km (5,000 mi), or more often under dusty conditions.

NOTE

The use of cleaning, drying or oiling methods or products other than those shown will damage the filter and void the manufacturer's warranty.

K&N® Air Filter Cleaner is available from a Harley-Davidson dealer, either alone (1 qt./0.95 L sprayer bottle, 99883-88T) or a 12 fl oz/0.35 L sprayer bottle as part of the Filter Care Service Kit (99850-92T).

K&N Air Filter Oil is also available from a Harley-Davidson dealer, either alone (12.25 oz/ 347 gram aerosol can, 99882-88T) or a 6.5 oz/ 184 gram aerosol can as part of the Filter Care Service Kit.

DO NOT OVER-OIL THE AIR FILTER. Over-oiling may interfere with the proper performance of the engine and/or certain engine components. If oil is still draining or dripping from the filter media twenty minutes after oiling, clean and oil the filter element again.

2. To clean the element:

- a. Tap the element to dislodge any loose dirt, then gently brush with a soft bristle brush.
- b. Spray air filter cleaner liberally onto the cotton filter media and let soak for ten minutes, OR roll or soak the cotton filter media in a shallow pan of air filter cleaner. Remove immediately, and let soak for ten minutes.
- c. Rinse off the filter media (flowing from the **clean** side to the dirty side), with low-pressure tap water.
- d. After rinsing, shake off all excess water, and let the filter media air dry. DO NOT use compressed air or a heat gun to speed drying.
- e. After the filter media is **completely** dry, EITHER spray air filter oil along each pleat, once only, holding the spray nozzle approximately 3 inches (76 mm) away from the media, OR carefully use a squeeze bottle to deposit oil along each pleat, once only. **Let the oil absorb into the filter media for twenty minutes before proceeding.** After twenty minutes, inspect the filter media, and carefully apply oil to any remaining visible white spots on the filter media, and allow to absorb.

3. Install the air filter element, faceplate and cover onto the adapter. Tighten.

Torque: 6.2–6.8 N·m (55–60 **in-lbs**) *band clamp*

SERVICE PARTS

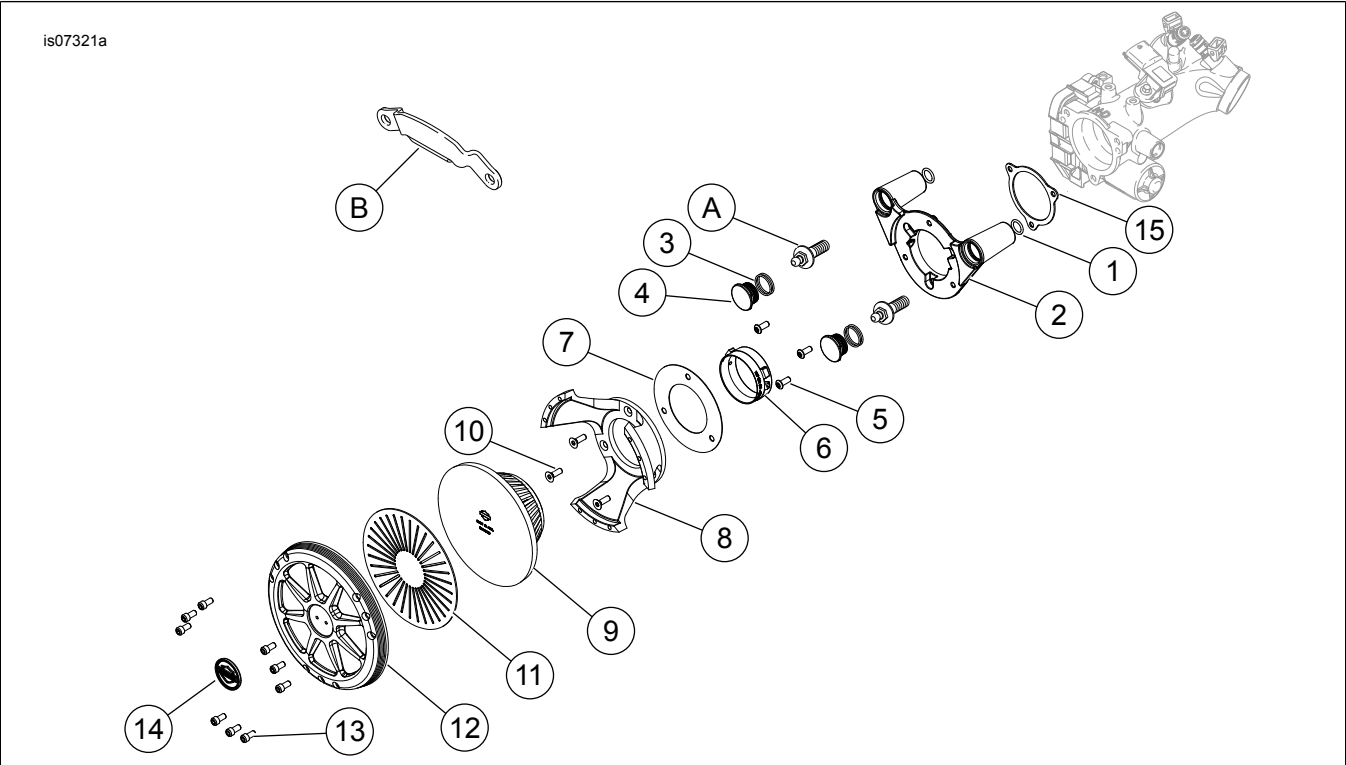


Figure 3. Service Parts: Screamin' Eagle Performance Air Cleaner Kit

Table 1. Service Parts Table

Item	Description (Quantity)	Part Number
1	O-ring (2)	11292
2	Backplate, machined, black	28887-09
3	O-ring, breather plug (4)	10925
4	Plug (2)	29830-05A
5	Screw, button head (3)	926
6	Adapter, 58 mm to 50 mm	29395-08A
7	Gasket	29780-08A
8	Air cleaner cover adapter	Not Sold Separately
9	Air filter element	29400109
10	Screw, flat head (3)	2986
11	Faceplate	61300195
12	Air cleaner cover	Not Sold Separately
13	Screw, socket head (9)	94310-91TS
14	Emblem	14100424
15	Gasket	29241-08
Items mentioned in text, but not included in kit:		
A	OE breather screw (2) - available for separate purchase	29465-08
B	Induction module bracket (remove and discard)	