



# INSTRUCTIONS

J04481

2018-07-27



## SCREAMIN' EAGLE "HEAVY BREATHER" PERFORMANCE AIR CLEANER KIT

### GENERAL

#### Kit Numbers

29299-08A, 29098-09A

#### Models

For model fitment information, see the P&A Retail Catalog or the Parts and Accessories section of [www.harley-davidson.com](http://www.harley-davidson.com) (English only).

#### NOTE

*These kits are intended for High Performance applications only. Engine-related performance parts are intended FOR THE EXPERIENCED RIDER ONLY.*

#### Additional Parts Required

LOCTITE 243 MEDIUM STRENGTH THREADLOCKER AND SEALANT (BLUE) (99642-97) is needed for proper installation of this kit. A 0.5 mL pack of Loctite 243 is included with this kit. A 6.0 mL tube (99642-97) is available from a Harley-Davidson dealer.

Air filter oil is also needed for proper installation of this kit. K&N® Air Filter Oil is available from a Harley-Davidson dealer, either alone (12.25 oz/347 gram aerosol can, 99882-88T) or in a 6.5 oz/184 gram aerosol can as part of the Filter Care Service Kit (99850-92T).

#### ⚠ WARNING

**Rider and passenger safety depend upon the correct installation of this kit. Use the appropriate service manual procedures. If the procedure is not within your capabilities or you do not have the correct tools, have a Harley-Davidson dealer perform the installation. Improper installation of this kit could result in death or serious injury. (00333b)**

#### NOTE

*This instruction sheet references service manual information. A service manual for your model motorcycle is required for this installation and is available from a Harley-Davidson dealer.*

*The following caution and note apply to EFI models only.*

#### NOTICE

**You must recalibrate the ECM when installing this kit. Failure to properly recalibrate the ECM can result in severe engine damage. (00399b)**

#### NOTE

*See a Harley-Davidson dealer for ECM (Electronic Control Module) calibration.*

### Kit Contents

See Figure 1 and Table 1.

### INSTALLATION

#### ⚠ WARNING

**To prevent accidental vehicle start-up, which could cause death or serious injury, disconnect battery cables (negative (-) cable first) before proceeding. (00307a)**

#### ⚠ WARNING

**Disconnect negative (-) battery cable first. If positive (+) cable should contact ground with negative (-) cable connected, the resulting sparks can cause a battery explosion, which could result in death or serious injury. (00049a)**

1. Refer to the service manual and follow the instructions given to remove the seat and disconnect the battery cables, negative (-) cable first. Retain all seat mounting hardware.

#### ⚠ WARNING

**When servicing the fuel system, do not smoke or allow open flame or sparks in the vicinity. Gasoline is extremely flammable and highly explosive, which could result in death or serious injury. (00330a)**

### Original Equipment (OE) Air Cleaner Removal

**For carbureted models:** Refer to the service manual and check the warm-slow idle speed adjustment before removing the OE air cleaner backplate.

**For EFI (fuel-injected) models:** Have a Harley-Davidson dealer recalibrate the ECM prior to air cleaner installation.

1. Remove the air cleaner backplate following the instructions in the service manual. Retain the two breather screws (A) removed from the backplate (see Figure 1 ). The remaining parts can be discarded.
2. See Figure 1. Remove and discard induction module bracket (B).

### "Heavy Breather" Air Cleaner Installation

#### NOTE

*When servicing the air cleaner, apply threadlocker to all threaded fasteners (both male and female threads). LOCTITE 243 MEDIUM STRENGTH THREADLOCKER AND SEALANT (BLUE) (99642-97)*

1. Install the **new** O-rings (4) in the grooves around the breather screw holes on the carburetor or induction module side of the backplate (1 or 2).
2. Remove the backing from the adhesive side of the backplate gasket (3). Carefully align the holes, and install the gasket on the carburetor or induction module side of the backplate.
3. Insert the breather screws (removed in Step 2) through the backplate. Apply a small amount of threadlocker (9) to the breather screw threads and the mating tapped holes in the cylinder head, then install the screws into the cylinder head. **DO NOT** tighten completely at this time.
4. Apply a small amount of threadlocker to the backplate mounting screw (5) threads. Install the screws all the way through the backplate and gasket until the screw threads are captured in the carburetor or induction module. **DO NOT** tighten completely at this time.
5. Alternately secure the two breather screws. Tighten.  
Torque: 13.6–16.3 N·m (120–144 **in-lbs**) screw
6. Lubricate the O-rings (6) with clean engine oil or white lithium grease. Install the O-rings onto the breather plugs. Press the breather plugs (10) into the breather screw cavities.
7. Secure the three backplate mounting screws. Tighten.  
Torque: 6.2–6.8 N·m (55–60 **in-lbs**) screw

## Air Filter Element and Air Tube Installation

### NOTE

*This air filter is PRE-OILED and ready to install.*

1. With the countersunk holes facing outward, slide the mounting ring all the way onto the intake tube (12), up to the flange.
2. Place the gasket (7) against the opposite side of the flange.
3. Align the holes in the gasket with the mounting ring (13) holes and notches in the intake tube flange.
4. Apply a small amount of threadlocker to the threads of the three flat head screws (8).
5. Secure the intake tube, mounting ring and gasket to the air cleaner backplate, and tighten the screws.  
Torque: 6.2–6.8 N·m (55–60 **in-lbs**) screw
6. Install the air filter element onto the intake tube approximately 5/8 inch (16 mm). Check that the filter element end cap logo reads upright, and the band clamp screw mechanism is hidden from view, yet the screw slot is accessible for tightening. Tighten the clamp around the filter element flange.  
Torque: 3.4–4.5 N·m (30–40 **in-lbs**) band clamp
7. Install the rain sock (19) over the air filter element.

### ⚠ WARNING

**Connect positive (+) battery cable first. If positive (+) cable should contact ground with negative (-) cable connected, the resulting sparks can cause a battery explosion, which could result in death or serious injury. (00068a)**

8. Connect the battery cables, positive (+) cable first. See service manual.
9. Install seat. After installing the seat, pull up on the seat to verify that it is secure. See service manual.
10. If removing the Original Equipment (OE) intake you must apply the provided Warning Label in a clearly visible area. We suggest attaching the sticker to the following:
  - a. **Softail:** Right side lower fender
  - b. **Dyna:** Right side swing arm.

### NOTE

*Riding a motorcycle equipped with an exposed oiled air filter under rainy conditions IS NOT RECOMMENDED.*

*Install the rain sock (19) over the air filter element under these circumstances.*

## Air Filter Element Maintenance

### NOTE

*Riding a motorcycle equipped with an exposed oiled air filter under rainy conditions IS NOT RECOMMENDED.*

*Install the rain sock (19) over the air filter element under these circumstances.*

1. Inspect the air filter element every 8,000 km (5,000 mi), or more often under dusty conditions.

### NOTE

*The use of cleaning, drying or oiling methods or products other than those shown will damage the filter and void the manufacturer's warranty.*

*K&N® Air Filter Cleaner is available from a Harley-Davidson dealer, either alone (1 qt/0.95 L sprayer bottle, 99883-88T) or a 12 fl oz/0.35 L sprayer bottle as part of the Filter Care Service Kit (99850-92T).*

*K&N Air Filter Oil is also available from a Harley-Davidson dealer, either alone (12.25 oz/ 347 gram aerosol can, 99882-88T) or a 6.5 oz/ 184 gram aerosol can as part of the Filter Care Service Kit.*

**DO NOT OVER-OIL THE AIR FILTER.** Over-oiling may interfere with the proper performance of the engine and/or certain engine components. If oil is still draining or dripping from the filter media twenty minutes after oiling, clean and oil the filter element again.

2. To clean the element:
  - a. Loosen the hose clamp retaining the air filter element assembly to the air tube. Separate the element from the air tube.

- b. Tap the element to dislodge any loose dirt, then gently brush with a soft bristle brush.
  - c. Spray air filter cleaner liberally onto the cotton filter media and let soak for ten minutes, OR roll or soak the cotton filter media in a shallow pan of air filter cleaner. Remove immediately, and let soak for ten minutes.
  - d. Rinse off the filter media (flowing from the **clean** side to the dirty side), with low-pressure tap water.
  - e. After rinsing, shake off all excess water, and let the filter media air-dry. **DO NOT** use compressed air or a heat gun to speed drying.
  - f. After the filter media is **completely** dry, EITHER spray air filter oil along each pleat, once only, holding the spray nozzle approximately 3 inches (76 mm) away from the media, OR carefully use a squeeze bottle to deposit oil along each pleat, once only. **Let the oil absorb into the filter media for twenty minutes before proceeding.** After twenty minutes, inspect the filter media, and carefully apply oil to any remaining visible white spots on the filter media, and allow to absorb.
3. Install the air filter element onto the intake tube approximately 16 mm (5/8 in). Check that the filter element end cap logo reads upright. Tighten the clamp around the filter element flange.

Torque: 3.4–4.5 N·m (30–40 **in-lbs**) *band clamp*

## SERVICE PARTS

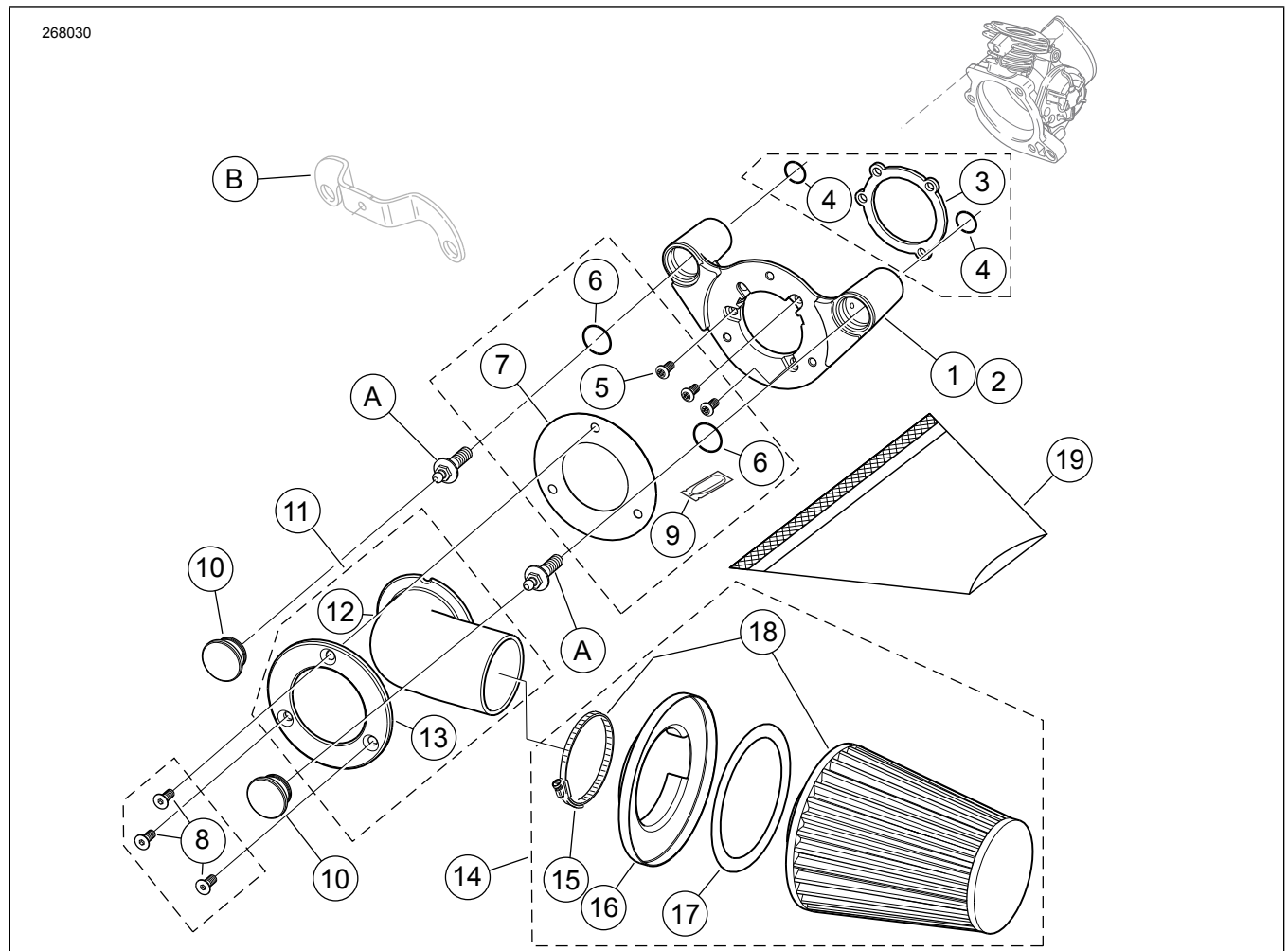


Figure 1. Service Parts: Air Cleaner Kit

## SERVICE PARTS

Table 1. Service Parts Table

Item	Description (Quantity)	Part Number
1	Backplate, air cleaner, chrome	29618-05A
2	Backplate, air cleaner, black	28889-09
3	Gasket, backplate to carburetor or induction module	29059-88A
4	O-ring, backplate (2)	11292
5	Screw, backplate mounting (3)	926
6	O-ring, breather plug (4)	10925

**Table 1. Service Parts Table**

<b>Item</b>	<b>Description (Quantity)</b>	<b>Part Number</b>
7	Gasket, intake tube to backplate	29593-05A
8	Screw, flat head (3)	2986
9	Loctite 243 (blue) Threadlocker and Sealant (0.5 mL tube)	94635-98
10	Plug, breather (2)	29830-05A
11	Intake tube and mounting ring service kit, chrome only (includes items 12 and 13)	29571-08
12	• Intake tube, chrome	Not sold separately
	Intake tube, black	28817-09
13	• Mounting ring, chrome	Not sold separately
	Mounting ring, black	29070-09
14	Air cleaner filter kit (includes items 15 through 18)	29424-05B
15	• Band clamp	Not sold separately
16	• Cover, band clamp (chrome)	Not sold separately
17	• Adhesive ring	Not sold separately
18	• Element, air filter (includes item 15)	Not sold separately
19	Rain sock, air filter	29493-05A
<b>Items mentioned in text, but not included in kit:</b>		
A	Original equipment breather screw (2)	
B	Induction module bracket (remove and discard)	