



# INSTRUCTIONS

J06143

2018-07-27



## SCREAMIN' EAGLE PERFORMANCE AIR CLEANER KIT

### GENERAL

#### Kit Numbers

29400232A

#### Models

For model fitment information, see the P&A Retail Catalog or the Parts and Accessories section of [www.harley-davidson.com](http://www.harley-davidson.com) (English only).

#### Installation Requirements

LOCTITE 243 MEDIUM STRENGTH THREADLOCKER AND SEALANT (BLUE) (99642-97) is required for proper installation of this kit.

#### ⚠ WARNING

**Rider and passenger safety depend upon the correct installation of this kit. Use the appropriate service manual procedures. If the procedure is not within your capabilities or you do not have the correct tools, have a Harley-Davidson dealer perform the installation. Improper installation of this kit could result in death or serious injury. (00333b)**

#### NOTE

*This instruction sheet refers to service manual information. A service manual for this year/model motorcycle is required for this installation. One is available from a Harley-Davidson dealer.*

See a Harley-Davidson dealer for ECM (Electronic Control Module) calibration.

#### Kit Contents

See Figure 1 and Table 1.

#### NOTE

*The kit is intended for High Performance applications only. Engine-related performance parts are intended FOR THE EXPERIENCED RIDER ONLY.*

#### NOTE

*Installation of this kit by an authorized Harley-Davidson dealer will not impact your limited vehicle warranty.*

*The kit is intended for High Performance applications only. This engine-related performance part is legal for sale or use in California on pollution controlled motor vehicles.*

### REMOVAL

#### NOTE

**For vehicles equipped with security siren:** Verify that the hands-free Fob is present. Turn ignition switch ON.

1. **For ALL vehicles:** See the service manual. Remove seat. Retain the seat and all mounting hardware.

#### NOTE

*Verify that the ignition switch is in the OFF position **before** removing the main fuse.*

#### ⚠ WARNING

**To prevent accidental vehicle start-up, which could cause death or serious injury, remove main fuse before proceeding. (00251b)**

2. See the service manual. Remove main fuse.
3. Remove the currently installed air cleaner. Refer to the service manual or the instructions for **THAT** air cleaner.
4. Remove and discard the induction module bracket (A).

### INSTALLATION

#### Install Air Cleaner

#### NOTE

*When servicing the air cleaner, apply LOCTITE 243 MEDIUM STRENGTH THREADLOCKER AND SEALANT (BLUE) (99642-97) to fasteners.*

1. See Figure 1. Install two O-rings (10) from kit in grooves around breather screw holes on induction module side of backplate assembly (9).
2. Align the holes in the gasket (11) with holes in the backplate. Install on the induction module side of the backplate.
3. Apply threadlocker to the threads of the breather screws (8) and the mating tapped holes in the cylinder head.
4. Insert the breather screws through the backplate.
5. Thread screws into the cylinder head but do not tighten.
6. Thread air cleaner mounting screws (5) through the mounting bracket (6) and into the backplate (9) until the screw threads are captured in induction module. Leave fasteners loose.
7. Alternately secure two breather screws (8). Tighten.  
Torque: 13.6–16.3 N·m (120–144 **in-lbs**) Hex socket head screw



8. Secure three air cleaner screws (5). Tighten.  
Torque: 6.2–6.8 N·m (55–60 **in-lbs**) *Hex socket head screw*
9. Press breather plugs (7) into breather screw cavities, aligning tubes with recesses in backplate.
10. If removing the Original Equipment (OE) intake you must apply the provided Warning Label in a clearly visible area. We suggest attaching the sticker to the following:
  - a. **Sportster:** Belt guard or left side battery cover.

## Install air cleaner filter and cover.

### NOTE

*Whenever the air cleaner cover is installed, apply threadlocker to the air cleaner cover screw (2).*

1. See Figure 1. Install the air cleaner element (4) and cover (3). Before tightening the center screw, align the cover for best appearance. Secure center screw. Tighten.  
Torque: 4.1–6.8 N·m (36–60 **in-lbs**) *Hex socket flat head screw*

## Completion

### NOTE

*Verify that the ignition switch is in the OFF position **before** installing the main fuse.*

1. See the service manual. Install main fuse.

### NOTE

*Install the rain sock over the air filter element in wet or rainy conditions to prevent water intrusion.*

*Install the pre-charger (1) over the air filter element under these circumstances.*

## Recalibrate ECM

### NOTICE

**You must recalibrate the ECM when installing this kit. Failure to properly recalibrate the ECM can result in severe engine damage. (00399b)**

See a Harley-Davidson dealer for ECM (Electronic Control Module) calibration.

## Air Filter Element Maintenance

1. Inspect the air filter element every 8,000 km (5,000 mi), or more often under dusty conditions.

### NOTE

- *The use of cleaning, drying or oiling methods or products other than those shown damages the filter and void the manufacturer's warranty*
  - *K&N<sup>®</sup> Air filter Cleaner is available from a Harley-Davidson dealer. 1 qt/0.95 L sprayer bottle, (Part No. 99883-88T) or a 12 fl oz/0.35 L sprayer bottle as part of the Filter Care Service Kit (Part No. 99850-92T).*
  - *K&N Air Filter Oil is also available from a Harley-Davidson dealer. (12.25 oz/347 gram aerosol can, Part No. 99882-88T) or a 6.5 oz/184 gram aerosol can as part of the Filter Care Service Kit.*
  - **DO NOT OVER-OIL THE AIR FILTER.** *Over-oiling may interfere with the proper performance of the engine and/or certain engine components. If oil is still draining or dripping from the filter media 20 minutes after oiling, clean and oil the filter element again.*
2. To clean the element:
    - a. Remove the air cleaner cover center screw.
    - b. Tap the element to dislodge any loose dirt. Gently brush with a soft bristle brush.
    - c. Spray air filter cleaner liberally onto the cotton filter media. Let soak for ten minutes OR roll and soak the cotton filter media in a shallow pan of air filter cleaner. Remove immediately, and let soak for ten minutes.
    - d. Rinse off the filter media (flowing from the **clean** side to the dirty side), with low-pressure tap water.
    - e. After rinsing, shake off all excess water, and let the filter media air dry. DO NOT use compressed air or a heat gun to speed drying.
    - f. After the filter media is **completely** dry. EITHER spray air filter oil along each pleat, once only, holding the spray nozzle approximately 76 mm (3 in) away from the media, OR carefully use a squeeze bottle to deposit oil along each pleat, once only. **Let the oil absorb into the filter media for 20 minutes before proceeding.** After 20 minutes, inspect the filter media. Carefully apply oil to any remaining visible white spots on the filter media. Allow to absorb.

## Service Parts

298480

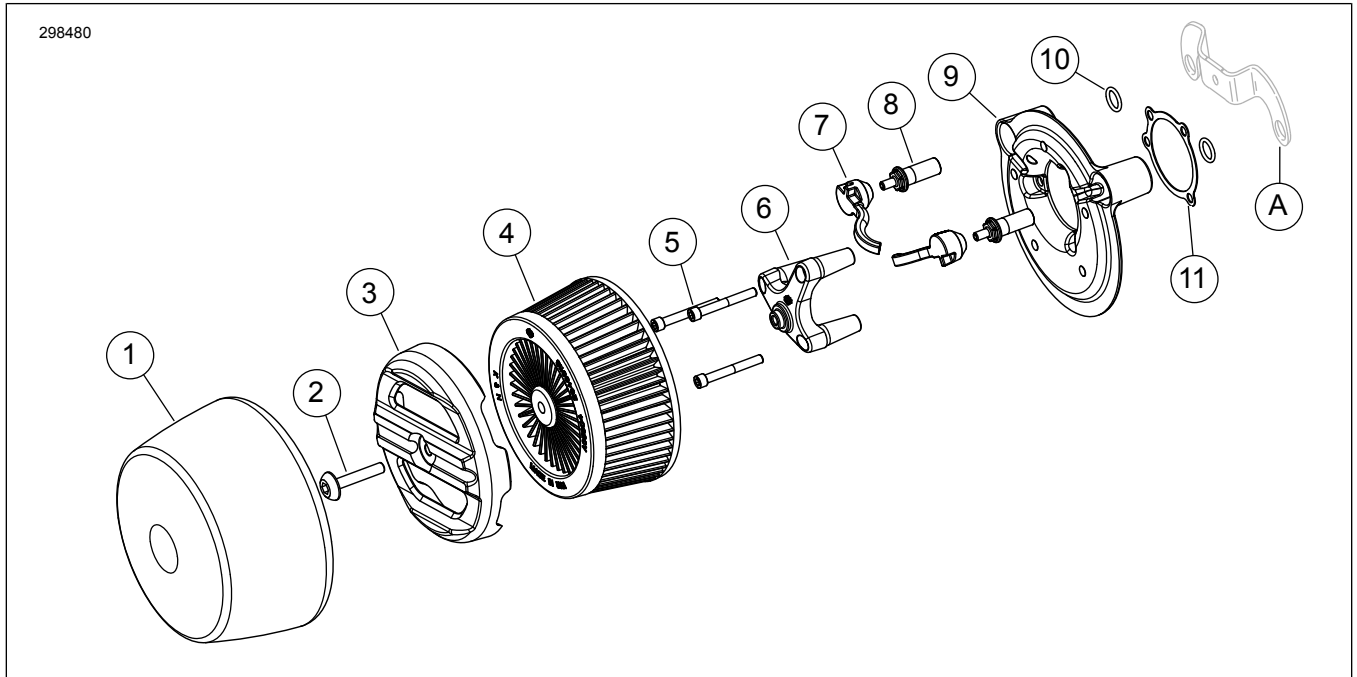


Figure 1. Service Parts, Screamin' Eagle Performance Air Cleaner Kit

Table 1. Service Parts

Item	Description (Quantity)	Part Number
1	Pre-charger	29400121
2	Screw, hex socket, button head, 5/16-18 x 2 in.	10200401
3	Cover, air cleaner	61300539A
4	Element, air cleaner	29400118
5	Screw, socket head, 1/4-20 x 2 in. (3)	Not sold separately
6	Bracket, mounting	29400119
7	Plug, breather (2)	29557-05
8	Breather screw (2)	29400001
9	Backplate, black	Not sold separately
10	O-ring, #2-113 (2)	11292
11	Gasket, throttle body	29059-88A
<b>Items mentioned in text, but not included in kit:</b>		
A	Induction module bracket	