



INSTRUCTIONS

J06761

2019-08-20



SIDE MOUNT LICENSE PLATE KIT

GENERAL

Kit Numbers

60972-10A

Models

For model fitment information, see the P&A retail catalog or the Parts and Accessories section of www.harley-davidson.com (English only).

Installation Requirements

⚠ WARNING

Rider and passenger safety depend upon the correct installation of this kit. Use the appropriate service manual procedures. If the procedure is not within your capabilities or you do not have the correct tools, have a Harley-Davidson dealer perform the installation. Improper installation of this kit could result in death or serious injury. (00333b)

NOTE

This instruction sheet refers to service manual information. A service manual for this year/model motorcycle is required for this installation and is available from a Harley-Davidson dealer.

Kit Contents

See Figure 4 and Table 1.

PREPARE

NOTE

For vehicles equipped with security siren:

- **2007 and later:** Verify that the hands-free fob is present. Turn the ignition key switch to IGNITION.
- **2006 and earlier:** Disarm the siren with the key fob.

⚠ WARNING

To prevent accidental vehicle start-up, which could cause death or serious injury, remove main fuse before proceeding. (00251b)

1. Remove main fuse. See the service manual.

REMOVE

1. Remove the existing license plate.
2. Remove bracket from the rear fender, if center-mounted.

3. See Figure 4. Remove the frame rail cover mounting screws and turn signal nut from the left side of the motorcycle. Remove the frame rail cover (B).
4. Remove the left turn signal following the service manual instructions. Remove the existing mounting bolt.
5. If installed, remove OE side-mount license plate bracket from fender by drilling out rivets.

INSTALL

1. See Figure 1. Install the fender hole cover (1), and attach to the fender with push nuts (2).

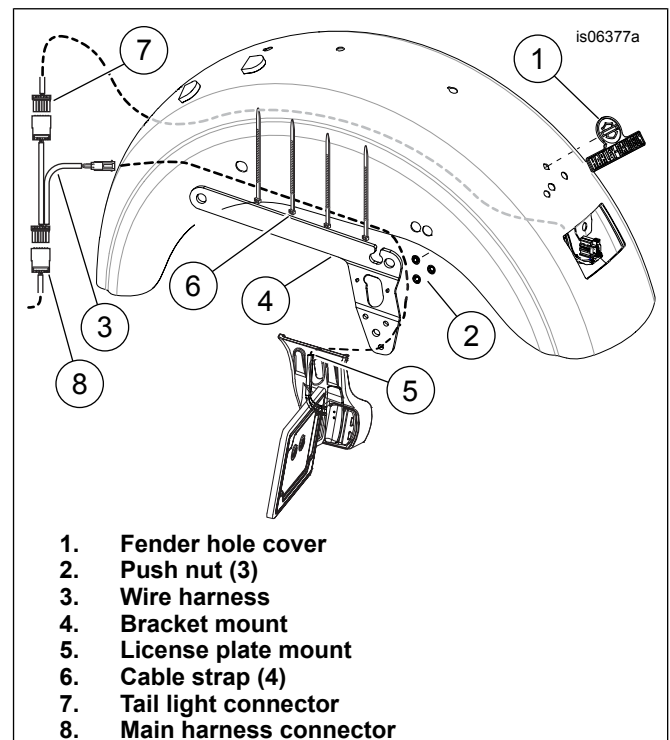


Figure 1. Wire Harness Routing and Fender Hole Cover

2. Install left side turn signal mounting bolt (17) and turn signal to frame rail cover (B) using service manual procedures.
3. See Figure 4. Install the light (9) to the license plate mount (11) using screws (8).
4. Install mount bracket (3).
 - a. Position the mount bracket (3) between the fender and frame rail (A).

- b. **If necessary**, position side reflector mounting bracket (sold separately) inside fender. Mount side reflector (sold separately) to the reflector bracket.
- c. Loosely install the frame rail cover (B), washers (C), and the **new** screws (4, 5) from the kit, using the longer screw in the front.

5. See Figure 1. Connect license plate light.

- a. Pass the license light wires through the hole in the mount bracket.
- b. Route the license light wire between the mount bracket (4) and the license plate mount (5).
- c. Route harness along the underside of the mount bracket (4).
- d. Use four cable ties (6) to attach the wires to the mount bracket.
- e. **OE license plate mount included light:** Connect the new license plate wire to the license plate light connector on the motorcycle harness. **2014 and later:** Use kit harness (3) as an adapter leaving the extra connector loose.
- f. **Connector is not present on motorcycle harness:** Connect the correct size kit wiring harness (3) to the rear fender connectors (7, 8) for the tail lights. Connect the light wire to the harness.

6. See Figure 4. Assemble the license plate mount (11) to the mount bracket with long screws (7). Tighten.

Torque: 10.8–13.5 N·m (96–119 **in-lbs**) *TORX head screw*

7. Install mounting screws (6) through bracket into mount.

8. Tighten frame rail cover screws.

Torque: 13.6–19 N·m (120–168 **in-lbs**) *Frame rail cover screws*

9. Adhere black foam pads to rear facing surface of license plate mount (11).

10. Adhere clear tape squares to inside of frame cover (14) at corners.

11. Place the license plate to the license plate mount (11) and install the frame cover (14) using set screws (10).

COMPLETE

1. Install the main fuse. See the service manual.

⚠ WARNING

After installing seat, pull upward on seat to be sure it is locked in position. While riding, a loose seat can shift causing loss of control, which could result in death or serious injury. (00070b)

2. Install the seat. See the service manual.

⚠ WARNING

Federal Motor Vehicle Safety Standard (FMVSS) 108 requires motorcycles to be equipped with rear and side reflectors. Be sure rear and side reflectors are properly mounted. Poor visibility of rider to other motorists can result in death or serious injury. (00336b)

3. **For models with original equipment (OE) center-mounted plates only:** Clean the rear fender area beneath the tail lamp with a mixture of 50 to 70% isopropyl alcohol and 30 to 50% distilled water. Allow to dry completely.

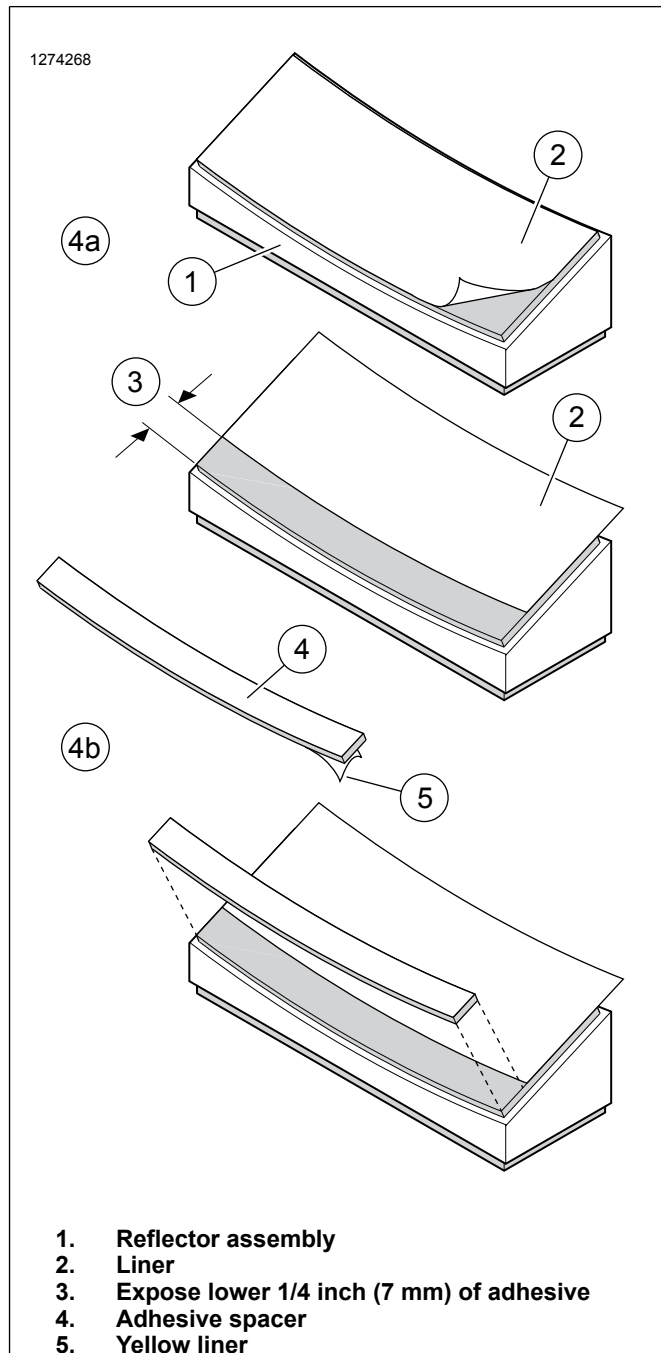


Figure 2. Installing Adhesive Spacer To Reflector (center-mount models only)

4. See Figure 2. The adhesive spacer (4) must be added to the back of the reflector to position the reflector at the correct angle for optimal visibility.

- a. Peel the liner (2) from the adhesive surface of the reflector assembly (1). Re-position the liner to expose the lower 1/4 inch (7 mm) of adhesive (3).
- b. Peel the yellow liner (5) from the adhesive spacer (4). Carefully position the spacer to the exposed adhesive surface of the reflector assembly, and press firmly into place.

5. Before removing the adhesive backing of the reflector assembly, test fit the reflector to the fender, centered from left to right, so the reflector surface is parallel to the face of the tail lamp lens.

- a. Measure and lightly mark the centerline of the black reflector base, tail lamp lens, and the rear fender below the tail lamp with a wax pencil or water-based marker.
- b. Use a straight-edge to find a location on the fender as indicated in the view in Figure 3 for your model motorcycle. Do not follow the curve of the fender, but measure straight down. Make a horizontal mark on the fender at this location.
- c. Position the reflector to the rear fender, with the top of the black base at the horizontal mark. Verify that the reflector surface is parallel to the face of the tail lamp lens, adjusting the position of the reflector up or down slightly as necessary to become parallel. Mark the final location of the reflector on the fender.
- d. Remove un-needed markings from the fender and reflector base, and clean any dirt or grease from the fender in the reflector mounting area.

6. Mount reflector.

- a. Peel the liner from the adhesive backing of the reflector assembly (and the spacer if installed).

- b. Carefully position the reflector to the rear fender, and press firmly into place.
- c. Hold the reflector in position with steady pressure for five minutes for proper adhesion.

NOTE

Allow AT LEAST 24 hours after applying the reflector before exposing the area to vigorous washing, strong water spray or extreme weather.

The adhesive bond will increase to maximum strength after about 72 hours at normal room temperature.

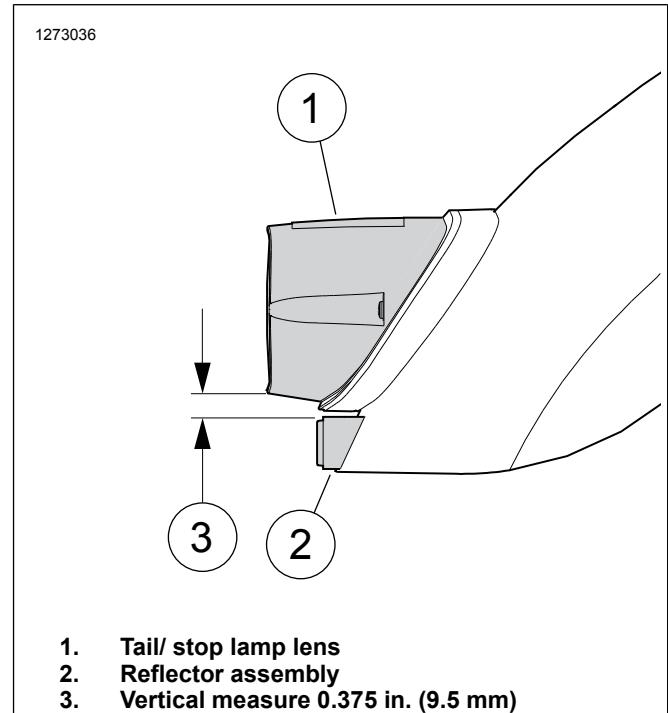


Figure 3. Reflector Mounting

SERVICE PARTS

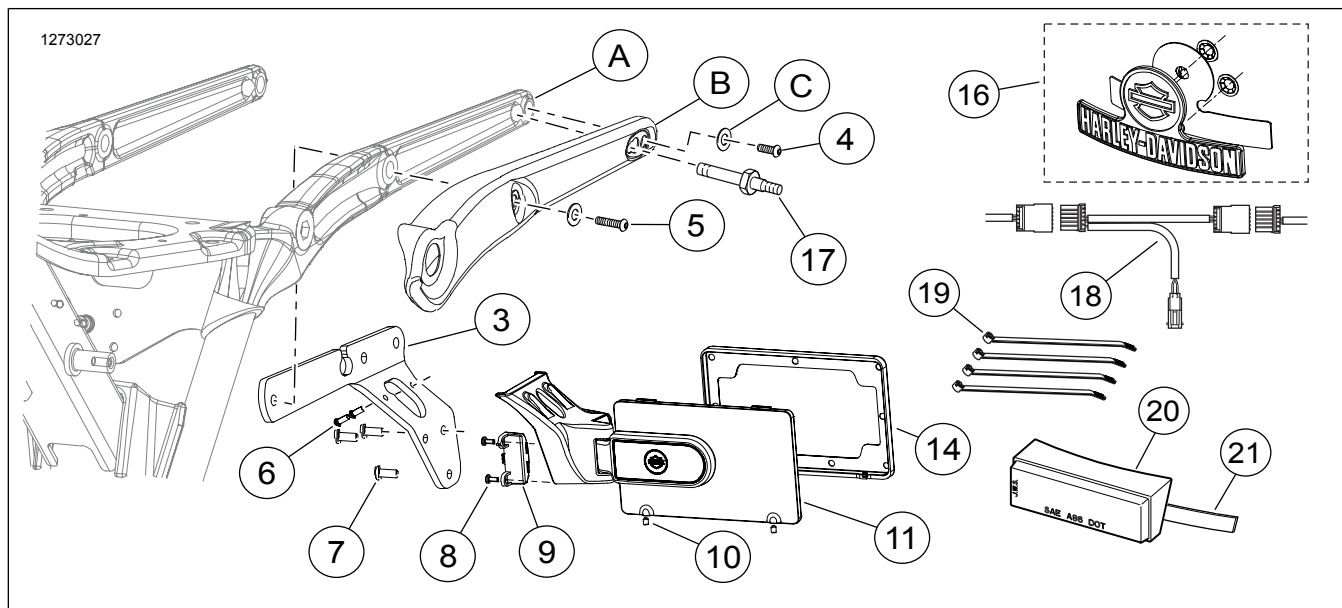


Figure 4. Service Parts: Side Mount License Plate Kit

Table 1. Service Parts

Item	Description (Quantity)	Part Number
3	XL mount bracket	Not sold separately
4	Screw, TORX® button head, 5/16-18 x 1-3/8 in long	Not sold separately
5	Screw, TORX button head, 5/16-18 x 1-7/8 in long	Not sold separately
6	Screw, TORX button head, #8-32 x 1/2 in long, with lock patch (2)	8679
7	Screw, hex socket button head, 1/4-20 x 5/8 in long (3)	924
8	Screw, TORX pan head, #8-32 x 3/8 in long (2)	2480
9	Illuminator, license plate	68183-07
10	Set screw	Not sold separately
11	License plate mount assembly	Not sold separately
14	Cover, license plate frame	Not sold separately
16	Fender hole cover, H-D Bar & Shield	60311-10
17	Bolt, turn signal mount	5531
18	Wire harness, license plate light	Not sold separately
19	Cable strap (4)	10006
20	Reflector	59365-07
21	Mounting tape	Not sold separately
	Foam pad (5) (Not shown)	Not sold separately
	Tape square, clear (4) (Not shown)	Not sold separately
Items mentioned in text, but not included in kit:		
A	Frame rail	
B	Frame rail cover	
C	Washer (2)	