



INSTRUCTIONS

J06382


2022-03-10



DETACHABLE SADDLEBAG KITS

GENERAL INFORMATION

Table 1. General Information

Kits	Suggested Tools	Skill Level ⁽¹⁾
90201513A, 90201552A, 90201555A, 90201561A, 90201644A, 90201645A	Safety Glasses, Torque Wrench	
<i>(1) Tightening to torque value or other moderate tools and techniques required</i>		

KIT CONTENTS

1279294

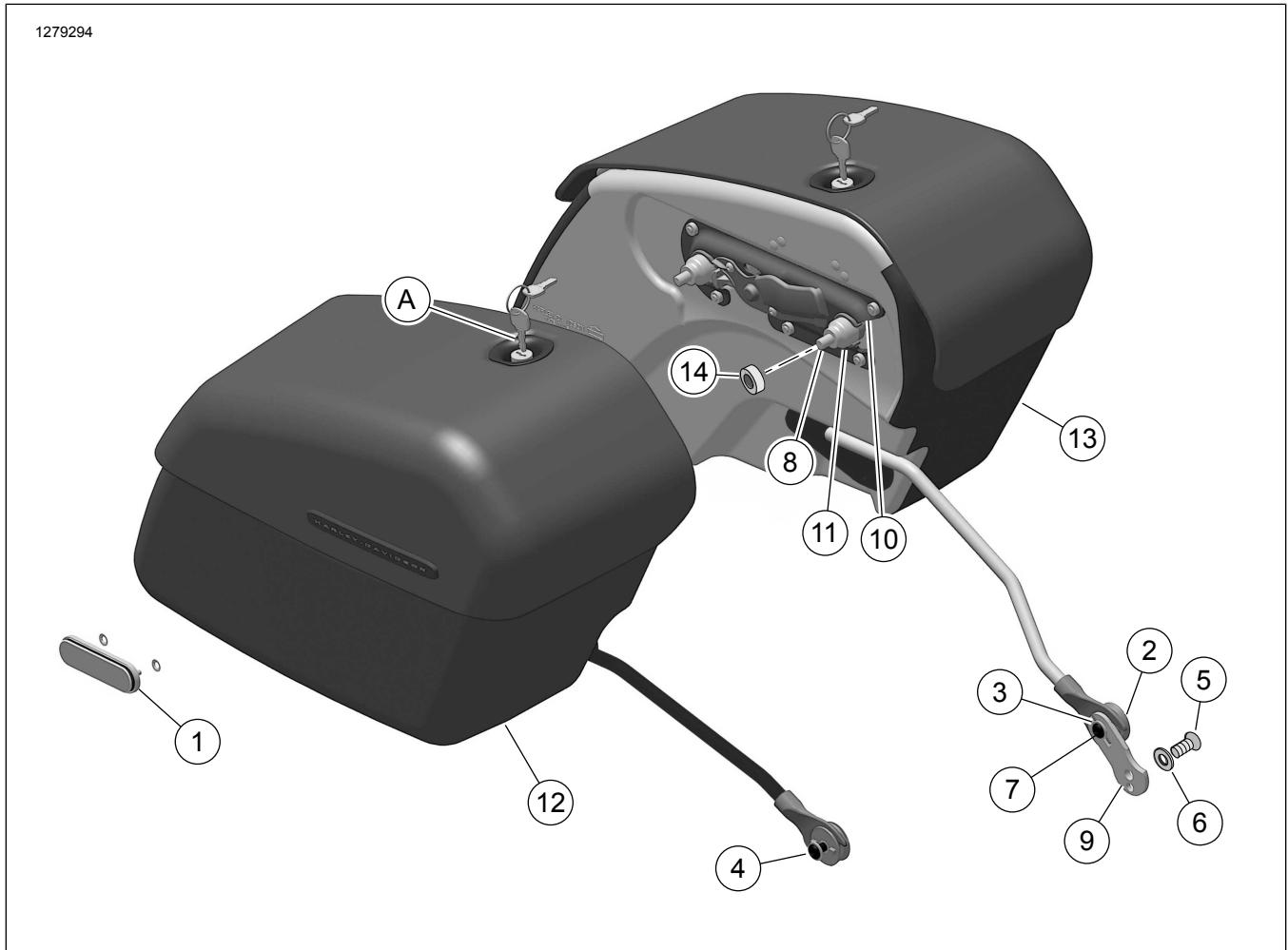


Figure 1. Kit Contents: Detachable Saddlebag Kits

Table 2. Kit Contents

<input checked="" type="checkbox"/>	Item	Qty	Description	Part No.	Notes
<input type="checkbox"/>	1	2	Reflector kit	59480-04A	6.8–10.16 N·m (60–90 in-lbs)
<input type="checkbox"/>	2	2	Docking point, lower	90201524	
<input type="checkbox"/>	3	1	Screw, hex socket button head	3540	6.8–10.2 N·m (60–90 in-lbs)
<input type="checkbox"/>	4	1	Screw, hex socket button head	4016	6.8–10.2 N·m (60–90 in-lbs)
<input type="checkbox"/>	5	1	Screw, hex socket button head	4097	47.5–61 N·m (35–45 ft-lbs)
<input type="checkbox"/>	6	1	Washer, plain	6701	
<input type="checkbox"/>	7	2	Washer, plain	6702	
<input type="checkbox"/>	8	4	Screw, Torx socket	10200045	28.5–36.6 N·m (21–27 ft-lbs)
<input type="checkbox"/>	9	1	Docking point bracket, lower	90201764	
<input type="checkbox"/>	10	4	Docking Point, upper	90201763	
<input type="checkbox"/>	11	4	Spacer	90201541	
<input type="checkbox"/>	12	1	Saddlebag, right	90201514	Kit 90201513A
<input type="checkbox"/>		1	Saddlebag, right	90201553	Kit 90201552A
<input type="checkbox"/>		1	Saddlebag, right	90201556	Kit 90201555A
<input type="checkbox"/>		1	Saddlebag, right	90201642	Kit 90201561A
<input type="checkbox"/>		1	Saddlebag, right	90201646	Kit 90201644A
<input type="checkbox"/>		1	Saddlebag, right	90201647	Kit 90201645A
<input type="checkbox"/>	13	1	Saddlebag, left	90201515	Kit 90201513A
<input type="checkbox"/>		1	Saddlebag, left	90201554	Kit 90201552A
<input type="checkbox"/>		1	Saddlebag, left	90201758	Kit 90201555A
<input type="checkbox"/>		1	Saddlebag, left	90201643	Kit 90201561A
<input type="checkbox"/>		1	Saddlebag, left	90201648	Kit 90201644A
<input type="checkbox"/>		1	Saddlebag, left	90201649	Kit 90201645A
<input type="checkbox"/>	14	6	Spacer	91414-00	Kits 90201513A, 90201645A
<input type="checkbox"/>		4			Kits 90201555A, 90201644A
Items mentioned in text, but not included in kit.					
<input checked="" type="checkbox"/>	A	1	Replacement lock kit, saddlebag (includes set of two keys)	90201087	

NOTE

Verify all contents are present in the kit before installing or removing items from vehicle.

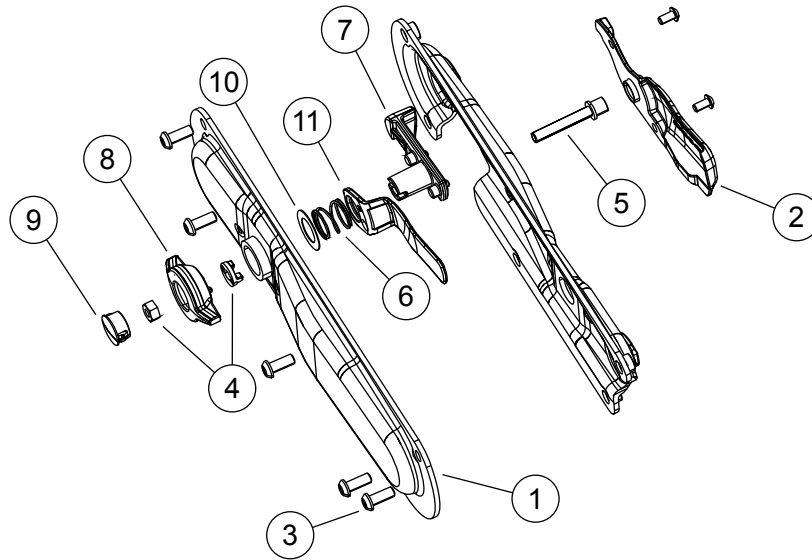


Figure 2. Kit Contents: Saddlebag Latch Assembly

Table 3. Kit Contents: Saddlebag Latch Assembly

<input checked="" type="checkbox"/>	Item	Qty	Description	Part No.	Notes
<input type="checkbox"/>	1	1	Saddlebag Mounting Bracket, Inner, RH used on 90201513A, 90201645A	90201617	
<input type="checkbox"/>		1	Saddlebag Mounting Bracket, Inner, RH used on 90201555A, 90201644A, 90201561A, 90201552A	90201536	
<input type="checkbox"/>		1	Saddlebag Mounting Bracket, Inner, LH used on 90201513A, 90201645A	90201620	
<input type="checkbox"/>		1	Saddlebag Mounting Bracket, Inner, LH used on 90201555A, 90201644A, 90201561A, 90201552A	90201537	
<input type="checkbox"/>	2	1	Saddlebag Mounting Bracket, Outer, RH used on 90201513A, 90201645A	90201618	
<input type="checkbox"/>		1	Saddlebag Mounting Bracket, Outer, RH used on 90201555A, 90201644A, 90201561A, 90201552A	90201516	
<input type="checkbox"/>		1	Saddlebag Mounting Bracket, Outer, LH used on 90201513A, 90201645A	90201619	
<input type="checkbox"/>		1	Saddlebag Mounting Bracket, Outer, LH used on 90201555A, 90201644A, 90201561A, 90201552A	90201517	
<input type="checkbox"/>	3	5	Screw, Buttonhead, Locking, Torx Drive	1001	6.8–10.16 N·m (60–90 in-lbs)
<input type="checkbox"/>	4	1	Saddlebag Latch Service Kit	90201945	
<input type="checkbox"/>	5	1	Screw, Socket Head, Sems	10500009	1.7–3.4 N·m (15–30 in-lbs)
<input type="checkbox"/>	6	1	Compression Spring	11700004	
<input type="checkbox"/>	7	1	Latching Arm	90200481	1–1.7 N·m (9–15 in-lbs)
<input type="checkbox"/>	8	1	Latch Handle	90200483	
<input type="checkbox"/>	9	1	Latch Cap	90200484	1–1.7 N·m (9–15 in-lbs)
<input type="checkbox"/>	10	1	Spring Spacer, Latching Arm	90200515	
<input type="checkbox"/>	11	1	Saddlebag Indicator, RH	90201760	
<input type="checkbox"/>		1	Saddlebag Indicator, LH	90201759	

NOTE

Verify all contents are present in the kit before installing or removing items from vehicle.

GENERAL

Models

For model fitment information, see the P&A retail catalog or the Parts and Accessories section of www.harley-davidson.com (English only).

Ensure you are using the most current version of the instruction sheet which is available at: www.harley-davidson.com/isheets

Contact Harley-Davidson Customer Support Center at 1-800-258-2464 (U.S. only) or 1-414-343-4056.

Installation Requirements

Some models may require separate purchase of a Turn Signal/License Plate Relocation Kit. This kit provides adequate clearance for the saddlebags and for all detachable accessories. See the P&A Retail Catalog or the Parts and Accessories section of www.harley-davidson.com (English only).

These items can be purchased from a Harley-Davidson dealer.

LOCTITE 243 MEDIUM STRENGTH THREADLOCKER AND SEALANT (BLUE) (99642-97) is required for the proper installation of this kit.

▲ WARNING

Rider and passenger safety depend upon the correct installation of this kit. Use the appropriate service manual procedures. If the procedure is not within your capabilities or you do not have the correct tools, have a Harley-Davidson dealer perform the installation. Improper installation of this kit could result in death or serious injury. (00333b)

NOTE

This instruction sheet references service manual information. A service manual for your model motorcycle is required for this installation and is available from a Harley-Davidson dealer.

Kit Contents

See Figure 1 and Table 2.

▲ WARNING

Do not exceed saddlebag weight capacity. Put equal weight in each bag. Too much weight in saddlebags can cause loss of control, which could result in death or serious injury. (00383a)

NOTE

Maximum saddlebag weight capacity is 6.8 kg (15 lb).

PREPARATION

Models with main fuse:

▲ WARNING

To prevent accidental vehicle start-up, which could cause death or serious injury, remove main fuse before proceeding. (00251b)

1. See service manual and follow the instructions given to remove the seat and main fuse. Retain all seat mounting hardware.

Install Turn Signal Relocation Kit

If a turn signal/license plate relocation kit is required, refer to instructions included with Turn Signal Relocation Kit.

Install Docking Points onto Fender Struts

1. See Figure 3. Install spacer (1) and docking point (2) onto new fender strut bolt (3).
2. Install bolt through fender strut and fender into nut plate on the inside of the fender.
3. **Kits 90201513A, 90201645A:** Install spacer (4) on the front docking point between fender strut and spacer (1).

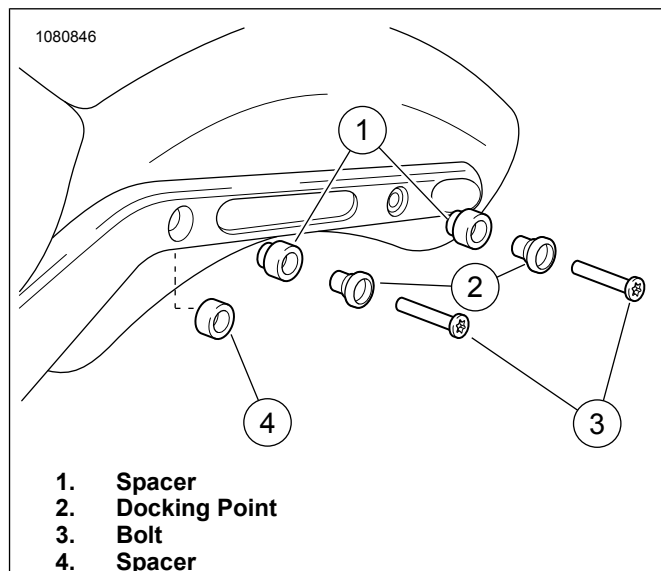


Figure 3. Fender Strut Docking Points

Install Lower Support Arms to Saddlebags

1. See Figure 4. Apply threadlocker to threads of screw (3). Consumable: LOCTITE 243 MEDIUM STRENGTH THREADLOCKER AND SEALANT (BLUE) (99642-97)
2. Loosely install lower support arm (1) on both saddlebags using flat washers (2) and screws (3).
 - a. The lower support arm fits in slot on back of saddlebag.
 - b. The hardware mounts the arm from inside the saddlebag.

- c. Kits 90201513A, 90201555A, 90201644A, 90201645A: requires two spacers (7) per side, between arm and saddlebag.

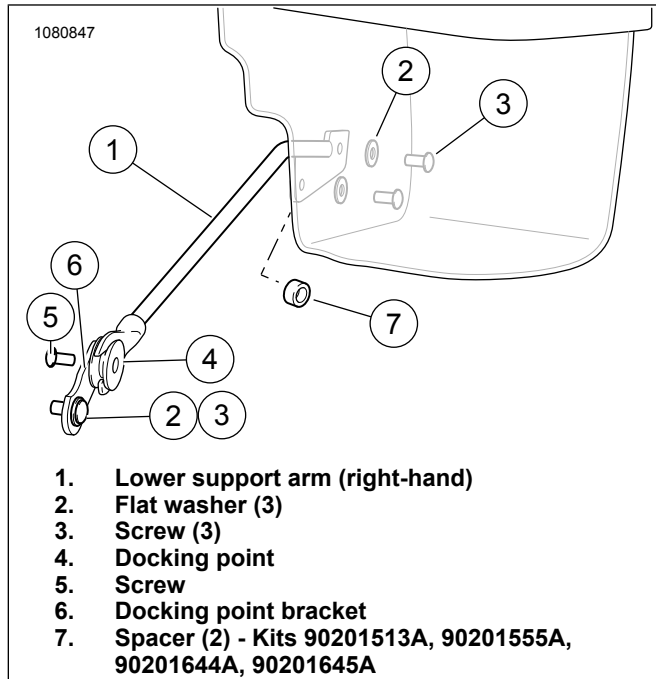


Figure 4. Lower Arm Support

Saddlebag Installation

1. See Figure 1. Open saddlebag.
2. Pull on knob (located on the inside of saddlebag) outward, rotate towards green to unlatch and toward red to latch.
3. Approach the vehicle with the saddlebag tipped slightly forward and insert the fork end of the lower support arm over the lower front mini docking point.
 - a. The thickness of the end of the lower support arm should engage in the reduced diameter plastic groove of the mini docking point at the lower front docking point location.
4. Slide the saddlebag forward on the vehicle making sure it is fully seated into all three docking points.
5. Ensure the saddlebag is fully locked into position. An indicator is placed on the backside of the saddlebag to show when the bag is locked (flag down) or unlocked (flag up).
6. Secure lower support arm screws. Tighten.

Torque: 6.8–10.2 N·m (60–90 in-lbs)

Install Lower Front Docking Point

NOTE

See Figure 5. Install docking point components onto lower front support before installing lower front support onto vehicle. Make sure all spacers and mini docking points are aligned before continuing.

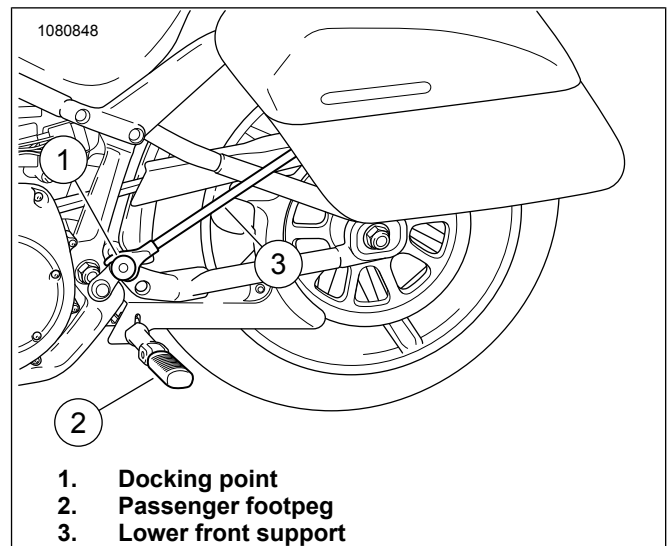


Figure 5. Lower Front Support and Docking

Adjust Lower Front Docking Point

1. See Figure 4. Install docking point (4) onto docking point bracket (6) with screw (5). Docking point should be facing outboard when installed on vehicle. Tighten.

Torque: 6.8–10.2 N·m (60–90 in-lbs)
2. See Figure 5. Install docking point bracket onto frame with docking point facing out, aligning notch in bracket to swingarm pivot nut.

NOTE

Depending on vehicle, footpeg support may need to be removed first.

- a. If vehicle has passenger footpegs, install docking bracket against frame and install footpeg support on top of bracket. Tighten.

Torque: 47.5–61 N·m (35–45 ft-lbs)
- b. See Figure 4. If vehicle does not have passenger footpegs, install bracket onto frame using screw (3) and washer (2). Tighten.

Torque: 16.3–24.4 N·m (12–18 ft-lbs)
3. See Figure 5. While holding lower front support (3) to prevent rotation, tighten screw using an extended T50 TORX drive head. Tighten.

Torque: 47.5–61 N·m (35–45 ft-lbs)

Install Passenger Footpeg

Install passenger footpeg on footpeg support using clevis pin.

NOTE

2018 Softtail vehicles, the passenger footpeg is secured with pins, retention plate, spring and ball.

Install Reflectors

NOTE

Ambient temperature should be at least 16° C (60° F) for proper adhesion of the reflectors to the reflector mounts. Do not remove the liner until ready to apply the reflector.

▲ WARNING

Federal Motor Vehicle Safety Standard (FMVSS) 108 requires motorcycles to be equipped with rear and side reflectors. Be sure rear and side reflectors are properly mounted. Poor visibility of rider to other motorists can result in death or serious injury. (00336b)

1. See Figure 6. Position reflector mount (1) in center of saddlebag.

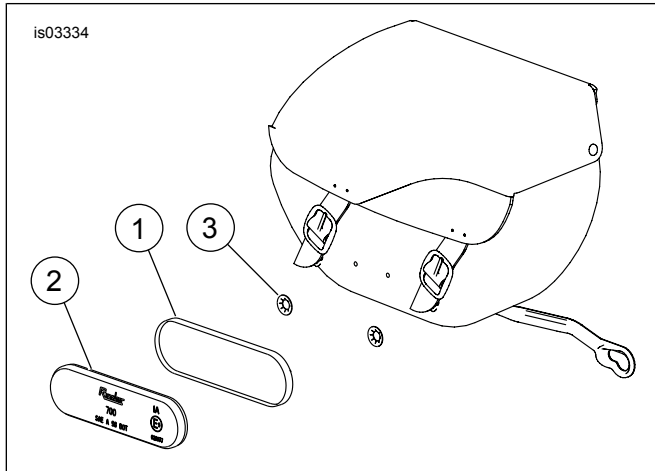


Figure 6. Install reflectors

2. Mark holes on saddlebag with pen or other suitable tool.
3. Clean surface of the reflector mount (1) where reflector will be installed with soapy water or a mixture of 50-70% isopropyl alcohol and 30-50% distilled water. Allow to dry thoroughly.
4. Remove liner from the adhesive backing of the reflector (2).
5. Carefully position the reflector to the reflector mount and press firmly into place.
6. Hold the reflector in position with steady pressure for at least one minute.
7. Using a suitable tool, make two 3/16 inch holes in saddlebag at locations marked in Step 2.
8. Install reflector mount (1) on saddlebag using two push nuts (3). The push nuts are installed from inside the saddlebag.

NOTE

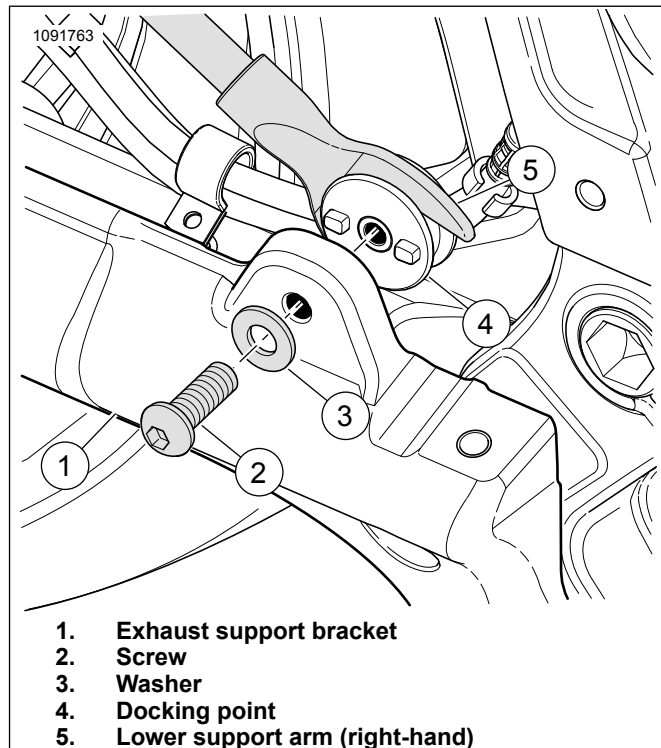
Allow at least 24 hours after applying the reflector before exposing the area to vigorous washing, strong water spray or extreme weather.

The adhesive bond will increase to maximum strength after about 72 hours at normal room temperature.

Install Opposite Lower Front Docking Point and Saddlebag

1. Remove exhaust. See service manual.

2. Repeat same tasks as opposite side of vehicle to install the lower front docking point and saddlebag.
3. See Figure 7. Attach docking point (4) to the exhaust support bracket (1) on the inside of the vehicle.
4. Install exhaust. See service manual.



1. Exhaust support bracket
2. Screw
3. Washer
4. Docking point
5. Lower support arm (right-hand)

Figure 7. Lower Arm Support (Right-Side)

Final Assembly

NOTE

Verify that the ignition/light key switch is in the OFF position before installing the main fuse/attaching the battery cables.

1. Install main fuse. See service manual.
2. Install seat. After installing seat, pull up on the seat to verify that it is secure. See service manual.

MAINTENANCE

Docking Point Screws

NOTICE

Failure to tighten hardware to the specified torque could result in damage to the installed accessory. (00508b)

1. After 500 miles of on the road use with saddlebags installed, it is necessary to check the torque on the docking point mounting screws. Check to make sure the proper torque is maintained and tighten screws if necessary. Tighten.
 - a. Upper docking point screws.
Torque: 28.5–36.6 N·m (21–27 ft-lbs)

- b. Lower front docking point screws.
Torque: 16.3–24.4 N·m (12–18 ft-lbs)
- c. Saddlebag lower support arm screws.
Torque: 6.8–10.2 N·m (60–90 **in-lbs**)

Saddlebag Care

Apply the Harley-Davidson Genuine Leather Dressing included with the saddlebag according to the instructions in the leather care kit. Additional jars are available from a Harley-Davidson dealer (HD Part Number 9826191V).