



# INSTRUCTIONS

J00931

2024-01-23



## FL BACKREST PAD KITS

### GENERAL

#### Kit Number

51579-05A, 51633-06A, 51727-05A, 51980-08, 52555-94A, 52657-04B, 52708-97C, 52709-97C, 52886-98D, 52920-98B, 52924-98B, 52300141A, 523000028A, 52300300, 52300361, 52300566, 52300573, 52300734, 52300740

#### Models

For model fitment information, see the P&A Retail Catalog or the Parts and Accessories section of [www.harley-davidson.com](http://www.harley-davidson.com) (English only).

#### Kit Contents

See Figure 1 and Table 1.

### INSTALLATION

1. See Figure 1. If necessary, cut the plastic rain seal away from the three pre-cut screw holes (D) in the backrest pad (1) to prevent the plastic from catching in the threads.
2. On vehicle with Detachable Sissy Bar Upright installed for **Passenger Sissy Bar Upright (A)**:
  - a. Insert three long spacers (3) into pre-cut holes (D) in backrest pad (1).

- b. Position backrest (1) against sissy bar upright (A).

3. On vehicle with Detachable Sissy Bar Upright installed for **Short Passenger Sissy Bar Upright (B)**:

- a. Position backrest (1) against sissy bar upright (B).
- b. Insert three long spacers (3) through the slots in sissy bar tabs (C) into pre-cut holes (D) in backrest pad (1).

4. Place the mounting bracket (2) against the spacers, so that the holes of the mounting bracket align with the spacers.

#### NOTE

To avoid misalignment and cross threading of the screws, start all three screws into the backrest before tightening.

5. Insert a screw (4) from the kit through one of the spacers, and carefully thread it 4-5 turns into the mating hole in the backrest pad. Repeat with the other two screws. **DO NOT tighten a screw until all three screws have been started.**

#### NOTE

Spacers must seat squarely against the mounting bracket.

6. Once all three screws have been carefully started into the three holes of the backrest pad, tighten the screws. Tighten. Torque: 6.8 N·m (60 in-lbs)

### SERVICE PARTS

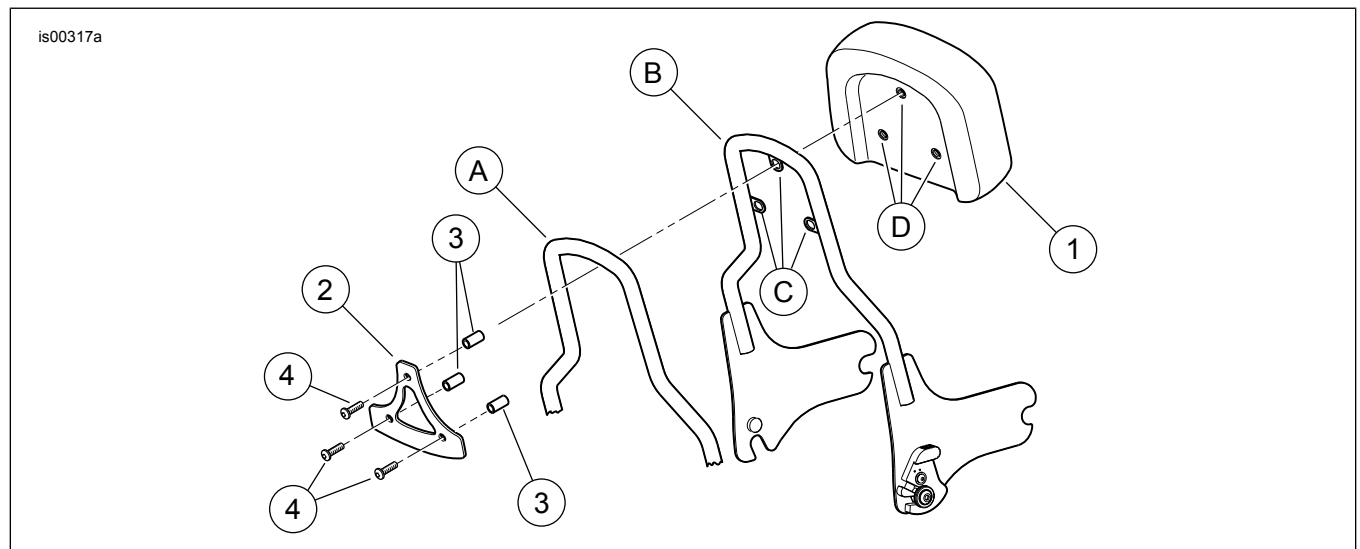


Figure 1. Service Parts: FL Backrest Pad Kits

**Table 1. Service Parts: FL Backrest Pad Kits**

<b>Item</b>	<b>Description (Quantity)</b>	<b>Part Number</b>
1	Backrest pad (Generic style pad shown)	Not sold separately
2	Mounting bracket	52565-94
3	Spacer, long (3)	51593-05
4	Screw, button head, hex socket 1/4-20 x 1-3/8 in.	10200202
Items not included in kit:		
A	Detachable sissy bar upright or luggage rack (typical upright shown)	
B	Detachable Short Passenger Sissy Bar (short upright shown)	
C	Backrest mounting tabs (3)	
D	Pre-cut screw holes (3)	