



INSTRUCTIONS

J06090

2019-08-21



TRANSMISSION SIDE COVERS: HYDRAULIC

GENERAL

Kit Number

34800026, 25800063, 25800065, 25800087, 25800130, 25800132

Models

For model fitment information, see the P&A Retail Catalog or the Parts and Accessories section of www.harley-davidson.com (English only).

Installation Requirements

Separate purchase and installation of additional parts or accessories may be required for proper installation of this kit on your model motorcycle. Please see the P&A Retail Catalog or the Parts and Accessories section of www.harley-davidson.com (English only) for a list of required parts or accessories for your model.

⚠ WARNING

Rider and passenger safety depend upon the correct installation of this kit. Use the appropriate service manual procedures. If the procedure is not within your capabilities or you do not have the correct tools, have a Harley-Davidson dealer perform the installation. Improper installation of this kit could result in death or serious injury. (00333b)

NOTE

This instruction sheet references Service Manual information. A Service Manual for your model motorcycle is required for this installation and is available from a Harley-Davidson Dealer.

Kit Contents

See Figure 2, Figure 3, Figure 4 and Table 1, Table 2, Table 3

INSTALLATION

NOTE

- **For vehicles equipped with security siren:** With security fob present, turn ignition switch ON. See the service manual. After system is disarmed, turn ignition switch OFF. **IMMEDIATELY** remove the main fuse.
- **For vehicles WITHOUT security siren:** Remove the main fuse. See the service manual.

1. Remove seat. See the service manual.

⚠ WARNING

To prevent accidental vehicle start-up, which could cause death or serious injury, remove main fuse before proceeding. (00251b)

2. Remove main fuse. See the service manual.
3. Loosen or remove components necessary to access transmission side cover.
4. See Figure 1. Remove outer transmission side cover (2).

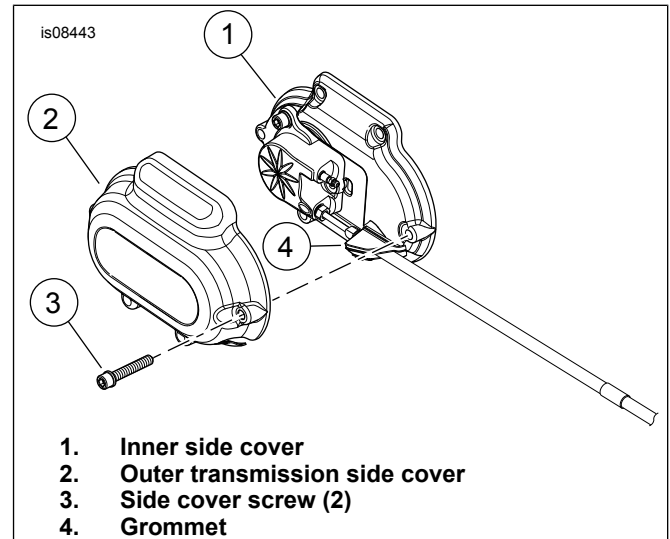


Figure 1. Transmission Side Covers

5. Install outer transmission side cover. Tighten screws: Torque: 11.2–13.6 N·m (100–120 in-lbs) Hex socket head screw.
6. Verify that clutch fluid line grommet is seated securely between the inner side cover and the outer side cover.
7. Tighten or install components that were loosened or removed.
8. Install main fuse. See the service manual.
9. Install seat. After installing seat, pull up on the seat to verify that it is secure. See service manual.

INSERT INSTALLATION (Optional)

1. See Figure 4. Remove screw (2) from insert pockets and retain.



- Install insert (A) with screws (2). Tighten.
Torque: 2.03 N·m (18 in-lbs)

SERVICE PARTS

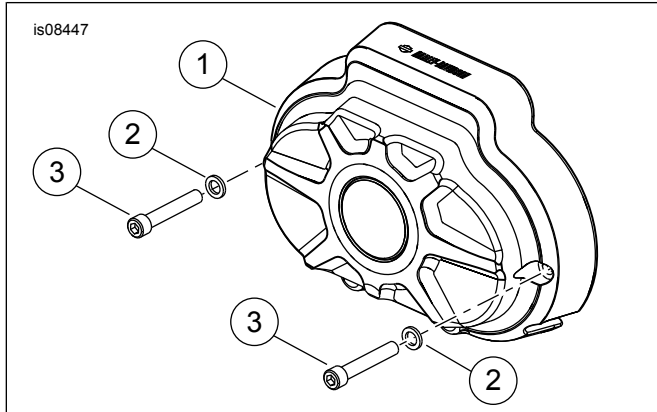


Figure 2. Burst Transmission Side Cover (for kit 34800026)

Table 1. Service Parts

Item	Description (Quantity)	Part Number
1	Outer transmission side cover	Not Sold Separately
2	Washer (2)	94062-03
3	Screw (2)	94316-91TS

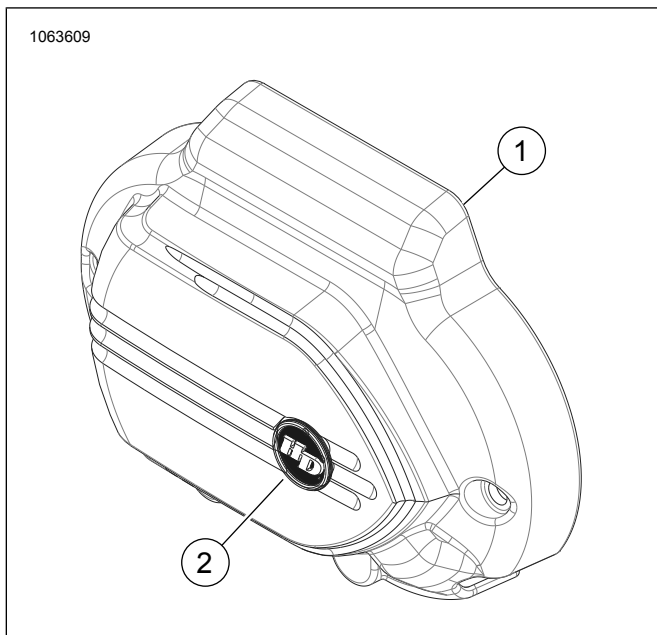


Figure 3. Transmission Side Cover

Table 2. Service Parts

Item	Description (Quantity)	Part Number
1	Outer transmission side cover	Not Sold Separately
2	Medallion	14100874

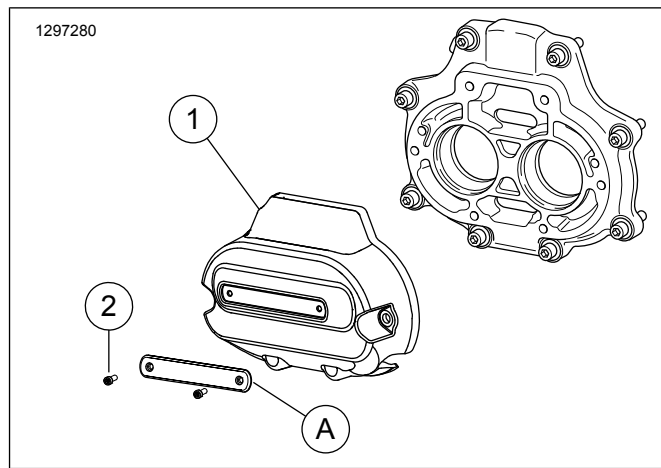


Figure 4. Dominion Transmission Side Cover

Table 3. Service Parts: Kits 25800130, 25800132

Item	Description (Quantity)	Part Number
1	Transmission Cover	Not sold separately
2	Screw (2)	10200659
Service parts required sold separately		
A	Insert:	
	Black	61400598
	Black w/HDMC	61400609
	Bronze	61400602
	Orange	61400606