



# INSTRUCTIONS

J06253

2019-08-21



## FUEL DOOR KIT

### GENERAL

#### Kit Number

61300049A, 61300050A, 61300794, 61308-09A, 61319-09A, 61335-09A, 62378-10A, 70900843

#### Models

For model fitment information, see the P&A Retail Catalog or the Parts and Accessories section of [www.harley-davidson.com](http://www.harley-davidson.com) (English only).

#### Installation Requirements

Proper installation of this kit requires Loctite® 243 Threadlocker and Sealant - Blue (Part No. 99642-97 or 11100005).

#### ⚠ WARNING

Rider and passenger safety depend upon the correct installation of this kit. If the procedure is not within your capabilities or you do not have the correct tools, have a Harley-Davidson dealer perform the installation. Improper installation of this kit could result in death or serious injury. (00308b)

#### Special Care Instructions

**Kit 70900843:** Bare Aluminum wheel Protectant Wipes Part No. 93600063 can be applied to "RideFree" text for added corrosion protection.

#### Kit Contents

This kit contains one fuel door. There are no service parts available for this kit.

### INSTALLATION

1. Open the original equipment (OE) fuel door.
2. See Figure 1. Remove the nut (3) securing the lock assembly (1) to the fuel door (2).
3. Install lock assembly to **new** fuel door. Secure with nut (3). Tighten nut finger-tight.
4. Remove the two screws (5) securing the OE fuel door to the door hinge.
5. Separate the OE fuel door from hinge. Remove fuel door from the console pins.
6. Apply a small amount of Loctite 243 (blue) to the previously removed screws. Position the **new** fuel door and door hinge over the console pins. Secure fuel door to door hinge with the screws.

7. Tighten screws (5).  
Torque: 1.8–2.3 N·m (16–20 **in-lbs**) *screw*
8. Tighten nut (3).  
Torque: 3.4–4.5 N·m (30–40 **in-lbs**) *nut*

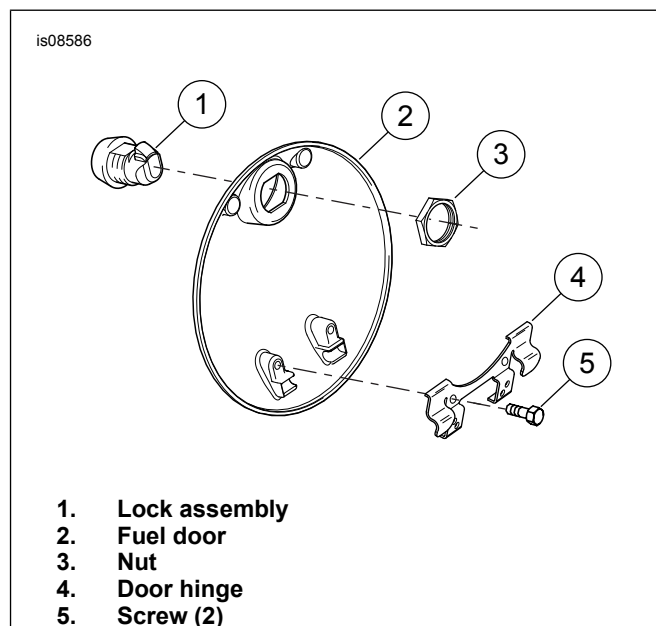


Figure 1. Fuel Door

