



INSTRUCTIONS

J06789

2019-08-21



BLACK TOURING PRIMARY KIT

Table 1. General Information

Kits	Suggested Tools	Skill Level ⁽¹⁾	Time
12600252	Safety Glasses, Torque Wrench		1 hour

(1) Tightening to torque value or other moderate tools and techniques required

KIT CONTENTS

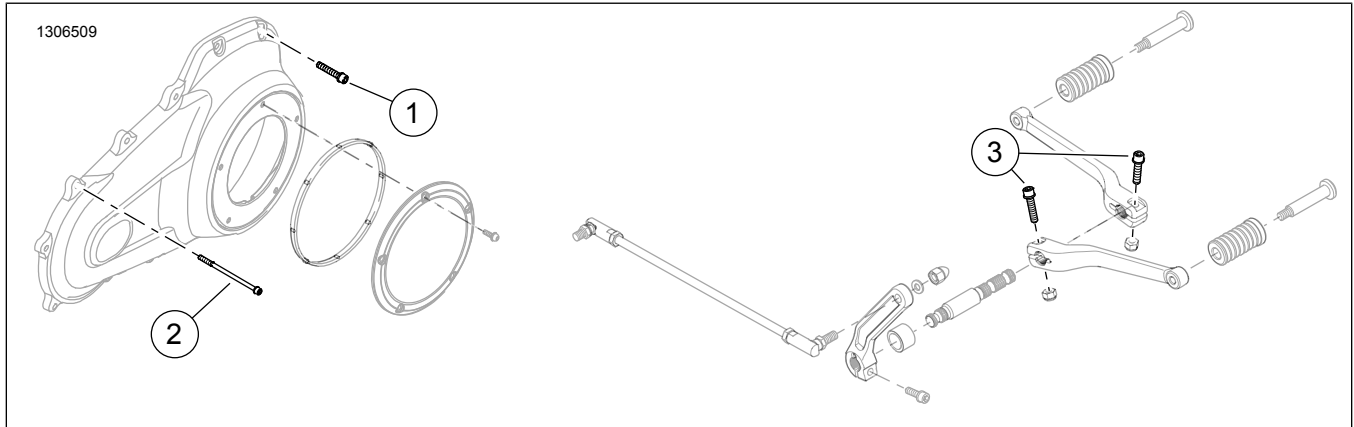


Figure 1. Kit Contents: Touring Primary Components

Table 2. Kit Contents: Touring Primary Components

<input checked="" type="checkbox"/>	Item	Qty	Description	Part No.	Replace	Notes
<input type="checkbox"/>	1	9	Screw	10200942	4813A	Follow torque specification and installation sequence per service manual
<input type="checkbox"/>	2	4	Screw	10200943	1775	Follow torque specification and installation sequence per service manual
<input type="checkbox"/>	3	2	Screw	10200945	10200350	Follow torque specification and installation sequence per service manual

NOTE

Verify all contents are present in the kit before installing or removing items from vehicle.

GENERAL

Models

For model fitment information, please see the P&A Retail Catalog or the Parts and Accessories section of www.harley-davidson.com (English only).

Ensure you are using the most current version of the instruction sheet which is available at: www.harley-davidson.com/isheets

Contact Harley-Davidson Customer Support Center at 1-800-258-2464 (U.S. only) or 1-414-343-4056.

Installation Requirements

⚠ WARNING

Rider and passenger safety depend upon the correct installation of this kit. Use the appropriate service manual procedures. If the procedure is not within your capabilities or you do not have the correct tools, have a Harley-Davidson dealer perform the installation. Improper installation of this kit could result in death or serious injury. (00333b)

INSTALLATION

Remove and Replace

NOTE

- See the service manual of the year and model vehicle that the service is being performed on for the following steps.



- *Follow torque specification and installation sequence per service manual for screws.*
 - *Remove and replace each screw one at a time to maintain initial clamp load.*
 - *Texture black touch-up pen (98605BF) or bottle (98600BF) can be used for coverage of imperfection on engine covers.*
1. Fully remove one Original Equipment (OE) screw.
 2. Install **new** black screw.
 3. Tighten screw. See service manual.
 4. Repeat steps for remaining screws. Replace screws individually following torque sequence per service manual.