



INSTRUCTIONS

J06509

2022-09-15



SOFTAIL COMPACT BACKREST PAD KITS

GENERAL

Kit Number

52300556A, 52300555A, 52300558A, 52300559A, 52300617A

Models

For model fitment information, see the P&A Retail Catalog or the Parts and Accessories section of www.harley-davidson.com (English only).

Kit Contents

See Figure 3 and Table 1.

INSTALLATION

Medallion Alignment

- Using a 50:50 isopropyl alcohol/water solution, thoroughly clean the surface of the bracket (2). Allow to dry completely. Install at room temperature.

Temperature: 10–32 °C (50–90 °F)

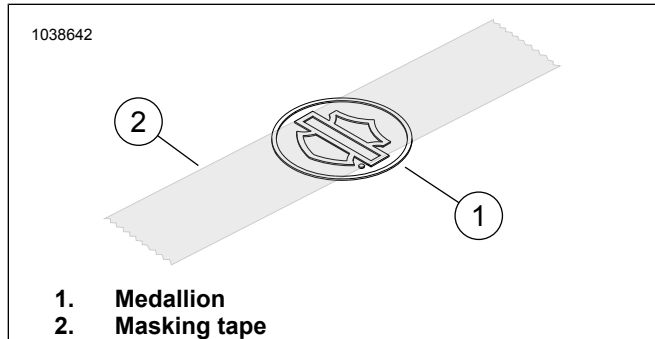


Figure 1. Apply Tape to Medallion

- See Figure 1. Place a 3-inch piece of masking tape centered over the bar and shield of the medallion.
- Pick up the medallion by the tape and remove the paper from the adhesive backing of the medallion.

NOTE

See Figure 2. The sides of the bracket (3) are not symmetrical. The width at the top is narrower than the width at the bottom.

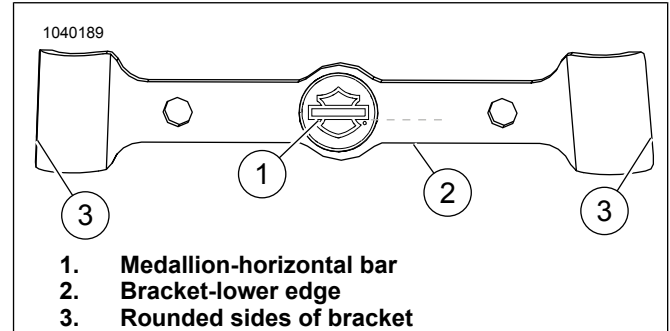


Figure 2. Medallion Alignment

NOTE

See Figure 2. Align the horizontal bar (1) on the medallion with the lower edge (2) of the bracket. These two must be parallel.

- Holding the tape, lower the medallion into the recessed area on the bracket. Apply uniform pressure for one minute.

Bracket Attachment

- See Figure 3. If necessary, cut the plastic rain seal away from the two pre-cut screw holes in the backrest pad (1) to prevent the plastic from catching in the threads.
- Position the backrest pad so that the contour in the base is aligned with the top of the sissy bar upright.
- Remove adhesive backing from left and right sides of bracket (3).

NOTE

- See Figure 2. The sides of the bracket (3) are not symmetrical. The width at the top is narrower than the width at the bottom.
- Use a mixture of 50:50 isopropyl alcohol and water solution to thoroughly clean the surface of upright (A) before installing the bracket (2). Allow to dry completely. Install at room temperature. 10–32 °C (50–90 °F)

- Place the mounting bracket against the pad so that the sissy bar upright is between the pad and the bracket.
- Position and press bracket (2) firmly onto sissybar.
- See Figure 3. Insert a screw (4) from the kit through the bracket (2), and carefully thread it 4-5 turns into the mating hole in the backrest pad. Repeat with the other screw. **DO NOT tighten a screw until both screws have been started.**

7. Once both screws have been carefully started into the two holes of the backrest pad, secure the screws. Tighten.

Torque: 6.8 N·m (60 **in-lbs**) *backrest pad screws*

SERVICE PARTS

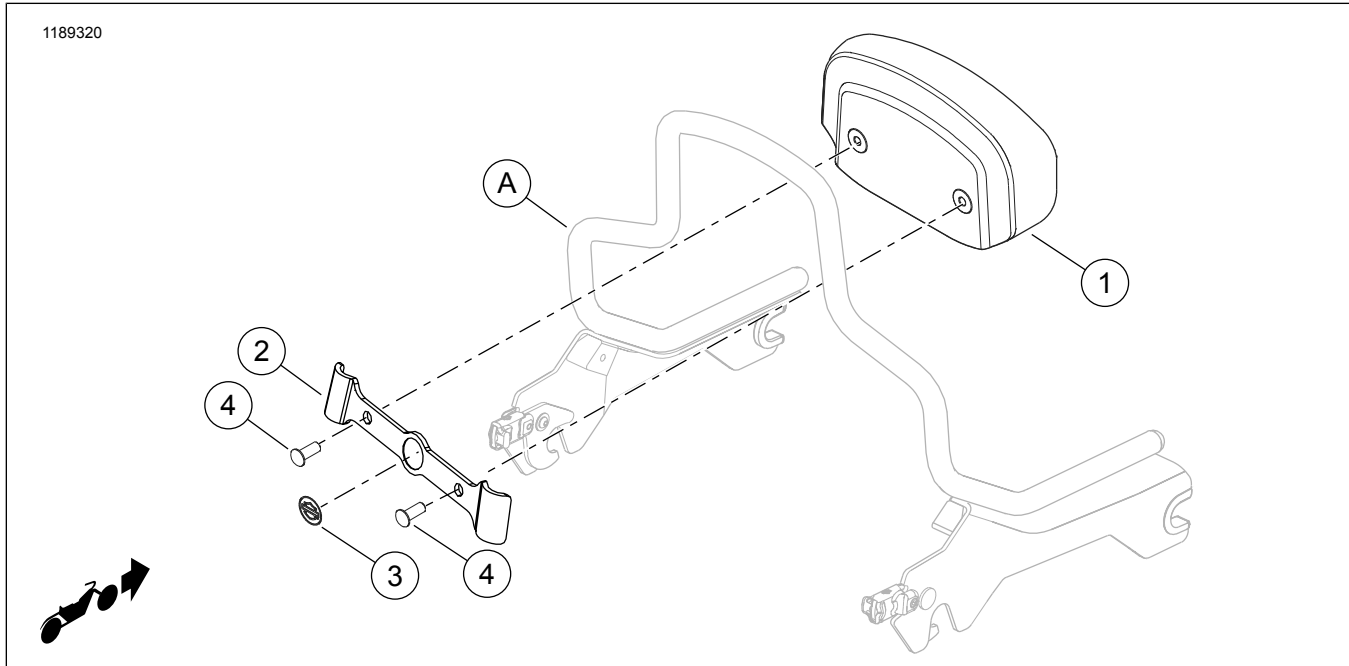


Figure 3. Service Parts: Softail Compact Backrest Pad Kits

Table 1. Service Parts Table: Softail Compact Backrest Pad Kits

Item	Description (Quantity)	Part Number
1	Backrest pad	Not sold separately
2	Mounting bracket	52300565A
3	Medallion	Not sold separately
4	Screw	94385-92T
Items not included in kit:		
A	Detachable Sissy Bar Upright	