



INSTRUCTIONS





94100015

2019-08-22



BLACK TOURING REMAINING FASTENERS

Table 1. General Information

Kits	Suggested Tools	Skill Level ⁽¹⁾	Time
12600270 (Not sold separately)	Safety Glasses, Torque Wrench	   	10 hours

(1) Special tools or techniques required for installation

KIT CONTENTS

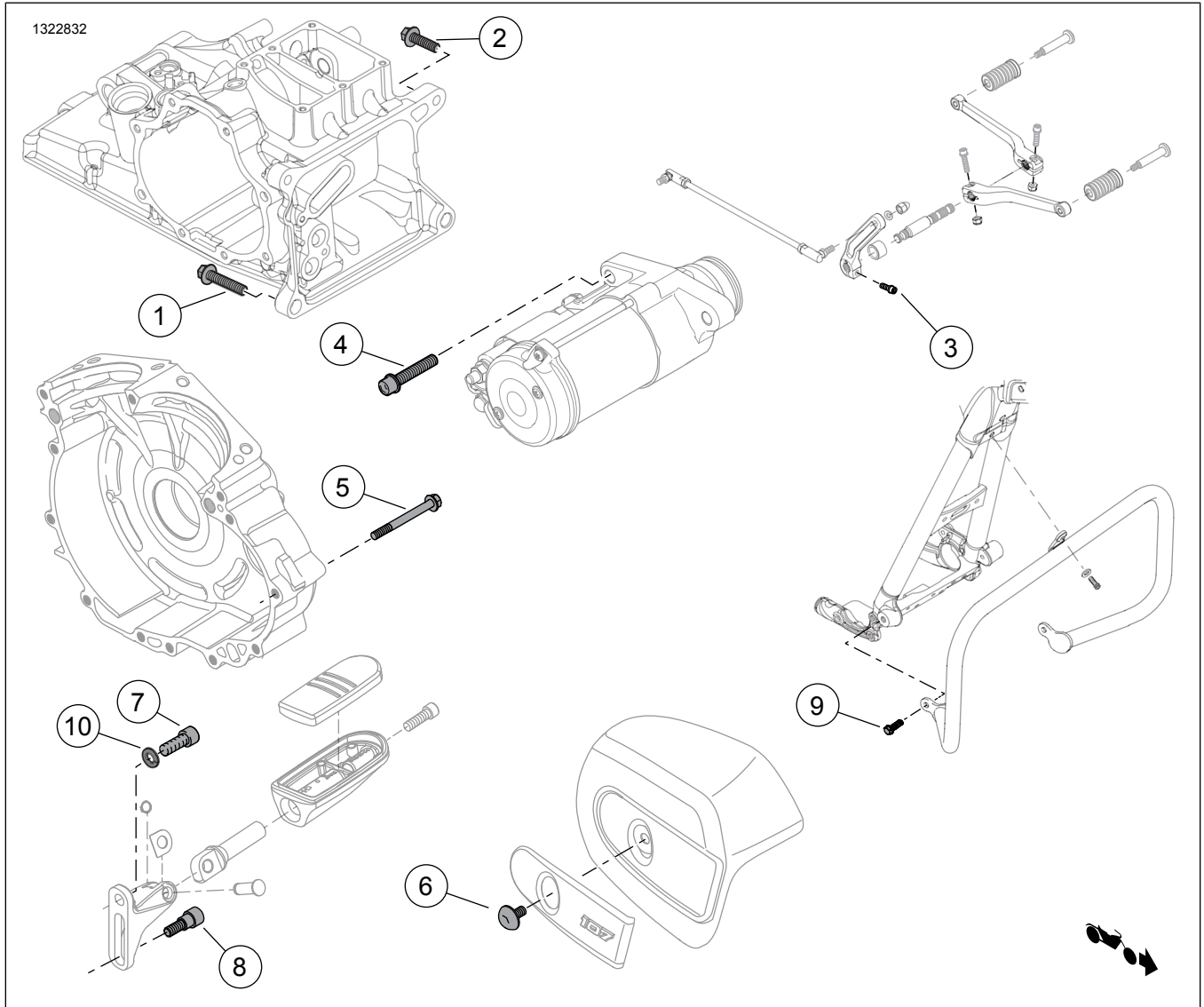


Figure 1. Kit Contents: Touring Fastener Components - Black

Table 2. Kit Contents: Touring Fastener Components - Black

<input checked="" type="checkbox"/>	Item	Qty	Description	Part No.	Replace	Notes
<input type="checkbox"/>	1	1	Screw	10200973	3699D	For right side only Follow torque specification and installation sequence per service manual
<input type="checkbox"/>	2	2	Screw	10200974	3983	Follow torque specification and installation sequence per service manual Installation requires removal of inner and outer primary
<input type="checkbox"/>	3	1	Screw	10200944	780	Follow torque specification and installation sequence per service manual
<input type="checkbox"/>	4	2	Screw	10200946	4419	Follow torque specification and installation sequence per service manual
<input type="checkbox"/>	5	4	Screw	10200961	10200343	Replace visible case screws only Follow torque specification and installation sequence per service manual Installation requires removal of inner and outer primary
<input type="checkbox"/>	6	1	Screw	10200962	29269-83A	Follow torque specification and installation sequence per service manual
<input type="checkbox"/>	7	2	Screw	10200964	3143	Follow torque specification and installation sequence per service manual
<input type="checkbox"/>	8	2	Screw	10200965	4916	Follow torque specification and installation sequence per service manual
<input type="checkbox"/>	9	2	Screw	10200966	4924	Follow torque specification and installation sequence per service manual
<input type="checkbox"/>	10	2	Lockwasher	10300198	7038	
NOTE: Screw (10200977) can be purchased separately for models equipped with Milwaukee-Eight Ventilator Air Cleaner.						

NOTE

Verify all contents are present in the kit before installing or removing items from vehicle.

GENERAL

Models

For model fitment information, please see the P&A Retail Catalog or the Parts and Accessories section of www.harley-davidson.com (English only).

Verify you are using the most current version of the instruction sheet is available at: www.harley-davidson.com/isheets

Contact Harley-Davidson Customer Support Center at 1-800-258-2464 (U.S. only) or 1-414-343-4056.

Installation Requirements

⚠ WARNING

Rider and passenger safety depend upon the correct installation of this kit. Use the appropriate service manual procedures. If the procedure is not within your capabilities or you do not have the correct tools, have a Harley-Davidson dealer perform the installation. Improper installation of this kit could result in death or serious injury. (00333b)

INSTALL

Remove and Replace

NOTE

- See the service manual of the year and model vehicle that the service is being performed on for the following steps.
- Follow torque specification and installation sequence per service manual for screws.
- Remove and replace each screw one at a time to maintain initial clamp load.
- Texture black touch-up pen (98605BF) or bottle (98600BF) can be used for coverage of imperfection on engine covers.

1. Fully remove one Original Equipment (OE) screw.
2. Install **new** black screw.
3. Tighten screw. See service manual.
4. Repeat steps for remaining screws. Replace screws individually following torque sequence per service manual.

NOTE

Items (7 and 10) to be pre-installed prior to installation.