



INSTRUCTIONS

94100085

2019-08-21



HEEL SHIFTER

GENERAL INFORMATION

Table 1. General Information

Kits	Suggested Tools	Skill Level ⁽¹⁾	Time
33600325, 33600345	Safety Glasses, Torque Wrench, Grease Pencil		30 minutes

(1) Tightening to torque value or other moderate tools and techniques required

KIT CONTENTS

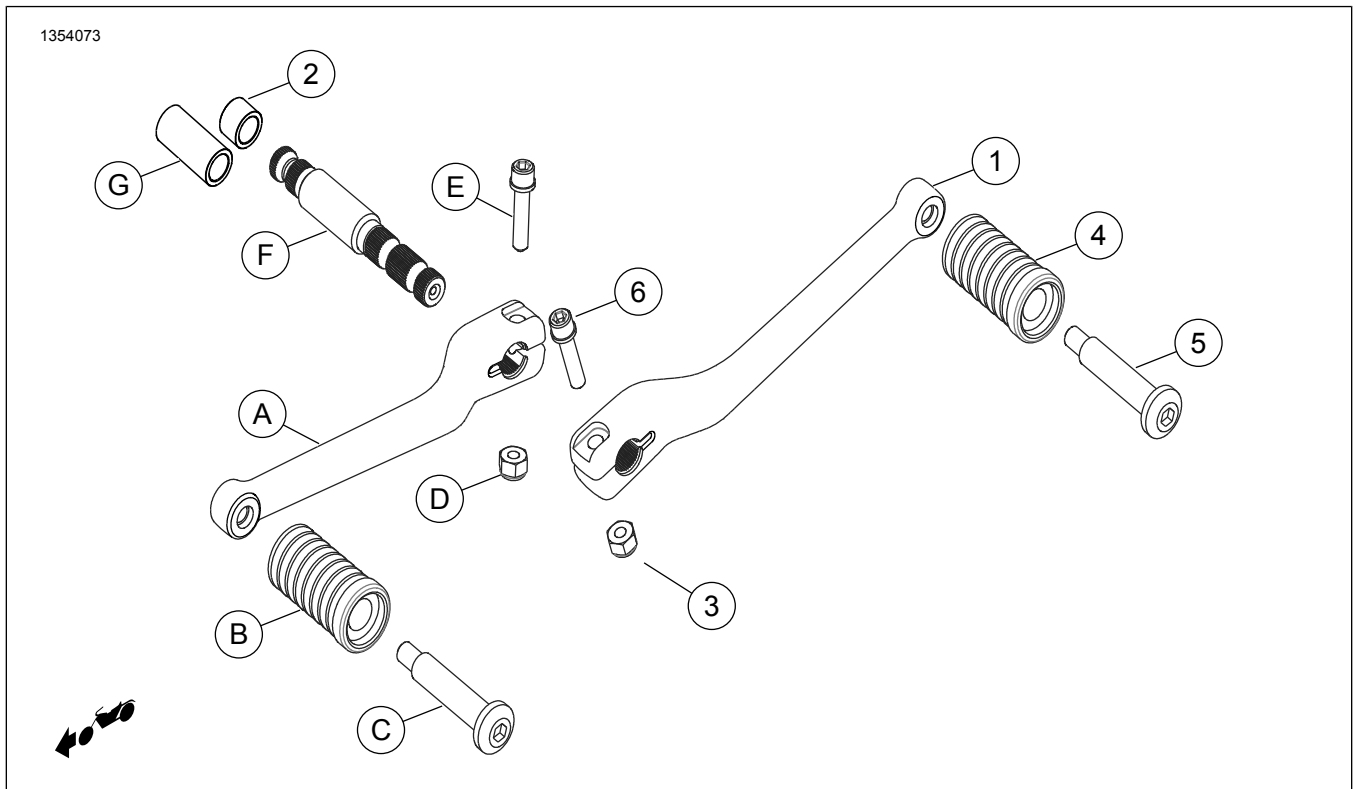


Figure 1. Kit Contents: Heel Shifter Components

Table 2. Kit Contents: Heel Shifter Components

<input checked="" type="checkbox"/>	Item	Qty	Description	Part No.	Notes
<input type="checkbox"/>	1	1	Shift lever, heel/toe, Kit 33600325	Not sold separately	
<input type="checkbox"/>		1	Shift lever, black, Kit 33600345	Not sold separately	
<input type="checkbox"/>	2	1	Spacer, shifter shaft	5817	
<input type="checkbox"/>	3	1	Nut	7686	
<input type="checkbox"/>	4	1	Rubber peg, shifter	34590-08	
<input type="checkbox"/>	5	1	Peg, stud	34591-08	12–16 N·m (9–12 ft-lbs)
<input type="checkbox"/>	6	1	Screw, SEMS	10200350	12–16 N·m (9–12 ft-lbs)
Items mentioned in text, but not included in kit					
<input checked="" type="checkbox"/>	A	1	Original Equipment (OE) Shift lever		
<input checked="" type="checkbox"/>	B	1	OE Rubber peg, shifter		
<input checked="" type="checkbox"/>	C	1	OE Peg, stud		
<input checked="" type="checkbox"/>	D	1	OE Nut		
<input checked="" type="checkbox"/>	E	1	OE Screw, SEMS		
<input checked="" type="checkbox"/>	F	1	OE Shaft, shifter		
<input checked="" type="checkbox"/>	G	1	OE Spacer, shifter shaft		

NOTE

Verify that all contents are present in the kit before installing or removing items from vehicle.

GENERAL

Models

For model fitment information, see the P&A Retail Catalog or the Parts and Accessories section of www.harley-davidson.com (English only).

Verify that the most current version of the instruction sheet is used. It is available at: www.harley-davidson.com/isheets

Contact Harley-Davidson Customer Support Center at 1-800-258-2464 (U.S. only) or 1-414-343-4056.

Installation Requirements

⚠ WARNING

Rider and passenger safety depend upon the correct installation of this kit. If the procedure is not within your capabilities or you do not have the correct tools, have a Harley-Davidson dealer perform the installation. Improper installation of this kit could result in death or serious injury. (00308b)

PREPARE

1. Mark position of toe shifter with a grease pencil before removal.

REMOVE

1. Remove toe shifter (A).
2. Retain hardware.
3. Remove OE long spacer (G).

INSTALL

1. Install short spacer (2) from kit.
2. Install toe shifter, inboard (A).
 - a. Align screw (E) to groove.
 - b. Secure screw (E) and nut (D). Tighten.
Torque: 12–16 N·m (9–12 ft-lbs)
3. Install heel shifter, outboard (1).
 - a. Align screw (6) to groove.

- b. Secure screw (6) and nut (3). Tighten.
Torque: 12–16 N·m (9–12 ft-lbs)
- 4. Install peg stud (5) through rubber peg (4). Tighten.
Torque: 12–16 N·m (9–12 ft-lbs)
- 5. Ensure there is full travel to perform upshifts and downshifts.
- 6. Levers should be approximately 160° apart.