



INSTRUCTIONS

J06777

2020-01-14



BOARD-TO-PEG CONVERSION KIT

GENERAL INFORMATION

Table 1. General Information

Kits	Suggested Tools	Skill Level ⁽¹⁾	Time
50501642	Safety Glasses, Torque Wrench, E-clip Tool		1 hour

(1) Tightening to torque value or other moderate tools and techniques required

KIT CONTENTS

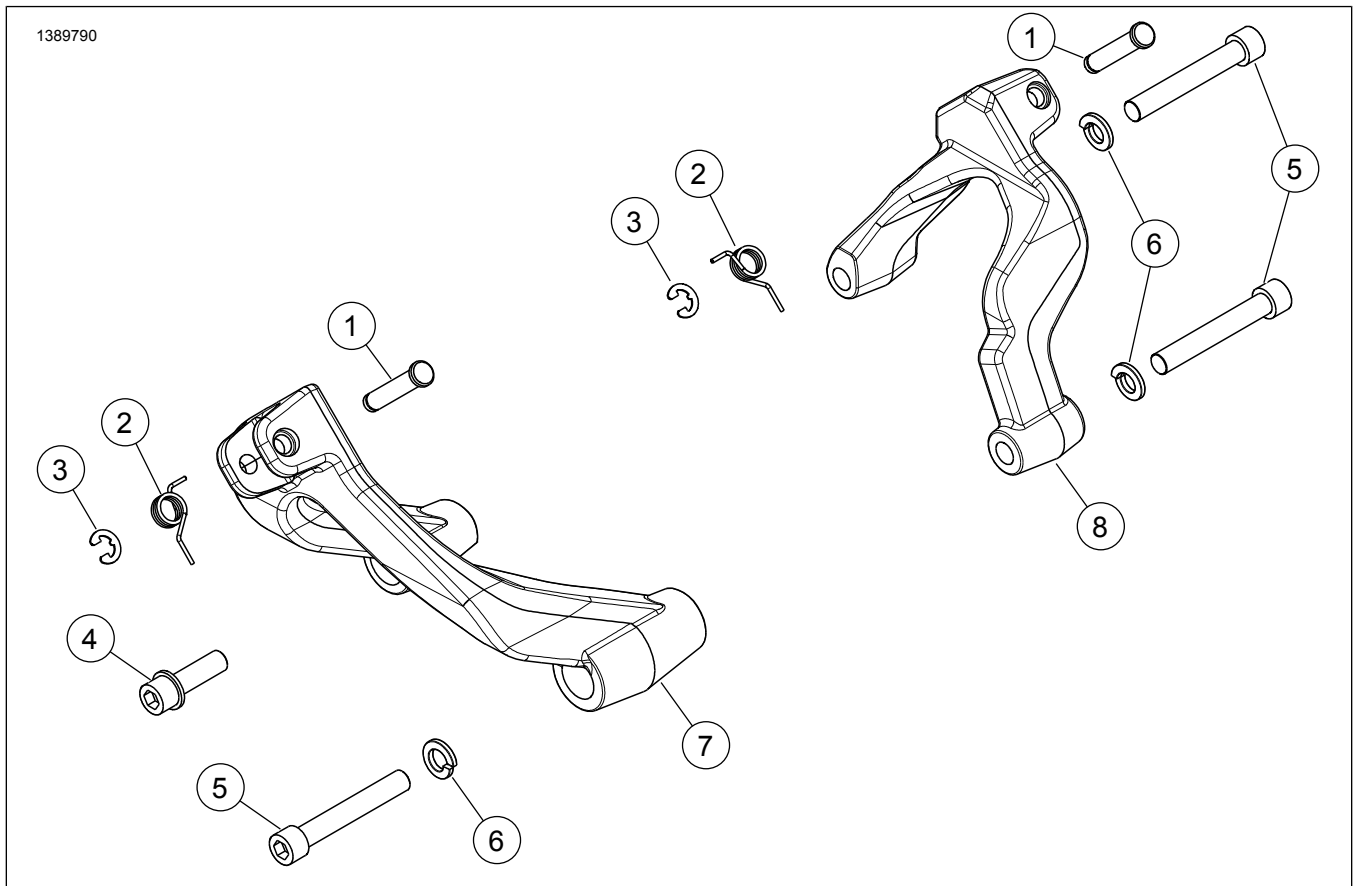


Figure 1. Kit Contents: Board-to-Peg Conversion Kit Components

Table 2. Kit Contents: Board-to-Peg Conversion Kit Components

<input checked="" type="checkbox"/>	Item	Qty	Description	Part No.	Notes
<input type="checkbox"/>	1	2	Clevis Pin	50500702	
<input type="checkbox"/>	2	2	Spring	50500703	
<input type="checkbox"/>	3	2	E-clip	50500701	
<input type="checkbox"/>	4	1	Screw, black	4688	
<input type="checkbox"/>	5	3	Screw	10200429	
<input type="checkbox"/>	6	3	Lockwasher	7038	
<input type="checkbox"/>	7	1	Bracket, right side footpeg mount, black	50501698	
<input type="checkbox"/>	8	1	Bracket, left side footpeg mount, black	50501701	

NOTE

Verify that all contents are present in the kit before installing or removing items from vehicle.

GENERAL

Models

For model fitment information, see the P&A Retail Catalog or the Parts and Accessories section of www.harley-davidson.com (English only).

Verify that the most current version of the instruction sheet is used. It is available at: www.harley-davidson.com/isheets

Contact Harley-Davidson Customer Support Center at 1-800-258-2464 (U.S. only) or 1-414-343-4056.

Installation Requirements

E-CLIP TOOL (PART NUMBER: HD-52369)

▲ WARNING

Rider and passenger safety depend upon the correct installation of this kit. Use the appropriate service manual procedures. If the procedure is not within your capabilities or you do not have the correct tools, have a Harley-Davidson dealer perform the installation. Improper installation of this kit could result in death or serious injury. (00333b)

NOTE

This instruction sheet references service manual information. A service manual for the year and model motorcycle is required for this installation and is available from:

- A Harley-Davidson dealer.
- H-D Service Information Portal, a subscription-based access available for most 2001 and newer models. For more information see *Frequently ask questions about subscriptions*.

REMOVE

1. Remove right and left side footboard and mounting brackets. See service manual.

INSTALL

RIGHT SIDE

1. See Figure 2. Position right side forward control bracket (1).
2. Install front screw (3) and lockwasher (2). Tighten.
Torque: 48.8–56.9 N·m (36–42 ft-lbs)
3. Install rear screw (4). Tighten.
Torque: 48.8–56.9 N·m (36–42 ft-lbs)
4. See Figure 4. Insert short leg of spring (1) into hole in footpeg (3).

NOTE

See Figure 3. When performing the next step, verify that the spring is positioned inside of the footpeg.

5. Align long leg of spring (1) to hole in footpeg mount and insert.
6. Rotate footpeg (3) into position in clevis and insert pin (4) through clevis, footpeg (3) and spring (1).
7. Install E-clip (2).

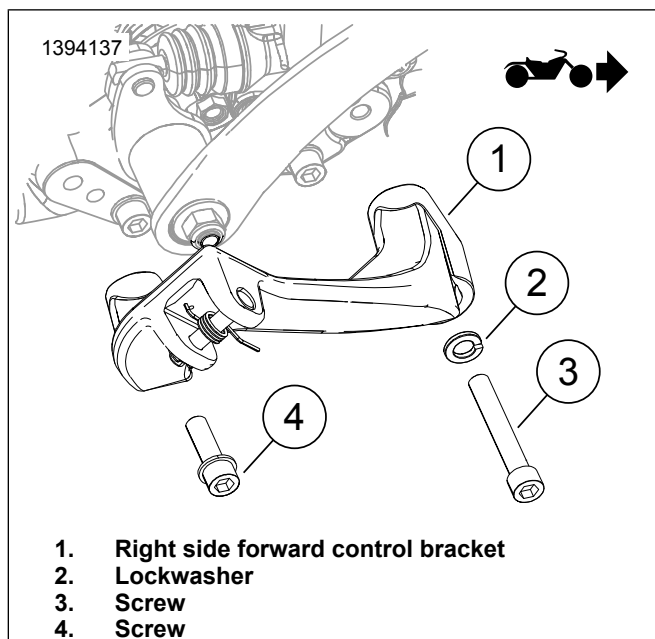


Figure 2. Right Side Forward Control

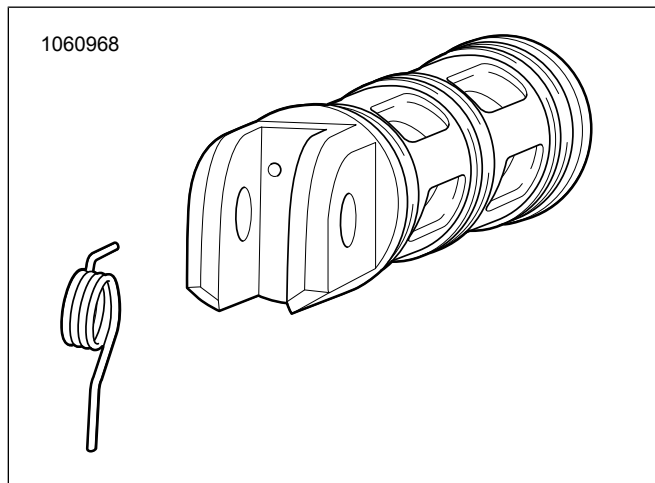


Figure 3. Torsion Spring

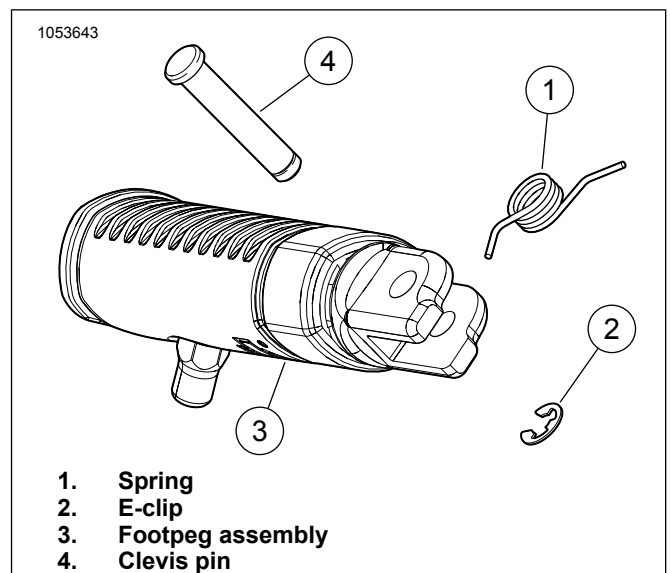


Figure 4. Rider Footpeg Torsion Spring Installation

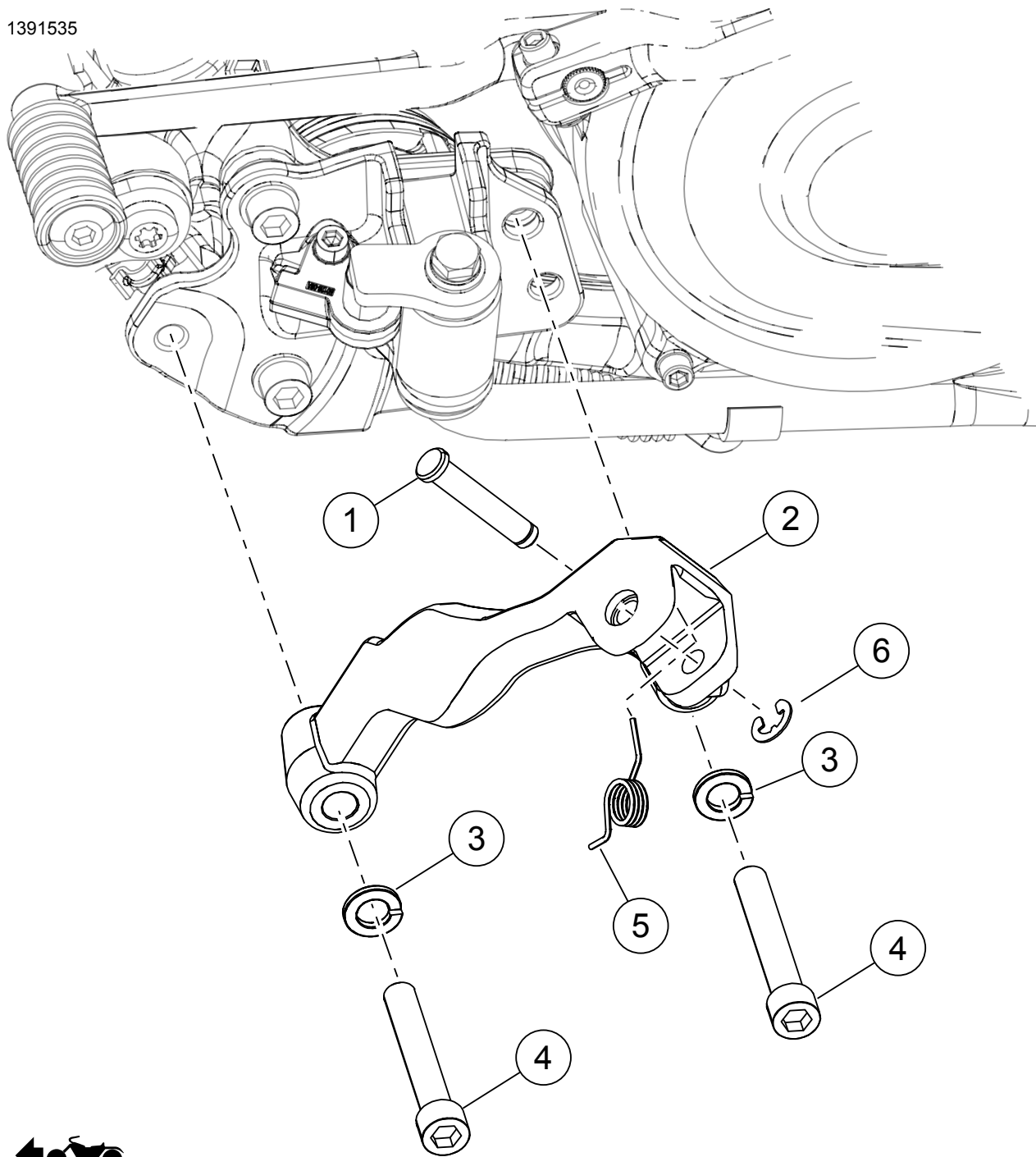
LEFT SIDE

1. See Figure 5. Position left side forward control bracket (2).
2. Install screws (4) and lockerswashers (3). Tighten.
Torque: 48.8–56.9 N·m (36–42 ft-lbs)
3. Insert short leg of spring (5) into hole in footpeg (2).

NOTE

When performing the next step, verify that the spring is positioned inside of the footpeg.

4. Align long leg of spring (5) to hole in footpeg mount and insert.
5. Rotate footpeg into position in clevis and insert pin (1) through clevis, footpeg and spring (5).
6. Install E-clip (6).



- 1. Clevis pin
- 2. Bracket, left side footpeg mount
- 3. Lockwashers

- 4. Screws
- 5. Spring
- 6. E-clip

Figure 5. Left Side Forward Control