



# INSTRUCTIONS

94100099

2020-01-14



## GEAR SHIFT LEVER

### GENERAL INFORMATION

Table 1. General Information

Kits	Suggested Tools	Skill Level <sup>(1)</sup>	Time
33600318	Safety Glasses, Torque Wrench		1 hour
<i>(1) Tightening to torque value or other moderate tools and techniques required</i>			

### KIT CONTENTS

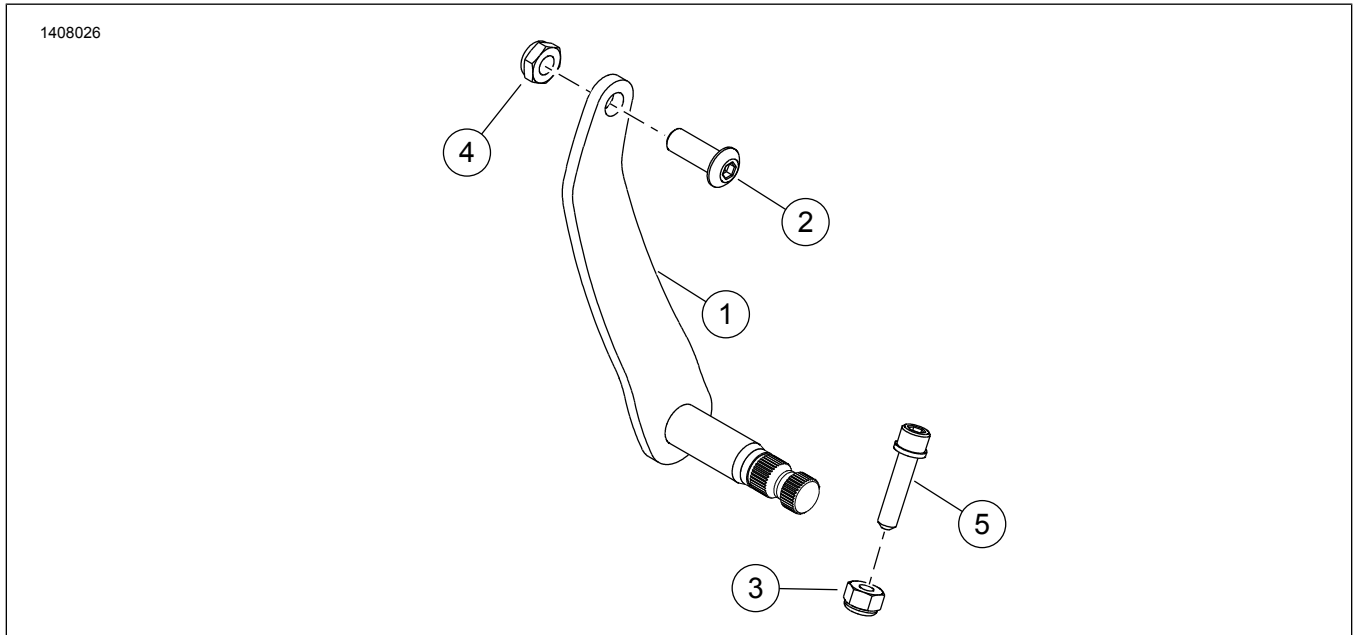


Figure 1. Kit Contents: Rider Backrest Components

Table 2. Kit Contents: Rider Backrest Components

<input checked="" type="checkbox"/>	Item	Qty	Description	Part No.	Notes
<input type="checkbox"/>	1	1	Lever	Not sold separately	
<input type="checkbox"/>	2	1	Screw	4387	
<input type="checkbox"/>	3	1	Nut	7686	
<input type="checkbox"/>	4	1	Nut	7727	
<input type="checkbox"/>	5	1	Screw	10200350	

#### NOTE

Verify all contents are present in the kit before installing or removing items from vehicle.

## GENERAL

### Models

For model fitment information, see the P&A Retail Catalog or the Parts and Accessories section of [www.harley-davidson.com](http://www.harley-davidson.com) (English only).

Verify that the most current version of the instruction sheet is used. It is available at: [www.harley-davidson.com/isheets](http://www.harley-davidson.com/isheets)

Contact Harley-Davidson Customer Support Center at 1-800-258-2464 (U.S. only) or 1-414-343-4056.

### Installation Requirements

#### ▲ WARNING

Rider and passenger safety depend upon the correct installation of this kit. Use the appropriate service manual procedures. If the procedure is not within your capabilities or you do not have the correct tools, have a Harley-Davidson dealer perform the installation. Improper installation of this kit could result in death or serious injury. (00333b)

#### NOTE

This instruction sheet references service manual information. A service manual for the year and model motorcycle is required for this installation and is available from:

- A Harley-Davidson dealer.
- H-D Service Information Portal, a subscription-based access available for most 2001 and newer models. For more information see *Frequently ask questions about subscriptions*.

## REMOVE

1. See Figure 2. Remove screw to free linkage from front shifter rod lever (1).
2. Mark position of foot shift lever in relation to shaft.
3. **Forward Foot Control Models:**
  - a. Remove pinch screw (7) and nut (8).
  - b. Remove foot shift lever assembly.
  - c. Remove shifter rod lever and shaft.

## INSTALL

1. See Figure 2.

#### Forward Foot Control Models:

- a. Install shifter rod lever (1) and shaft.
- b. Install foot shift lever, aligning to marks made during removal.
- c. Install pinch screw (7) and nut (8). Tighten.  
Torque: 12.2–16.3 N·m (9.0–12.0 ft-lbs)
- d. Connect shifter rod. Tighten.  
Torque: 13.6–19 N·m (120.4–168.2 in-lbs)

2. Secure linkage to shifter rod lever (1). Tighten.  
Torque: 13.6–19 N·m (120.4–168.2 in-lbs)
3. Verify shifter rod operation.

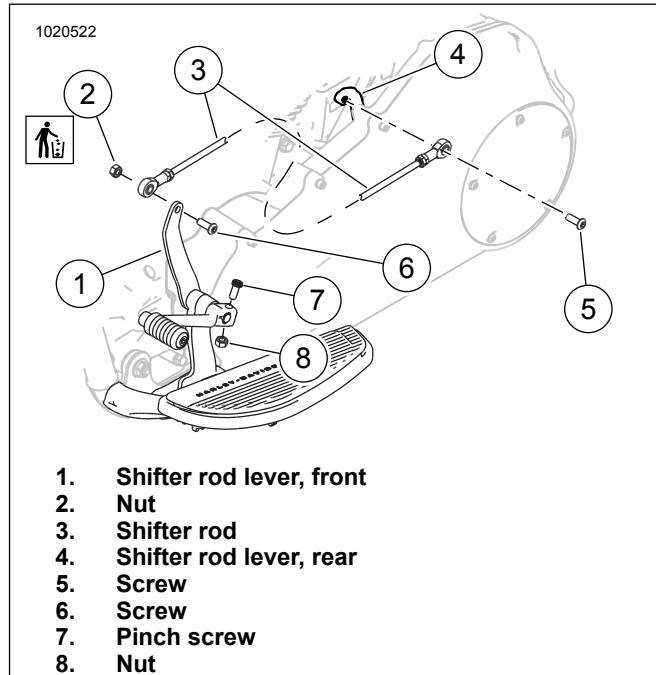


Figure 2. Shift Linkage: Forward Control Models