



INSTRUCTIONS

94100269

2021-02-04



FAIRING SPEAKER HARNESS INSTALL KIT (PN 76001100)

GENERAL

NOTE

The newly installed audio system and speakers will not play audio unless it is configured using the Harley-Davidson mobile app or by an authorized Harley-Davidson dealership.

Table 1.

| Harley-Davidson Audio Powered by Rockford Fosgate® | |
|--|---------|
| Kit | QR Code |
| 76001100 | N/A |

NOTE

The various generations of speakers, amplifiers and wiring for Harley-Davidson vehicles were not designed or tested to work together. Please consult your dealership to ensure optimal performance and compatibility.

Models

For model fitment information, see the P&A retail catalog or the Parts and Accessories section of www.harley-davidson.com (English only).

Ensure you are using the most current version of the instruction sheet which is available at: h-d.com/isheets

Contact Harley-Davidson Customer Support Center at 1-800-258-2464 (U.S. only) or 1-414-343-4056.

Installation Requirements

Download Harley-Davidson mobile app.

This harness is for use on **2014 and later CVO FLHTKSE** and **2015-2016 FLTRUSE** models Harley-Davidson audio systems.

These items are available at your Harley-Davidson dealership.

- Separate purchase of Harley-Davidson Primary Amplifier and Dongle Kit (Part No. 76000997) is required for this installation.
- Separate purchase of Harley-Davidson Primary Amplifier Installation Kit (Part No. 76000974 or 76001045) is required for this installation.
- Separate purchase of Harley-Davidson Stage 1 or 2 Speaker Kit (Part No. 76000980, 76000981, 76000982 or 76000983) is required for this installation.

⚠ WARNING

Rider and passenger safety depend upon the correct installation of this kit. Use the appropriate service manual procedures. If the procedure is not within your capabilities or you do not have the correct tools, have a Harley-Davidson dealer perform the installation. Improper installation of this kit could result in death or serious injury. (00333b)

Installation by a technician at a Harley-Davidson dealership is recommended.

Kit Contents

See Figure 8 and Table 2.

PREPARE

⚠ WARNING

To prevent accidental vehicle start-up, which could cause death or serious injury, remove main fuse before proceeding. (00251b)

NOTE

This instruction sheet references service manual information. A service manual for this year/model motorcycle is required for this installation. One is available from a Harley-Davidson dealer.

1. Remove left and right saddlebags.
2. Remove left and right side covers.
3. Remove main fuse.

NOTE

Models with security: Disable security system.

4. Remove seat.
5. Remove fuel tank.
6. Remove wire trough cover.
7. Remove windshield.
8. Remove outer fairing.
 - a. For fixed fairing models, remove headlamp.

INSTALL

1. Connect fairing speaker harness.
 - a. See Figure 2. Disconnect the amplifier harness connector (1).
 - b. Remove stock amplifier and amplifier mounting brackets.
 - c. **Fork mounted fairing models:** Install the four screws back into the top of the radio.

- d. Connect amplifier connector (1) to amplifier bypass connector (2).
 - e. Route harness through inner fairing near the steer head.
2. Route harness through backbone wire trough.
 3. Route [349A] toward right side cover and primary amplifier external harness.
 4. Connect [349A] to [349B] of the primary amplifier external harness.

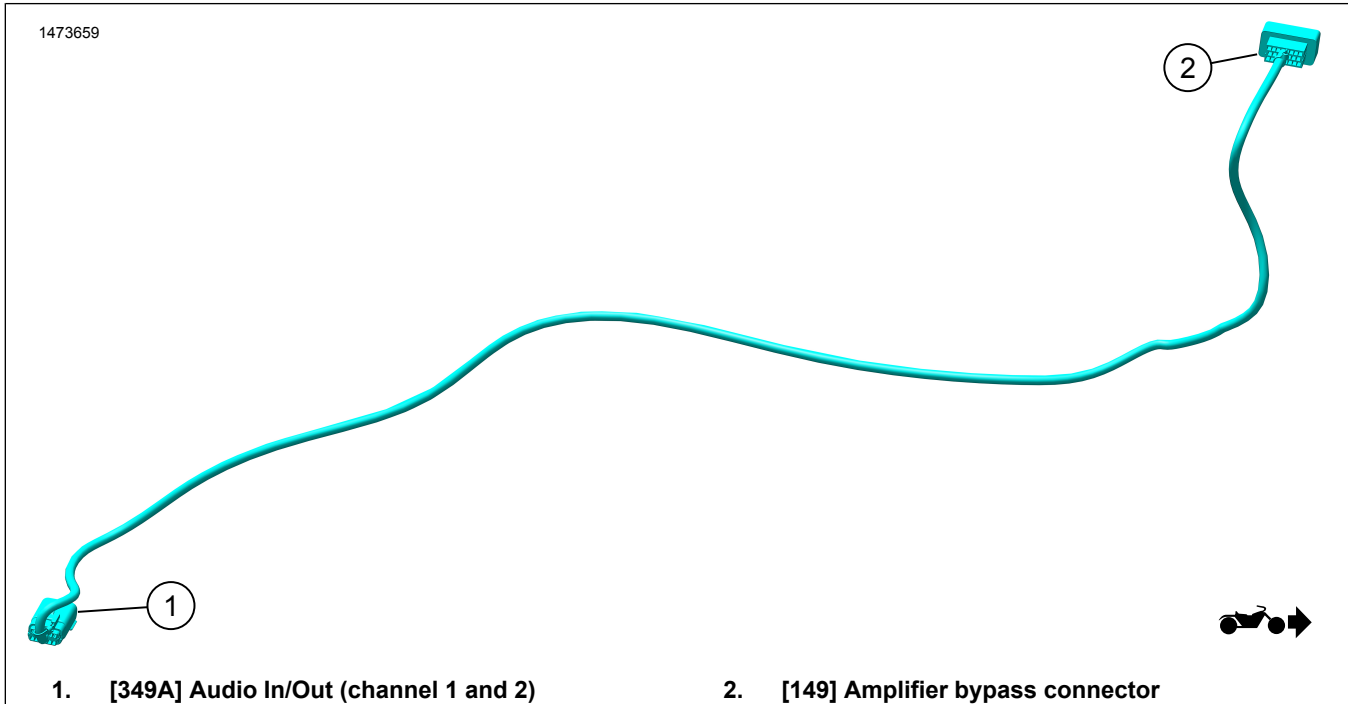


Figure 1. Fairing Speaker Harness

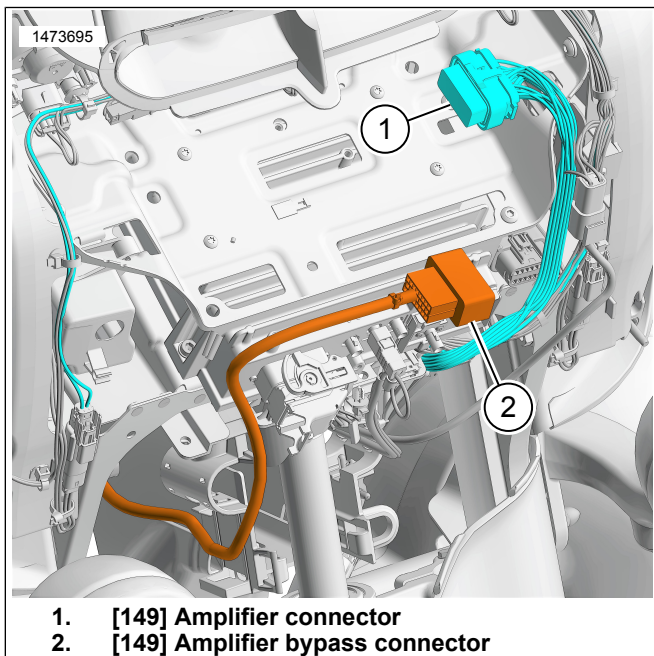


Figure 2. Fork Mounted Fairing Shown, Fixed Fairing Similar

COMPLETE

NOTE

To prevent possible damage to the sound system, verify that the ignition is OFF before installing the main fuse.

1. Install main fuse.

NOTE

Before installing outer fairing, check that speakers are operating correctly. Understand that buzzing, squeaks and rattles may be heard until outer fairing is installed.

Turn ignition ON, but do not start the vehicle.

3. Make sure that all speakers are working and front/rear fader function is operating correctly. If not, check speaker wiring.
4. Install outer fairing.
5. Install windshield.

6. Install wire trough cover.
7. Install fuel tank.
8. Install seat.
9. Install left and right side covers.
10. Install left and right saddlebags.

APP SETUP

1. See Figure 3. Accessing your audio system.
 - a. Pair device (1) to system.
 - b. Access app menus (2) to setup vehicle sound system.

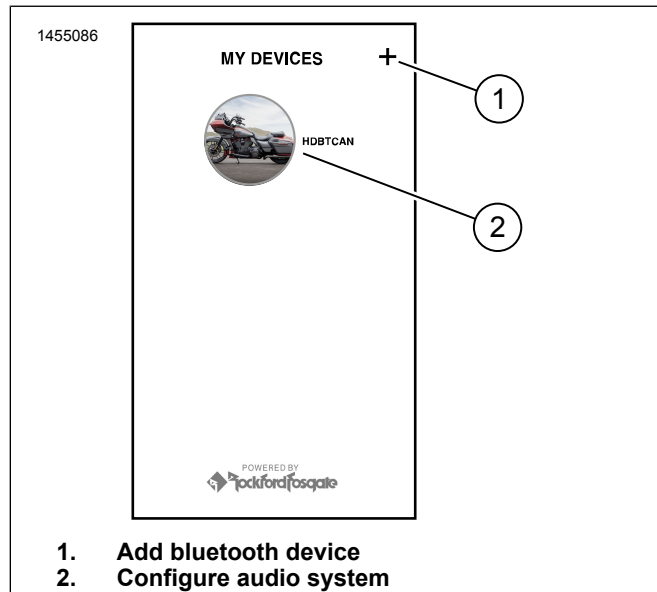


Figure 3. System Access

2. See Figure 4. Main menu screen.
 - a. Main menu icon (1).
 - b. Reset or change security personal identification number (PIN) (2).
 - c. Edit and rename your system (3).
 - d. Customize main menu with your bike picture (4).
 - e. Bluetooth connection indicator. Slash through symbol indicates: Not Connected (5).

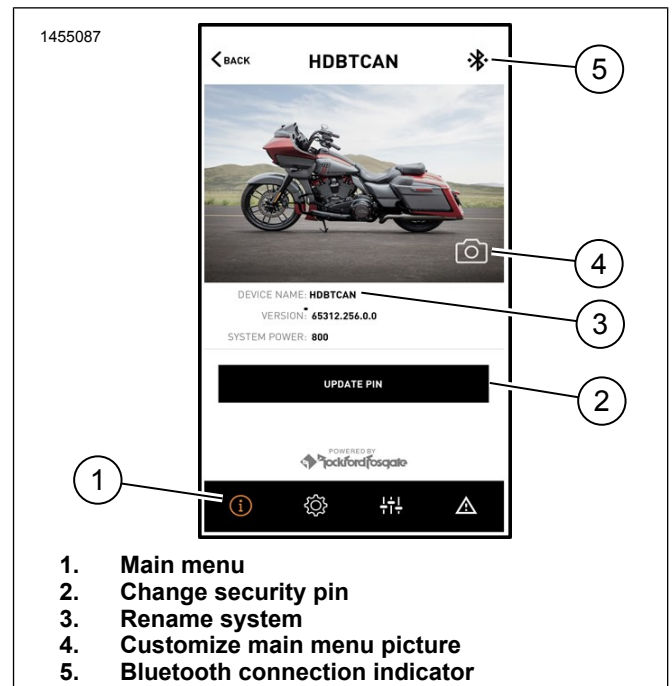


Figure 4. Main Menu

3. See Figure 5. Setup menu screen.
 - a. Setup menu icon (1).
 - b. Use to scan QR code (2) on iSheet.
 - c. Manual setup for Stage 1 or 2 speakers, speaker location and white noise to assign speaker locations.

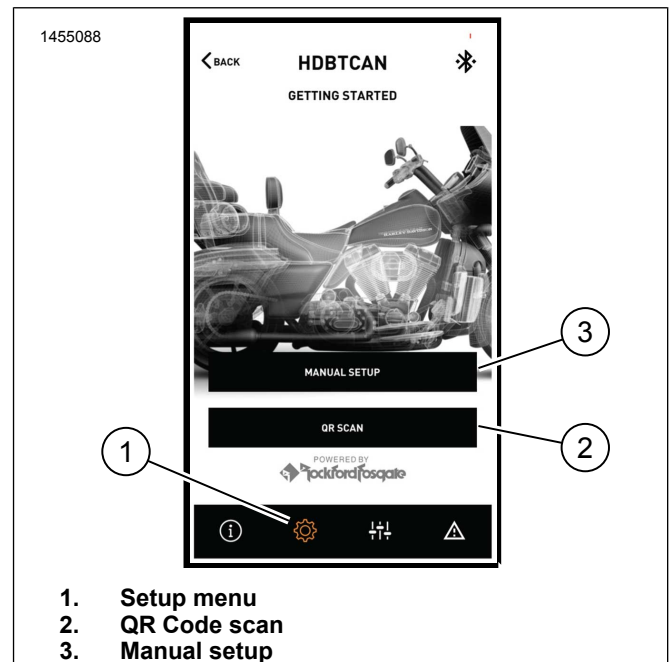


Figure 5. Setup Menu

4. See Figure 6. Equalizer setup screen.
 - a. Equalizer setup icon (1)
 - b. Tune 7-Band equalizer (2) frequencies.

c. Custom or preset equalizer selections (3).

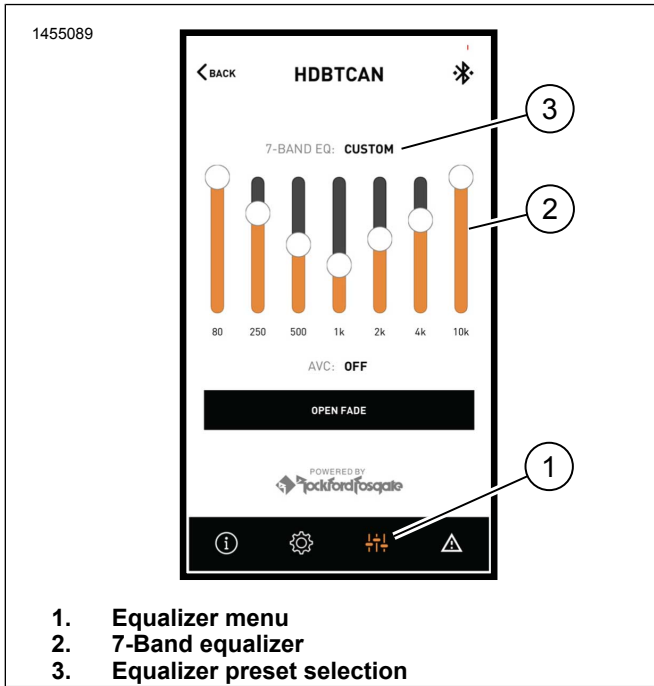


Figure 6. Equalizer Menu

5. See Figure 7. Diagnostic menu screen.

- Diagnostic menu icon (1) displays sound system status.
- Open the speaker testing screen (2).
- Refreshes speaker and amplifier status (3) after component repair.
- Select speaker for white noise (4) test and functionality.
- Return to diagnostic menu screen (5).

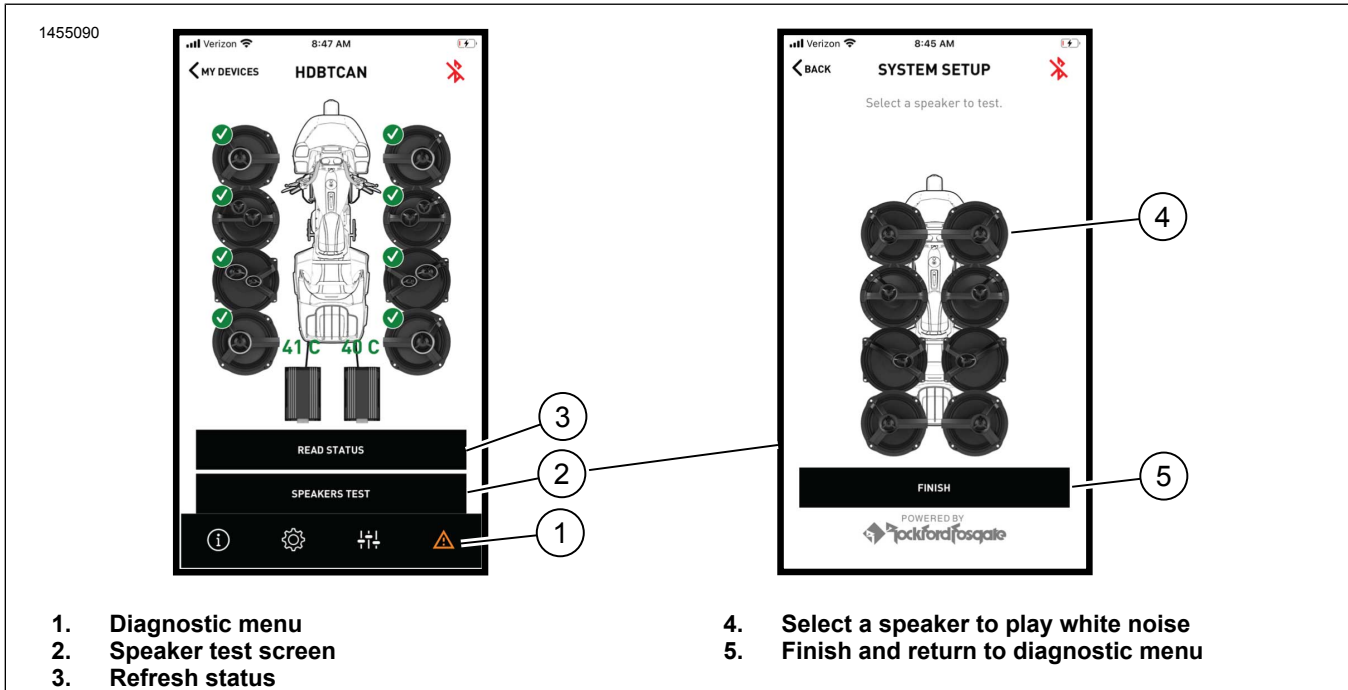


Figure 7. Diagnostic Menu

SERVICE PARTS

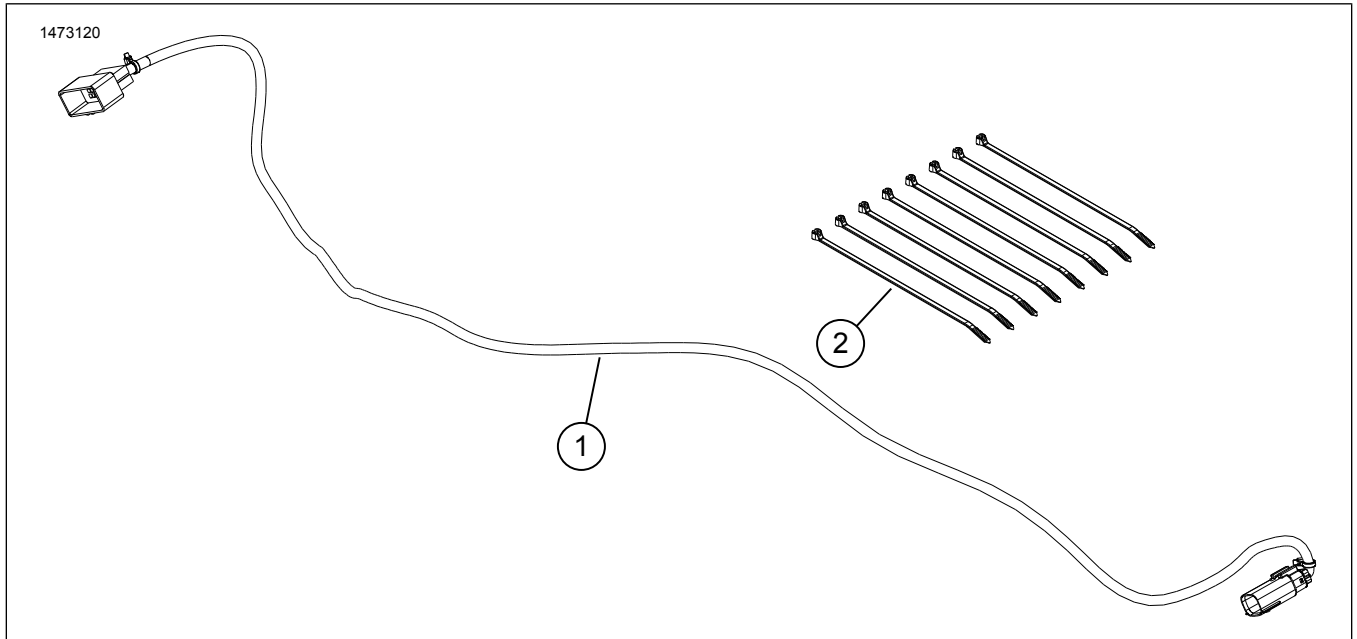


Figure 8. Service Parts, Amplifier Installation Kit

Table 2. Service Parts

| Item | Description (Quantity) | Part Number |
|------|------------------------|---------------------|
| 1 | Fairing wire harness | Not sold separately |
| 2 | Cable strap (8) | 10006 |