



# INSTRUCTIONS

94100201

2021-09-15



## ROUND STYLE LOCKING FUEL CAP

### GENERAL INFORMATION

Table 1. General Information

Kits	Suggested Tools	Skill Level <sup>(1)</sup>
61100188	Safety Glasses, Torque Wrench	
<i>(1) Tightening to torque value or other moderate tools and techniques required</i>		

### KIT CONTENTS

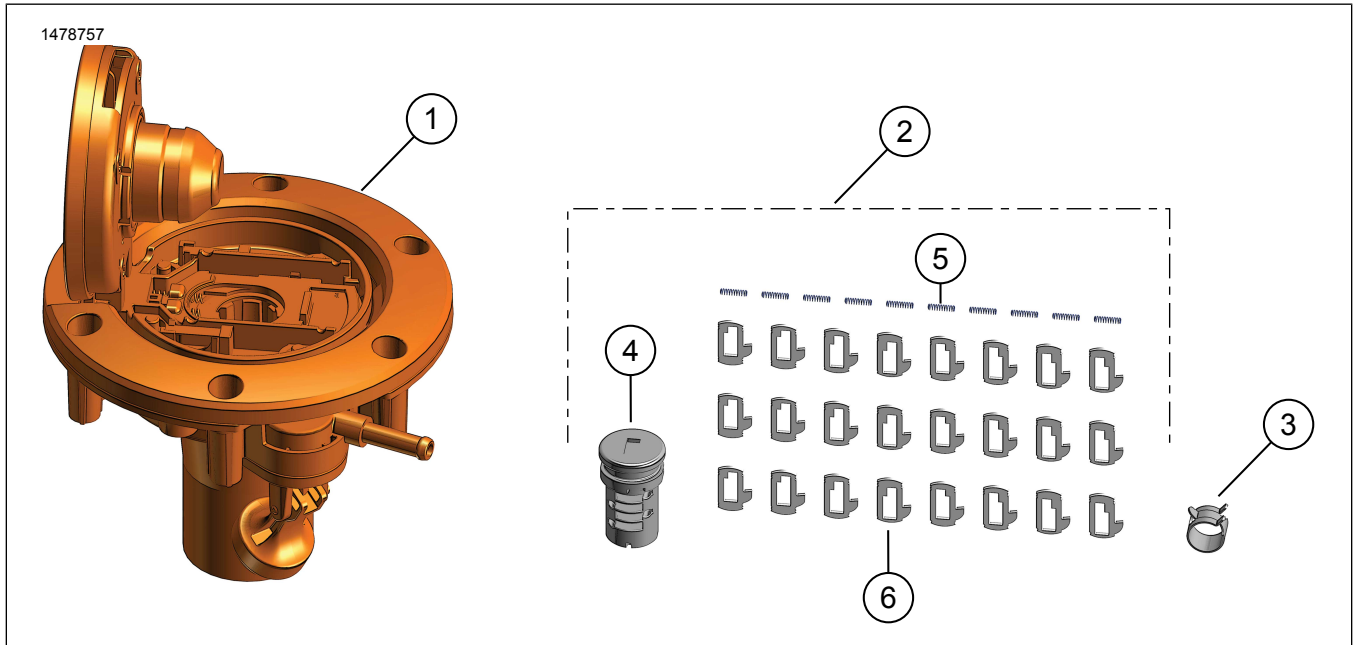


Figure 1. Kit Contents: Round Style Locking Fuel Cap

**Table 2. Kit Contents: Round Style Locking Fuel Cap**

Verify that all contents are present in the kit before installing or removing items from vehicle.					
Item	Qty	Description	Part No.	Notes	
<input checked="" type="checkbox"/>					
<input type="checkbox"/>	1	Fuel tank locking filler assembly w/gasket	61000616		
<input type="checkbox"/>	2	Lockset, unkeyed (Includes items 4-7)	Not sold separately		
<input type="checkbox"/>	3	Clamp, hose	29379-08		
<input type="checkbox"/>	4	Cylinder sub-assembly	Not sold separately		
<input type="checkbox"/>	5	Tumbler spring	Not sold separately		
<input type="checkbox"/>	6	Tumbler	Not sold separately		
<input type="checkbox"/>	7	Grease (not shown)	Not sold separately	<b>Kluber Lubrication:</b> <ul style="list-style-type: none"> <li>• CENTOPLEX 1 DL 1 cc/1 mL/0.03 oz</li> <li>• Observe good industrial hygiene practices</li> <li>• Wash hands after handling</li> <li>• Keep out of eyes</li> <li>• <b>Chemical Nature:</b> Mineral oil, lithium calcium soap</li> </ul>	

## GENERAL

### Models

For model fitment information, see the Parts and Accessories (P&A) Retail Catalog or the Parts and Accessories section of [www.harley-davidson.com](http://www.harley-davidson.com).

Verify that the most current version of the instruction sheet is used. It is available at: [h-d.com/isheets](http://h-d.com/isheets)

Contact Harley-Davidson Customer Support Center at 1-800-258-2464 (U.S. only) or 1-414-343-4056.

#### ⚠ WARNING

Keep gasoline away from ignition sources. Gasoline is extremely flammable and highly explosive and, if ignited, could result in death or serious injury. (00634b)

### Installation Requirements

#### ⚠ WARNING

Rider and passenger safety depend upon the correct installation of this kit. Use the appropriate service manual procedures. If the procedure is not within your capabilities or you do not have the correct tools, have a Harley-Davidson dealer perform the installation. Improper installation of this kit could result in death or serious injury. (00333b)

#### NOTE

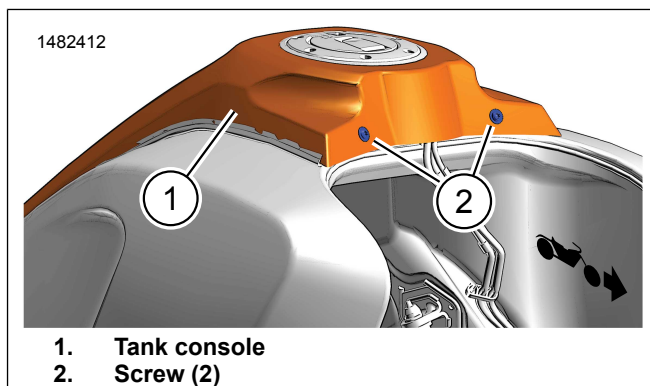
This instruction sheet references service manual information. A service manual for the year and model motorcycle is required for this installation and is available from:

- A Harley-Davidson dealer.

- *H-D Service Information Portal, a subscription-based access available for most 2001 and newer models. For more information see Frequently ask questions about subscriptions.*

## REMOVE

- See Figure 2. Remove tank console (1).
  - Remove screws (2).
- See Figure 3. Remove existing fuel cap.
  - Cut hose clamp that secures vapor hoses to fuel cap.
  - Disconnect vapor hoses (3).
  - Remove screws (1). Retain.



**Figure 2. Tank Console**

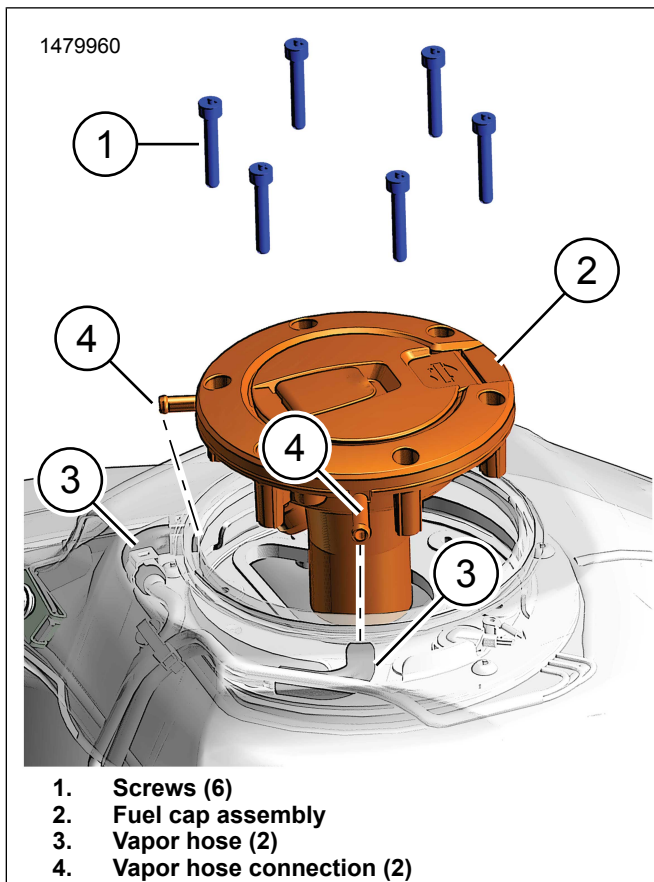


Figure 3. Fuel Cap Assembly Removal

## INSTALL

### Setting Key Lock

- See Figure 4. On Original Equipment (OE) vehicle key, determine cut depth at each key station.
- Write values into Table 3.
- Refer to Table 3. Write key depth codes from Figure 4 based on cut depths measured.

Table 3. Key Lock Instructions

Station	Side	Measured Depth	Depth Code	Tumbler No.
1	A			1__
2	B			2__
3	B			2__
4	A			1__
5	A			1__
6	B			2__
7	B			2__
8	A			1__

#### NOTE

Cut depth codes to be second digit of tumble numbers.

- Stations 8,5,4,1:** These stations use tumbler #11-14.
  - Stations 7,6,3,2:** These stations use tumbler #21-24.
- See Figure 5. Install tumbler springs (5), see Figure 1, into holes at stations 8,5,4 and 1 on side (A) of cylinder sub-assembly.

#### NOTE

Place a piece of tape or hold installed tumbler springs and tumblers with a finger to hold spring and tumblers in place before installation of springs and tumbler on opposite side of cylinder sub-assembly.

- See Figure 5. Install tumblers (6), see Figure 1, #11-14 in stations 8,5,4 and 1 per tumble numbers determined in Table 3.
- See Figure 5. Install tumbler springs (5), see Figure 1, into holes at stations 2,3,6 and 7 on side (B) of cylinder sub-assembly.
- See Figure 5. Install tumblers (6), see Figure 1, #21-24 in stations 2,3,6 and 7 per tumble numbers determined in Table 3.
- See Figure 6. While holding tumblers fully in place, install key in assembled cylinder sub-assembly.
- Verify that all tumblers are assembled correctly.

#### NOTE

When key is fully inserted, all eight tumblers should be flush with outer diameter of cylinder. Note tumblers that are not flush. If tumbler is high on the spring side, replace with next higher number tumbler. If tumbler is high on the opposite side, replace with next lower number tumbler.

- Apply an even layer of grease around outer diameter of tumbler area.

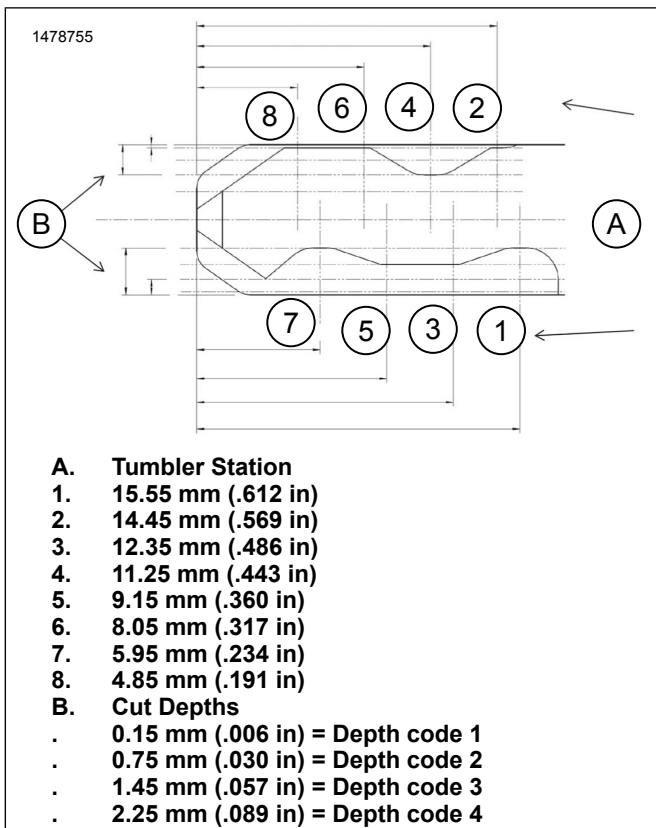


Figure 4. Key Code Diagram

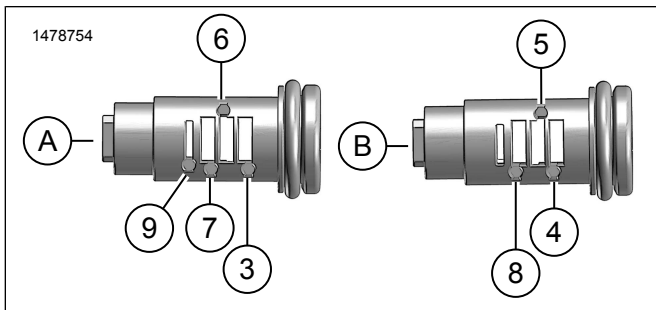


Figure 5. Spring and Tumbler Install Locations

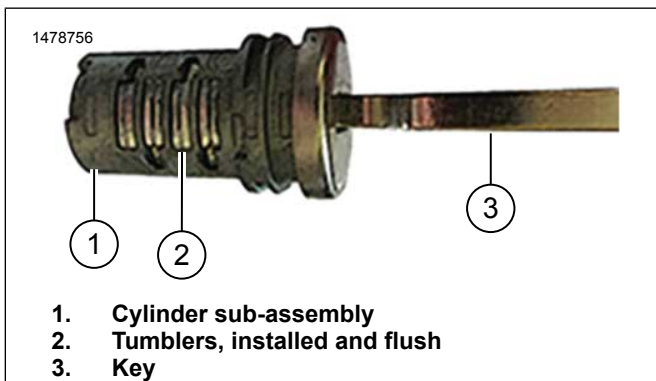


Figure 6. Assembled Lockset

## Install Locking Fuel Cap

1. See Figure 7. If cap is latched before lock cylinder is installed, use screwdriver or other tool to press slider inside cap's lock hole while pulling cap up.

2. See Figure 8. Use screwdriver or other tool, press in locking tab (1) fully in order to properly seat lock cylinder.
3. See Figure 9. Orientate lock cylinder notch (1).
4. Push cylinder fully into fuel cap.
5. Release locking tab.
6. While continuing to push cylinder in, turn key back and forth slightly until locking tab fully extends and cylinder is latched.

### NOTE

When turning key actuates the locking tab, it is acceptable to close cap and remove key.

7. See Figure 10. Install round locking fuel cap assembly (2) with OE screws (1).
8. See Figure 10. Torque screw in sequence. Tighten.  
Torque: 2.8–3.3 N·m (25–29 in-lbs)
9. See Figure 1. Install hose clamp (3) on vapor hose where OE clamp was removed earlier.
10. See Figure 3. Connect vapor hoses (3).
11. Install tank console.
  - a. Insert tab into slot at rear of fuel tank.
  - b. Secure with OE screws. Tighten.  
Torque: 3–4 N·m (27–35 in-lbs)

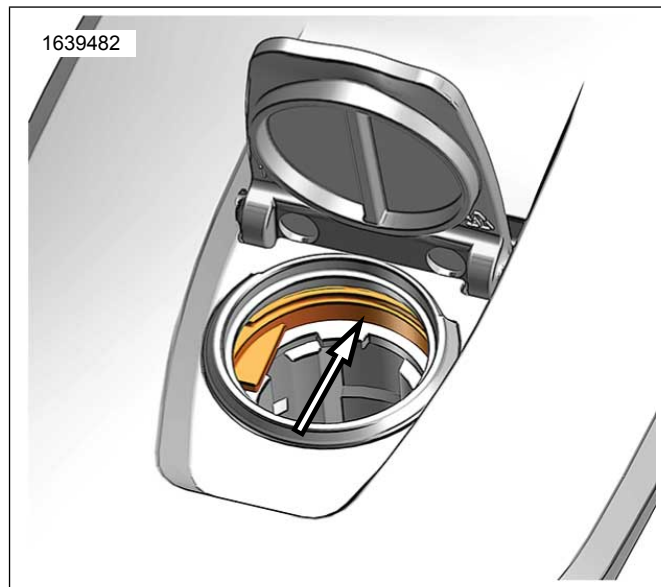


Figure 7. Cap Latch Slider

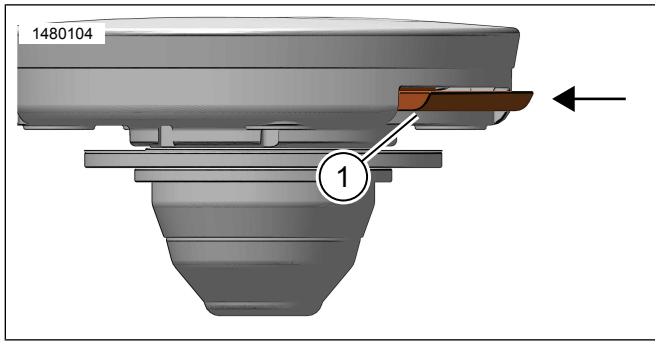


Figure 8. Locking Tab

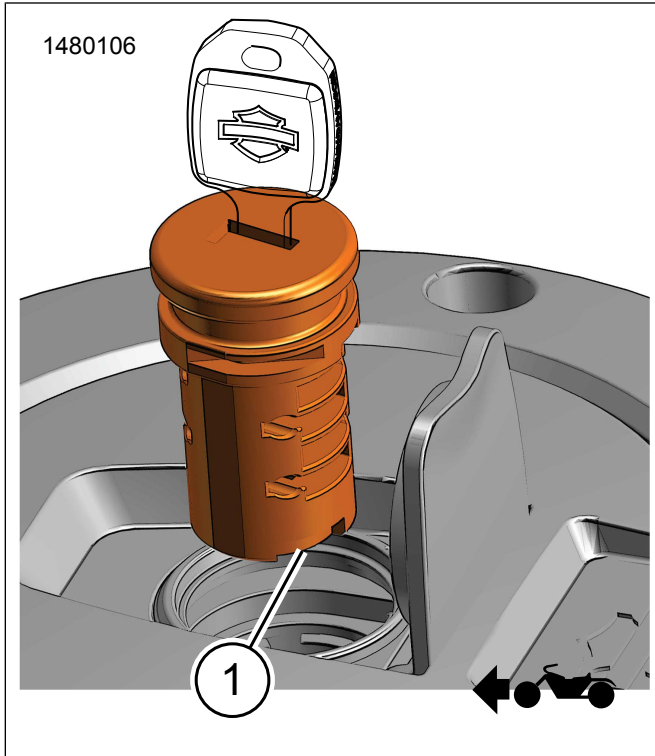


Figure 9. Lock Cylinder Orientation

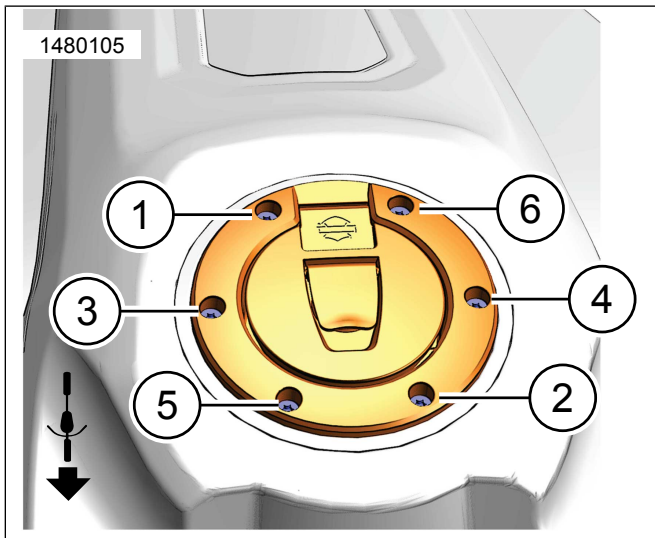


Figure 10. Round Locking Fuel Cap Installed / Torque Sequence