



INSTRUCTIONS

94100075

2021-03-08



CARBON FIBER EXHAUST SHIELD INSERT

GENERAL INFORMATION

Table 1. General Information

Kits	Suggested Tools	Skill Level ⁽¹⁾	Time
65400648	Safety Glasses, Torque Wrench		30 minutes

(1) Tightening to torque value or other moderate tools and techniques required

KIT CONTENTS

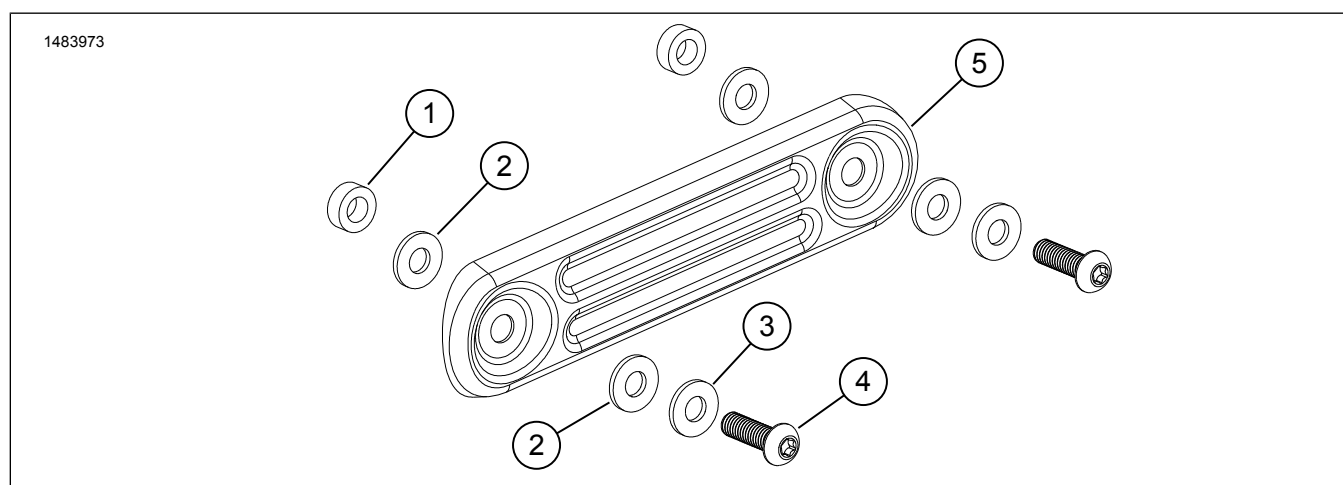


Figure 1. Kit Contents: Carbon Fiber Exhaust Shield Insert

Table 2. Kit Contents: Carbon Fiber Exhaust Shield Insert

<input checked="" type="checkbox"/>	Verify that all contents are present in the kit before installing or removing items from vehicle.				
	Item	Qty	Description	Part No.	Notes
<input type="checkbox"/>	1	2	Spacer, aluminum	10600074	
<input type="checkbox"/>	2	4	Insulating washer	10600072	
<input type="checkbox"/>	3	2	Plain washer	10600076	
<input type="checkbox"/>	4	2	Screw	10201160	
<input type="checkbox"/>	5	1	Carbon fiber insert	Not sold separately	

GENERAL

Models

For model fitment information, see the Parts and Accessories (P&A) Retail Catalog or the Parts and Accessories section of www.harley-davidson.com.

Verify that the most current version of the instruction sheet is used. It is available at: h-d.com/isheets

Contact Harley-Davidson Customer Support Center at 1-800-258-2464 (U.S. only) or 1-414-343-4056.

Installation Requirements

⚠ WARNING

Rider and passenger safety depend upon the correct installation of this kit. If the procedure is not within your capabilities or you do not have the correct tools, have a Harley-Davidson dealer perform the installation. Improper installation of this kit could result in death or serious injury. (00308b)

REMOVE

1. See Figure 2. Remove and discard screws (1).
2. Remove OEM heat shield (2).

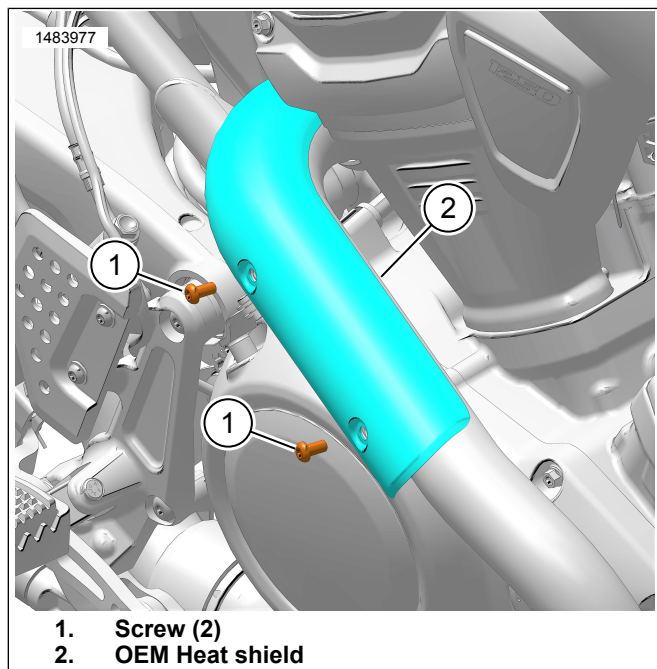


Figure 2. OEM Heat Shield

INSTALL

1. See Figure 3. Apply threadlocker to screws (5).
Consumable: LOCTITE 262 HIGH STRENGTH THREADLOCKER AND SEALANT (RED) (94759-99)
2. Install OEM heat shield (1).
3. Install aluminum spacers (2), insulation washers (3) and carbon fiber insert (6).
4. Install insulation washers (3), plain washers (4) and screws (5).
5. Tighten screws (5).
Torque: 5–6.2 N·m (44–55 **in-lbs**) *Carbon fiber insert screws*

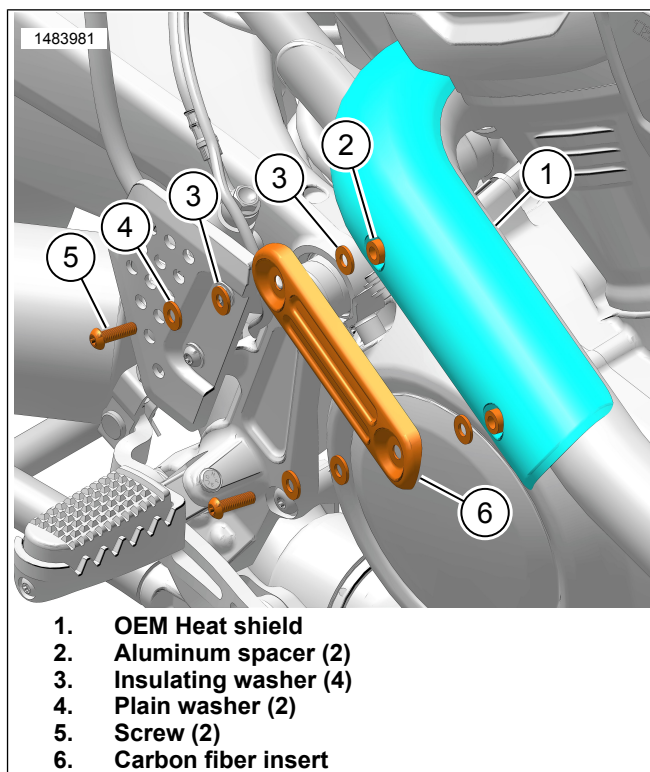


Figure 3. Carbon Fiber Insert