



# INSTRUCTIONS

94100272

2021-08-02



## LACED WHEEL KIT

### GENERAL INFORMATION

Table 1. General Information

Kits	Suggested Tools	Skill Level <sup>(1)</sup>
42400045	Safety Glasses, Torque Wrench, Air Impact Wrench	
<i>(1) DTII and dealer installation required</i>		

### KIT CONTENTS

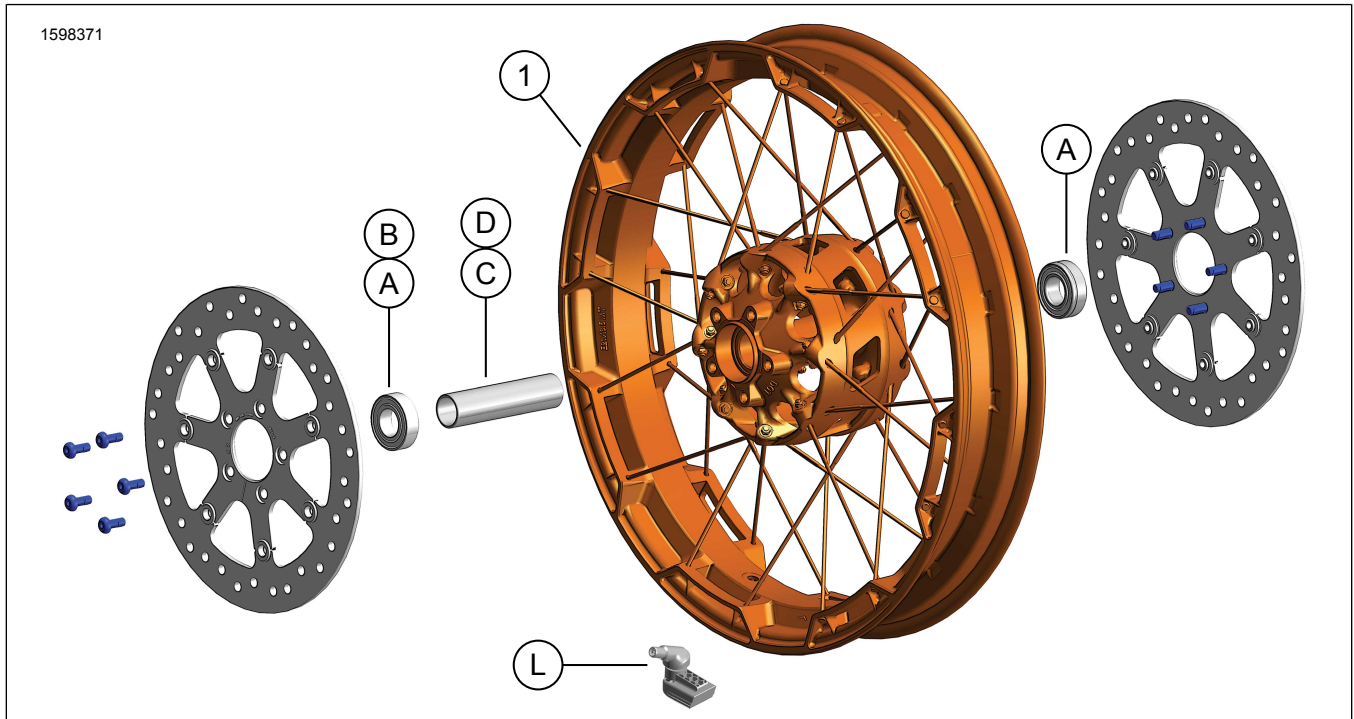


Figure 1. Kit Contents: Front Wheel Kit

Table 2. Kit Contents: Front Wheel Kit

Verify that all contents are present in the kit before installing or removing items from vehicle.					
<input checked="" type="checkbox"/>	Item	Qty	Description	Part No.	Notes
<input type="checkbox"/>	1	1	Wheel	Not sold separately	
<b>Items mentioned in text, but not included in kit</b>					
<input checked="" type="checkbox"/>	A	3	Original Equipment (OE) Bearing, (2 non ABS models, 1 ABS models), Refer to Table 3 and Table 4		
<input checked="" type="checkbox"/>	B	1	OE Bearing, ABS***, Refer to Table 3.		
<input checked="" type="checkbox"/>	C,D	1	OE Axle sleeve, Refer to Table 3 and Table 4		
<input checked="" type="checkbox"/>	L	1	OE Valve stem, Refer to Table 3 and Table 4		

**Table 3. FRONT 25 mm Bearing Non-ABS Wheel Installation Kit (41455-08C)**

FRONT 25 mm Bearing Non-ABS Wheel Installation Kit (41455-08C)		ITEM (Quantity Used and Description)								
Fitment	Wheel Size	A	C	D	J	K	L	M	N	
2008 Touring; 2009 and later FLHRC (non-ABS) and Trike (non-ABS)	16 x 3.0 in	2	0	1	0	1	*	*	*	
2009 and later Touring (non-ABS)	17 x 3.0 in	2	0	1	0	0	*	*	*	
2008 and later Touring (non-ABS)	18 x 3.5 in	2	0	1	0	**	*	*	*	
2008 - 2017 Dyna (except FLD, FXDWG, FXDF)	19 x 2.5 in	2	1	0	**	0	*	*	0	
2008 - 2017 VRSCAW, VRSCD, VRSCF, VRSCDX (non-ABS)	19 x 3.0 in	2	1	0	**	0	*	*	0	
2009 and later Touring (non-ABS)	19 x 3.5 in	2	0	1	0	0	*	*	*	
2017 and later FLTRX, FLTRXS, FLTRXSE (non-ABS)	21 x 3.5 in	2	0	1	0	0	*	*	*	
Installation kits are designed to work with many different wheel styles and fitments. Contact a Harley-Davidson dealer to verify that the wheel and installation kits are both designed and approved for the motorcycle they are being installed on. NOTES: * See NOTE above valve installation step in INSTALLATION to determine which valve stem to use for your particular kit. Discard other valve stem(s). ** See NOTES for your wheel kit above the wheel assembly step in INSTALLATION to determine if bearing shim is used for your particular wheel kit and fitment. *** Bearing shim installed under the primary bearing.	A	Bearing, regular (2)						9276B		
	C	Axle sleeve						41748-08		
	D	Axle sleeve						41900-08		
	J	Bearing shim***						41450-08		
	K	Bearing shim***						43903-08		
	L	Valve stem, short						43157-83A		
	M	Valve stem, long						43206-01		
N	Valve stem, pull thru						40999-87			

**Table 4. FRONT 25 mm Bearing ABS Wheel Installation Kit (41454-08B)**

FRONT 25 mm Bearing ABS Wheel Installation Kit (41454-08B)		ITEM (Quantity Used and Description)									
Fitment	Wheel Size	A	B	C	D	J	K	L	M	N	
2008 Touring and 2009 and later FLHRC with ABS	16 x 3.0 in	1	1	0	1	0	1	*	*	0	
2009 and later Touring with ABS	17 x 3.0 in	1	1	0	1	0	0	*	*	*	
2008 and later Touring with ABS	18 x 3.5 in	1	1	0	1	**	**	*	*	*	
2012 - 2017 Dyna with ABS (Except FLD, FXDWG and FXDF)	19 x 2.5 in	1	1	1	0	**	**	*	*	0	
2008 - 2017 VRSCAW, VRSCD, VRSCF and VRSCDX with ABS	19 x 3.0 in	1	1	1	0	**	**	*	*	0	
2009 and later Touring with ABS	19 x 3.5 in	1	1	0	1	0	0	*	*	*	
2017 and later FLTRX, FLTRXS, FLTRXSE with ABS	21 x 3.5 in	1	1	0	1	0	0	*	*	*	
Installation kits are designed to work with many different wheel styles and fitments. Contact a Harley-Davidson dealer to verify that the wheel and installation kits are both designed and approved for the motorcycle they are being installed on. NOTES: * See NOTE above valve installation step in INSTALLATION to determine which valve stem to use for your particular kit. Discard other valve stem(s). ** See NOTES for your wheel kit above the wheel assembly step in INSTALLATION to determine which bearing shim to use for your particular wheel kit and fitment. *** Red side of bearing must be installed toward the wheel. The ABS bearing is primary. **** Bearing shim installed under the primary bearing.	A	Bearing, regular						9276B			
	B	Bearing, ABS***						9252A			
	C	Axle sleeve						41748-08			
	D	Axle sleeve						41900-08			
	J	Bearing shim****						41450-08			
	K	Bearing shim****						43903-08			
	L	Valve stem, short						43157-83A			
	M	Valve stem, long						43206-01			
N	Valve stem, pull thru						40999-87				

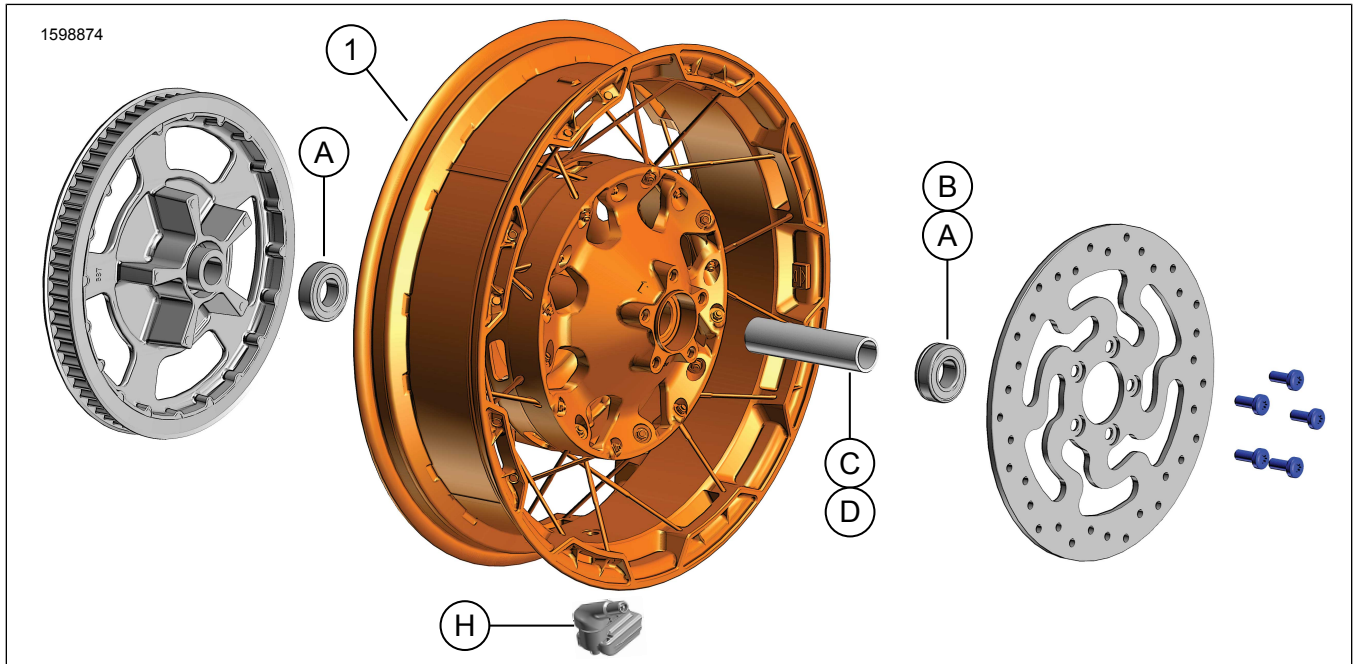


Figure 2. Rear Wheel Kit

Table 5. Kit Contents: Rear Wheel Kit

Verify that all contents are present in the kit before installing or removing items from vehicle.					
<input checked="" type="checkbox"/>	Item	Qty	Description	Part No.	Notes
<input type="checkbox"/>	1	1	Wheel	Not sold separately	
<b>Items mentioned in text, but not included in kit</b>					
<input checked="" type="checkbox"/>	A	3	OE Bearing (2 non ABS models, 1 ABS models), Refer to Table 6 and Table 7		
<input checked="" type="checkbox"/>	B	1	OE Bearing, ABS***, Refer to Table 6.		
<input checked="" type="checkbox"/>	C,D	1	OE Axle sleeve, Refer to Table 6 and Table 7		
<input checked="" type="checkbox"/>	H	1	OE Valve stem, Refer to Table 6 and Table 7		

Table 6. REAR 25mm Bearing Wheel Installation Kit (41456-08C)

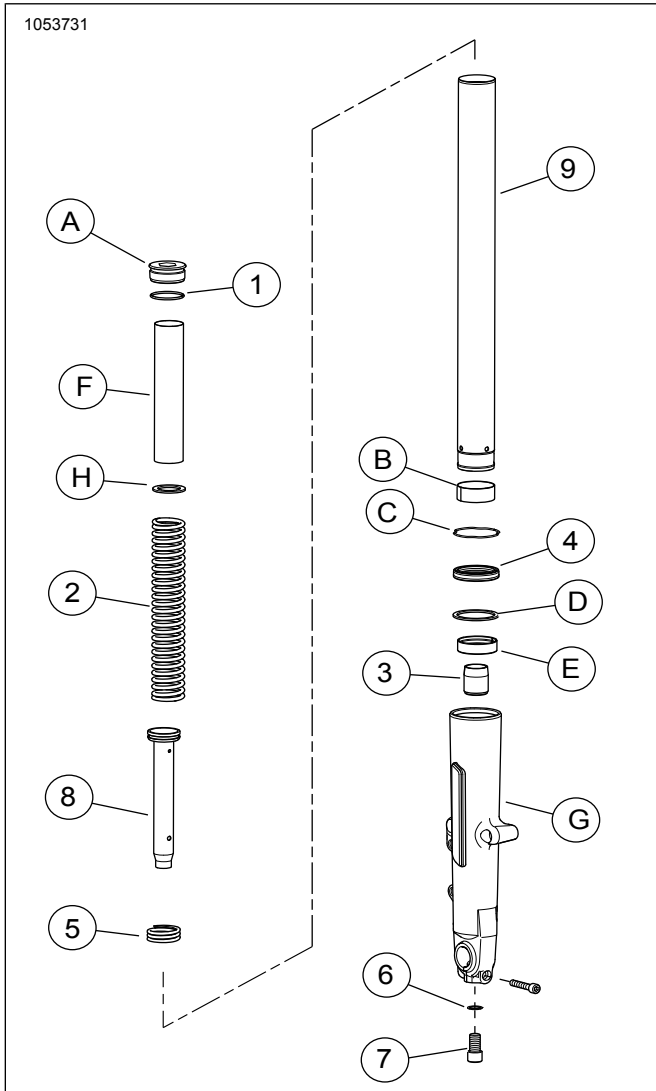
REAR 25 MM Bearing Non-ABS Wheel Installation Kit (41456-08C)		Item (Quantity Used and Description)									
Fitment	Wheel Size	A	C	D	E	F	H	I	J		
2009 and later FLT non-ABS	16 x 5.0 in	2	1	0	0	0	*	*	*		
2009 and later FLT non-ABS	18 x 5.0 in	2	1	0	0	0	*	*	*		
2008 VRSCD non-ABS	18 x 5.5 in	2	0	0	1	**	*	*	0		
2008 and later FXCW and FXCWC non-ABS	18 x 8.0 in	2	0	1	0	0	*	*	0		
2008 - 2017 VRSCAW, VRSCDX and VRSCF non-ABS	18 x 8.0 in	2	0	0	1	**	*	*	0		
Installation kits are designed to work with many different wheel styles and fitments. Contact a Harley-Davidson dealer to verify that the wheel and installation kits are both designed and approved for the motorcycle they are being installed on. NOTES: * See NOTE above valve installation step in INSTALLATION to determine which valve stem to use for your particular kit. Discard other valve stem(s). ** See INSTALLATION to determine if shim is required. *** Bearing shim installed under primary bearing.		A	Bearing, regular (2)							9276B	
		C	Axle sleeve							41349-07	
		D	Axle sleeve							41358-08	
		E	Axle sleeve							43704-08	
		F	Bearing shim***							41447-08	
		H	Valve stem, short							43157-83A	
		I	Valve stem, long							43206-01	
J	Valve stem, pull thru							40999-87			

Table 7. REAR 25 MM Bearing ABS Wheel Installation Kit (41453-08C)

REAR 25 MM Bearing ABS Wheel Installation Kit (41453-08C)		Item (Quantity Used and Description)										
Fitment	Wheel Size	A	B	C	D	E	F	G	H	I	J	
2008 FLT with ABS	16 x 3.0 in	1	1	0	1	0	0	1	*	*	0	
2009 and later FLT with ABS	16 x 5.0 in	1	1	1	0	0	0	0	*	*	*	
2009 and later FLT with ABS	18 x 5.0 in	1	1	1	0	0	0	0	*	*	*	

**Table 7. REAR 25 MM Bearing ABS Wheel Installation Kit (41453-08C)**

REAR 25 MM Bearing ABS Wheel Installation Kit (41453-08C)		Item (Quantity Used and Description)									
Fitment	Wheel Size	A	B	C	D	E	F	G	H	I	J
2008 VRSCDa with ABS	18 x 5.5 in	1	1	0	0	1	**	0	*	*	0
2008 - 2017 VRSCAWa, VRSCDXa, VRSCXa and VRSCFa with ABS	18 x 8.0 in	1	1	0	0	1	**	0	*	*	0
Installation kits are designed to work with many different wheel styles and fitments. Contact a Harley-Davidson dealer to verify that the wheel and installation kits are both designed and approved for the motorcycle they are being installed on. NOTES: * See NOTE above valve installation step in INSTALLATION to determine which valve stem to use for your particular kit. Discard other valve stem(s). ** Primary bearing. Bearing must be installed with red side facing the wheel. *** Bearing shim installed under primary bearing.		A	Bearing, regular								9276B
		B	Bearing, ABS**								9252A
		C	Axle sleeve								41349-07
		D	Axle sleeve								41900-08
		E	Axle sleeve								43704-08
		F	Bearing shim***								41447-08
		G	Bearing shim***								43904-08
		H	Valve stem, short								43157-83A
		I	Valve stem, long								43206-01
		J	Valve stem, pull thru								40999-87



**Figure 3. Front Fork**

**Table 8. Kit Contents: Front Fork Kit**

<b>Verify that all contents are present in the kit before installing or removing items from vehicle.</b>					
<input checked="" type="checkbox"/>	Item	Qty	Description	Part No.	Notes
<input type="checkbox"/>		1	Front fork kit	Not sold separately	
<input type="checkbox"/>	1	2	O-ring	46508-01	
<input type="checkbox"/>	2	2	Fork spring	Not sold separately	
<input type="checkbox"/>	3	2	Oil lock	Not sold separately	
<input type="checkbox"/>	4	2	Fork oil seal	46514-01A	
<input type="checkbox"/>	5	2	Rebound spring	Not sold separately	
<input type="checkbox"/>	6	2	Washer	46615-06	
<input type="checkbox"/>	7	2	Screw, M14	45500118	
<input type="checkbox"/>	8	2	Damper tube w/ piston ring	Not sold separately	
<input type="checkbox"/>	9	2	Fork tube	45500537	
<b>Items mentioned in text, but not included in kit</b>					
<input checked="" type="checkbox"/>	A	2	Fork bolt		
<input checked="" type="checkbox"/>	B	2	Bushing, fork tube		
<input checked="" type="checkbox"/>	C	2	Retaining clip		
<input checked="" type="checkbox"/>	D	2	Spacer seal		
<input checked="" type="checkbox"/>	E	2	Slider bushing		
<input checked="" type="checkbox"/>	F	2	Spring collar		
<input checked="" type="checkbox"/>	G	2	Fork slider		
<input checked="" type="checkbox"/>	H	2	Flat washer		

**GENERAL**

**Models**

For model fitment information, see the Parts and Accessories (P&A) Retail Catalog or the Parts and Accessories section of [www.harley-davidson.com](http://www.harley-davidson.com).

Verify that the most current version of the instruction sheet is used. It is available at: [h-d.com/isheets](http://h-d.com/isheets)

Contact Harley-Davidson Customer Support Center at 1-800-258-2464 (U.S. only) or 1-414-343-4056.

**Installation Requirements**

**⚠ WARNING**

Rider and passenger safety depend upon the correct installation of this kit. Use the appropriate service manual procedures. If the procedure is not within your capabilities or you do not have the correct tools, have a Harley-Davidson dealer perform the installation. Improper installation of this kit could result in death or serious injury. (00333b)

**NOTE**

*This instruction sheet references service manual information. A service manual for the year and model motorcycle is required for this installation and is available from:*

- A Harley-Davidson dealer.
- H-D Service Information Portal, a subscription-based access available for most 2001 and newer models. For more information see *Frequently ask questions about subscriptions*.

**⚠ WARNING**

The rider's safety depends upon the correct installation of this kit. Dealer installation is required for vehicles equipped with ABS brakes. Proper installation of this kit requires the use of special tools available only through a Harley-Davidson Dealer. An improperly serviced brake system can adversely affect brake performance, which could result in death or serious injury. (00578b)

## ▲ WARNING

Install only wheels and installation kits approved for your model motorcycle. Contact a Harley-Davidson dealer to verify fitment. Mismatching wheels and installation kits or installing wheels not approved for your model can cause loss of control, which could result in death or serious injury. (00610c)

Proper installation of this kit requires separate purchase of the following parts which are available at a Harley-Davidson dealer:

### Front Fork Lowering Requirements:

- LOCTITE 565 THREAD SEALANT (99818-97)
- HARLEY-DAVIDSON SEAL GREASE (11300005)
- FORK TUBE HOLDER (PART NUMBER: HD-41177)
- FORK SEAL DRIVER (PART NUMBER: HD-45305)
- FORK OIL LEVEL GAUGE (PART NUMBER: HD-59000B)
- FRONT FORK COMPRESSOR (PART NUMBER: HD-45966)
- Extension Tool (HD-45966-1)

### 21" Front Wheel Requirements:

Accessory hub caps are not compatible with this wheel.

- Wheel Installation Kit: Refer to Table 3 and Table 4
- (10) Brake Disc Screws: (3655A) or (46646-05)
- Wheel Bearing Remover and Installer (94134-09)
- **Tire:** (43100008)
- **Rotors:** See P&A catalog for approved rotor fitment
- **Fender:** See P&A catalog for approved fender fitment
- 116° Tire Pressure Monitoring System (TPMS) Sensor. See fitment statement for details

### 18" Rear Wheel Requirements:

- Wheel Installation Kit: Refer to Table 6 and Table 7
- (5) Brake Disc Screws (43567-92) or (46647-05)
- Wheel Bearing Remover and Installer (94134-09)

- **Tire:** (43200045)
- 116° TPMS Sensor. See fitment statement for details

## REMOVE

1. Remove and disassemble existing front wheel assembly. See service manual.
  - a. See Figure 4. If front brake disc diameter does not measure 3.25 in., discard discs.
  - b. Save axle, axle nut and wheel spacers for kit installation.
2. Remove front fender. See service manual or instruction sheet that came with **new** fender.
3. See Figure 5. Remove and disassemble existing rear wheel assembly. See service manual.
4. Remove front forks. See service manual.

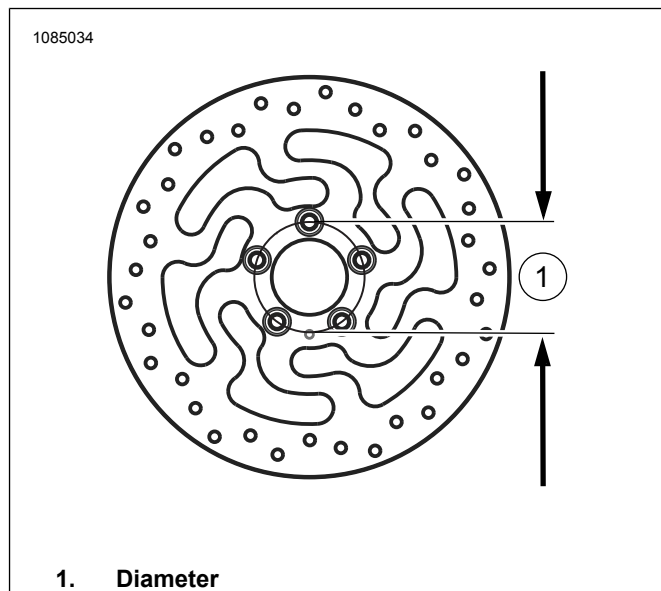


Figure 4. Disc Mounting Hole Diameter

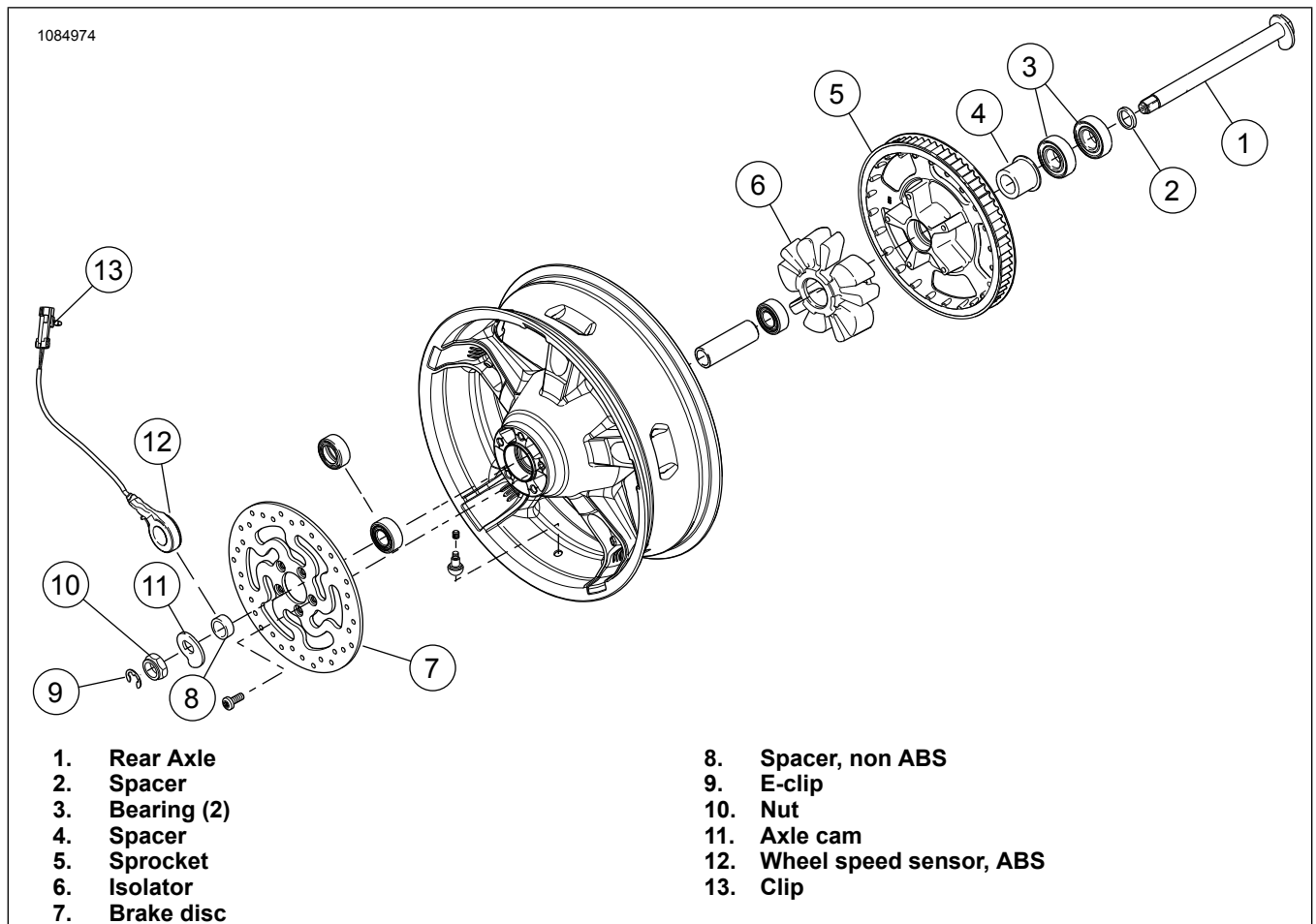


Figure 5. Rear Wheel Parts for Reuse

**PREPARE****NOTICE**

Do not re-use brake disc/rotor screws. Re-using these screws can result in torque loss and damage to brake components. (00319c)

**Front Wheel****NOTE**

- Install primary bearing first using appropriate service manual and WHEEL BEARING REMOVER/INSTALLER.
- Bearing shims provided in installation kit are not required and can be discarded.
- Left side of wheel has Department of Transportation (DOT) markings to identify primary bearing side.

1. See Table 3 and Table 4. Assemble wheel installation kit components and brake disc(s) to wheel, using appropriate service parts table. See service manual.
2. Refer to Tire Mounting. Install tire on wheel.

**Rear Wheel****NOTE**

Do not install the bearing shim included in the installation kit.

**NOTICE**

Do not re-use sprocket mounting screws. Re-using sprocket mounting screws can result in torque loss and damage to the sprocket and/or belt assembly. (00480b)

See Figure 2 for components needed for preparing **new** rear wheel.

**NOTE**

- Install primary bearing first using appropriate service manual and WHEEL BEARING REMOVER/INSTALLER.
- Right side of rear wheel has brake rotor and is the primary bearing side.
- Bearing shims provided in installation kit are not required and can be discarded.

1. See Table 6 and Table 7. Assemble wheel installation kit components to wheel using appropriate service parts table. See service manual.
2. Refer to Tire Mounting. Install tire on wheel. See service manual.

**Tire Mounting****NOTE**

If vehicle is equipped with TPMS use TPMS valve stem. Valve stem points toward high side of vehicle when installed. If vehicle

is not equipped with TPMS install pull thru valve stem (40999-87) included in installation kit. Discard all other valve stems.

1. See Figure 1 and Figure 2. Install short valve stem (L,H) on front and rear wheels. See service manual.

**NOTE**

- Only install the required (separately purchased) tire.
  - If wheel has a yellow dot sticker on rim, orient tire so white dot on tire is opposite of sticker. If wheel has a green dot sticker on rim, orient tire so white dot on tire is aligned with sticker. If no rim dot sticker is present, see service manual.
  - Use plastic protectors on tire mounting tools and rim clamps when mounting a tire to a painted wheel.
  - When mounting tires, liberally use tire lube on wheel and tire.
2. Mount **new** front and rear tire (purchased separately) to wheels. See service manual.
    - a. **Front Tire:** 43100008
    - b. **Rear Tire:** 43200045
  3. Install front brake discs on wheel using **new** hardware. See service manual.
  4. Install stock rear brake disc and sprocket on wheel using **new** hardware. See service manual.

## Front Fork Assembly

1. See Figure 6. Install fork in Fork Tube Holder (HD-41177) as follows:
  - a. Clamp end of tool (1) in vise in a horizontal position.
  - b. See Figure 3. With fork bolt (A) upward, clamp fork tube (9), between rubber pads on inboard side of tool. Tighten knobs until fork tube is securely held.

**NOTE**

Be aware that fork bolt (A) is under spring-pressure, so have a firm grasp on bolt as the last thread is turned.

**▲ WARNING**

**Wear safety glasses or goggles when servicing fork assembly. Do not remove slider tube caps without relieving spring preload or caps and springs can fly out, which could result in death or serious injury. (00297a)**

2. Slowly remove fork bolt and O-ring (1) from fork tube. Discard O-ring.
3. Remove spring collar (F), flat washer (H) and spring (2) from fork tube.
4. Remove fork assembly from fork tube holder.

5. Turn fork upside down over drain pan to drain oil.
6. For best results, slowly pump fork tube and fork slider (G) at least 10 times.
7. Install fork spring and spring collar back into fork tube.
8. Put a shop rag on floor. Discard screw and copper washer.
9. Turn the fork assembly upside down.
10. Press the end of the spring collar against the rag.
11. Compress spring.
12. Remove the screw (7) with copper washer (6) from the bottom end of fork slider.
13. Use air impact wrench for best results.
14. Save spring collar and flat washer for later use.
15. Remove and discard fork spring.
16. Push damper tube (8) and rebound spring (5) free of fork tube by inserting a small diameter rod through opening in bottom of tube. Discard damper tube and rebound spring.
17. Using pick tool, remove retaining clip (C) between fork slider and fork tube. Do not expand or stretch retaining clip to remove from fork tube or clip may be damaged.

**NOTE**

To overcome any resistance, use fork tube as a slide hammer: Push fork tube into fork slider and then pull it outward with a moderate amount of force. Repeat this sequence until fork tube separates from fork slider.

18. Remove fork tube from fork slider.
19. Slide fork oil seal (4), spacer seal (D) and slider bushing (E) off end of fork tube. Discard fork oil seal.
20. Remove oil lock (3) from end of fork tube (9) or inside of fork slider. Discard oil lock and fork tube.



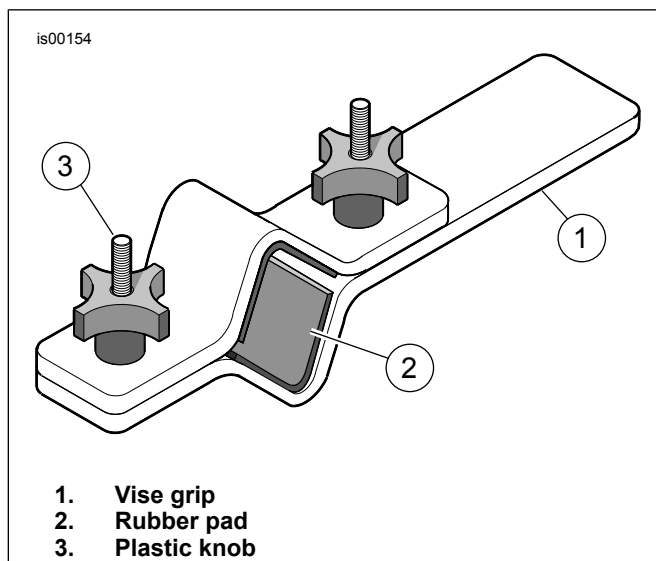


Figure 6. Fork Tube Holder (HD-41177)

## Fork Assembly

### NOTICE

**Exercise caution to avoid scratching or nicking fork tube. Damaging tube can result in fork oil leaks after assembly. (00421b)**

### NOTE

*Inspect parts for wear or damage. Replace or repair as necessary.*

1. See Figure 3. Ensure piston ring is installed on damper tube with cut-outs down.
2. Place **new** rebound spring (5) on **new** damper tube from kit (8).
3. Insert damper tube into **new** fork tube (9).
4. Insert **new** spring (2) and spring collar (F) into fork tube, with dense section of coils toward damper tube.
5. Push bottom of damper tube through opening at bottom end of fork tube.
6. Place **new** oil lock (3) over end of damper tube.
7. Apply threadlocker to **new** screw (7).  
Consumable: LOCTITE 565 THREAD SEALANT (99818-97)
8. Position fork tube and damper tube in fork slider (G).
9. Hold assembly in place by exerting pressure on spring.
10. Install screw (7) with **new** copper washer (6) from kit.
11. Tighten screw.  
Torque:  $45 \pm 5$  N·m ( $33 \pm 4$  ft-lbs)
12. Coat Inside Diameter (ID) and Outside Diameter (OD) of slider bushing (E) with clean fork oil.

13. Slide slider bushing down fork tube (either direction).
14. Slide spacer seal (D) down fork tube until it contacts slider bushing (either direction).
15. Coat ID of **new** fork oil seal (4) with clean fork oil.
16. Coat OD of fork oil seal with Harley-Davidson Seal Grease.
17. With lettering side facing up, slide fork oil seal down fork tube until it contacts spacer seal.
18. See Figure 7. Obtain Fork Seal/Bushing Tool (HD-45305) and proceed as follows:
  - a. Slide fork seal installer down fork tube until it contacts fork oil seal.
  - b. See Figure 7. Using tool like a slide hammer, drive fork oil seal (with spacer seal and slider bushing) down fork tube until retaining clip groove is visible in fork slider ID.
  - c. See Figure 3. Slide retaining clip (C) down fork tube until it contacts fork oil seal.
  - d. Install retaining clip in fork slider groove.
  - e. Do not expand or stretch retaining clip to install on fork tube or clip may be damaged.
19. Remove spring collar and fork spring.

### ▲ WARNING

**Incorrect amount of fork oil can adversely affect handling and lead to loss of vehicle control, which could result in death or serious injury. (00298a)**

20. Fill fork tube as follows:
  - a. With fork tube compressed, pour Harley-Davidson Type E Fork Oil into fork tube almost to top.
  - b. Pump fork tube ten times to remove air from system.
21. Adjust fork oil level, so that it is 91 mm (3.58 in) from top of fork tube with fork tube compressed and fork spring, spring collar and flat washer removed. Proceed as follows:
  - a. See Figure 8. Obtain Front Fork Oil Level Gauge (HD-59000B).
  - b. Loosen thumbscrew on metal ring.
  - c. Move it up or down the rod until bottom of ring is 91 mm (3.58 in) from bottom of rod.
  - d. Tighten thumbscrew.
  - e. Push plunger on cylinder all the way in.
  - f. See Figure 3. Insert rod into top of fork tube until metal ring rests flat on top of fork tube.

- g. Pull plunger to remove fork oil from fork tube.
- h. Observe fork oil through transparent tube to verify that oil is being drawn from fork.
- i. Remove rod from fork tube.
- j. Push plunger into cylinder to eject excess fork oil into suitable container.
- k. If necessary, repeat Steps 21(e) through 21(j). Level is correct when no fork oil is observed being drawn through transparent tube.

22. Install fork spring into fork tube with dense end down.

**NOTE**

Verify fork spring is installed with dense section of coils to bottom.

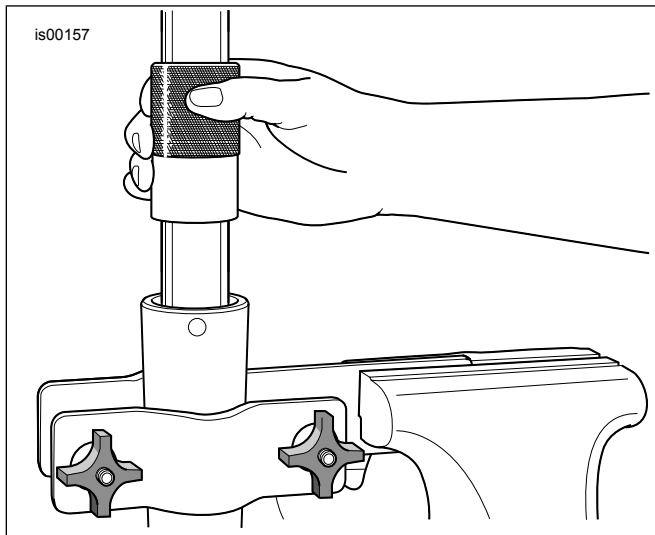
23. Install flat washer (H) on top of spring.

24. Install spring collar (F) on top of washer.

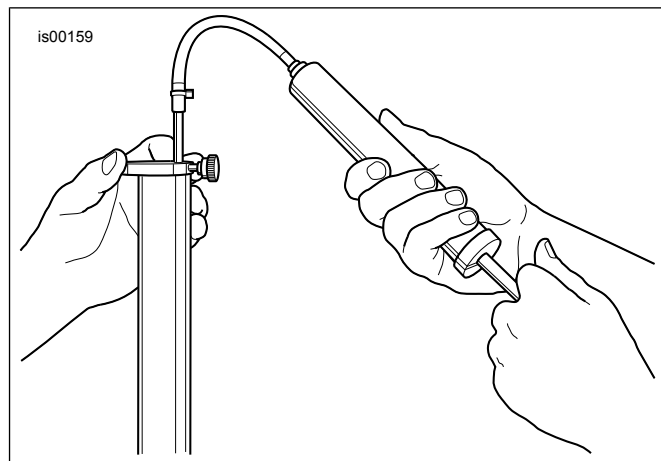
25. Install **new** O-ring (1) onto fork bolt (A).

26. Install fork tube bolt. Tighten.

Torque: 55 ± 25 N·m (41 ± 18 ft-lbs)



**Figure 7. Install Fork Oil Seal**



**Figure 8. Remove Excess Fork Oil (HD-59000B)**

**INSTALL**

1. Install front forks. See service manual.

**NOTE**

**IMPORTANT:** ABS must be re-flashed.

2. Re-flash system using DT II.

Special Tool: DIGITAL TECHNICIAN II (HD-48650)

- a. Choose REFLASH icon
- b. Follow on-screen prompts.

3. Install **new** front fender. See installation sheet that came with front fender.

4. Install front wheel (1), previously removed wheel spacers, stock axle and stock axle nut. See service manual.

5. Install rear wheel (1), stock axle and stock spacers. See service manual.

**⚠ WARNING**

After repairing the brake system, test brakes at low speed. If brakes are not operating properly, testing at high speeds can cause loss of control, which could result in death or serious injury. (00289a)

**⚠ WARNING**

Whenever a wheel is installed and before moving the motorcycle, pump brakes to build brake system pressure. Insufficient pressure can adversely affect brake performance, which could result in death or serious injury. (00284a)

6. Pump brakes to build system pressure.

**COMPLETE**

1. Test ride vehicle to verify fork travel and rebound.

## MAINTENANCE

### NOTE

*Wheels must be maintained regularly to keep their original shine and luster.*

1. Clean heavily-soiled wheel surfaces using Wheel & Tire Cleaner. Apply with Harley® Wheel and Spoke Brush.
2. Thoroughly clean wheel with a good quality cleaner, such as Wheel & Tire Cleaner.
3. After cleaning and polishing, seal finish with a good quality sealer, such as Glaze Poly Sealant.