



INSTRUCTIONS

J06336

2021-08-02



SHIFTER PEG KIT

GENERAL

Kit Number

33600100, 33600111, 33600333, 33600334, 33600335

Models

For model fitment information, see the P&A Retail Catalog or the Parts and Accessories section of www.harley-davidson.com (English only).

⚠ WARNING

Rider and passenger safety depend upon the correct installation of this kit. If the procedure is not within your capabilities or you do not have the correct tools, have a Harley-Davidson dealer perform the installation. Improper installation of this kit could result in death or serious injury. (00308b)

Kit Contents

See Figure 1 and Table 1.

REMOVE

1. Remove previously installed shifter peg from vehicle. Discard peg and screw.

INSTALL

1. **Kits 33600100, 33600111:** See Figure 1. Install shifter peg to shift pedal (A) with screw (1).
2. **Kits 33600333, 36600334, 33600335:** See Figure 1. Install lockwasher (3), shift pedal (A), shifter peg (2) and screw (1).
3. Tighten screw.

Torque: 15–20 N·m (11–15 ft-lbs)

SERVICE PARTS

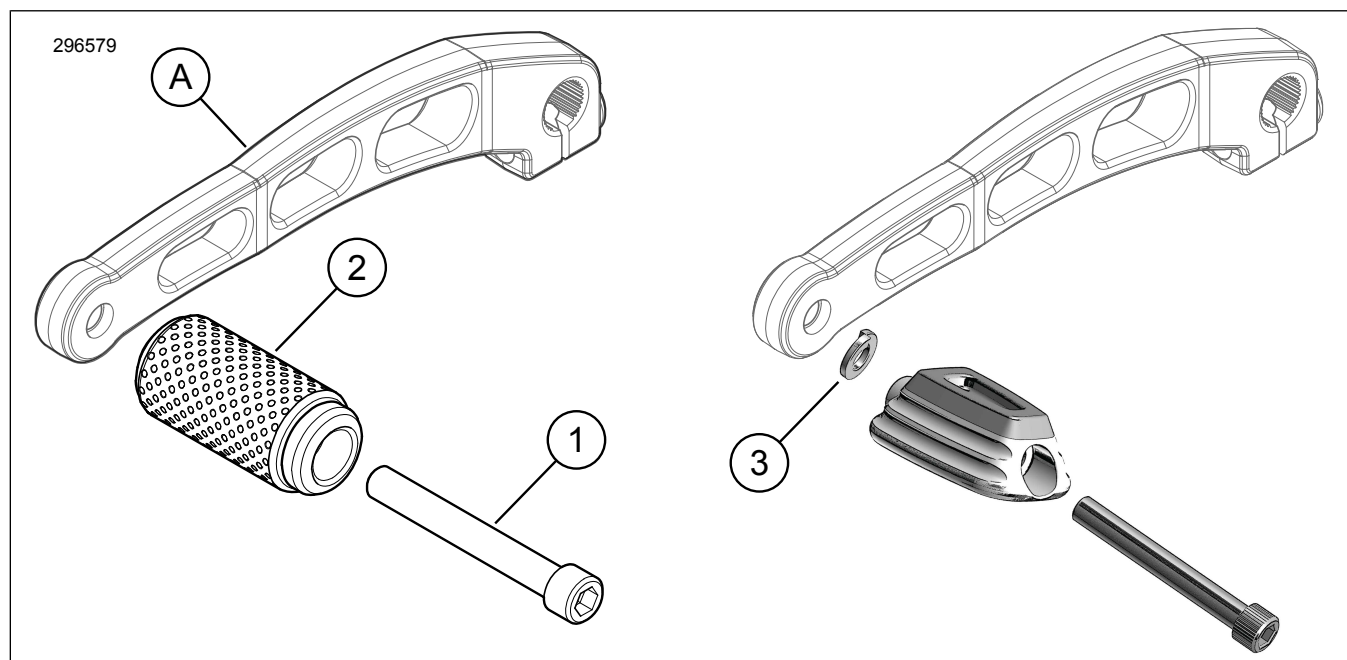


Figure 1. Service Parts: Shifter Peg Kit

Table 1. Service Parts Table

Item	Description (Quantity)	Part Number
1	Screw Screw, Kits 33600333, 36600334, 33600335	Not Sold Separately 10201058
2	Shifter peg	Not Sold Separately
3	Lockwasher, Kits 33600333, 36600334, 33600335	7041

Table 1. Service Parts Table

Item	Description (Quantity)	Part Number
Items mentioned in text, but not included in kit:		
A	Shift pedal	