



# INSTRUCTIONS

J03090

2021-08-02



## BRAKE PEDAL PAD KIT

### GENERAL

#### Kit Numbers

42710-04, 42711-04, 50600342, 50600343, 50600457, 50600458, 50600459

#### Models

For model fitment information, see the P&A retail catalog or the Parts and Accessories section of [www.harley-davidson.com](http://www.harley-davidson.com) (English only).

#### ⚠ WARNING

Rider and passenger safety depend upon the correct installation of this kit. If the procedure is not within your capabilities or you do not have the correct tools, have a Harley-Davidson dealer perform the installation. Improper installation of this kit could result in death or serious injury. (00308b)

#### Kit Contents

See Figure 1 and Table 1.

#### NOTE

A Service Manual for your motorcycle is available from any Harley-Davidson Dealer.

### REMOVE

1. Remove previously installed brake pedal cover from vehicle.

### INSTALL

1. Position **new** brake pedal cover (1) over brake pedal pad (2).

#### Large Brake Pedal

1. Align assembled brake pad (items 1, 2, 6) from kit.
2. Install brake pedal (5), washer (3) and screw (4) to cover (1). Tighten.  
Torque: 26 N·m (19.2 ft-lbs)

#### Small Brake Pedal

1. Align **new** cover (1) and brake pedal pad (2).
2. Install brake pedal (5), washer (3) and screw (4) to cover (1). Tighten.  
Torque: 2.5 N·m (22.1 in-lbs)

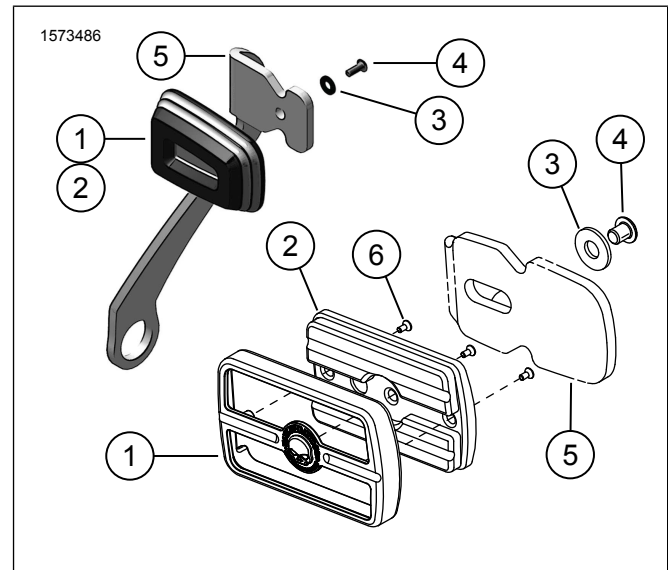


Figure 1. Service Parts

Table 1. Service Parts

Item	Description (Quantity)	Part Number
SMALL - Brake Pedal Pad		
1	Cover, brake pedal, chrome (Kit 42710-04) Cover, brake pedal, satin black (Kit 50600342) Cover, brake pedal, machine cut (Kit 50600457) Cover, brake pedal, black (Kit 50600458) Cover, brake pedal, chrome (Kit 50600459)	Not sold separately
2	Tread, Pad, brake pedal	Not sold separately
3	Washer, flat, offset	6716
4	Screw, hex socket, buttonhead	3026
5	Small brake pedal	
LARGE - Brake Pedal Pad		
1	Cover, brake pedal, chrome (Kit 42711-04) Cover, brake pedal, satin black (Kit 50600343)	Not sold separately
2	Tread, Pad, brake pedal	Not sold separately
3	Washer, flat, offset	6333
4	Screw, hex socket, buttonhead	3340
5	Large brake pedal	
6	Screw, flat head (3)	4277