



# INSTRUCTIONS

94100217

2022-03-08



## FORWARD CONTROL KIT

### GENERAL INFORMATION

Table 1. General Information

Kits	Suggested Tools	Skill Level <sup>(1)</sup>
50502205	Safety Glasses, Torque Wrench	
<i>(1) DTII and dealer installation required</i>		

### KIT CONTENTS

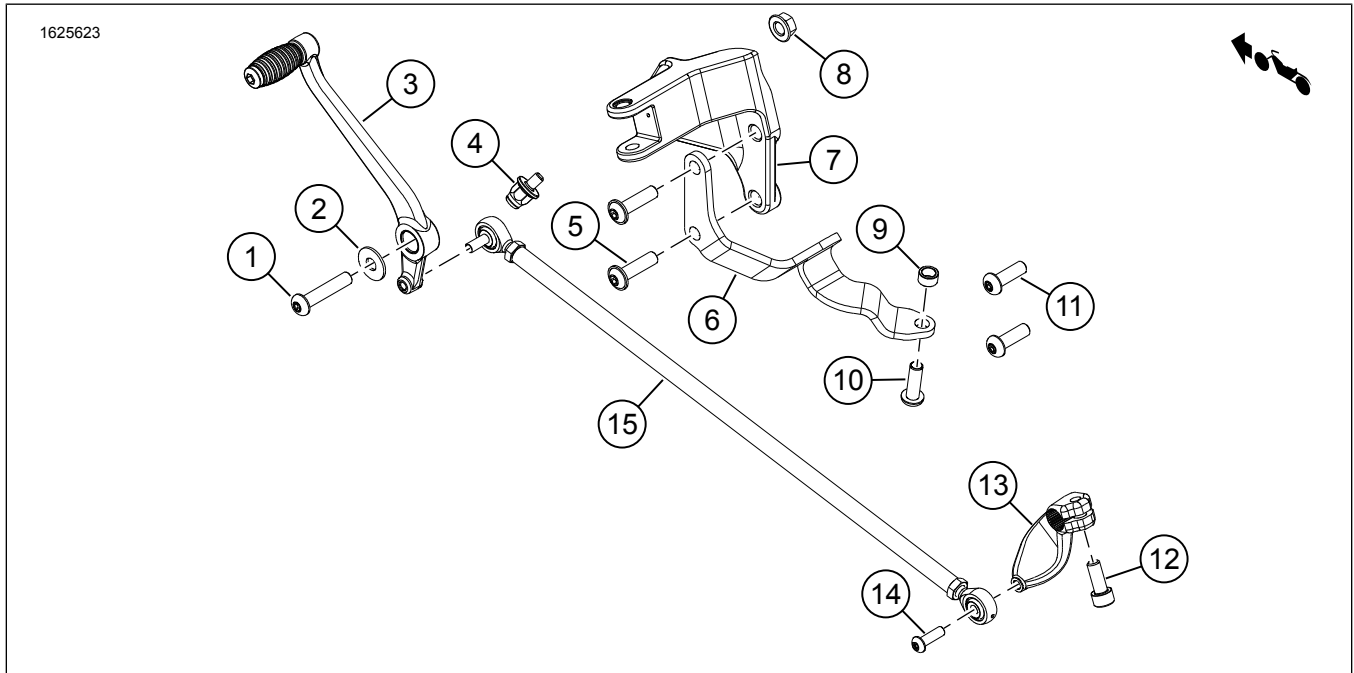


Figure 1. Kit Contents: Left Forward Control Kit

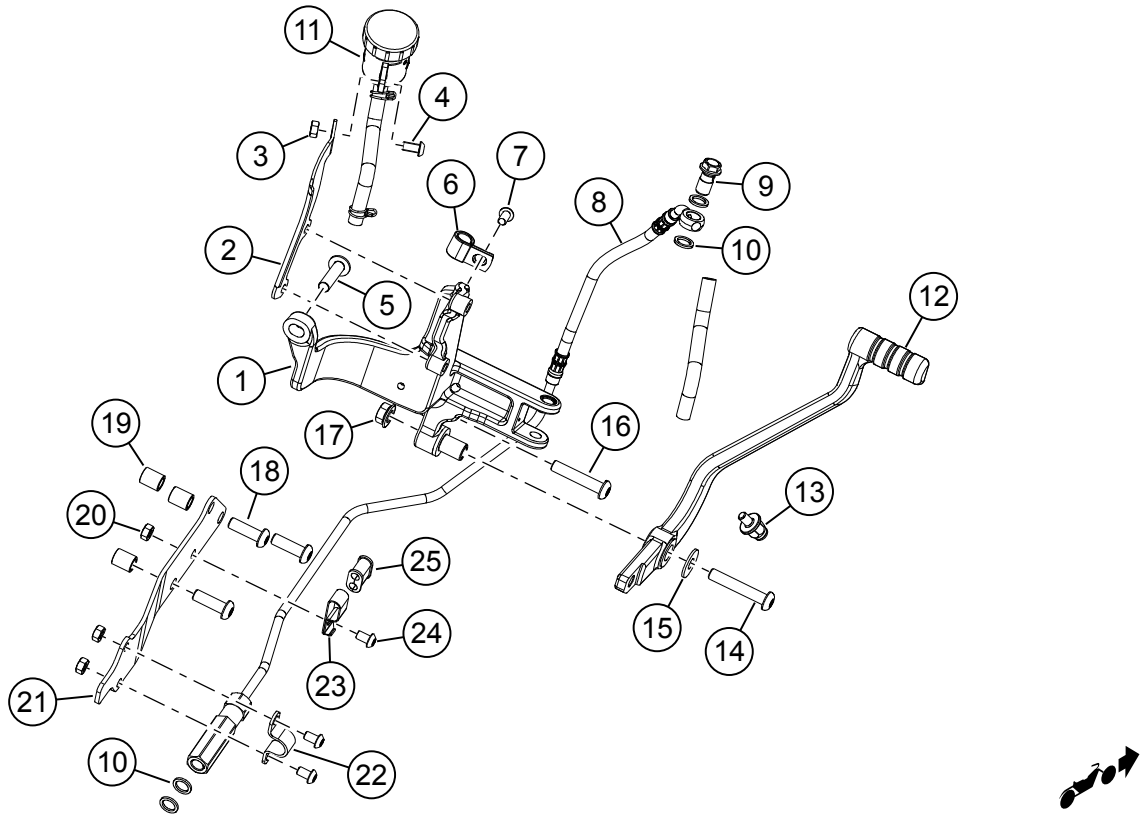


Figure 2. Kit Contents: Right Forward Control Kit

**Table 2. Kit Contents: Left Forward Control Kit**

<input checked="" type="checkbox"/>	Verify that all contents are present in the kit before installing or removing items from vehicle.				
	Item	Qty	Description	Part No.	Notes
<input type="checkbox"/>	1	1	Screw, M8	10201009	
<input type="checkbox"/>	2	1	Washer, custom	10600060	
<input type="checkbox"/>	3	1	Shift lever	33600285	
<input type="checkbox"/>	4	1	Wear peg	50501135	
<input type="checkbox"/>	5	2	Screw, button head flange, M8 Torx™	10200792	
<input type="checkbox"/>	6	1	Footpeg support mount bracket	50502221	
<input type="checkbox"/>	7	1	Footpeg mount bracket	50502203	
<input type="checkbox"/>	8	1	Flange nut, M8	10100132	
<input type="checkbox"/>	9	1	Spacer	12400209	
<input type="checkbox"/>	10	1	Screw, button head cap, M8	10200929	
<input type="checkbox"/>	11	2	Screw, button head cap, M8	10200929	
<input type="checkbox"/>	12	1	Screw, hex socket head	3709M	
<input type="checkbox"/>	13	1	Shifter rod lever	33900169	
<input type="checkbox"/>	14	1	Screw, button, M8 Torx™	10200712	
<input type="checkbox"/>	15	1	Shifter rod	33600377	

**Table 3. Kit Contents: Right Forward Control Kit**

<input checked="" type="checkbox"/>	Verify that all contents are present in the kit before installing or removing items from vehicle.				
Item	Qty	Description	Part No.	Notes	
<input type="checkbox"/>	1	1	Footpeg mounting bracket assembly	50502200	
<input type="checkbox"/>	2	1	Reservoir mounting bracket	41600361	
<input type="checkbox"/>	3	1	Nut	10100018A	
<input type="checkbox"/>	4	1	Screw, button head cap, M6	10200935	
<input type="checkbox"/>	5	1	Screw, button head, M8 Torx™	10200792	
<input type="checkbox"/>	6	1	Clamp (brake line)	10800208	
<input type="checkbox"/>	7	1	Screw, button head cap, M6	10200935	
<input type="checkbox"/>	8	1	Brake line, EHCU to Rear Master Cylinder	41800855	
<input type="checkbox"/>	9	1	Banjo bolt	41750-06B	
<input type="checkbox"/>	10	4	Gasket, brake line	41751-06A	
<input type="checkbox"/>	11	1	Master cylinder reservoir, rear brake	41701112	Includes hose and spring clamps
<input type="checkbox"/>	12	1	Brake pedal	50600501	
<input type="checkbox"/>	13	1	Wear peg	50501135	
<input type="checkbox"/>	14	1	Screw, button head cap, M8	10200931	
<input type="checkbox"/>	15	1	Washer, custom	10600060	
<input type="checkbox"/>	16	1	Screw, M8	10201009	
<input type="checkbox"/>	17	1	Flange nut	10100132	
<input type="checkbox"/>	18	3	Screw, button head cap, M8	10200929	
<input type="checkbox"/>	19	3	Spacer	12400210	
<input type="checkbox"/>	20	3	Nut	10100018A	
<input type="checkbox"/>	21	1	Brake line bracket	41600360	
<input type="checkbox"/>	22	1	Clamp, band	41600359	
<input type="checkbox"/>	23	1	Clamp, double locking	10800191	
<input type="checkbox"/>	24	3	Screw, button head cap	10200934	
<input type="checkbox"/>	25	1	Grommet, retaining	12100115	

**GENERAL**

Contact Harley-Davidson Customer Support Center at 1-800-258-2464 (U.S. only) or 1-414-343-4056.

**Models**

For model fitment information, see the Parts and Accessories (P&A) Retail Catalog or the Parts and Accessories section of [www.harley-davidson.com](http://www.harley-davidson.com).

Verify that the most current version of the instruction sheet is used. It is available at: [h-d.com/isheets](http://h-d.com/isheets)



## Installation Requirements

### ⚠ WARNING

Rider and passenger safety depend upon the correct installation of this kit. Use the appropriate service manual procedures. If the procedure is not within your capabilities or you do not have the correct tools, have a Harley-Davidson dealer perform the installation. Improper installation of this kit could result in death or serious injury. (00333b)

### NOTE

This instruction sheet references service manual information. A service manual for the year and model motorcycle is required for this installation and is available from:

- A Harley-Davidson dealer.
- H-D Service Information Portal, a subscription-based access available for most 2001 and newer models. For more information see *Frequently ask questions about subscriptions*.

These items are available at your Harley-Davidson dealership:

- Separate purchase of Chin Spoiler Kit (Part No. 57200347) is required for installation.
- Digital Technician II (DT II) is required to bleed brake lines. DIGITAL TECHNICIAN II (PART NUMBER: HD-48650)

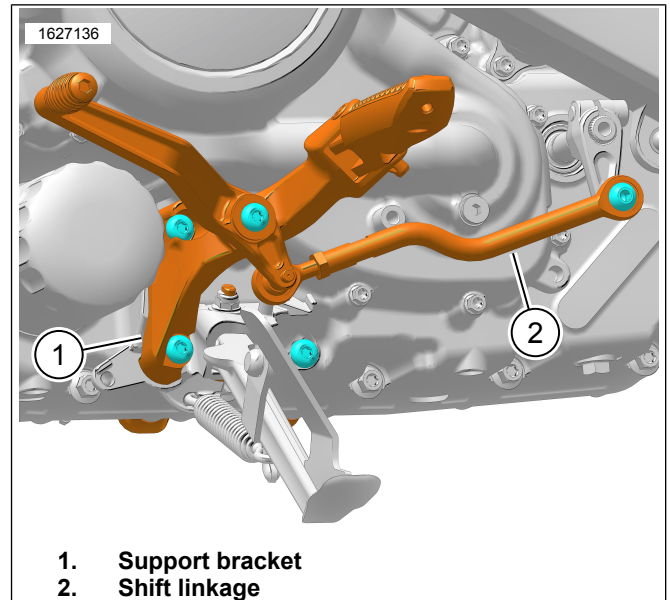
Installation by a technician at a Harley-Davidson dealership is recommended.

## PREPARE

1. Remove main fuse. See service manual.
2. Remove and discard OE right and left chin spoilers. See service manual.
  - a. Retain screws for later use.
3. Remove left and right foot pegs. See service manual.
4. Remove exhaust system. See service manual.

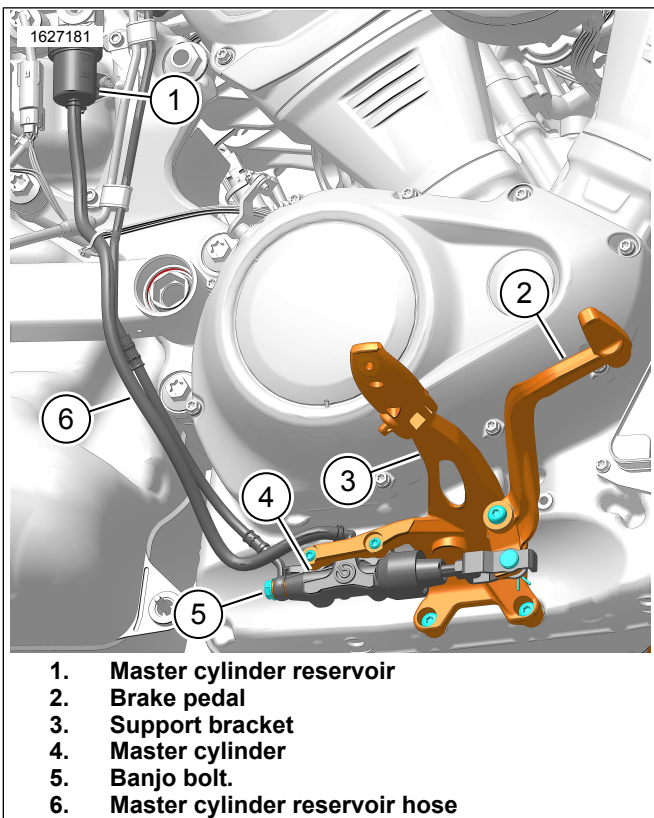
## REMOVE

1. Remove left rider footrest assembly. See service manual.
  - a. See Figure 3. Remove shift linkage (2) from shifter rod lever.
  - b. Remove left foot support bracket (1).



**Figure 3. Left Footrest Assembly**

2. Remove rear master cylinder. See service manual.
  - a. See Figure 4. Remove banjo bolt (5). Discard brake line gasket washers.
  - b. Remove and discard master cylinder reservoir (1).
  - c. Remove and discard master cylinder reservoir hose (6).
  - d. Remove screws and rear master cylinder (4). Save for later use.
3. Remove right rider footrest assembly. See service manual.
  - a. See Figure 4. Remove and discard brake pedal (2).
  - b. Remove and discard support bracket (3).
  - c. Keep brake line assembled to vehicle Electro Hydraulic Control Unit (EHCU).

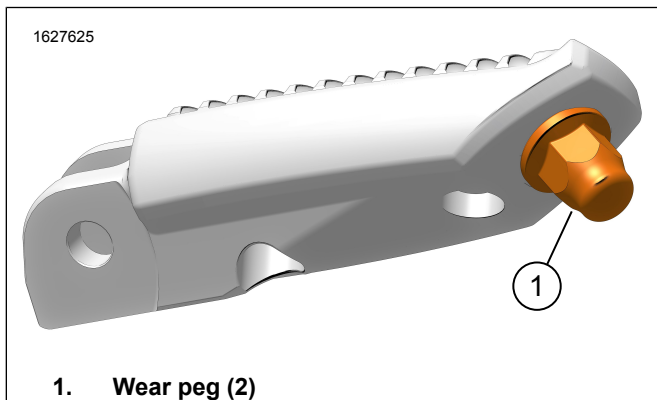


1. Master cylinder reservoir
2. Brake pedal
3. Support bracket
4. Master cylinder
5. Banjo bolt.
6. Master cylinder reservoir hose

Figure 4. Right Footrest Assembly

## Wear Pegs

1. See Figure 2. Install wear peg (13). Tighten.  
Torque: 3.5–4.5 N·m (31–40 **in-lbs**) *Wear peg*
2. Repeat procedure for opposite side.



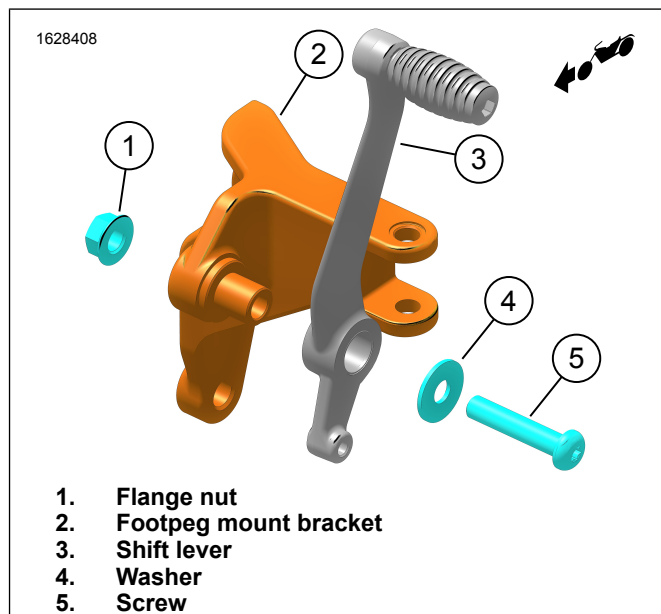
1. Wear peg (2)

Figure 5. Wear Peg

## Left Footrest

1. See Figure 6. Install shift lever (3) to footpeg mount bracket (2).
2. Install washer (4) and screw (5).
3. Install flange nut (1). Tighten.  
Torque: 24.5–30 N·m (18.1–22.1 ft-lbs) *Flange nut*

4. See Figure 7. Install footpeg mount bracket (1) and footpeg support mount bracket (6).
  - a. Loosely install spacer (8) and screw (7).
  - b. Loosely install screws (5).
  - c. Tighten screws (5).  
Torque: 22–24 N·m (16.2–17.7 ft-lbs) *Screw, Torx*
  - d. Tighten screws (7).  
Torque: 21–25 N·m (15.5–18.4 ft-lbs) *Screw, button head*
5. Remove and discard Original Equipment (OE) shifter rod lever and install lever from kit (10).
  - a. Adjust clocking of shifter rod lever (10) to achieve desired position.
  - b. Install screw (12). Tighten.  
Torque: 19.5–51.5 N·m (14.4–38.0 ft-lbs) *Screw, hex socket head*
6. Install shifter rod assembly (9).
  - a. Install screw (14).
  - b. Install rod end screw (3).
  - c. Tighten screws (3, 14).  
Torque: 10.5–12 N·m (93–106 **in-lbs**) *Shifter rod screw*
7. See Figure 8. Install screws (1).  
Torque: 21–25 N·m (15–18 ft-lbs) *Jiffy stand screw*
  - a. Refer to Table 2. Item 11.



1. Flange nut
2. Footpeg mount bracket
3. Shift lever
4. Washer
5. Screw

Figure 6. Left Support Bracket

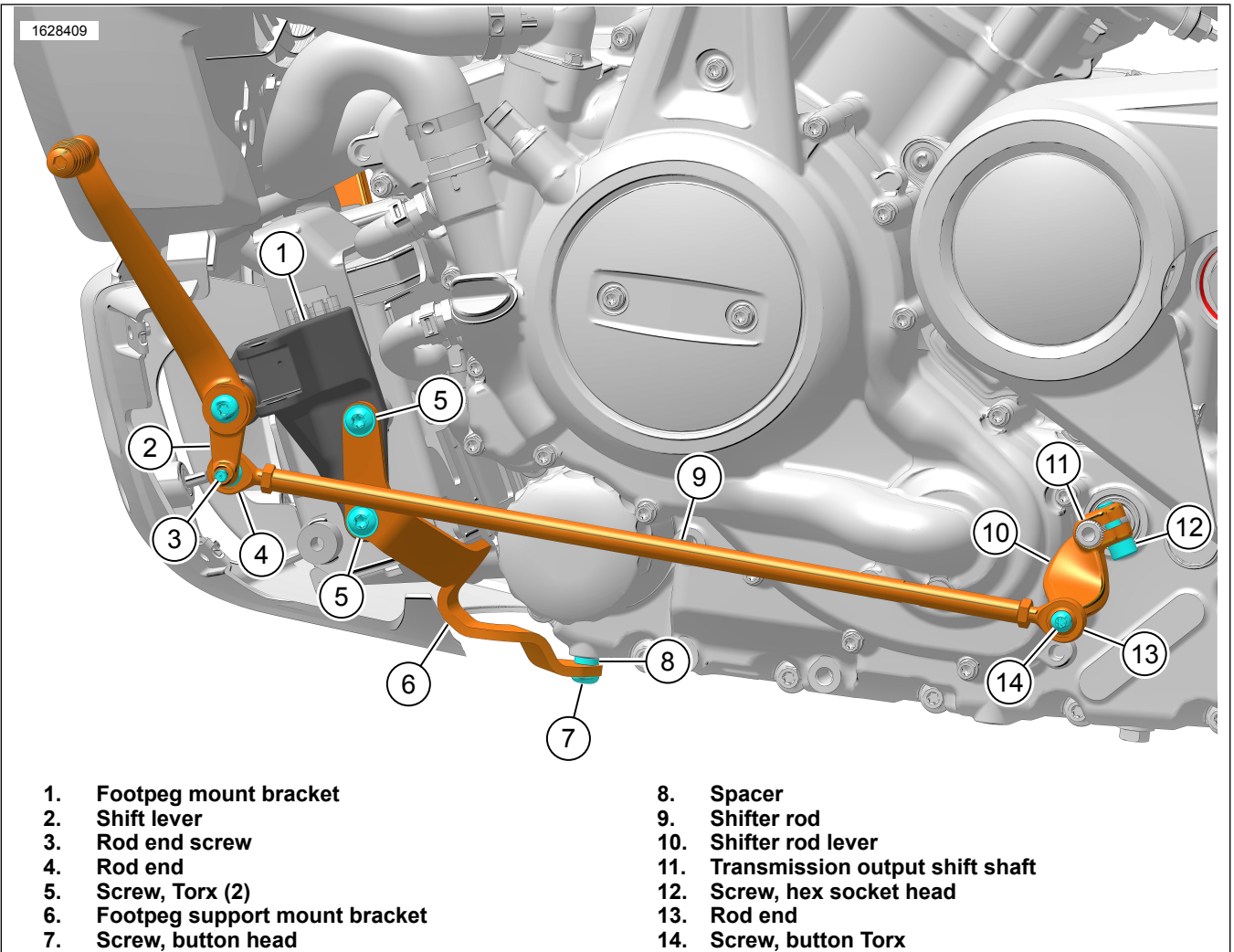


Figure 7. Left Foot Control Assembly

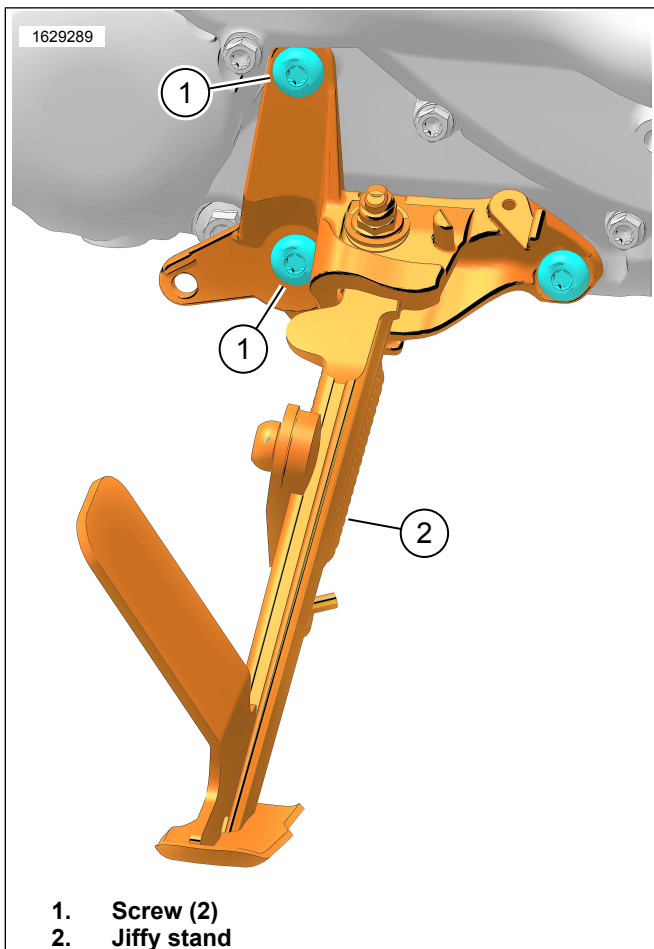


Figure 8. Jiffy Stand

## Right Footrest

1. See Figure 9. Install brake pedal.
  - a. Install brake (3) to footpeg mounting bracket (2).
  - b. Install washer (4) and screw (5).
  - c. Install flange nut (1). Tighten.  
Torque: 17–21 N·m (13–15 ft-lbs) *Brake pedal nut*
2. See Figure 10. Install rear brake master cylinder.
  - a. Position reservoir mounting bracket (2) and rear brake master cylinder (4) to footpeg mounting bracket (3).
  - b. Install screws (1). Tighten.  
Torque: 9–11 N·m (7–8 ft-lbs) *Rear master cylinder screw*
  - c. Install brake pedal (5) to master cylinder clevis (8).
  - d. Install clevis pin (6) and cotter pin (7).
3. See Figure 11. Install rear brake master cylinder reservoir assembly.
  - a. Install reservoir (4).
    - b. Apply threadlocker to screw (5).  
LOCTITE 243 MEDIUM STRENGTH  
THREADLOCKER AND SEALANT (BLUE)  
(99642-97)
    - c. Install screw (5) and nut (3). Tighten.  
Torque: 4–7 N·m (3–5 ft-lbs) *P-Clamp screw*
    - d. Reposition spring clamp (1) on brake hose (2) that installs to master cylinder.
    - e. Install brake hose (2) to master cylinder from reservoir (4).
    - f. Move spring clamp (1) to lock down brake hose.
4. See Figure 11. Install brake line to rear master cylinder.
  - a. See Figure 12. Position brake line as shown.
  - b. See Figure 11. Install **new** gasket washers (7).
  - c. Loosely install banjo bolt (6).
  - d. See Figure 13. Install p-clamp (2) to brake line (1).
  - e. Loosely install screw (3).
  - f. See Figure 12. Check that brake line is properly routed as shown.
  - g. See Figure 13. Tighten screw (3).  
Torque: 4–7 N·m (3–5 ft-lbs) *P-Clamp screw*
  - h. See Figure 11. Tighten banjo bolt (6).  
Torque: 23–26 N·m (17–19 ft-lbs) *Banjo bolt*
5. See Figure 14. Install footpeg mounting bracket assembly (1) to vehicle.
  - a. Install screws (2). Tighten.  
Torque: 22–24 N·m (16–18 ft-lbs) *Footpeg mounting bracket assembly screw*

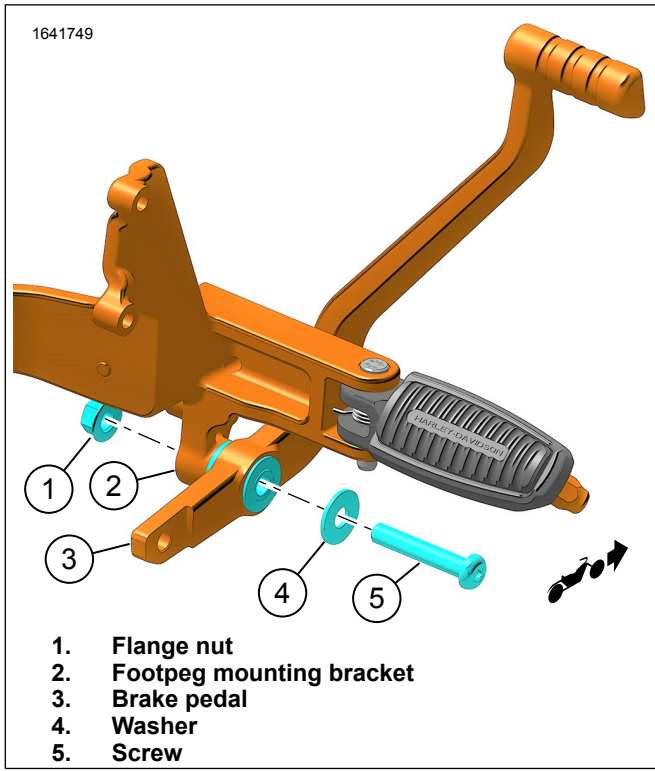


Figure 9. Brake Pedal

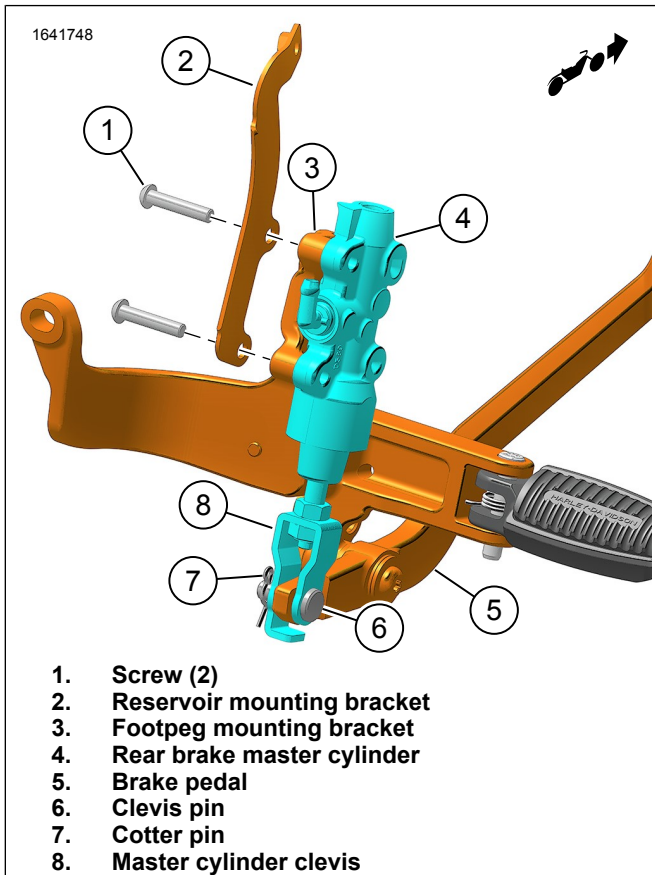


Figure 10. Rear Brake Master Cylinder

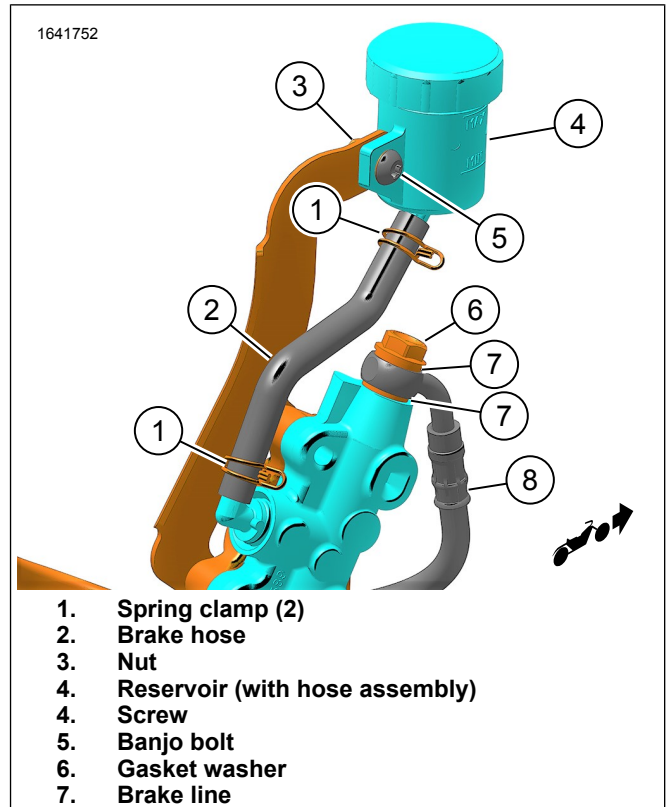


Figure 11. Rear Brake Master Cylinder Reservoir

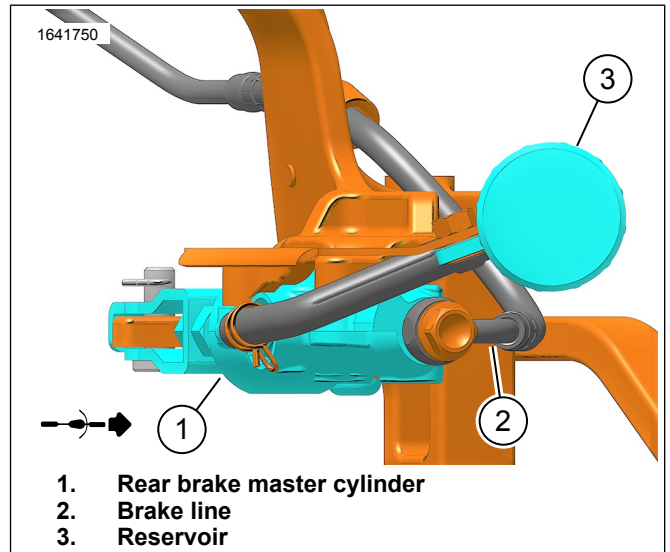


Figure 12. Top View, Brake Line Clocking



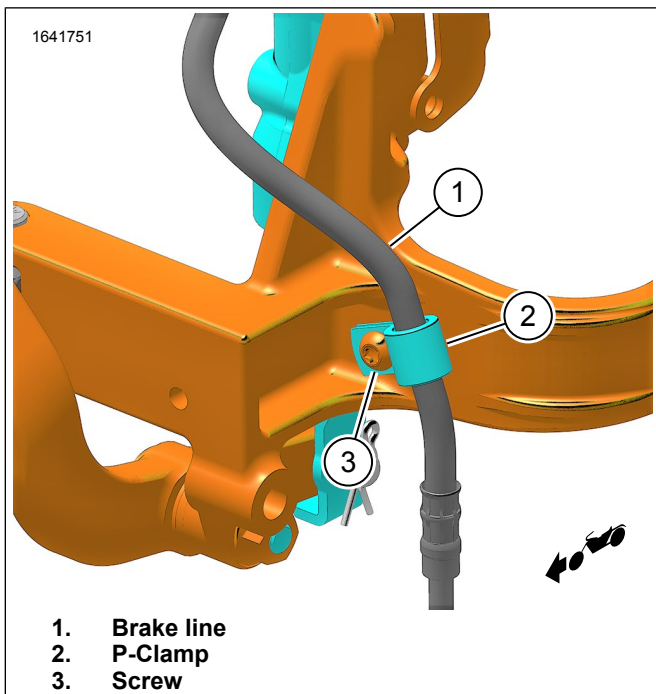


Figure 13. P-Clamp

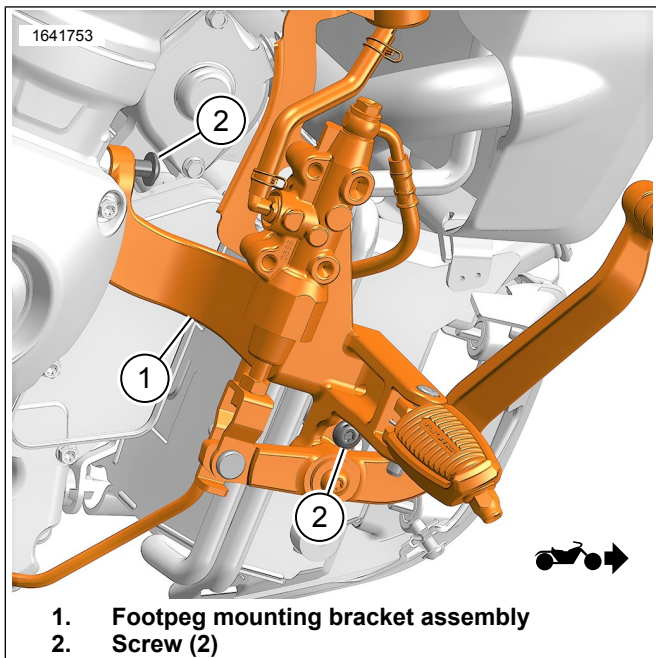


Figure 14. Install Assembly

## Brake Line Bracket

1. See Figure 15. Install retaining grommet (9) and double locking clamp (10) around hard section of brake line (12).
  - a. Use lower slot in retaining grommet (9) for brake line.
2. Position brake line (12) and clamp (10) on top of brake line bracket (11).
3. Install band clamp (6) around groove of brake line manifold.
4. Apply threadlocker to screws (5, 8).

Consumable: LOCTITE 243 MEDIUM STRENGTH THREADLOCKER AND SEALANT (BLUE) (99642-97)

5. Install screws (5, 8) and nuts (4, 7).
  - a. Adjust brake line and clamps as needed.
  - b. Tighten.  
Torque: 4.5–8.5 N·m (40–75 in-lbs)
6. See Figure 16. Install brake line bracket (3).
7. Apply threadlocker to screws (2).  
Consumable: LOCTITE 243 MEDIUM STRENGTH THREADLOCKER AND SEALANT (BLUE) (99642-97)
8. Install spacers (2) and screws (1). Tighten.  
Torque: 21–25 N·m (15–18 ft-lbs)
9. See Figure 15. Install banjo bolt (1).
  - a. Install **new** gasket washers (2).  
Torque: 23–26 N·m (17–19 ft-lbs) *Banjo bolt*

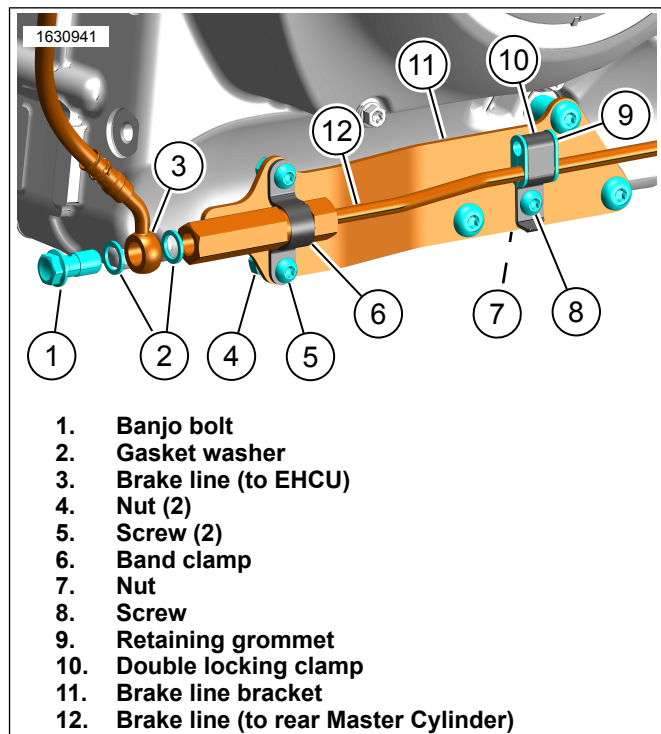


Figure 15. Banjo Bolt

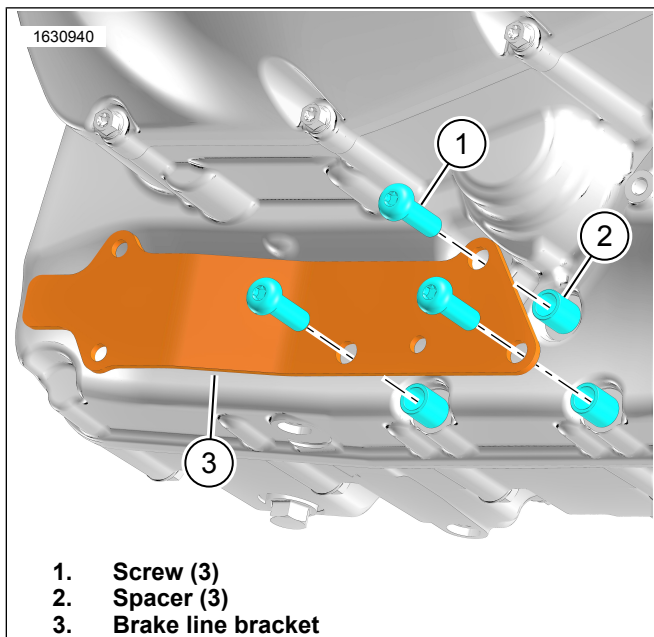


Figure 16. Brake Line Bracket

## COMPLETE

1. Install exhaust system. See service manual.
2. Install left and right foot pegs. See service manual.
3. Install main fuse. See service manual.
4. Service rear brake master cylinder. See service manual.
5. Bleed brake system. See service manual.
  - a. Flash Anti-lock Braking System (ABS).