



INSTRUCTIONS

J03166

2022-03-07



SHIFTER PEG KIT

GENERAL

Kit Number

33946-05, 33600008, 33600075, 33600154, 33600256, 33600257, 33600295, 33600303, 33600357

Models

For model fitment information, see the P&A Retail Catalog or the Parts and Accessories section of www.harley-davidson.com (English only).

⚠ WARNING

Rider and passenger safety depend upon the correct installation of this kit. If the procedure is not within your capabilities or you do not have the correct tools, have a Harley-Davidson dealer perform the installation. Improper installation of this kit could result in death or serious injury. (00308b)

Kit Contents

See Figure 1 and Table 1.

INSTALLATION

1. Remove existing shifter peg.
2. See Figure 1. **For Kits 33946-05 and 33600008:** Assemble shifter peg, if necessary:
 - a. Insert spacer tube (1) in the tread (3).
 - b. Install the tread with spacer tube insert into the chrome cover (2). Verify that the tread is oriented properly.
3. **For Kits 33946-05 and 33600008:** Install shifter peg assembly and screw (4) to shift lever. Do not tighten. **For Kits 33600075, 33600154, 33600256, 33600257, 33600295, 33600303 and 33600357:** Install shifter peg assembly using screw (4) and washer (5). Position washer between shifter peg and shift lever. Do not tighten. **For Kits 33600295 and 33600303:** Place washer under bolt head.
4. Rotate the shifter peg to the desired orientation.
5. Secure screw. Tighten.
Torque: 16.3–18.9 N·m (144–168 in-lbs) Screw

SERVICE PARTS

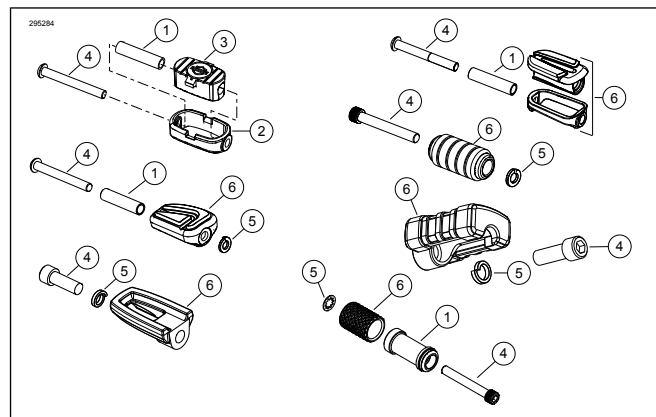


Figure 1. Shifter Peg Kit

Table 1. Service Parts

Item	Description (Quantity)	Part Number
1	Spacer (Bar & Shield)	50784-97
	Spacer (Slipstream)	12400026
	Spacer (Airflow)	12400026
2	Cover (Bar & Shield)	33947-05
	Cover (Slipstream)	Not sold separately
	Cover (Airflow)	Not sold separately
3	Tread (all Kits)	Not sold separately
4	Screw (Bar & Shield, Slipstream)	94545-03
	Screw (Slipstream)	94545-03
	Screw (Airflow)	4196
	Screw (Chrome)	10500108
	Screw (Black)	10500107
	Screw (Endgame)	10201005
	Screw ('66 Collection)	10201005
5	Lockwasher (Airflow only)	7041
	Lockwasher (Chrome)	7041
	Lockwasher (Black)	7085
	Lockwasher (Endgame)	7042
	Lockwasher ('66 Collection)	10300230
6	Shifter Peg Assembly (Bar & Shield, Slipstream)	Not sold separately
	Shifter Peg Assembly (Slipstream)	33600007
	Shifter Peg Assembly (Airflow)	33600056
	Shifter Peg Assembly (Black Airflow)	33600098
	Shifter Peg Assembly (Chrome, Kahuna)	33600251
	Shifter Peg Assembly (Black, Kahuna)	33600244
	Shifter Peg Assembly (Endgame)	Not sold separately
	Shifter Peg Assembly ('66 Collection)	33600369