



INSTRUCTIONS

J02048

2022-08-05



FOOTPEG BOLT KIT

GENERAL INFORMATION

Table 1. General Information

Kits	Suggested Tools	Skill Level ⁽¹⁾
94133-01 (Chrome)	Safety Glasses, Torque Wrench, Loctite 243 Blue	
(1) Tightening to torque value or other moderate tools and techniques required		

KIT CONTENTS

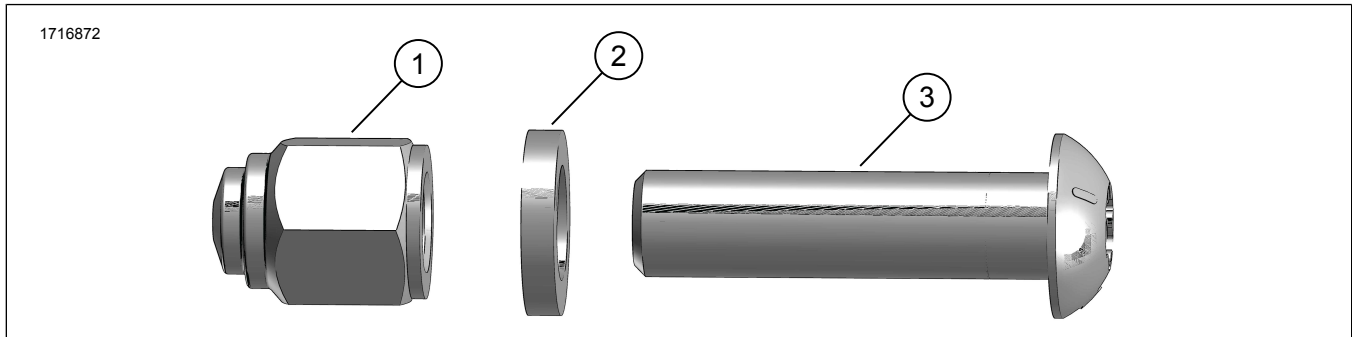


Figure 1. Kit Contents: Footpeg Screw Kit

Table 2. Kit Contents: Footpeg Screw Kit

<input checked="" type="checkbox"/>	Verify that all contents are present in the kit before installing or removing items from vehicle.				
	Item	Qty	Description	Part No.	Notes
<input type="checkbox"/>	1	2	Nut, chrome	8023	
<input type="checkbox"/>	2	2	Washer, chrome	94128-01	
<input type="checkbox"/>	3	2	Screw, TORX®, button head, chrome	4233	

GENERAL

Models

For model fitment information, see the Parts and Accessories (P&A) Retail Catalog or the Parts and Accessories section of www.harley-davidson.com.

Verify that the most current version of the instruction sheet is used. It is available at: h-d.com/isheets

Contact Harley-Davidson Customer Support Center at 1-800-258-2464 (U.S. only) or 1-414-343-4056.

Installation Requirements

⚠ WARNING

Rider and passenger safety depend upon the correct installation of this kit. If the procedure is not within your capabilities or you do not have the correct tools, have a Harley-Davidson dealer perform the installation. Improper installation of this kit could result in death or serious injury. (00308b)

NOTE

The bolts supplied in this kit are designed for a one-time installation only. If this kit is removed after initial installation, you must re-apply Loctite 243 (Blue) to the threads of the bolts.

REMOVE

1. Remove nut (3) and screw (1) from footpeg mount (4). Discard nut and screw.

INSTALLATION

1. Apply threadlocker to screw (1).
Consumable: LOCTITE 243 MEDIUM STRENGTH
THREADLOCKER AND SEALANT (BLUE) (99642-97)
2. See Figure 2. Install footpeg with **new** washer (2) and screw (1).
3. Install **new** nut (3). Tighten.
Torque: 13.6–21.7 N·m (10–16 ft-lbs)
4. Repeat steps for opposite side.

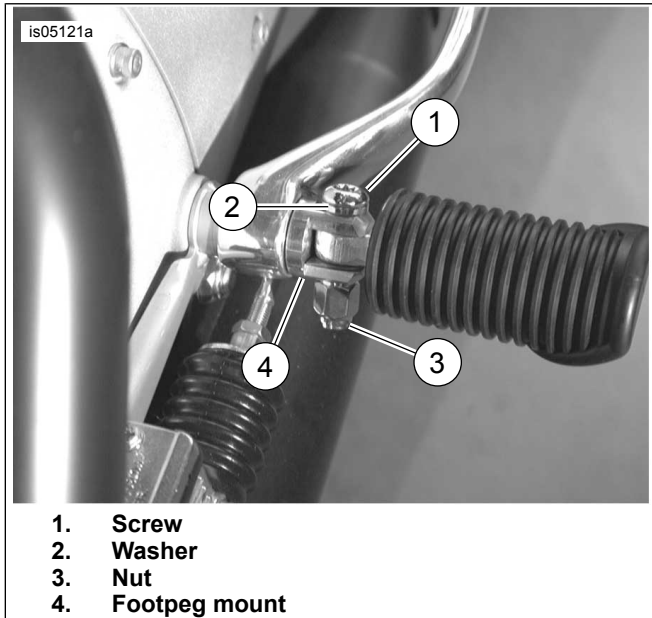


Figure 2. Footpeg Screw Installation