



INSTRUCTIONS

94100455

2023-08-04



SCREAMIN' EAGLE® OHLINS REAR SUSPENSION WITH REMOTE RESERVOIR

GENERAL INFORMATION

Table 1. General Information

Kits	Suggested Tools	Skill Level ⁽¹⁾
54000325	Safety Glasses, Torque Wrench	

(1) Tightening to torque value or other moderate tools and techniques required

KIT CONTENTS

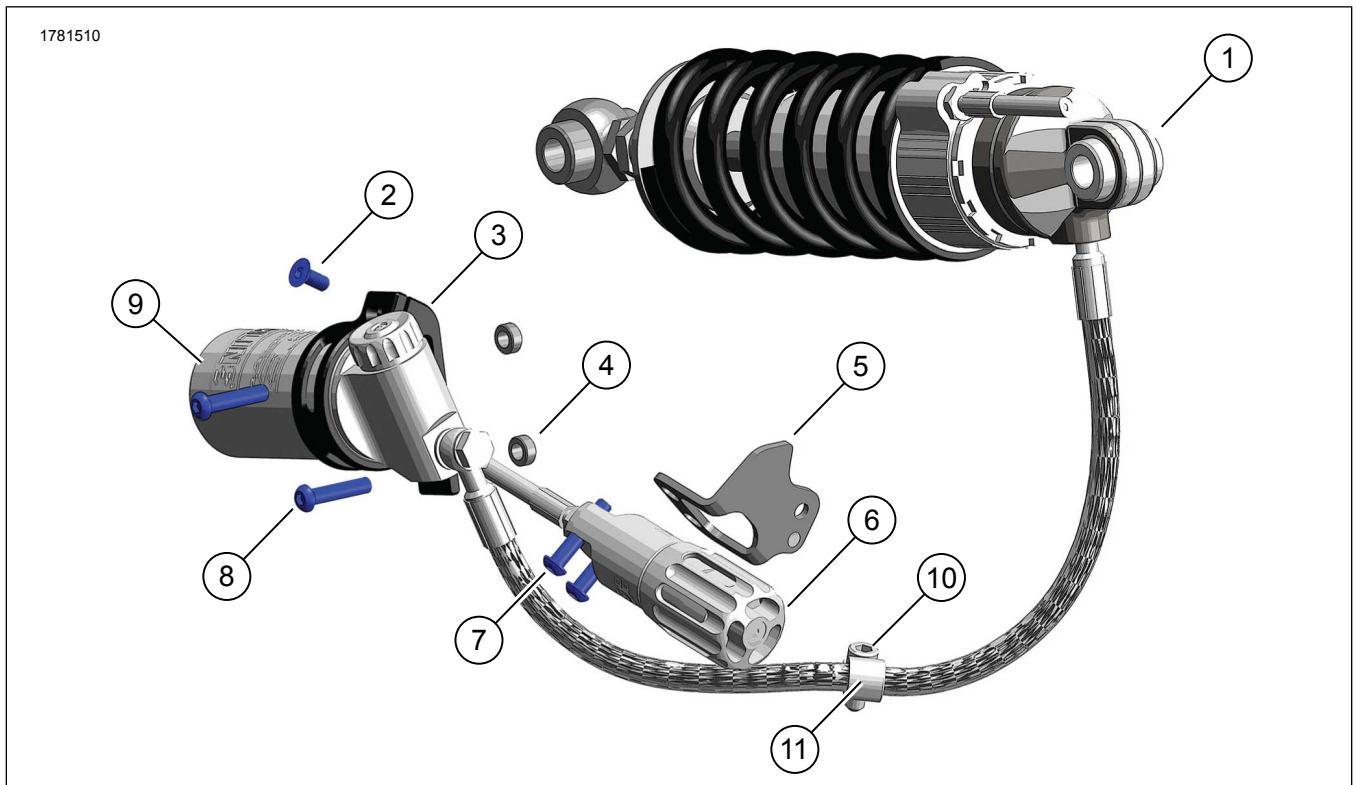


Figure 1. Kit Contents: Ohlins Rear Suspension with Remote Reservoir

Table 2. Kit Contents: Ohlins Rear Suspension with Remote Reservoir Kit

<input checked="" type="checkbox"/> Verify that all contents are present in the kit before installing or removing items from vehicle.						
Kits	Item	Qty	Description	Part No.	Notes	
<input type="checkbox"/> 54000325	1	1	Rear shock (includes kits 54000326 and 54000327)	Not sold separately		
<input type="checkbox"/> 54000326		1	Rear shock (Includes 6,9)			
<input type="checkbox"/> 54000327		1	Hardware kit, rear shock (includes 2-8)	54000327		
<input type="checkbox"/>	2	1	Screw, pinch, M6x1x14, SHCS, flat	10201180		
<input type="checkbox"/>	3	1	Clamp, remote reservoir	Not sold separately		
<input type="checkbox"/>	4	2	Spacer, 12mm x 5mm	12400236		
<input type="checkbox"/>	6	1	Pre-load adjuster			
<input type="checkbox"/>	5	1	Bracket, pre-load adjuster	Not sold separately		
<input type="checkbox"/>	7	2	Screw, M6x1.0-25, BHCS	10201423		
<input type="checkbox"/>	8	2	Screw, reservoir bracket	1327		
<input type="checkbox"/>	9	1	Remote reservoir	Not sold separately		
<input type="checkbox"/>	10	1	Screw	4705		
<input type="checkbox"/>	11	1	P-clamp	10800224		

GENERAL

Models

For model fitment information, see the Parts and Accessories (P&A) Retail Catalog or the Parts and Accessories section of www.harley-davidson.com.

Verify that the most current version of the instruction sheet is used. It is available at: h-d.com/isheets

Contact Harley-Davidson Customer Support Center at 1-800-258-2464 (U.S. only) or 1-414-343-4056.

Installation Requirements

Item is available at your local Harley-Davidson dealership:

- **Models Without External Pre-Load Adjuster:** Separate purchase of Screamin Eagle OHLINS Side Cover Kit (Part No. 54000321) is required.

▲ WARNING

Rider and passenger safety depend upon the correct installation of this kit. Use the appropriate service manual procedures. If the procedure is not within your capabilities or you do not have the correct tools, have a Harley-Davidson dealer perform the installation. Improper installation of this kit could result in death or serious injury. (00333b)

NOTE

This instruction sheet references service manual information. A service manual for the year and model motorcycle is required for this installation and is available from:

- A Harley-Davidson dealer.
- H-D Service Information Portal, a subscription-based access available for most 2001 and newer models. For more information see *Frequently ask questions about subscriptions*.

PREPARE

▲ WARNING

To prevent accidental vehicle start-up, which could cause death or serious injury, remove main fuse before proceeding. (00251b)

1. Remove main fuse. See service manual.
2. Remove seat. See service manual.
3. Remove fender. See service manual.

REMOVE

1. Remove Original Equipment (OE) rear shock. See service manual.
 - a. **Models with remote pre-load adjuster:** Remove battery cover.
 - b. **Models without remote pre-load adjuster:** Replace ABS bracket with kit (Part No. 54000321).
2. Install battery cover if removed in step 1.

3. Install wheel speed sensor, if removed. See service manual.
4. Remove wire harness clamp from battery cover.
5. Remove side cover mounting pin.

INSTALL

Shock Body

1. Protect reservoir, adjuster and other cosmetic surfaces with tape or similar.
2. Loosely install rear of shock into swing-arm with reservoir hose pointing down. See service manual.
 - a. Pre-load adjuster hose should wrap around reservoir hose.
3. Route pre-load adjuster through frame toward rear of vehicle.
 - a. Hose should be outboard of wiring harness.
4. Route remote reservoir vertically through frame, past head oil lines and out past exhaust header.

Pre-Load Adjuster Bracket

1. Remove wiring harness clip from ABS module bracket.
2. See Figure 3. Slide clip(1) to **new** pre-load adjuster bracket (4).
3. Install pre-load adjuster bracket screw (2) and washer (3). Tighten.
Torque: 10.2–12.9 N·m (90–114 **in-lbs**)

Pre-Load Adjuster

1. Remove dipstick and cover fill neck.
2. See Figure 3. Install pre-load adjuster (5) to pre-load adjuster bracket (4) with screws (6). Tighten.
Torque: 10.2–12.9 N·m (90–114 **in-lbs**)
3. Install dipstick and cover grommet pin.
4. Install lower side cover.

Remote Reservoir

1. See Figure 2. Secure hose with P-clamp (2) and screw (1) to vehicle.
2. See Figure 4. Install side cover (2), reservoir clamp (1), screws (4) and spacers (3).
3. Tighten screws (4).
Torque: 7.8–9.5 N·m (69–84 **in-lbs**)

4. Carefully insert remote reservoir (6) into reservoir bracket (1).
 - a. See Figure 5. Orient to optimize hose routing.
5. Install pinch screw (5). Tighten.
Torque: 2.9 N·m (26 **in-lbs**)

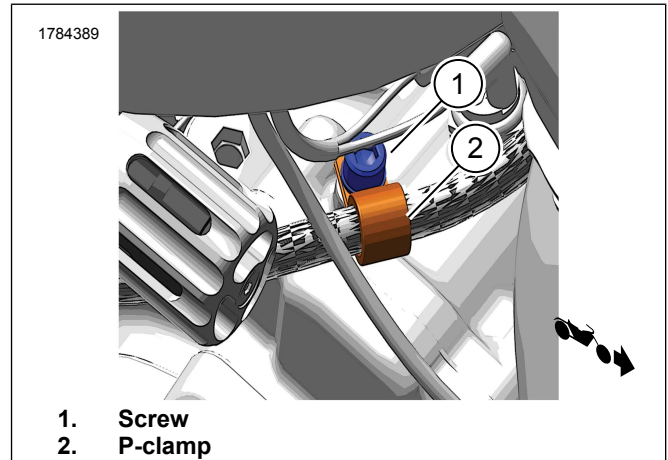


Figure 2. Install P-clamp and Screw

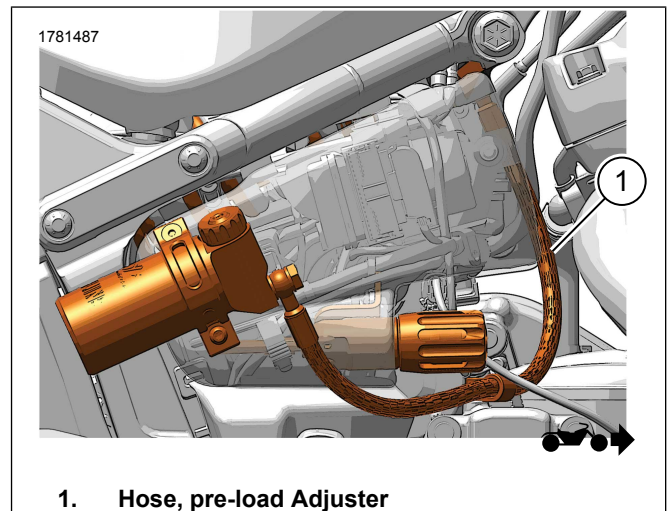


Figure 3. Route Pre-Load Adjuster Hose

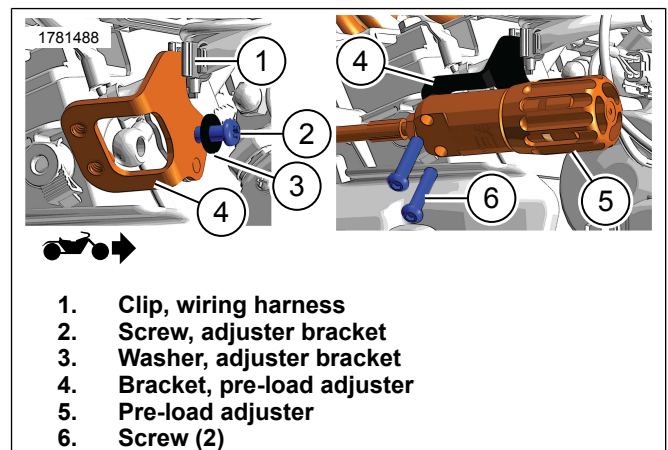


Figure 4. ABS Module Bracket and Pre-Load Adjuster

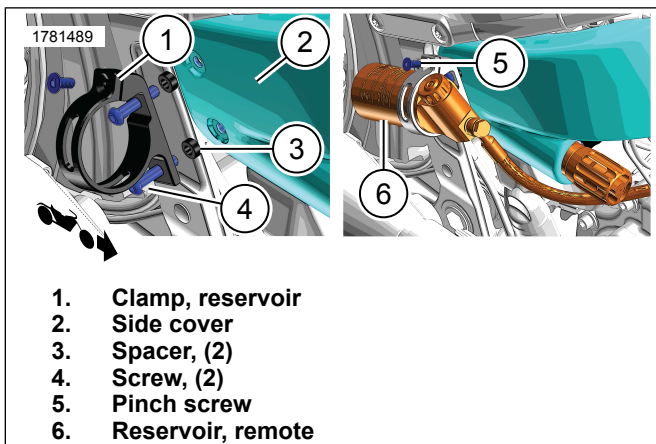


Figure 5. Remote Reservoir

COMPLETE

1. Install shock lower, upper and pinch shock screws. See service manual.
2. Install fender. See service manual.
3. Install seat. After installing seat, pull up on seat to verify that it is secure. See service manual.
4. Install main fuse. See service manual.

Table 3. Screamin' Eagle / Ohlins Softail Rear Suspension Preload

Rear Suspension Preload Table																	
Without Saddlebags - Additional Weight of Passenger, Cargo and Accessories																	
LB		0	10	20	30	40	50	60	70	80	90	100	110	120	130	140	150
KG		0	5	9	14	18	23	27	32	36	41	45	50	54	59	64	68
With Saddlebags - Additional Weight of Passenger, Cargo and Accessories																	
LB		0	10	20	30	40	50	60	70	80	90	100	110	120			
KG		0	5	9	14	18	23	27	32	36	41	45	50	54			
RIDER WEIGHT		FULL TURNS OF PRELOAD ADJUSTER FROM MINIMUM ¹															
LB	KG																
150	68	0.0	1.5	3.0	4.5	5.5	7.0	8.5	10.0	11.5	13.0	14.5	15.5	17.0	18.5	20.0	
160	73	0.0	1.5	3.0	4.5	5.5	7.0	8.5	10.0	11.5	13.0	14.5	15.5	17.0	18.5	20.0	
170	77	0.5	2.0	3.5	5.0	6.5	8.0	9.5	10.5	12	13.5	15.0	16.5	18.0	19.5	20.0	
180	82	2.0	3.0	4.5	6.0	7.5	9.0	10.5	12.0	13.0	14.5	16.0	17.5	19.0	20.0		
190	86	3.0	4.5	5.5	7.0	8.5	10.0	11.5	13.0	14.5	15.5	17.0	18.5	20.0			
200	91	4.0	5.5	7.0	8.0	9.5	11.0	12.5	14.0	15.5	16.5	18.0	19.5	20.0			
210	95	5.0	6.5	8.0	9.0	10.5	12.0	13.5	15.0	16.5	18.0	19.0	20.0				
220	100	6.0	7.5	9.0	10.5	11.5	13.0	14.5	16.0	17.5	19.0	20.0					
230	104	7.0	8.5	10.0	11.5	13.0	14.0	15.5	17.0	18.5	20.0						
240	109	8.0	9.5	11.0	12.5	14.0	15.0	16.5	18.0	19.5	20.0						
250	113	9.0	10.5	12.0	13.5	15.0	16.5	18.0	19.5	20.0							
260	118	10.0	11.5	13.0	14.5	16.0	17.5	19.5	20.0								
270	122	11.5	12.5	14.0	15.5	17.0	18.5	20.0									

NOTE

- Do Not exceed GVWR for any loading conditions
- ¹ To determine minimum preload setting:
 - a. Turn adjuster fully counter clockwise until it stops
 - b. Turn adjuster clockwise until pressure/resistance felt
 - c. Turn adjuster counter clockwise to next click