



# INSTRUCTIONS

94100371

2023-10-19



## SCREAMIN' EAGLE EXTREME WEDGE AIR CLEANER

### GENERAL INFORMATION

Table 1. General Information

Kits	Suggested Tools	Skill Level <sup>(1)</sup>
29400459, 29400460, 29400466, 29400467	Safety Glasses, Torque Wrench, Loctite blue	
<i>(1) Tightening to torque value or other moderate tools and techniques required</i>		

### KIT CONTENTS

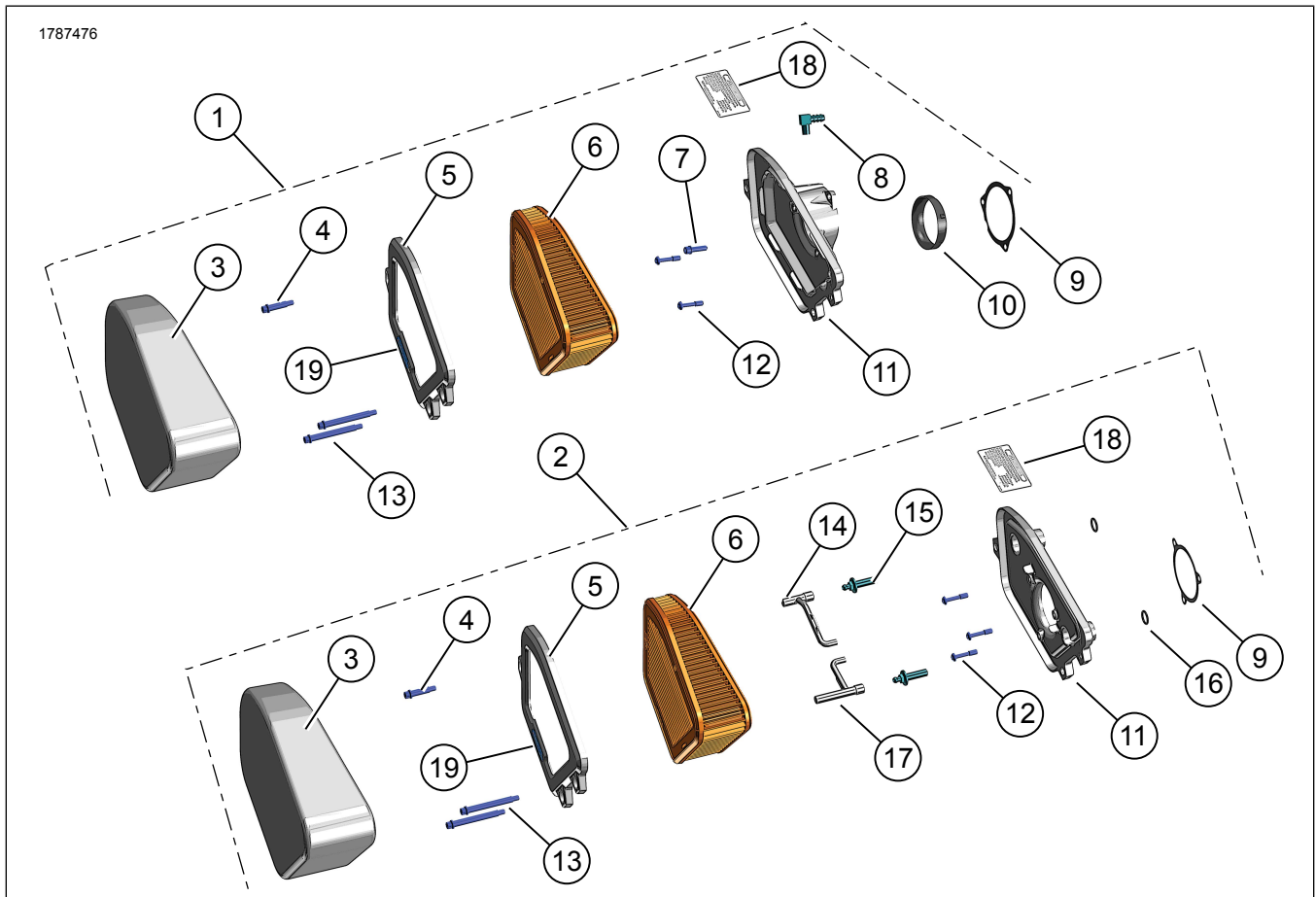


Figure 1. Kit Contents: Screamin' Eagle Extreme Wedge Air Cleaner

**Table 2. Kit Contents: Screamin' Eagle Extreme Wedge Air Cleaner Kit**

<input checked="" type="checkbox"/>	Verify that all contents are present in the kit before installing or removing items from vehicle.				
	Item	Qty	Description	Part No.	Notes
<input type="checkbox"/>	1	1	Screamin' Eagle extreme wedge air cleaner kit	Not sold separately	Kits 29400459 (black), 29400460 (chrome)
<input type="checkbox"/>	2	1	Screamin' Eagle extreme wedge air cleaner kit	Not sold separately	Kits 29400466 (black), 29400467 (chrome)
<input type="checkbox"/>	3	1	Rain sock	29400482	All Kits
<input type="checkbox"/>	4	1	Screw, 1/4-20 UNJC-3AX1.375	10200905	All Kits
<input type="checkbox"/>	5	1	Air cleaner cover, black	Not sold separately	Kits 29400459, 29400466
<input type="checkbox"/>			Air cleaner cover, chrome	Not sold separately	Kits 29400460, 29400467
<input type="checkbox"/>	6	1	Air filter, extreme wedge	29400461	All kits
<input type="checkbox"/>	7	1	Screw	4741A	Kits 29400459, 29400460
<input type="checkbox"/>	8	1	Fitting, oil line	62700351	All kits
<input type="checkbox"/>	9	1	Gasket, throttle body	29000382	Kits 29400459, 29400460
<input type="checkbox"/>				29000149	Kits 29400466, 29400467
<input type="checkbox"/>	10	1	Adapter, throttle body	29500035	Kits 29400459, 29400460
<input type="checkbox"/>	11	1	Backplate	Not sold separately	All kits
<input type="checkbox"/>	12	3	Screw, captive	869	Kits 29400466, 29400467
<input type="checkbox"/>		2			Kits 29400459, 29400460
<input type="checkbox"/>	13	2	Screw, shoulder, long	10201383	All kits
<input type="checkbox"/>	14	1	Breather hose, rear	29400337	Kits 29400466, 29400467
<input type="checkbox"/>	15	2	Screw, breather	29465-99	Kits 29400466, 29400467
<input type="checkbox"/>	16	2	O-ring	11292	Kits 29400466, 29400467
<input type="checkbox"/>	17	1	Breather hose, front	29400502	Kits 29400466, 29400467
<input type="checkbox"/>	18	1	Warning label, chrome	28012-09	Kits 29400460, 29400467
<input type="checkbox"/>			Warning label, black	14000377	Kits 29400459, 29400466
<input type="checkbox"/>	19	1	Scream' Eagle medallion	14101041	All kits

**GENERAL**

**Models**

For model fitment information, see the Parts and Accessories (P&A) Retail Catalog or the Parts and Accessories section of [www.harley-davidson.com](http://www.harley-davidson.com).

Verify that the most current version of the instruction sheet is used. It is available at: [h-d.com/isheets](http://h-d.com/isheets)

Contact Harley-Davidson Customer Support Center at 1-800-258-2464 (U.S. only) or 1-414-343-4056.

**Installation Requirements**

**NOTICE**

**You must recalibrate the ECM when installing this kit. Failure to properly recalibrate the ECM can result in severe engine damage. (00399b)**

See a Harley-Davidson dealer for Electronic Control Module (ECM) calibration.

## ⚠ WARNING

When servicing the fuel system, do not smoke or allow open flame or sparks in the vicinity. Gasoline is extremely flammable and highly explosive, which could result in death or serious injury. (00330a)

## ⚠ WARNING

Rider and passenger safety depend upon the correct installation of this kit. Use the appropriate service manual procedures. If the procedure is not within your capabilities or you do not have the correct tools, have a Harley-Davidson dealer perform the installation. Improper installation of this kit could result in death or serious injury. (00333b)

### NOTE

This instruction sheet references service manual information. A service manual for the year and model motorcycle is required for this installation and is available from:

- A Harley-Davidson dealer.
- H-D Service Information Portal, a subscription-based access available for most 2001 and newer models. For more information see *Frequently ask questions about subscriptions*.

## PREPARE

## ⚠ WARNING

To prevent accidental vehicle start-up, which could cause death or serious injury, remove main fuse before proceeding. (00251b)

1. Remove main fuse. See service manual.

## REMOVE

1. Remove Original Equipment (OE) air cleaner. See service manual.
2. See Figure 2. Remove and discard induction module support bracket.

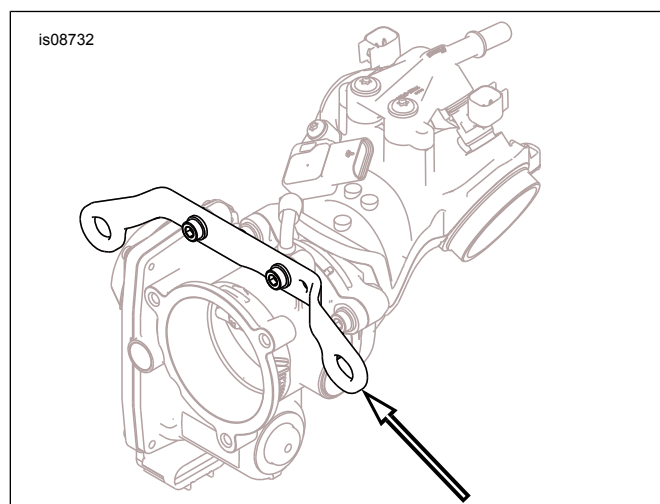


Figure 2. Remove Induction Module Support Bracket

## INSTALL

### Air Cleaner

## ⚠ WARNING

Use only supplied air cleaner cover. Use of another air cleaner cover could cause element failure and detachment of the air cleaner cover, which could distract the rider and result in death or serious injury. (00596b)

### NOTE

When servicing the air cleaner, apply *LOCTITE 243 MEDIUM STRENGTH THREADLOCKER AND SEALANT (BLUE)* (99642-97) to the threads of all fasteners.

1. **Kits 29400459, 29400460:** See Figure 1. If using OE throttle body, insert throttle body adapter (10) into backplate (11).
2. Install gasket (9) to backplate (11).
  - a. Remove protective strip from gasket.
  - b. Attach adhesive side of gasket to backplate.
3. Install breather fitting (8) into backplate (11) so it aligns with OE breather hose.
4. **Kits 29400466, 29400467:** Install O-rings (16) into backplate (11) at interface to cylinder heads.
5. Install backplate to throttle body.
  - a. **Kits 29400466, 29400467:** Install captive screws (12).
  - b. **Kits 29400459, 29400460:** Install OE socket head screw (7) at top location. Tighten.  
Torque: 6.2–6.8 N·m (55–60 **in-lbs**)
6. Install backplate to cylinder heads.
  - a. **Kits 29400466, 29400467:** Install breather screws (15).
  - b. **Kits 29400459, 29400460:** Apply threadlocker to OE screw. Tighten.  
Torque: 30–32.5 N·m (22–24 ft-lbs)  
*LOCTITE 243 MEDIUM STRENGTH THREADLOCKER AND SEALANT (BLUE)* (99642-97)
7. **Kits 29400466, 29400467:** Install breather hoses (14,17) to breather screws.
8. Assemble air filter (6), air cleaner cover (5) and shoulder screws (4,13). Tighten.  
Torque: 6.2–6.8 N·m (55–60 **in-lbs**)

### NOTE

- Air filter is **PRE-OILED** and ready to install.

- *Install rain sock (3) over air filter element in wet or rainy conditions to prevent water intrusion.*

## COMPLETE

1. Install main fuse. See service manual.

## MAINTENANCE

### Air Filter Element

1. Inspect air filter element every:  
Length/Dimension/Distance: 8,000 km (4,971 mi)
  - a. Inspect more often under dusty conditions.  
Length/Dimension/Distance: 8,000 km (4,971 mi)

2. Replace air filter every:  
Length/Dimension/Distance: 8,000 km (4,971 mi)

3. Clean the element:

#### NOTE

- *The use of cleaning, drying or oiling methods or products other than those shown, damages the filter and can void the manufacturer's warranty.*
- *K&N Air Filter Cleaner is available from a Harley-Davidson dealer, either alone [0.95L (1 qt) sprayer bottle, Part No. 99883-88T] or as a 0.35L (12 fl oz) sprayer bottle as part of the Filter Care Service Kit (Part No. 99850-92T).*
- *K&N Air Filter Oil is also available from a Harley-Davidson dealer, either alone [347 g (12.25 oz) aerosol can, Part No. 99882-88T] or as a 184 g (6.5 oz) aerosol can as part of the Filter Care Service Kit.*
- *DO NOT OVER-OIL THE AIR FILTER. Over-oiling can interfere with the proper performance of the engine and/or certain engine components. If oil is still draining or dripping from the filter media 20 minutes after oiling, clean and oil the filter element again.*
  - a. Remove air filter element by removing the three screws securing the filter cover.
  - b. Tap element to dislodge any loose dirt. Gently brush with a soft bristle brush.
  - c. Spray air filter cleaner liberally onto cotton filter media and let soak for ten minutes, OR roll or soak the cotton filter media in a shallow pan of air filter cleaner. Remove immediately, and let soak for ten minutes.
  - d. Rinse off the filter media (flowing from the **clean** side to the dirty side), with low-pressure tap water.
  - e. After rinsing, shake off all excess water, and let the filter media air dry. DO NOT use compressed air or a heat gun to speed drying.
  - f. After filter media is **completely** dry, EITHER carefully use a squeeze bottle to deposit air filter oil along each pleat, once only, OR spray oil along each pleat, once only, holding the spray nozzle away from the media approximately:

Length/Dimension/Distance: 76 mm (3 in)

- g. **Let oil absorb into the filter media for 20 minutes before proceeding.** After 20 minutes, inspect the filter media. Carefully apply oil to any remaining visible white spots on the filter media. Allow oil to absorb.

4. Install filter element.

- a. See Figure 1. Install air filter element (13) and cover (14).

#### NOTE

*Clean mounting surface of filter prior to assembly.*

- b. Install screws (12). Tighten.  
Torque: 6.2–6.8 N·m (55–60 **in-lbs**)