



# INSTRUCTIONS

J06509

2022-09-28



## COMPACT BACKREST PAD KITS

### GENERAL INFORMATION

Table 1. General Information

Kits	Suggested Tools	Skill Level <sup>(1)</sup>
52300556A, 52300555A, 52300558A, 52300559A, 52300617A	Safety Glasses, Torque Wrench	
(1) Tightening to torque value or other moderate tools and techniques required		

### KIT CONTENTS

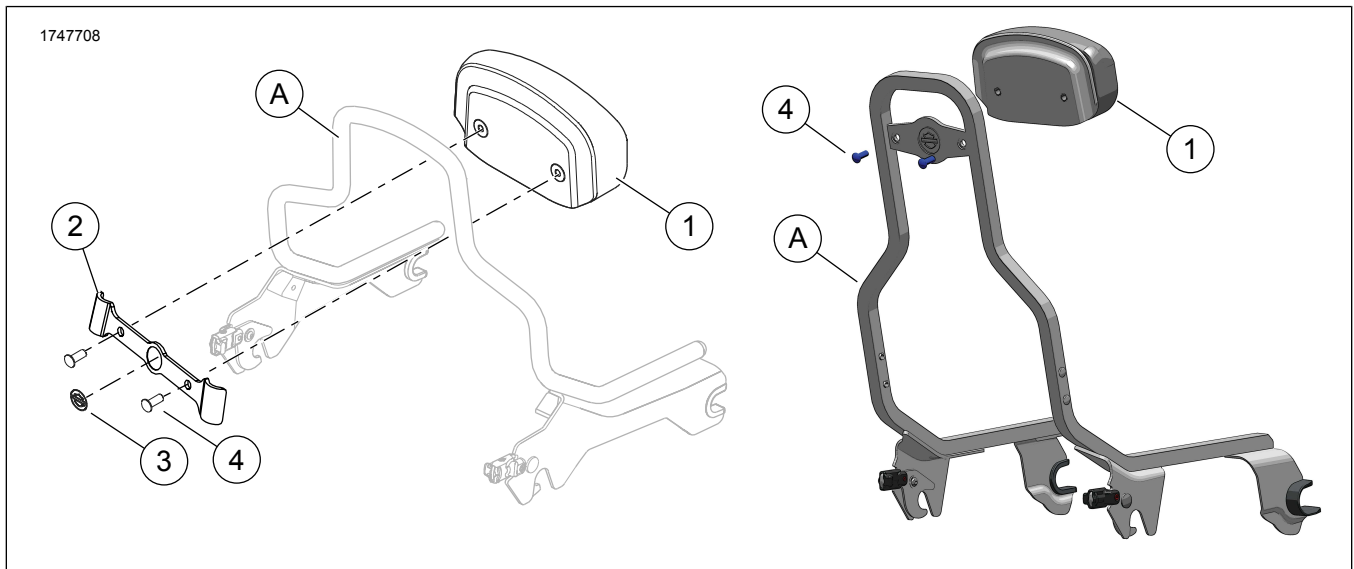


Figure 1. Kit Contents: Compact Backrest Pad Kit

Table 2. Kit Contents: Compact Backrest Pad Kit

Verify that all contents are present in the kit before installing or removing items from vehicle.					
<input checked="" type="checkbox"/>	Item	Qty	Description	Part No.	Notes
<input type="checkbox"/>	1	1	Backrest pad	Not sold separately	
<input type="checkbox"/>	2	1	Bracket, mounting	52300565A	
<input type="checkbox"/>	3	1	Medallion	Not sold separately	
<input type="checkbox"/>	4	2	Screw	94385-92T	
Items mentioned in text, but not included in kit					
<input checked="" type="checkbox"/>	A	1	Original Equipment (OE) Detachable sissy bar upright		

### GENERAL

#### Models

For model fitment information, see the Parts and Accessories (P&A) Retail Catalog or the Parts and Accessories section of [www.harley-davidson.com](http://www.harley-davidson.com).

Verify that the most current version of the instruction sheet is used. It is available at: [h-d.com/isheets](http://h-d.com/isheets)

Contact Harley-Davidson Customer Support Center at 1-800-258-2464 (U.S. only) or 1-414-343-4056.



## Installation Requirements

### ⚠ WARNING

Rider and passenger safety depend upon the correct installation of this kit. If the procedure is not within your capabilities or you do not have the correct tools, have a Harley-Davidson dealer perform the installation. Improper installation of this kit could result in death or serious injury. (00308b)

## INSTALL (TOURING/SOFTAIL)

1. See Figure 1. Position backrest pad (1) so that contour in base aligns with top of OE sissy bar upright (A).

### NOTE

- Side of bracket (3) are not symmetrical. Width at top is narrower than width at bottom.
  - Use a mixture of 50:50 isopropyl alcohol and water solution to thoroughly clean surface of OE upright (A) before installing bracket (2). Allow to dry completely. Install at room temperature. 10–32 °C (50–90 °F)
2. Remove adhesive backing from left and right sides of bracket (3).
  3. See Figure 1. Place mounting bracket against pad so that OE sissy bar upright (A) is between pad (1) and bracket (2).
  4. Position and press bracket (2) firmly onto OE sissy bar upright (A).
  5. Insert screws (4). Tighten.  
Torque: 6.8 N·m (60 in-lbs)

## MEDALLION ALIGNMENT

1. See Figure 1. Use a mixture of 50:50 isopropyl alcohol and water solution to thoroughly clean surface of OE sissy bar upright (A) before installing bracket (2). Allow to dry completely. Install at room temperature.  
Temperature: 10–32 °C (50–90 °F)

2. See Figure 2. Place a three inch piece of masking tape (2) centered over bar and shield of medallion (1).
3. Remove paper from adhesive backing.

### NOTE

- See Figure 3. Side of bracket (3) are not symmetrical. Width at top is narrower than width at bottom.
  - See Figure 3. Align medallion horizontal bar (1) with lower edge (2) of bracket. These two must be parallel.
4. See Figure 2. Install medallion to bracket.
    - a. Holding tape, lower medallion into recessed area on bracket.
    - b. Apply uniform pressure for one minute.

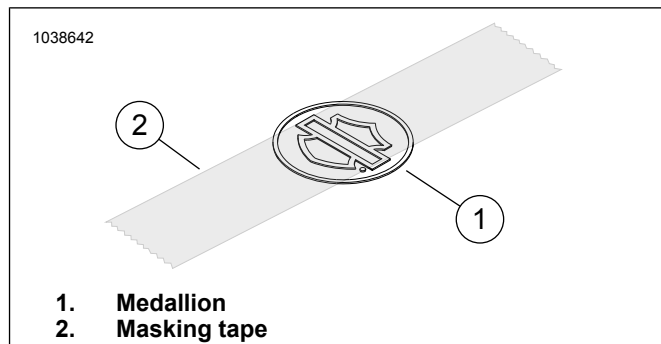


Figure 2. Apply Tape to Medallion

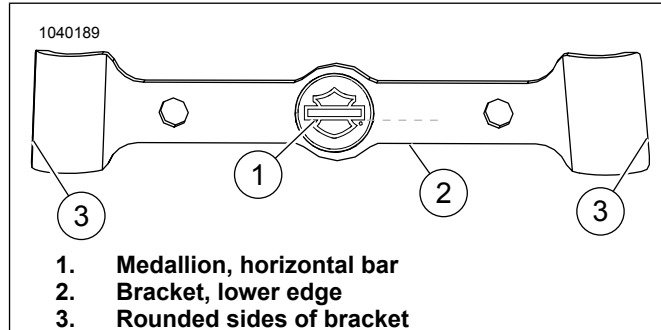


Figure 3. Medallion Alignment

## BRACKET ATTACHMENT

1. See Figure 1. If necessary, cut plastic rain seal away from pre-cut screw holes in backrest pad (1) to prevent plastic from catching in the threads.
2. Position backrest pad (1) so that contour in base aligns with top OE of sissy bar upright (A).

### NOTE

- See Figure 3. Sides of bracket (3) are not symmetrical. Width at top is narrower than width at bottom.
  - See Figure 1. Use a mixture of 50:50 isopropyl alcohol and water solution to thoroughly clean surface of OE sissy bar upright (A) before installing bracket (2). Allow to dry completely. Install at room temperature. 10–32 °C (50–90 °F)
3. See Figure 3. Remove adhesive backing from left and right sides of bracket (3).
  4. See Figure 1. Place mounting bracket (2) against pad (1) so that OE sissy bar upright (A) is between pad and bracket.
  5. Position and press bracket (2) firmly onto OE sissy bar upright (A).
  6. See Figure 1. Insert screws (4). Tighten.  
Torque: 6.8 N·m (60 in-lbs)

## INSTALL (RH975)

1. See Figure 1. Align pad (1) with bracket (2).
2. Install screws (4). Tighten.  
Torque: 6.8 N·m (60 in-lbs)