



# INSTRUCTIONS

94100410

2023-01-09



## MILWAUKEE EIGHT ENGINE ACCENT KIT

### GENERAL INFORMATION

Table 1. General Information

Kits	Suggested Tools	Skill Level <sup>(1)</sup>
92500122, 92500121	Safety Glasses, Torque Wrench	
<i>(1) Tightening to torque value or other moderate tools and techniques required</i>		

### KIT CONTENTS

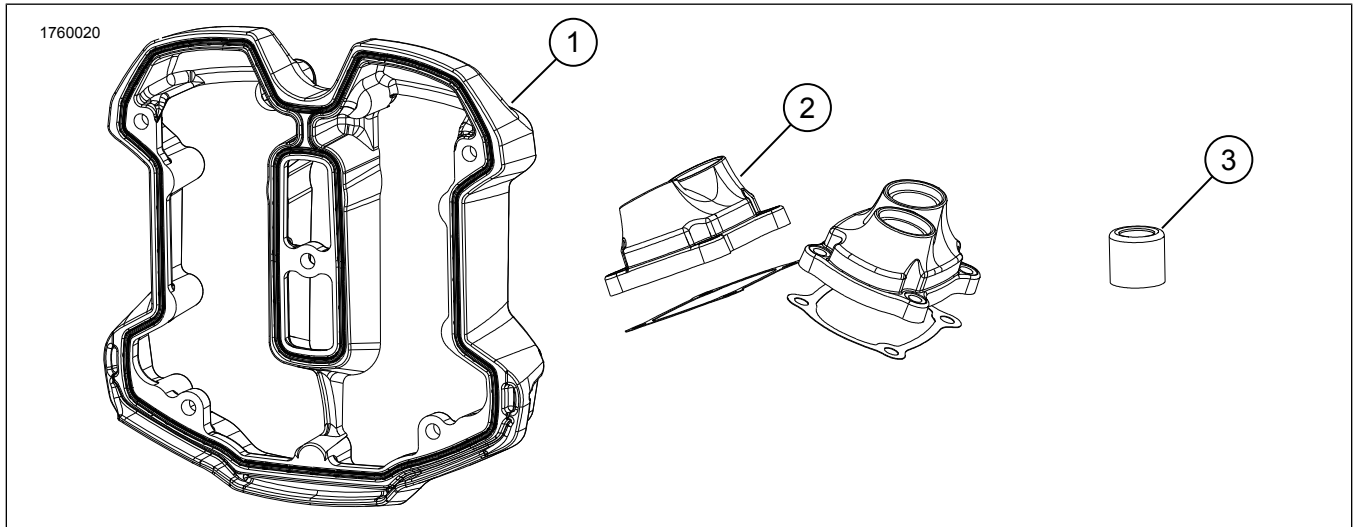


Figure 1. Kit Contents: Milwaukee Eight Engine Accent Kit

Table 2. Kit Contents: Milwaukee Eight Engine Accent Kit

<input checked="" type="checkbox"/>	Verify that all contents are present in the kit before installing or removing items from vehicle.				
Item	Qty	Description	Part No.	Notes	
<input type="checkbox"/>	1	2	Lower rocker cover	Not sold separately	
<input type="checkbox"/>	2	2	Lifter cover	Not sold separately	
<input type="checkbox"/>	3	4	Spring cap	Not sold separately	

### GENERAL

#### Models

For model fitment information, see the Parts and Accessories (P&A) Retail Catalog or the Parts and Accessories section of [www.harley-davidson.com](http://www.harley-davidson.com).

Verify that the most current version of the instruction sheet is used. It is available at: [h-d.com/isheets](http://h-d.com/isheets)

Contact Harley-Davidson Customer Support Center at 1-800-258-2464 (U.S. only) or 1-414-343-4056.

### Installation Requirements

#### ⚠ WARNING

Rider and passenger safety depend upon the correct installation of this kit. Use the appropriate service manual procedures. If the procedure is not within your capabilities or you do not have the correct tools, have a Harley-Davidson dealer perform the installation. Improper installation of this kit could result in death or serious injury. (00333b)

#### NOTE

This instruction sheet references service manual information. A service manual for the year and model motorcycle is required for this installation and is available from:

- A Harley-Davidson dealer.
- H-D Service Information Portal, a subscription-based access available for most 2001 and newer models. For more information see *Frequently ask questions about subscriptions*.

This item is available at a local Harley-Davidson dealership.

Separate purchase of Camshaft Service Kit (Part No. 25700731) is required for installation.

## PREPARE

### NOTE

Reference a service manual for the following procedures.

1. Use low-pressure compressed air to clean exterior surfaces of engine.
2. Remove seat.
3. Disconnect negative battery cable.
4. Remove fuel tank.
5. Remove air filter.
6. Remove air filter backplate assembly.
7. Remove mid-frame air deflectors, if equipped.
8. Disconnect spark plug cables from spark plugs.
9. Disconnect automatic compression release connectors.
10. Disconnect fuel injector connectors.
11. Disconnect knock sensor connectors.
12. Disconnect horn connector.
13. Remove upper front engine mount.
14. Remove upper cooling lines.
15. Remove upper rocker covers.
16. Remove rocker arms.
17. Remove breathers.

## REMOVE

### Lower Rocker Cover

1. See Figure 7. Remove screws (3) and stud (4).

### NOTE

Engine may need to be rotated to provide clearance.

2. Remove lower rocker cover (2).

3. Discard gasket (1).

## Spring Cover Cap

1. Remove pushrods.
2. Remove pushrod covers.
  - a. See Figure 2. Insert blade of screwdriver in tab (1) of spring cap retainer.
  - b. While pushing down on spring cap (2) with special tool, rotate bottom of retainer outboard.

Special Tool: PUSHROD TUBE CLIP REMOVER AND INSTALLER (94086-09)
3. Remove pushrod covers.
  - a. Collapse upper and lower pushrod covers.
4. Disassemble pushrod cover assemblies.
5. Discard O-rings.

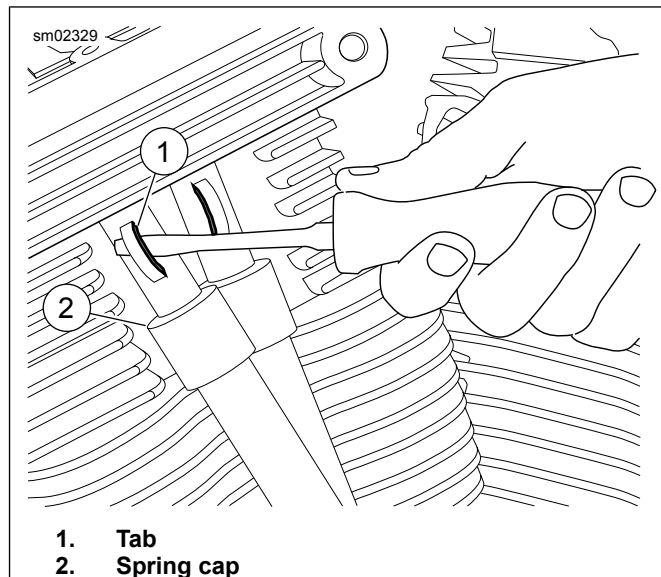


Figure 2. Removing Spring Cap Retainer

## Lifter Cover

1. See Figure 3. Remove four screws (1).
2. Remove lifter cover (2) and gasket (3). Discard gasket.

## INSTALL

### Lifter Cover

1. See Figure 3. Install lifter cover (2), **new** gasket (3) and screws (1).
2. Tighten in a cross-wise pattern.  
Torque: 15–17.5 N·m (133–155 **in-lbs**) *Lifter cover screw*

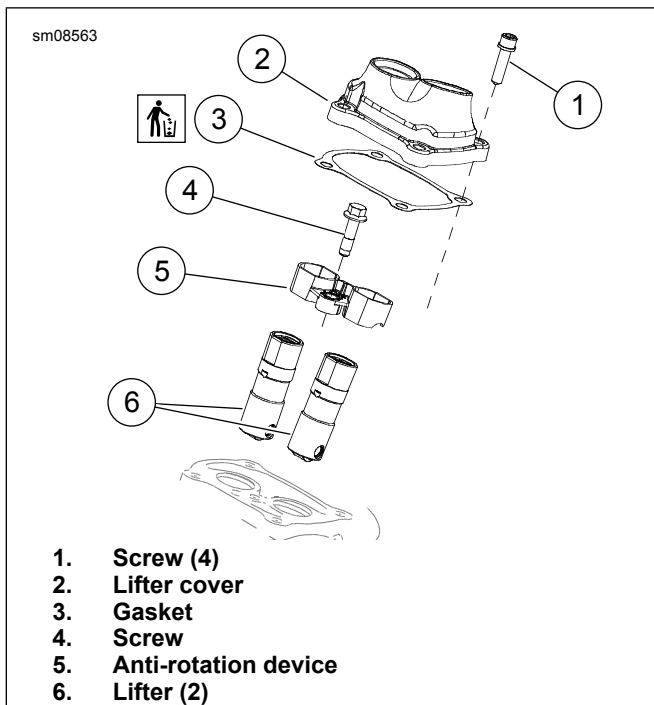


Figure 3. Lifter Cover

### Spring Cover Cap

1. See Figure 4. Apply clean engine oil to **new** O-rings (1, 6 and 8).
2. Install upper O-ring (1) on upper pushrod cover (2).
3. Slide **new** spring cap (4) and spring (5) onto body of upper pushrod cover. Move parts up until spring cap contacts upper O-ring seat.
4. Install middle O-ring (6) into groove on top of lower pushrod cover (7).
5. Apply clean engine oil on upper pushrod cover.
6. Slide straight end of upper pushrod cover into top end of lower pushrod cover.
7. Wipe pushrod covers clean.
8. Install lower O-ring (8) on lower pushrod cover.
9. Install pushrod covers.
  - a. Compress pushrod cover assembly and fit into lifter cover bore.
  - b. Extend assembly into cylinder head bore.
  - c. Verify that ends of pushrod cover fit snugly into cylinder head and lifter cover bores.
10. Install spring cap retainers.
  - a. See Figure 5. Insert upper edge of spring cap retainer into cylinder head bore.

- b. Insert blade of small screwdriver between bottom edge of spring cap retainer and top of spring cap.
- c. Press spring cap down with special tool and slide bottom edge of retainer toward tip of screwdriver.  
Special Tool: PUSHROD TUBE CLIP REMOVER AND INSTALLER (94086-09)
- d. Verify that spring cap retainer seats tightly against upper pushrod cover.

11. Apply assembly lube to pushrod ends.

Consumable: SCREAMIN' EAGLE ASSEMBLY LUBE (11300002)

#### NOTE

*If installing original pushrods, install in original location and orientation. Use 10.301 inch long (light blue stripes) as intake and 10.531 inch long (yellow stripes) as exhaust.*

12. Install pushrods.

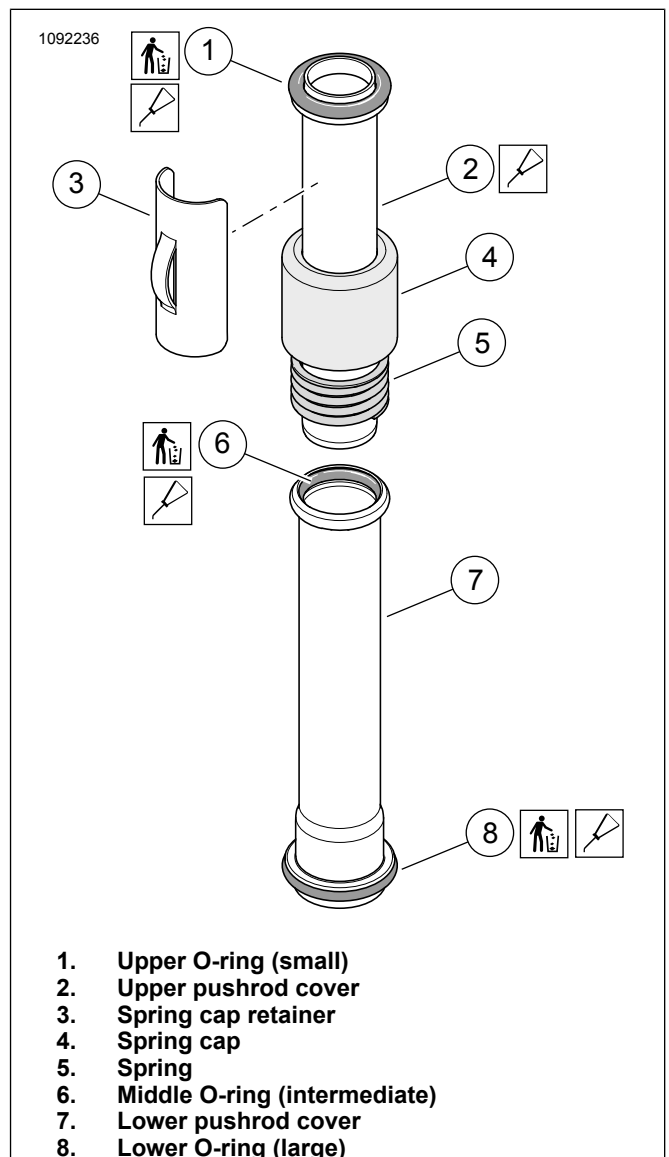


Figure 4. Assembled Pushrod Cover



Figure 5. Install Spring Cap Retainers

## Lower Rocker Cover

1. See Figure 7. Install **new** gasket (1).
2. Install lower rocker cover (2).
3. Apply threadlocker to screws (3) and stud (4).  
Consumable: LOCTITE 243 MEDIUM STRENGTH THREADLOCKER AND SEALANT (BLUE) (99642-97)
4. See Figure 6. Install screws (3) and stud (4). Tighten in sequence shown.  
Torque: 10.2–13.6 N·m (7.5–10.0 ft-lbs) *Lower rocker cover screw*  
Torque: 10.2–13.6 N·m (7.5–10.0 ft-lbs) *Lower rocker cover stud*

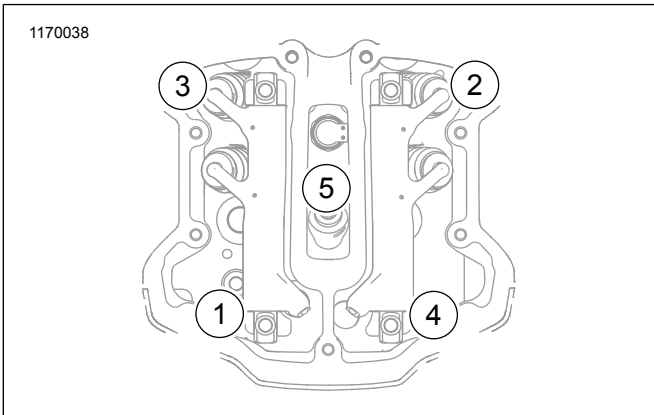


Figure 6. Lower Rocker Cover Torque Sequence

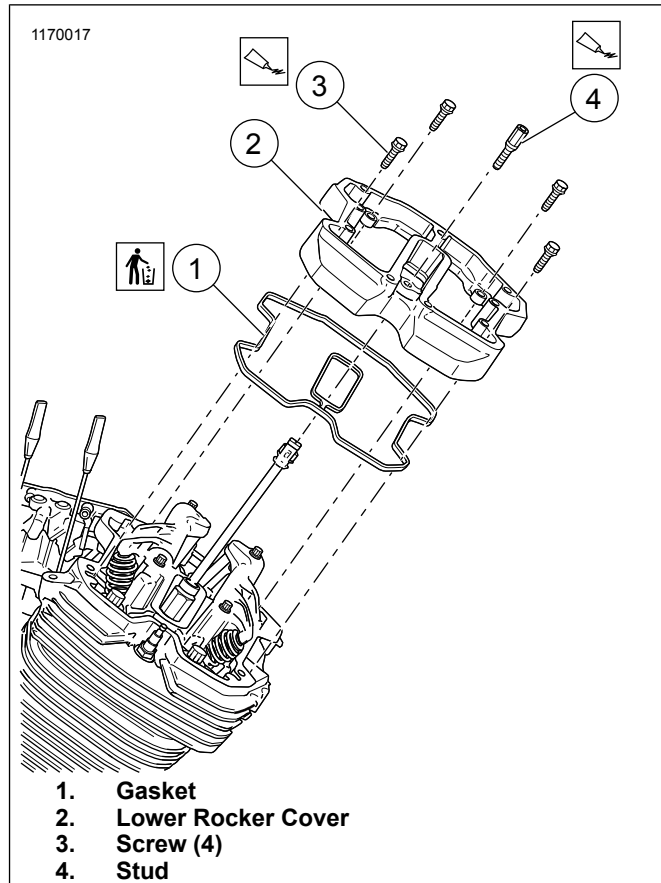


Figure 7. Lower Rocker Cover

## COMPLETE

### NOTE

Reference a service manual for the following procedures.

1. Install breathers, rocker arms and upper rocker covers.
2. Install upper cooling lines.
3. Install upper front engine mount.
4. **Connect connectors:** Horn, knock sensors, fuel injectors, automatic compression release.
5. Connect spark plug cables to spark plugs.
6. Install mid-frame air deflectors, if equipped.
7. Install air filter backplate assembly and air filter.
8. Install fuel tank.
9. Connect negative battery cable.
10. Install seat. After installing seat, pull upward on seat to be sure it is locked in position.