



INSTRUCTIONS

94100126

2024-01-23



SEAT STRUCTURE HARDWARE KIT

GENERAL INFORMATION

Table 1. General Information

Kits	Suggested Tools	Skill Level ⁽¹⁾
52100065	Safety Glasses, Torque Wrench	
<i>(1) Tightening to torque value or other moderate tools and techniques required</i>		

KIT CONTENTS

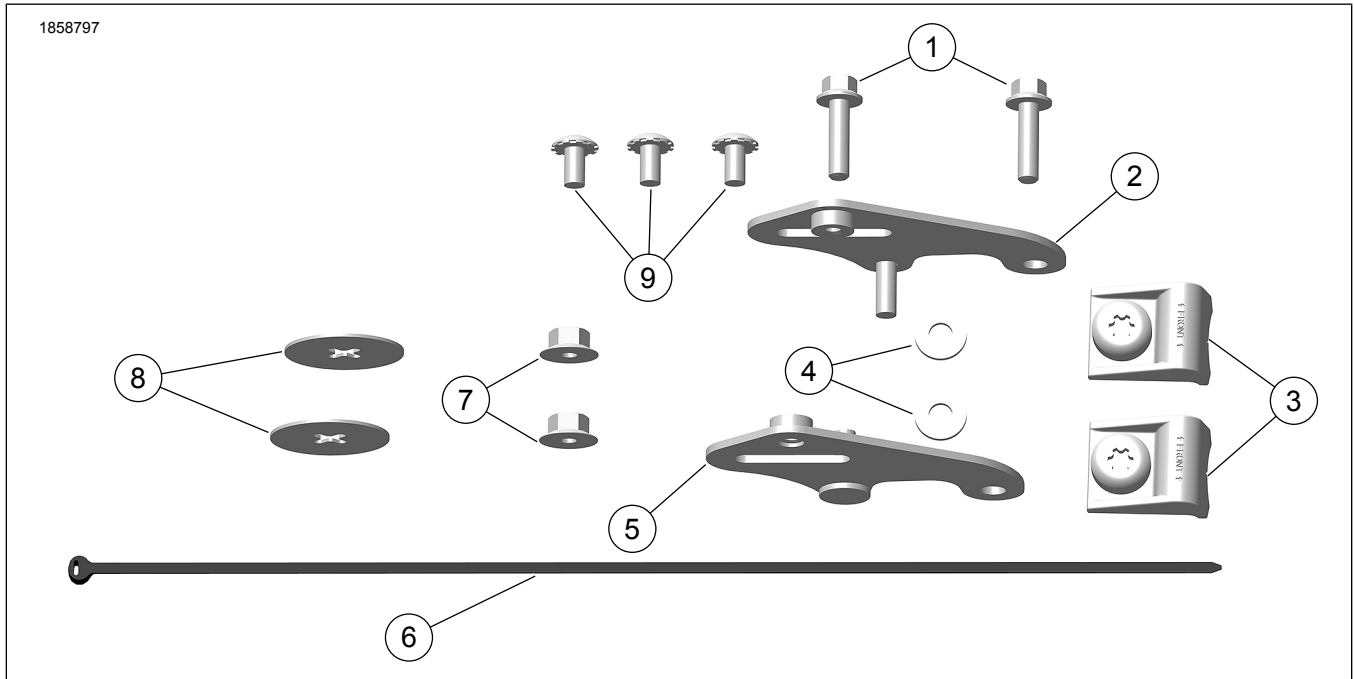


Figure 1. Kit Contents: Seat Structure

Table 2. Kit Contents: Seat Structure Hardware Kit

<input checked="" type="checkbox"/>	Verify that all contents are present in the kit before installing or removing items from vehicle.				
Item	Qty	Description	Part No.	Notes	
<input type="checkbox"/>	1	2	Screw, hex flange	3901	
<input type="checkbox"/>	2	1	Grab strap bracket RH	Not sold separately	
<input type="checkbox"/>	3	2	Seat bumper	54395-10	
<input type="checkbox"/>	4	2	Washer	6703	
<input type="checkbox"/>	5	1	Grab strap bracket LH	Not sold separately	
<input type="checkbox"/>	6	1	Cable strap	10039	
<input type="checkbox"/>	7	2	Large flange nut	7499	
<input type="checkbox"/>	8	2	Nylon retaining washer	7434	
<input type="checkbox"/>	9	3	Truss stainless screws	2952A	
<input type="checkbox"/>	10	1	Fender seat nut assembly	59768-97	Not shown

GENERAL

Models

For model fitment information, see the Parts and Accessories (P&A) Retail Catalog or the Parts and Accessories section of www.harley-davidson.com.

Verify that the most current version of the instruction sheet is used. It is available at: h-d.com/isheets

Contact Harley-Davidson Customer Support Center at 1-800-258-2464 (U.S. only) or 1-414-343-4056.

Installation Requirements

⚠ WARNING

Rider and passenger safety depend upon the correct installation of this kit. Use the appropriate service manual procedures. If the procedure is not within your capabilities or you do not have the correct tools, have a Harley-Davidson dealer perform the installation. Improper installation of this kit could result in death or serious injury. (00333b)

NOTE

This instruction sheet references service manual information. A service manual for the year and model motorcycle is required for this installation and is available from:

- A Harley-Davidson dealer.
- H-D Service Information Portal, a subscription-based access available for most 2001 and newer models. For more information see *Frequently ask questions about subscriptions.*

PREPARE

1. Remove saddlebags. See service manual.
2. Remove seat. See service manual.

REMOVE

1. **Models with a passenger pillion:** See Figure 2. Remove seat strap.
 - a. Remove nuts (4) and washers (2).
 - b. Remove seat strap (1) from studs (3).

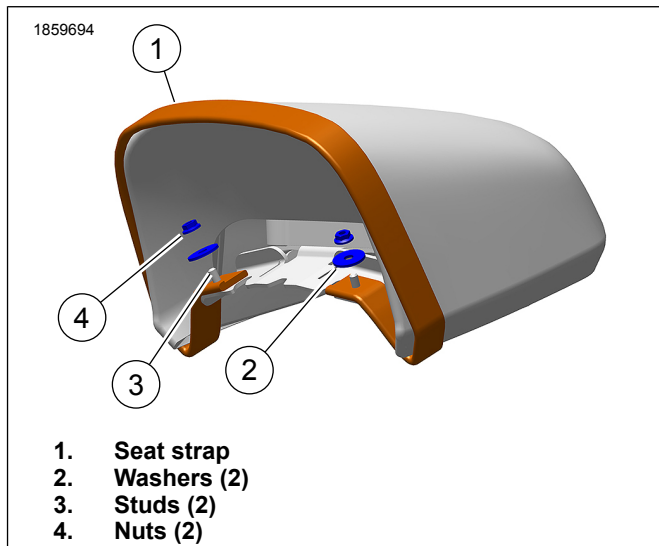


Figure 2. Remove Seat Strap

INSTALL

Seat Retention Nut

1. See Figure 3. Slide new retention nut (2) onto cable strap.
2. Insert into fender hole and hold with cable strap.

3. Align tab (3) on retention nut and hold nut snug against underside of rear fender. Align and install retention washer (4).
4. Remove cable strap.

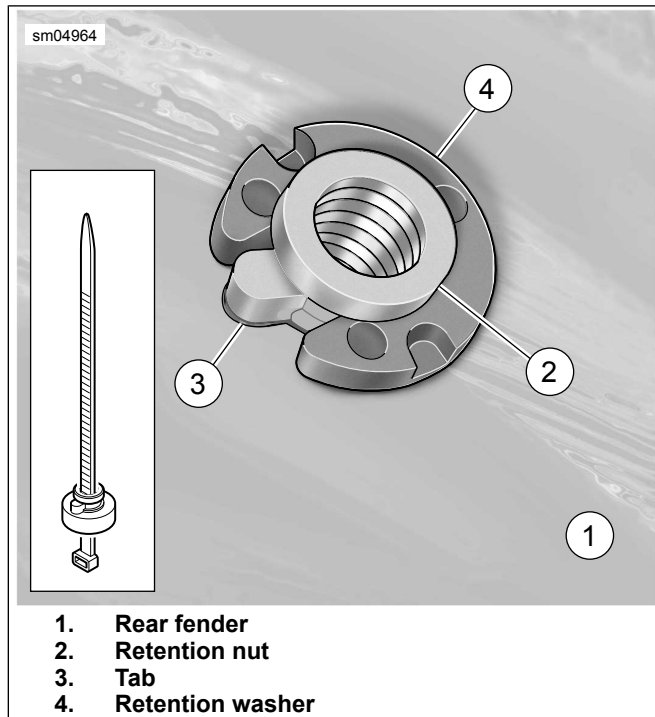
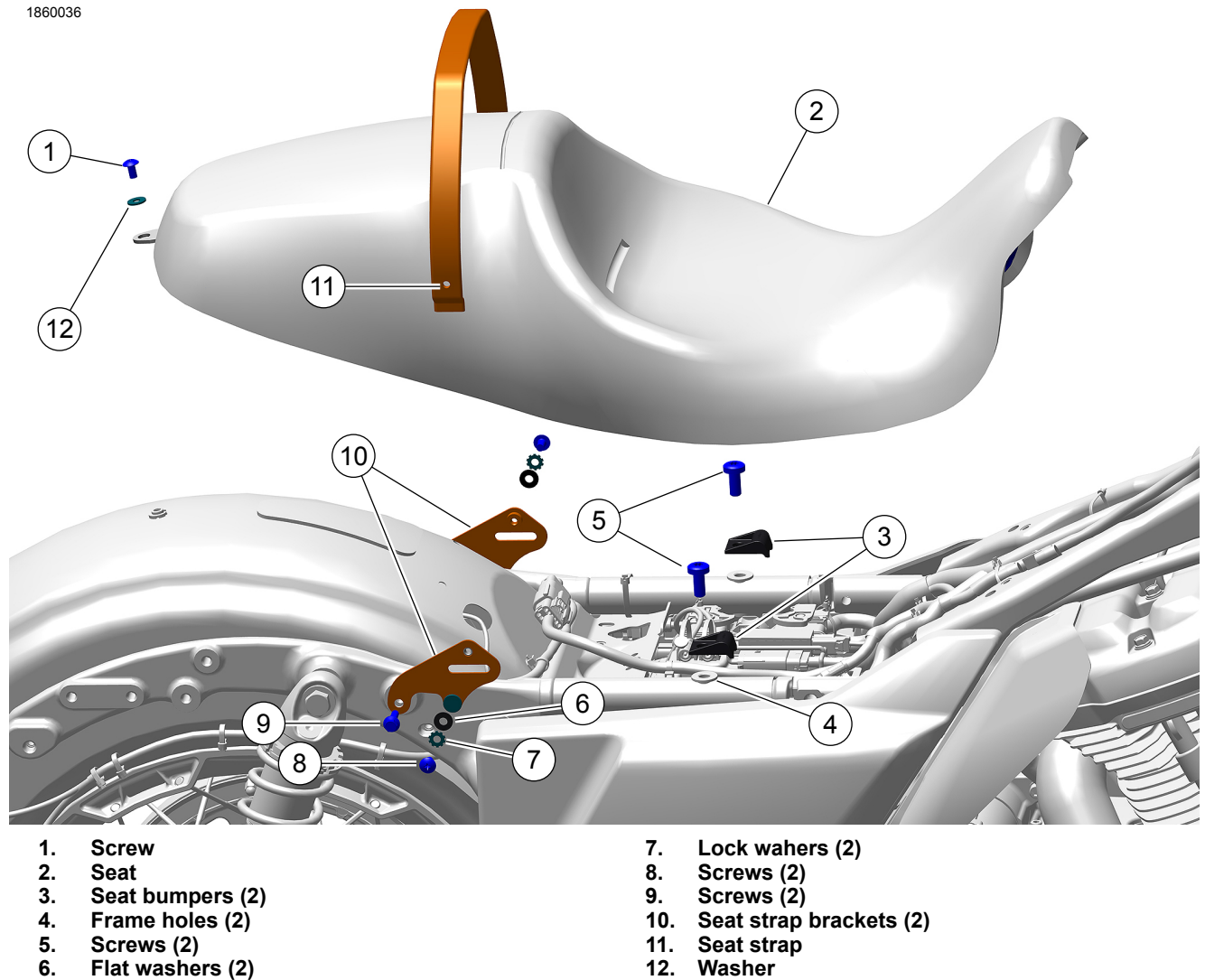


Figure 3. Install Seat Retention Nut

Seat Bumper

1. See Figure 4. Install a seat bumpers (3) to each upper frame rail (4).
2. Secure with fastener (5). Tighten.
Torque: 43.4–48.8 N·m (32–36 ft-lbs) *Seat bumper fastener*



- | | |
|---------------------|-----------------------------|
| 1. Screw | 7. Lock washers (2) |
| 2. Seat | 8. Screws (2) |
| 3. Seat bumpers (2) | 9. Screws (2) |
| 4. Frame holes (2) | 10. Seat strap brackets (2) |
| 5. Screws (2) | 11. Seat strap |
| 6. Flat washers (2) | 12. Washer |

Figure 4. Hardware Kit

Two-Up One-Piece Seat

1. See Figure 4. Install seat strap bracket.
 - a. Position seat strap bracket (10).
 - b. Install screw (9). Tighten.
Torque: 5.4–8.1 N·m (48–72 in-lbs) *Seat strap bracket screw*
2. Place seat (2) in position.
3. Hold rear of seat above fender.
Length/Dimension/Distance: 76.2 mm (3 in)
 - a. Push front of seat downward and forward until slot engages tongue.
4. Tuck end of seat strap (11) into slot.
 - a. Install seat strap screw (8), lock washer (7) and washer (6). Tighten.
Torque: 5.4–8.1 N·m (48–72 in-lbs) *Seat strap screw*

5. Secure seat to fender with seat screw (1) and washer (12). Tighten.
Torque: 5.4–8.1 N·m (48–72 in-lbs) *Seat mounting screw*

6. Pull up on seat to verify that it is secure.

COMPLETE

1. Install saddlebags. See service manual.